

# Class A Headquarters Sublease Opportunity

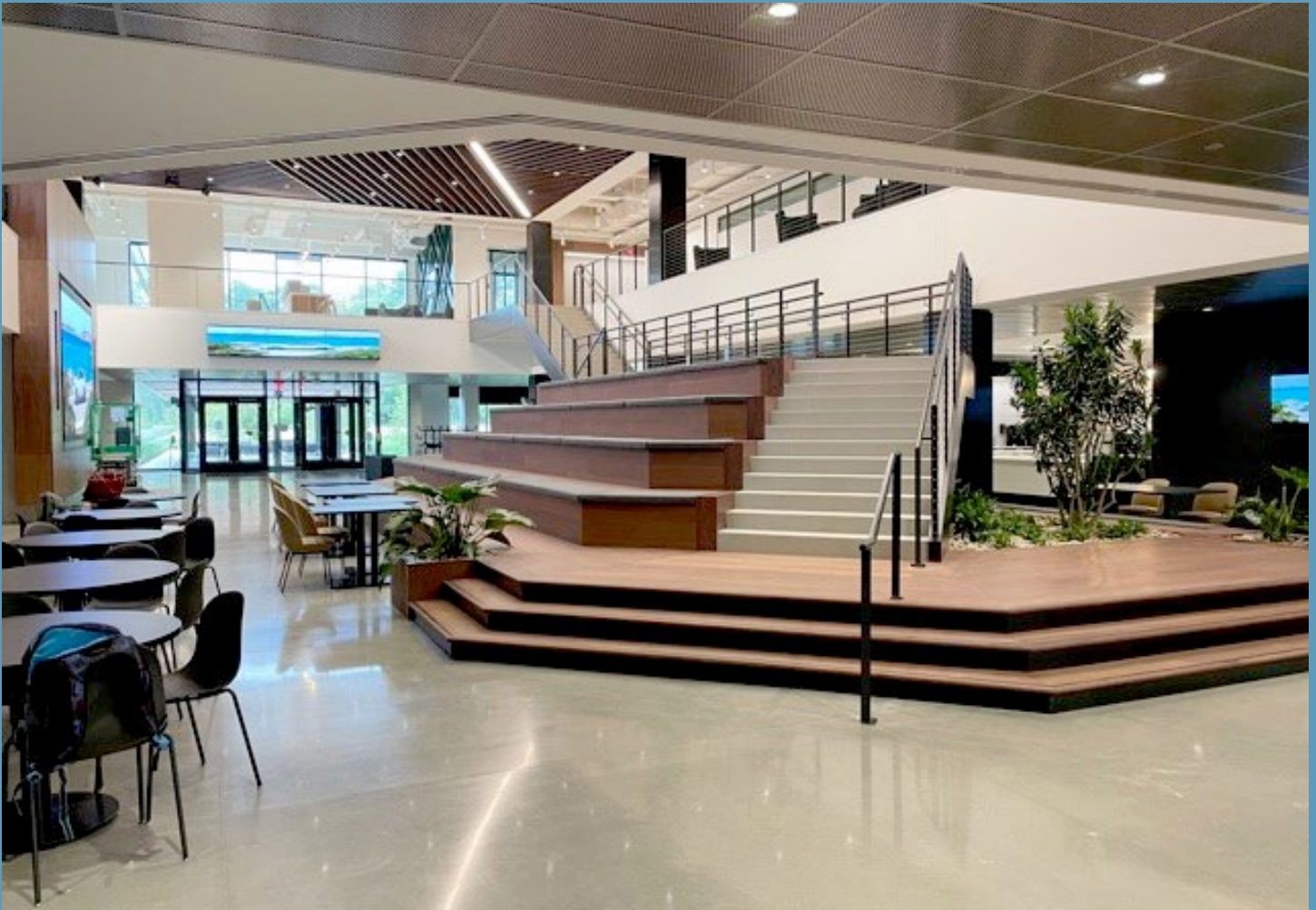




# Your Future HQ Address

---

In the heart of Farmington Hills, this Class A office delivers a standout sublease opportunity for enterprise users in automotive, tech and beyond. Bold architecture, elevated amenities and prime I-696 visibility make it a space that's built to impress and ready to perform.

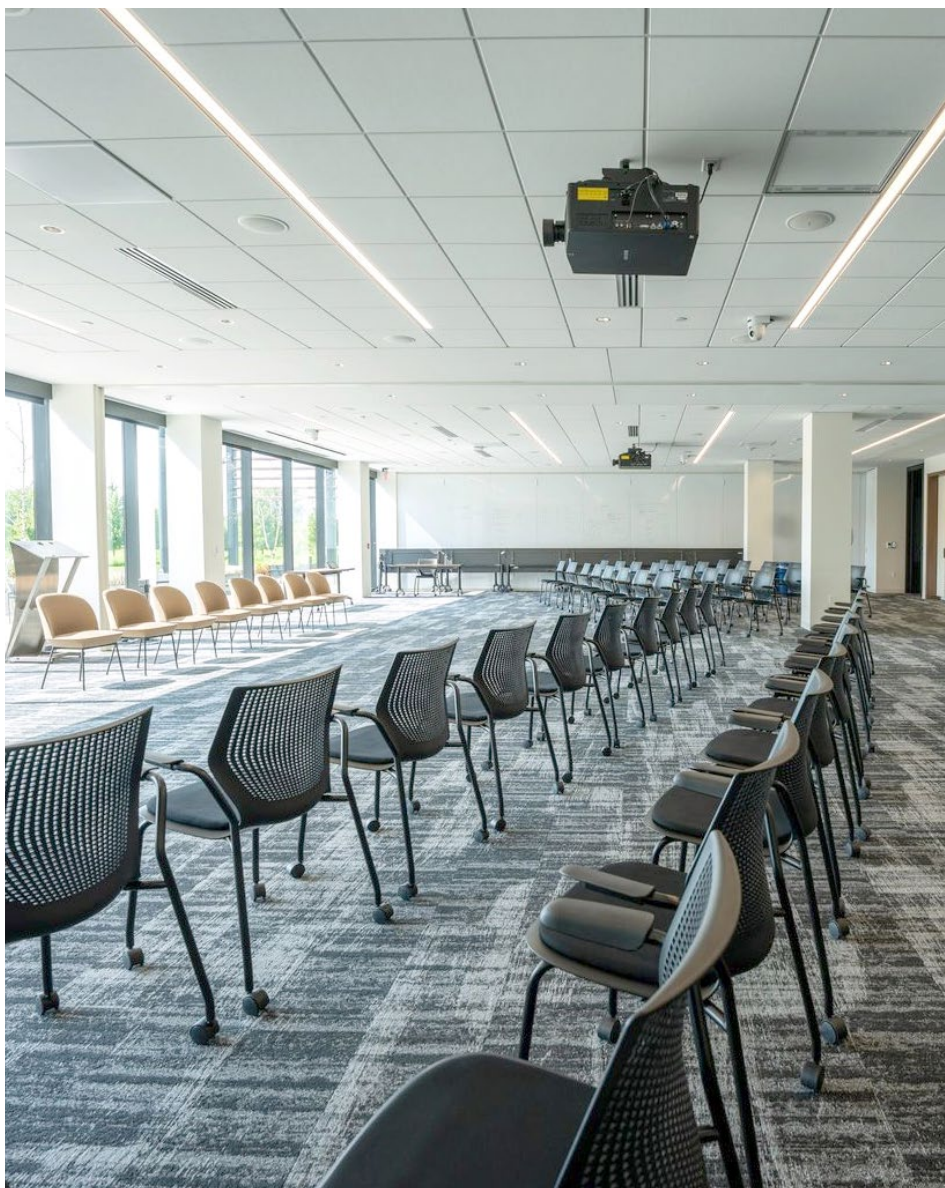




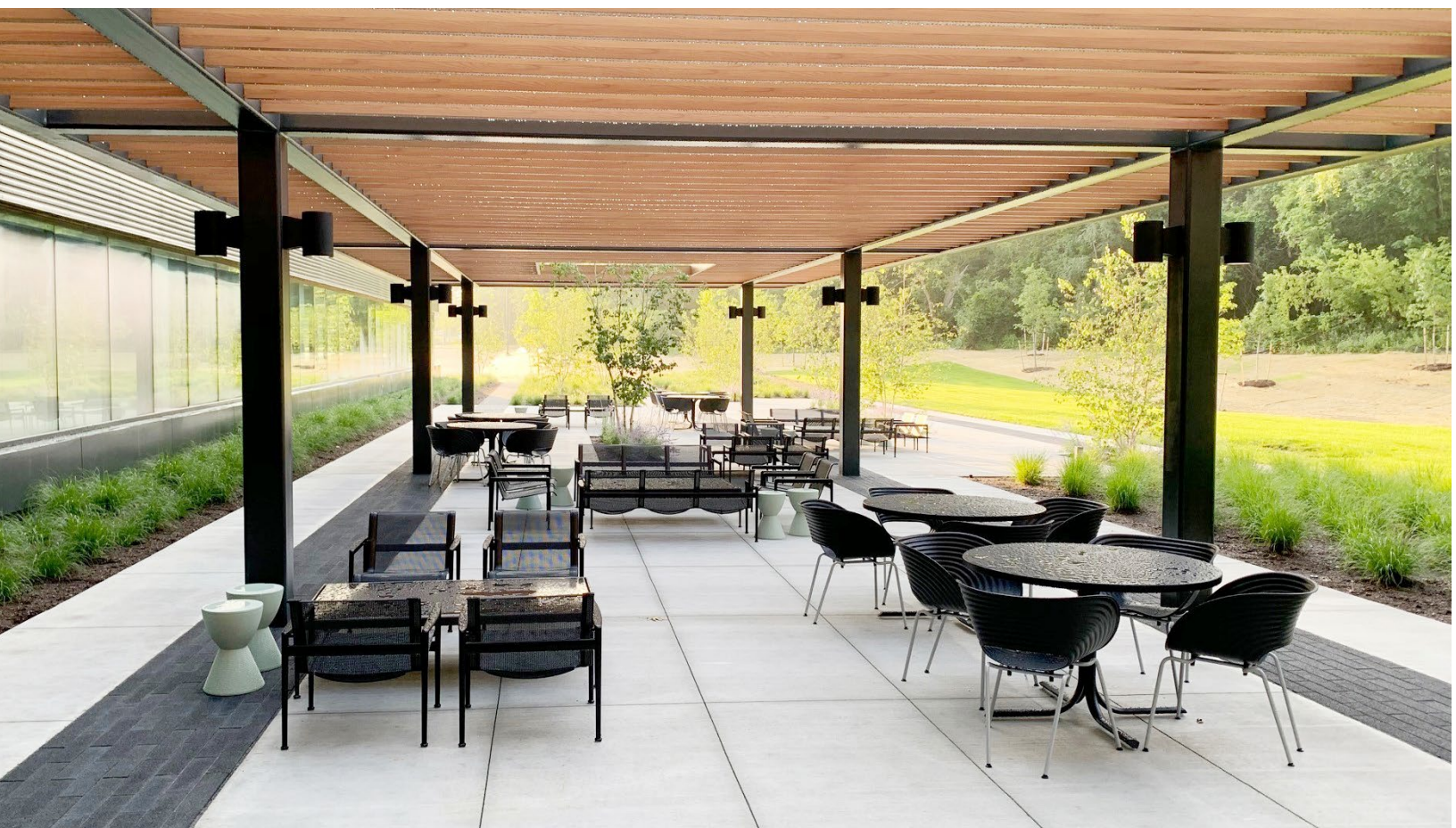


# Property Highlights

- **200,000** total square feet
- Built in **2021**
- Modern, **state of the art** finishes
- **Prominent expressway** visibility and signage opportunity
- **1,100** parking spaces with multiple EV chargers
- Full building **backup generator**
- **Full-service** cafeteria & fitness center
- **Outdoor seating** with a pond, wooded views, & walking trail
- Flexible and centralized **Conferencing Center**













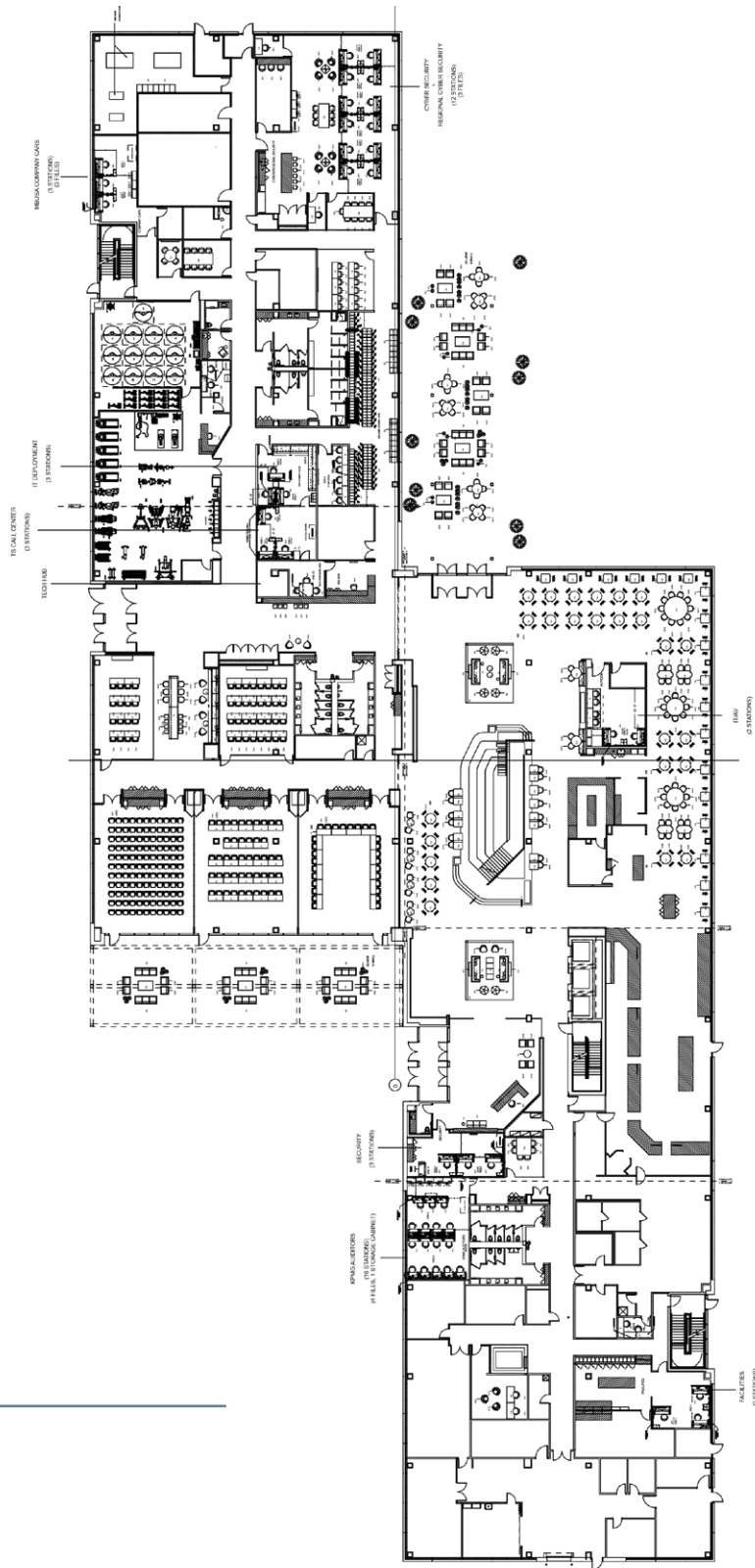
# Space That Scales

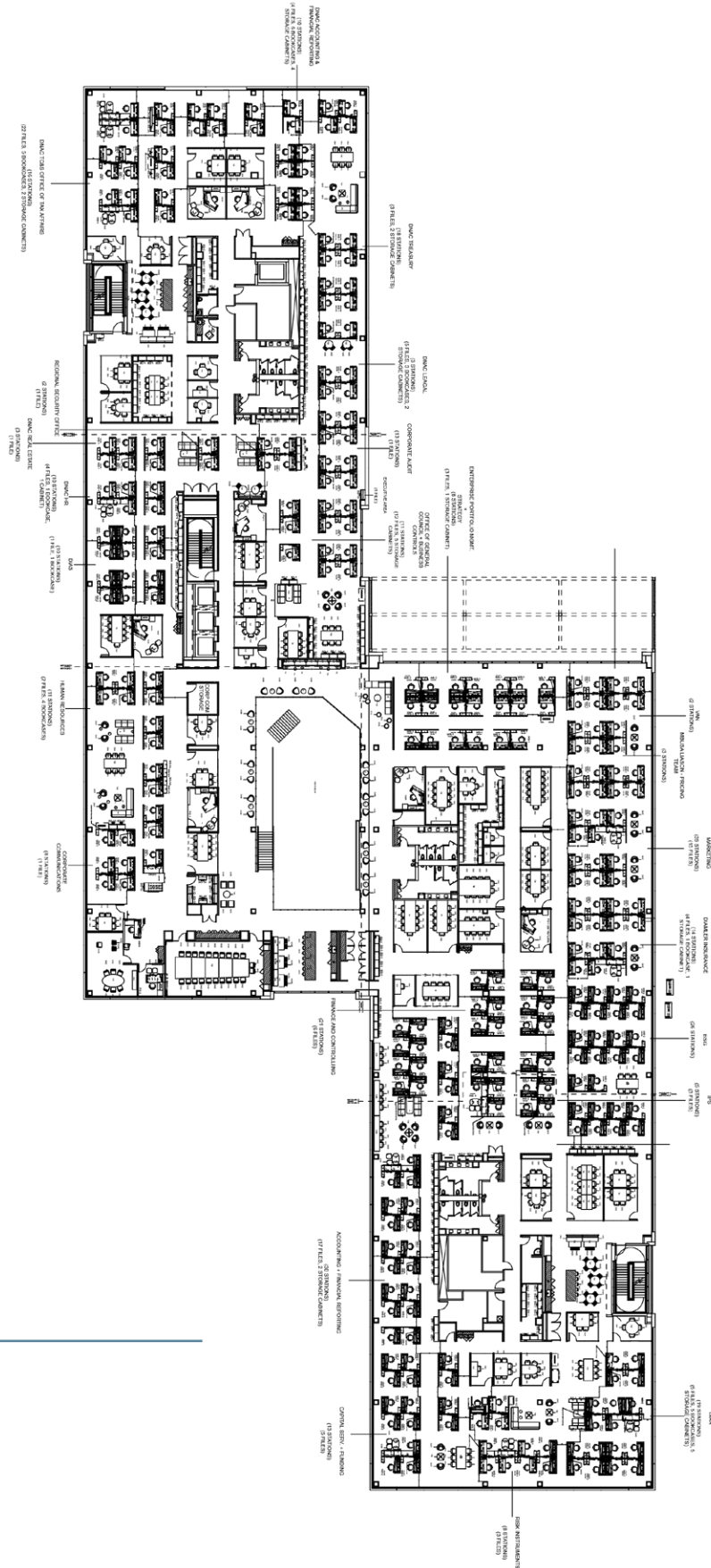
---

Built for presence and scale, 35555 W 12 Mile Rd offers open floorplans with industrial-style details and natural light, framed by expansive windows.



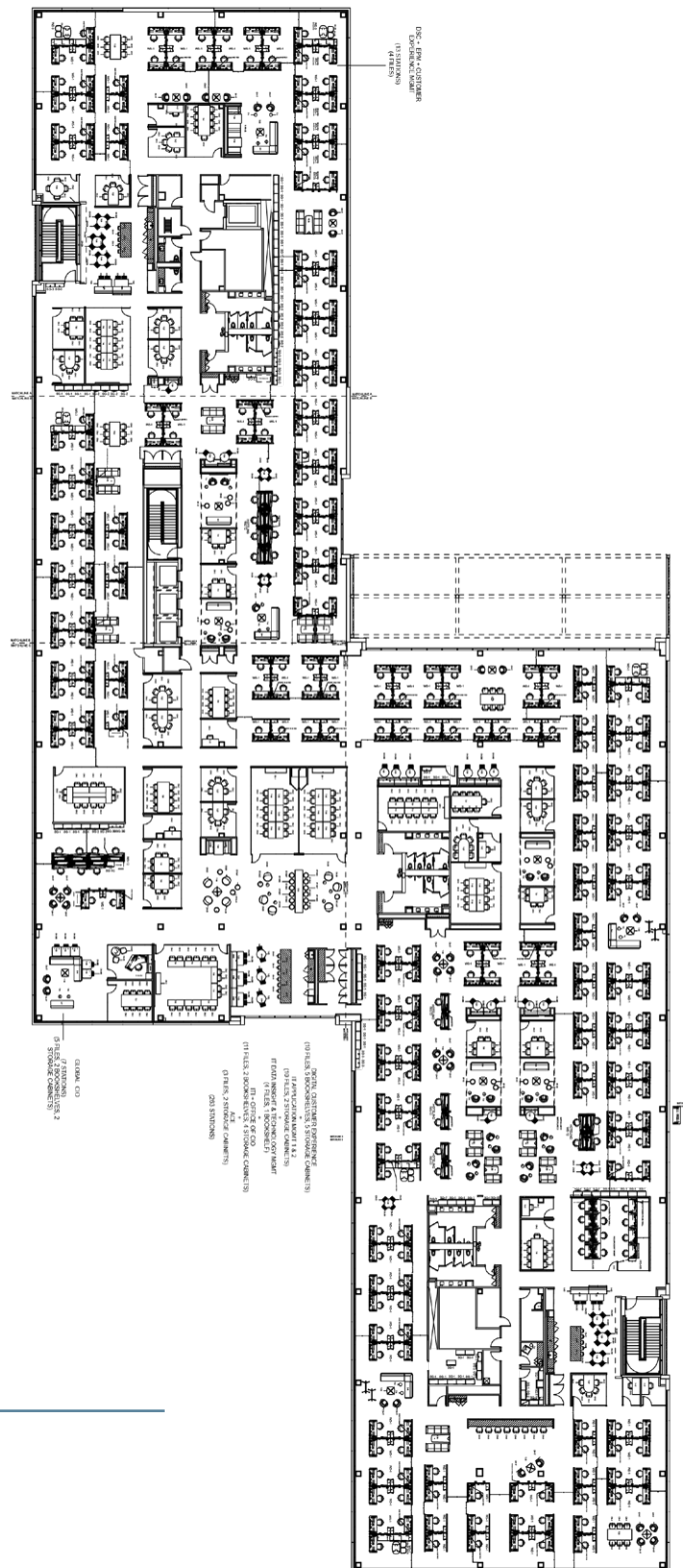
## Floor 1





## Floor 2





## Floor 3





35555 W 12 Mile Rd is located in Farmington Hills, one of the most prosperous suburbs in the country. Just minutes from Woodland Hills Nature Park, the location offers everyday conveniences, diverse dining options and a balance of green space and executive appeal.

9

ENTERTAINMENT

16

FITNESS

●

RESTAURANTS

59

SHOPPING


24

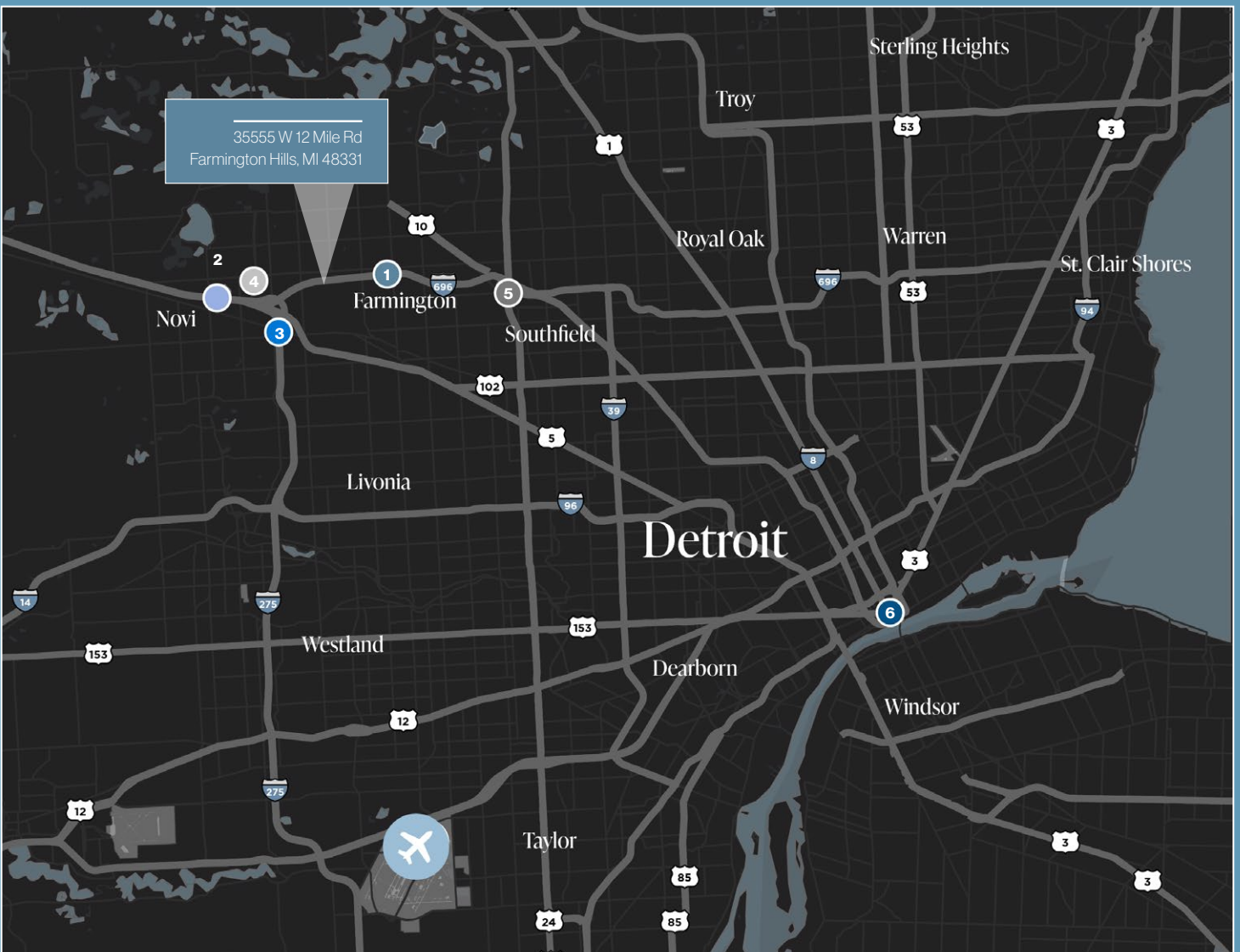
HOTELS



# Location with Leverage

Strategically located at the intersection of I-696 and W 12 Mile Road, the property offers effortless access to key business hubs across metro Detroit. With direct freeway frontage, generous parking and less than a 30-minute drive to Detroit Metropolitan Wayne County Airport, commuting and client travel are streamlined from every direction.

- 1 I-66 - 4 min
- 2 I-96 - 5 min
- 3 I-275 - 7 min
- 4 Route 5 - 8 min
- 5 Hwy 24 - 10 min
- 6 Downtown Detroit - 30 min
-  Detroit Metropolitan Airport - 28 min







---

35555 W 12 Mile Rd  
Farmington Hills, MI 48331

## For More Information, Contact:

---

### BRIAN PIERGENTILI

Executive Managing Director

O: 248.358.6103

C: 248.302.2076

[brian.piergentili@cushwake.com](mailto:brian.piergentili@cushwake.com)

### MICHAEL SESSA

Vice Chairman

[Michael.sessa@cushwake.com](mailto:Michael.sessa@cushwake.com)



---

©2025 Cushman & Wakefield. All rights reserved. The information contained in this communication is strictly confidential. This information has been obtained from sources believed to be reliable but has not been verified. NO WARRANTY OR REPRESENTATION, EXPRESS OR IMPLIED, IS MADE AS TO THE CONDITION OF THE PROPERTY (OR PROPERTIES) REFERENCED HEREIN OR AS TO THE ACCURACY OR COMPLETENESS OF THE INFORMATION CONTAINED HEREIN, AND SAME IS SUBMITTED SUBJECT TO ERRORS, OMISSIONS, CHANGE OF PRICE, RENTAL OR OTHER CONDITIONS, WITHDRAWAL WITHOUT NOTICE, AND TO ANY SPECIAL LISTING CONDITIONS IMPOSED BY THE PROPERTY OWNER(S). ANY PROJECTIONS, OPINIONS OR ESTIMATES ARE SUBJECT TO UNCERTAINTY AND DO NOT SIGNIFY CURRENT OR FUTURE PROPERTY PERFORMANCE.