

20-24 AKERLEY BOULEVARD

Burnside Business Park

21,709 SF INDUSTRIAL SPACE AVAILABLE / FOR SUBLEASE



James Collins, QPCR / Managing Director - NS, P.E.I / 902 489 0015 / jcollins@cwatlantic.com
Head Office / 406-120 Western Parkway / Bedford, NS B4B 2V0 / 902 425 1444



©2025 Cushman & Wakefield. All rights reserved. The information contained in this communication is strictly confidential. This information has been obtained from sources believed to be reliable but has not been verified. NO WARRANTY OR REPRESENTATION, EXPRESS OR IMPLIED, IS MADE AS TO THE CONDITION OF THE PROPERTY (OR PROPERTIES) REFERENCED HEREIN OR AS TO THE ACCURACY OR COMPLETENESS OF THE INFORMATION CONTAINED HEREIN, AND SAME IS SUBMITTED SUBJECT TO ERRORS, OMISSIONS, CHANGE OF PRICE, RENTAL OR OTHER CONDITIONS, WITHDRAWAL WITHOUT NOTICE, AND TO ANY SPECIAL LISTING CONDITIONS IMPOSED BY THE PROPERTY OWNER(S). ANY PROJECTIONS, OPINIONS OR ESTIMATES ARE SUBJECT TO UNCERTAINTY AND DO NOT SIGNIFY CURRENT OR FUTURE PROPERTY PERFORMANCE.

CWATLANTIC.COM

20-24 AKERLEY BOULEVARD

Burnside Business Park

OVERVIEW

PRIME INDUSTRIAL SPACE FOR SUBLEASE

THE PROPERTY

Positioned within the Burnside Business Park, 20-24 Akerley Boulevard presents a rare sublease opportunity in one of Atlantic Canada's most in-demand industrial nodes. Featuring functional and flexible space with below-market rent, this space is ideal for those seeking value without compromising on location or utility.

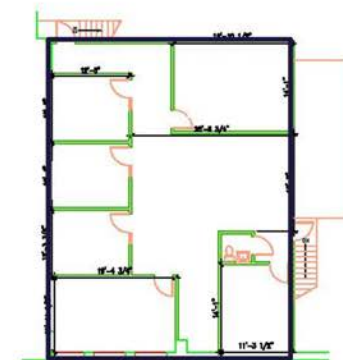
HIGHLIGHTS

- Featuring **21,709 sf** of flexible space across 3 units (5-7).
- Functional layout with office and showroom space to the front of the units, and large open warehouse to the rear.
- Four (4) loading doors, including one oversized option.
- Clear heights ranging from 16' to 20'.
- Prime location in the heart of Burnside with exceptional access making logistics a breeze.
- Short-term sublease with head-lease expiring September 30, 2026.



Burnside Business Park

PRIME INDUSTRIAL SPACE FOR SUBLEASE



20-24 AKERLEY BOULEVARD

Burnside Business Park

LOCATION OVERVIEW

PRIME INDUSTRIAL SPACE FOR SUBLEASE



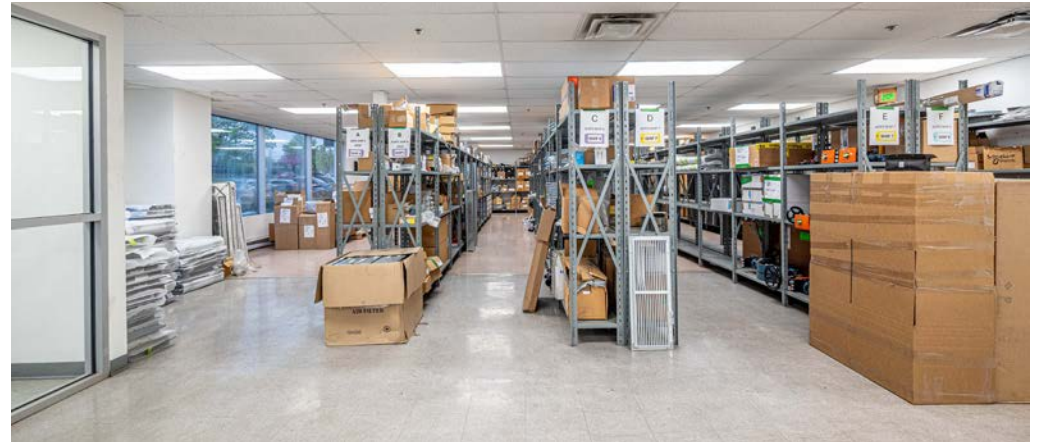
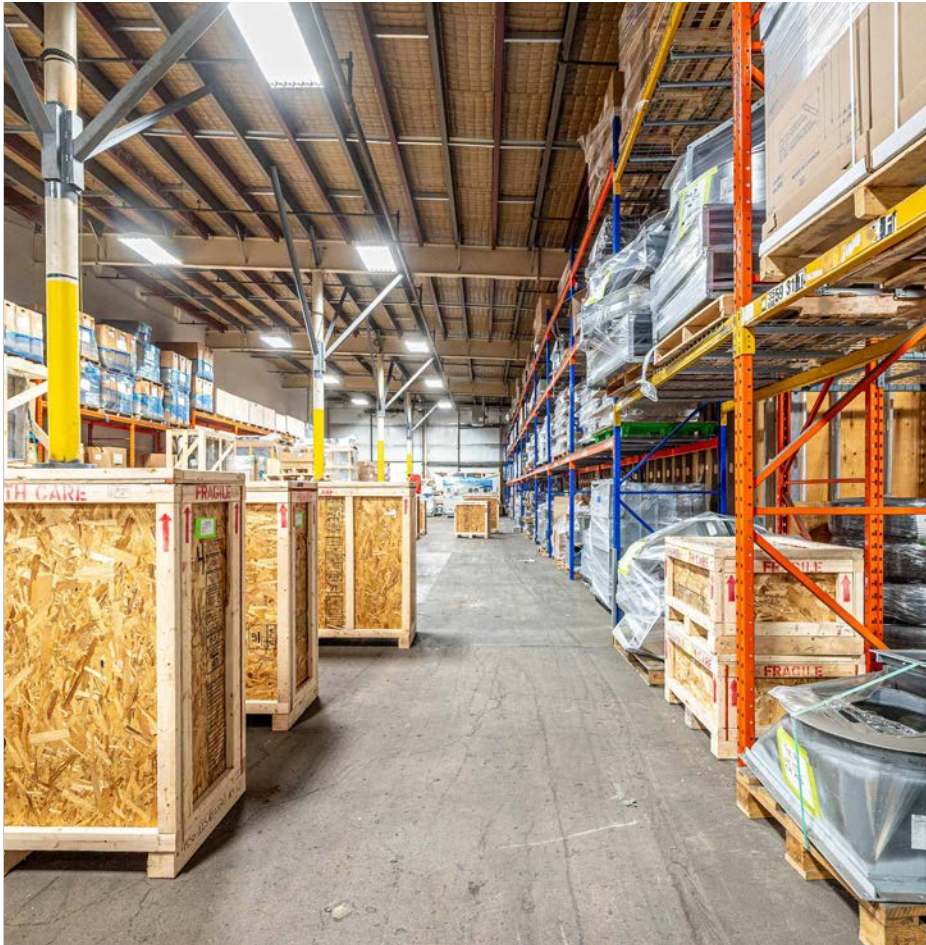
Strategically positioned within the Burnside Business Park, Atlantic Canada's largest business park. A premier industrial and commercial hub, the business park is home to over 1,500 businesses and approximately 30,000 employees. Located just minutes from major retail, transportation, and urban centres, including the prominent retail hub of Dartmouth Crossing. With immediate access to Highway 111, 118, both bridges, and the new Burnside Expressway, Burnside offers seamless connections across HRM, making it the industrial location of choice for businesses that move fast.

20-24 AKERLEY BOULEVARD

Burnside Business Park

PHOTOS

PRIME INDUSTRIAL SPACE FOR SUBLEASE



20-24 AKERLEY BOULEVARD

Burnside Business Park

21,709 SF PRIME INDUSTRIAL SPACE AVAILABLE

James Collins, QPCR / Managing Director - NS, P.E.I / 902 489 0015 / jcollins@cwatlantic.com
Head Office / 406-120 Western Parkway / Bedford, NS B4B 2V0

CWATLANTIC.COM



©2026 Cushman & Wakefield. All rights reserved. The information contained in this communication is strictly confidential. This information has been obtained from sources believed to be reliable but has not been verified. NO WARRANTY OR REPRESENTATION, EXPRESS OR IMPLIED, IS MADE AS TO THE CONDITION OF THE PROPERTY (OR PROPERTIES) REFERENCED HEREIN OR AS TO THE ACCURACY OR COMPLETENESS OF THE INFORMATION CONTAINED HEREIN, AND SAME IS SUBMITTED SUBJECT TO ERRORS, OMISSIONS, CHANGE OF PRICE, RENTAL OR OTHER CONDITIONS, WITHDRAWAL WITHOUT NOTICE, AND TO ANY SPECIAL LISTING CONDITIONS IMPOSED BY THE PROPERTY OWNER(S). ANY PROJECTIONS, OPINIONS OR ESTIMATES ARE SUBJECT TO UNCERTAINTY AND DO NOT SIGNIFY CURRENT OR FUTURE PROPERTY PERFORMANCE.