

# 26 E. 14TH STREET

INDIANAPOLIS, IN 46202



For Lease / 3,000 SF of Street Front Retail Space

**WE ARE  
THE CENTER  
OF RETAIL**



# 26 E. 14TH STREET

INDIANAPOLIS, IN 46202

## RETAIL SPACE

3,000 SF

## COMMENTS

- Conveniently located in downtown Indianapolis, surrounded by dense, diverse population
- Walkable, visible and easily accessible
- 78 apartments above
- Ideal space for office, coffee shop or retail shop
- Close proximity to Bottleworks, Mass Ave & IU Health Campus



## NEIGHBORHOOD DEMOGRAPHICS



POPULATION



AVERAGE  
HOUSEHOLD INCOME

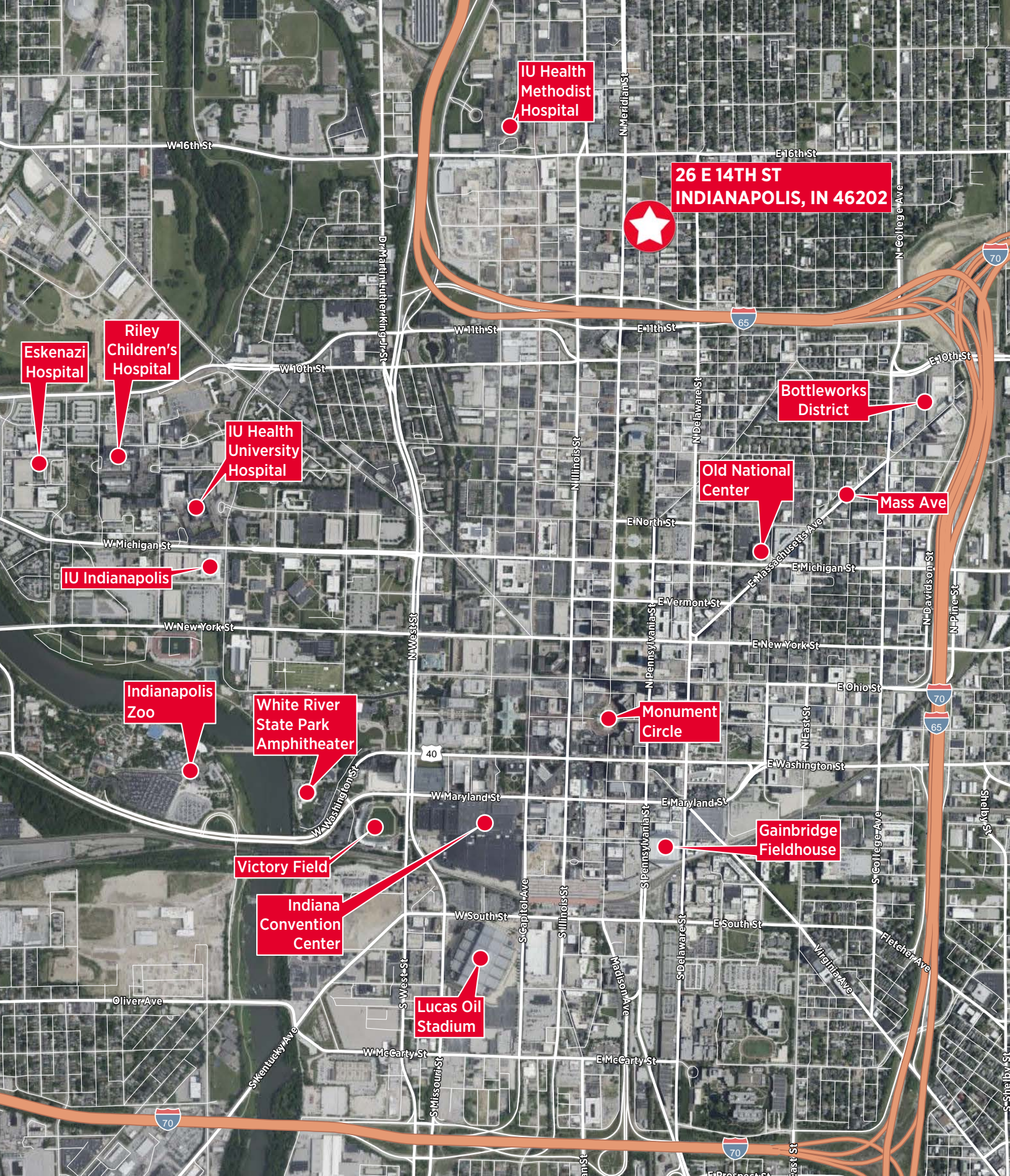


MEDIAN AGE

1 Mile	21,604	\$100,362	33.2
3 Miles	133,446	\$74,346	33.1
5 Miles	291,190	\$71,494	34

**Stefan Arsich, CCIM** / Sr. Associate / [stefan.arsich@cushwake.com](mailto:stefan.arsich@cushwake.com) / +1 317 639 0424

**WE ARE  
THE CENTER  
OF RETAIL**



**Stefan Arsich, CCIM** / Sr. Associate / [stefan.arsich@cushwake.com](mailto:stefan.arsich@cushwake.com) / +1 317 639 0424

**WE ARE  
THE CENTER  
OF RETAIL**