

2618, 2620 & 2626 N STREET

SACRAMENTO, CA

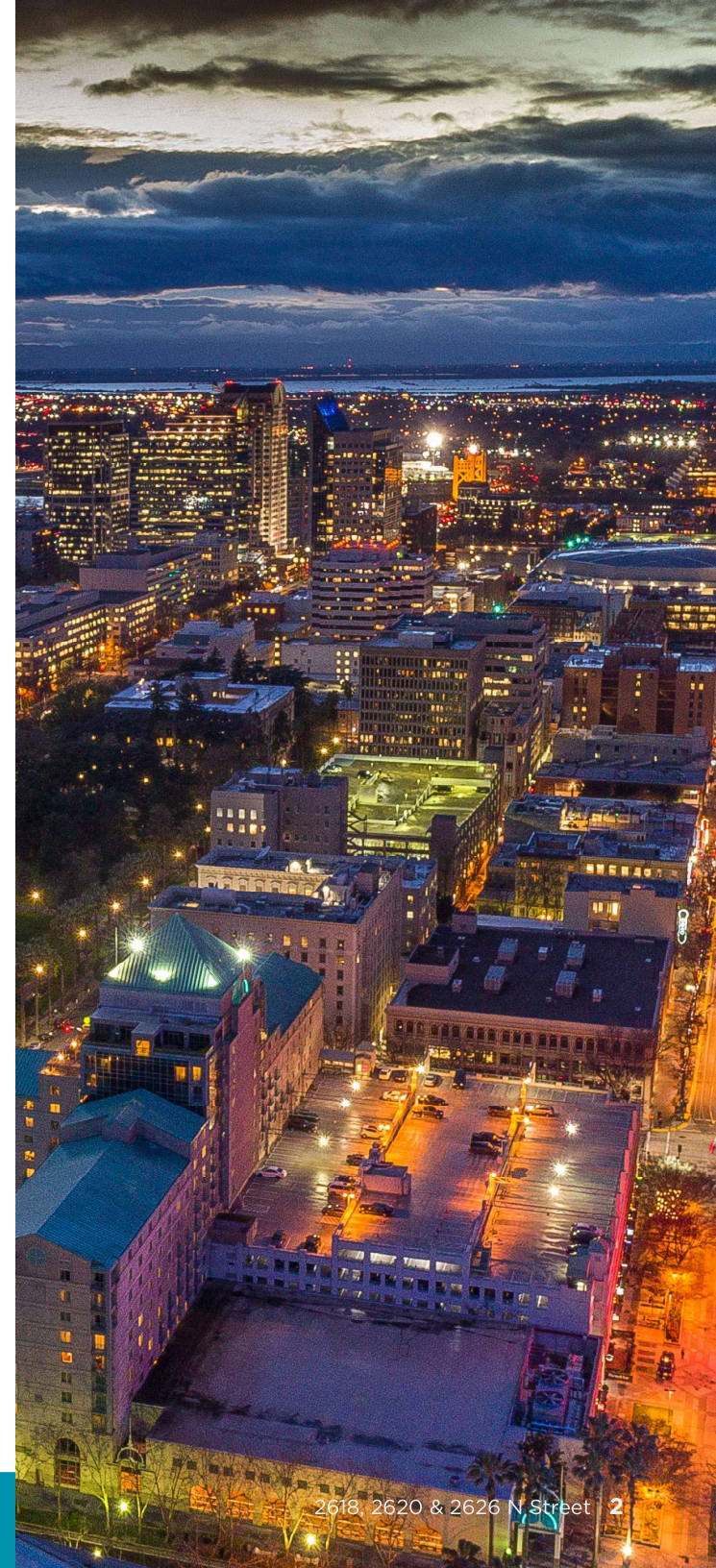


PROPERTY HIGHLIGHTS

Cushman & Wakefield is pleased to exclusively offer for sale 2618, 2620 and 2626 N Street; a three-parcel opportunity totaling 19,602 square feet (0.45 acres) of land located on one of the most desirable thoroughfares in Midtown, Sacramento.

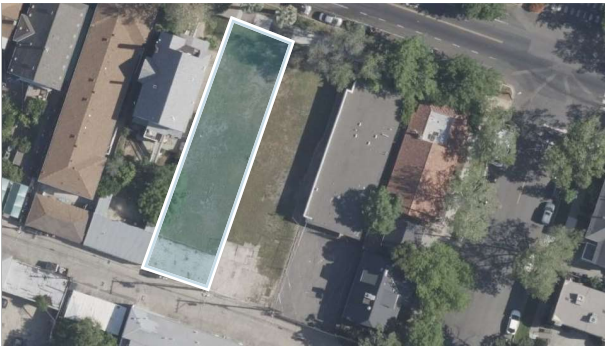
SALES PRICE: \$1,862,190 (\$95.00 PSF)

- Excellent opportunity for Multifamily or Office Development
- Walkable location in the heart of Midtown
- Located at the epicenter of urban core employment
- Proximity to public transit provides connectivity to the greater Sacramento MSA
- Rare land site



PROPERTY DETAILS

The property known as 2618-2626 N Street encompasses 3 parcels - approximately ± 0.45 Acres ($\pm 19,200$ SF). The property is located within the City of Sacramento limits and is zoned R-3A-SPD.



2618

007-0265-006

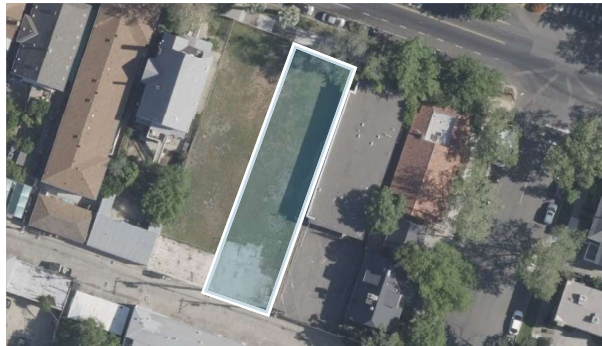
APN

0.15 AC (6,400 SF)

PARCEL SIZE

R-3A-SPD

ZONING



2620

007-0265-007

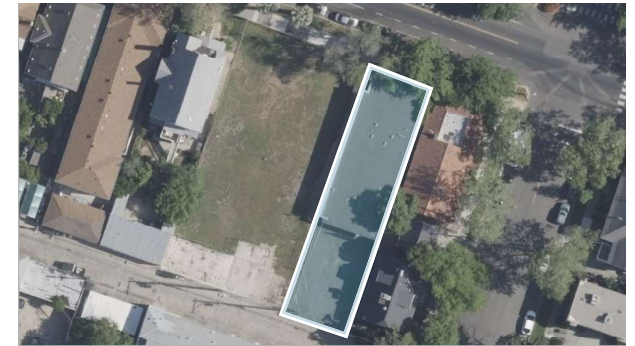
APN

0.15 AC (6,400 SF)

PARCEL SIZE

R-3A-SPD

ZONING



2626

007-0265-008

APN

0.15 AC (6,400 SF)

PARCEL SIZE

$\pm 2,520$ SF

BUILDING SIZE

R-3A-SPD

ZONING

ZONING DEFINITION:

R-3A-SPD: MULTI-FAMILY ALTERNATIVE RESIDENTIAL
36 UNITS PER ACRE | SPECIAL PLANNING DISTRICT

PROPERTY PHOTOS



AERIAL

2618, 2620 & 2626 N STREET
SACRAMENTO, CA

Fort Sutter
Medical Complex



The Sofia



Fort Sutter Hotel



Sutter Medical Center



Sutter Health
Sacramento Urgent Care



Starbucks



Cafe Bernardo



Paragary's



Mast Coffee



MAP



Sutter Health
Park



DOCO/Golden 1 Center



Sacramento Valley
Amtrak Station



CA State Capitol



Safe Credit Union
Convention Center



Sacramento County
Superior Court

DOWNTOWN

MIDTOWN

2618, 2620 & 2626 N STREET
SACRAMENTO, CA



CONTACT:

CHRIS SCHWARZE

Executive Director

Direct: +1 916 288 4803

chris.schwarze@cushwake.com

CA LIC# 01291261

LISA STANLEY

Executive Director

Direct: +1 916 769 3141

lisa.stanley@cushwake.com

CA LIC# 01340056



©2025 Cushman & Wakefield. All rights reserved. The information contained in this communication is strictly confidential. This information has been obtained from sources believed to be reliable but has not been verified. NO WARRANTY OR REPRESENTATION, EXPRESS OR IMPLIED, IS MADE AS TO THE CONDITION OF THE PROPERTY (OR PROPERTIES) REFERENCED HEREIN OR AS TO THE ACCURACY OR COMPLETENESS OF THE INFORMATION CONTAINED HEREIN, AND SAME IS SUBMITTED SUBJECT TO ERRORS, OMISSIONS, CHANGE OF PRICE, RENTAL OR OTHER CONDITIONS, WITHDRAWAL WITHOUT NOTICE, AND TO ANY SPECIAL LISTING CONDITIONS IMPOSED BY THE PROPERTY OWNER(S). ANY PROJECTIONS, OPINIONS OR ESTIMATES ARE SUBJECT TO UNCERTAINTY AND DO NOT SIGNIFY CURRENT OR FUTURE PROPERTY PERFORMANCE.