

5010 148TH AVE NE

REDMOND, WA



FOR LEASE 21,206 SF

PROPERTY FEATURES

Redmond Woods is a three-building campus, situated on 7.62 acres with immediate access to SR-520. A full second-floor office opportunity is currently available. Redmond Woods is ideal for companies seeking a professional environment with commuter-friendly features and convenient access to major transit corridors.

Located less than one mile from the Redmond Technology Station, the campus offers excellent regional connectivity. On-site amenities include a walking and biking trail along the north perimeter, bike racks, showers, and locker rooms.



AVAILABLE SPACE

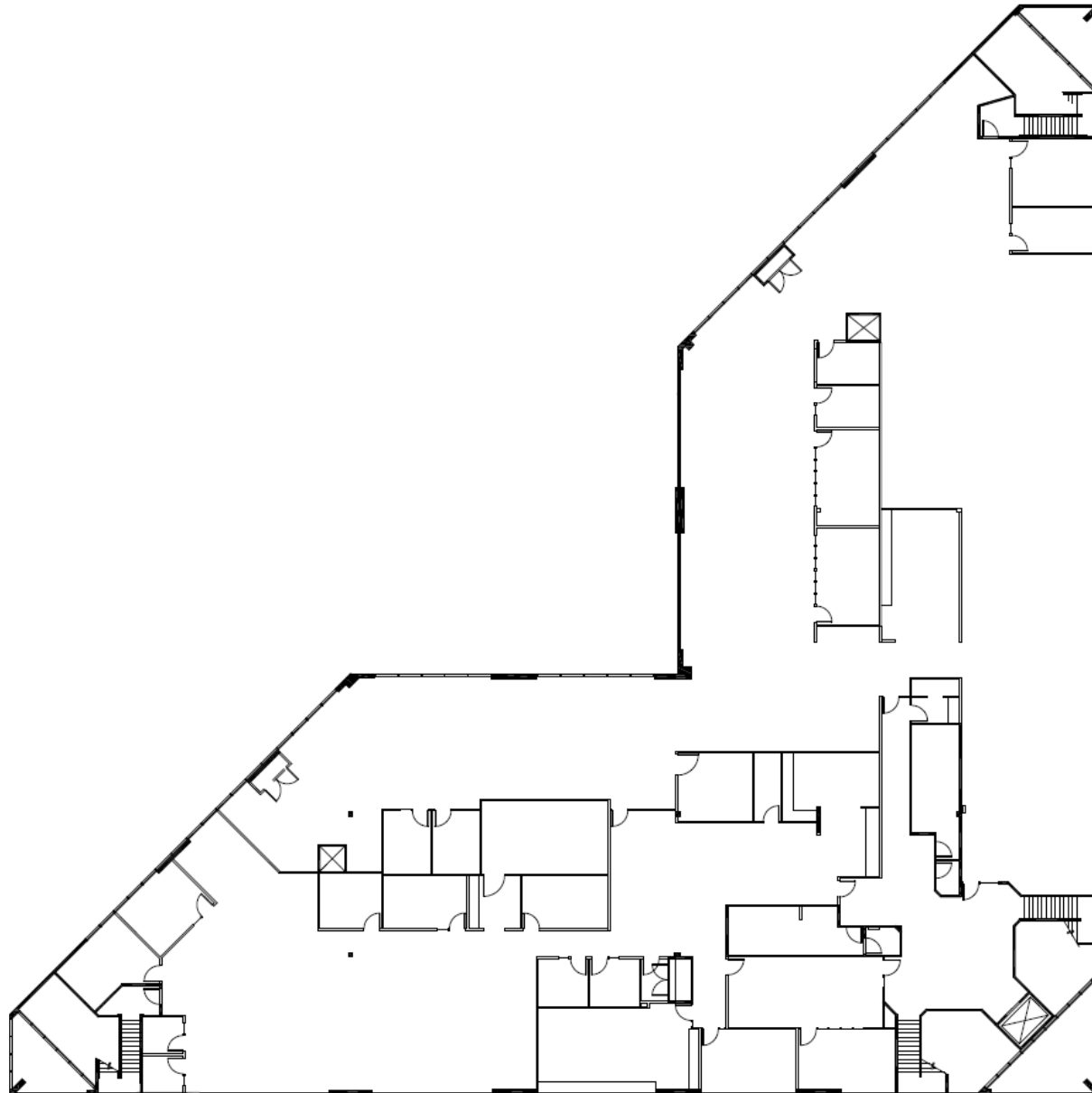
2ND FLOOR	21,206 SF
PARKING	3.36 stalls per 1,000 RSF
ZONING	OBAT
LEASE RATE	Call Brokers
AVAILABILITY	Immediate

HIGHLIGHTS

- Building B
- Full second-floor available with a mixture of open space and private offices.
- Immediate access to SR-520
- Less than 1 mile to Redmond Technology Center (Link light rail)
- Professional environment with strong commuter access
- Ample parking

FLOOR PLAN

2ND FLOOR | 21,206 SF



**JIM REED**

Executive Managing Director
+1 206 215 9815
jim.reed@cushwake.com

CARSON SCOTT

Senior Associate
+1 206 215 9781
carson.scott@cushwake.com

Cushman & Wakefield
601 Union Street, Floor 11
Seattle, WA 98101
cushmanwakefield.com