

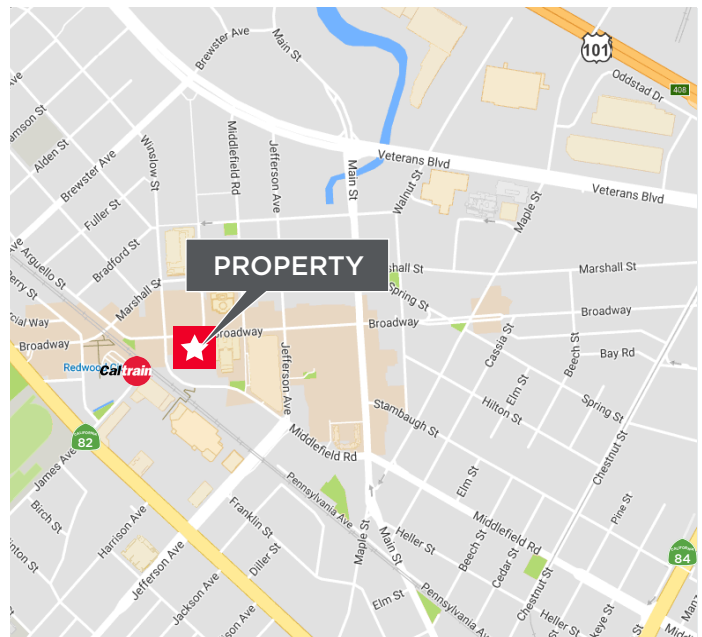
PLUG & PLAY SUBLEASE DOWNTOWN REDWOOD CITY

2317 Broadway, Redwood City, California



FULL FLOOR PLUG & PLAY SUBLEASE

- ±10,300 RSF on Top Floor
- Creative Space with Exposed Ceiling & Extensive Window Line
- Desirable Downtown Redwood City location near Coffee Shops, Shopping & More
- Short Walk to Caltrain
- Private Outdoor Patio
- Plug & Play
- 1 - 2 Year Sublease Preferred



For more information, please contact:

Eric Sorensen

Director
+1 650 320 0234
eric.c.sorensen@cushwake.com
LIC #01709528

Marc Pope

Executive Director
+1 650 401 2131
marc.pope@cushwake.com
LIC #01474483

1950 University Avenue, Suite 220
East Palo Alto, California 94303
main +1 650 852 1200
fax +1 650 856 1098
cushmanwakefield.com

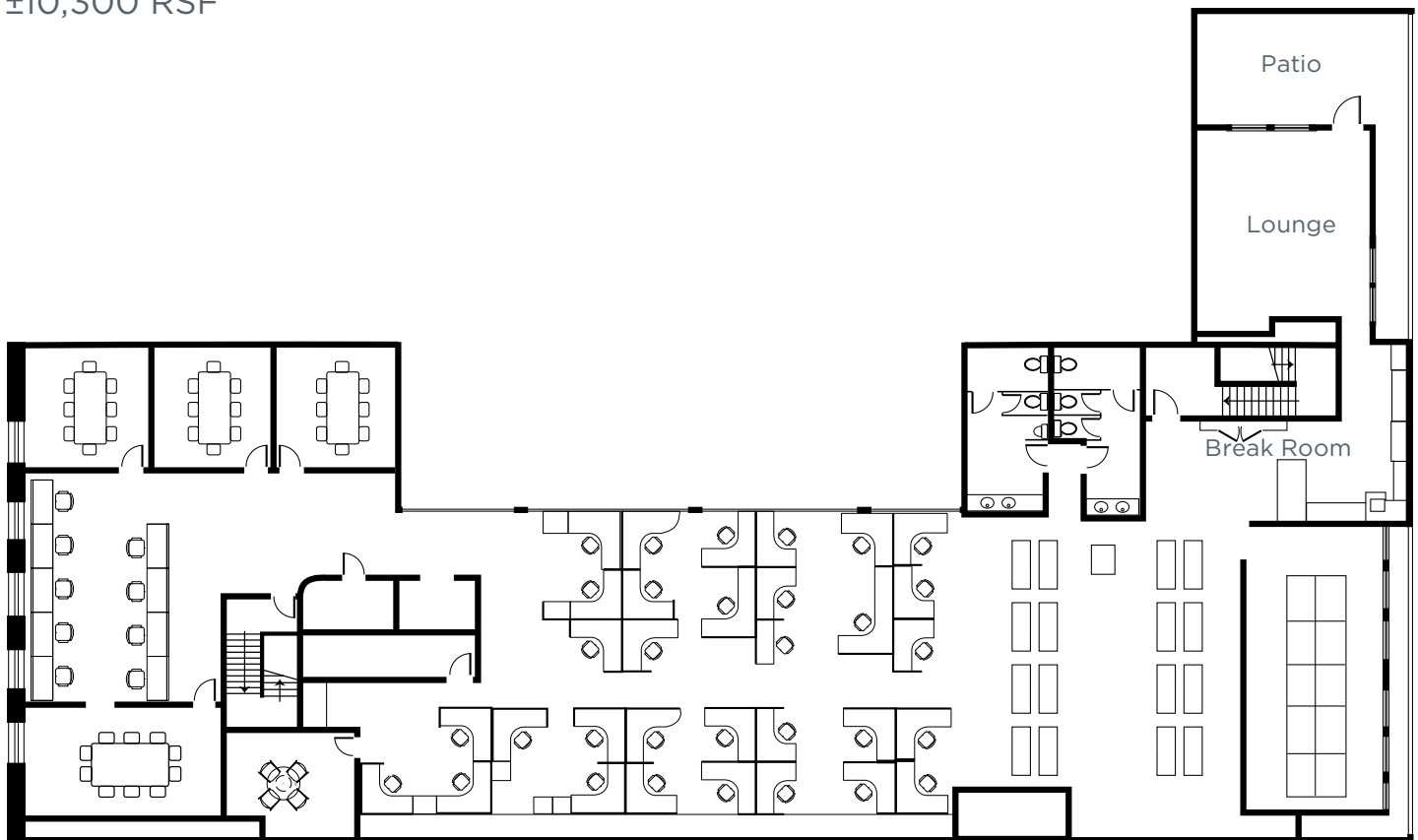
PLUG & PLAY SUBLEASE DOWNTOWN REDWOOD CITY

2317 Broadway, Redwood City, California

Floor Plan:

3rd Floor

±10,300 RSF



Floor plan not to scale

For more information, please contact:

Eric Sorensen

Director

+1 650 320 0234

eric.c.sorensen@cushwake.com

LIC #01709528

Marc Pope

Executive Director

+1 650 401 2131

marc.pope@cushwake.com

LIC #01474483

1950 University Avenue, Suite 220
East Palo Alto, California 94303
main +1 650 852 1200
fax +1 650 856 1098
cushmanwakefield.com



PLUG & PLAY SUBLEASE DOWNTOWN REDWOOD CITY

2317 Broadway, Redwood City, California

Interior Photos:



For more information, please contact:

Eric Sorensen

Director

+1 650 320 0234

eric.c.sorensen@cushwake.com

LIC #01709528

Marc Pope

Executive Director

+1 650 401 2131

marc.pope@cushwake.com

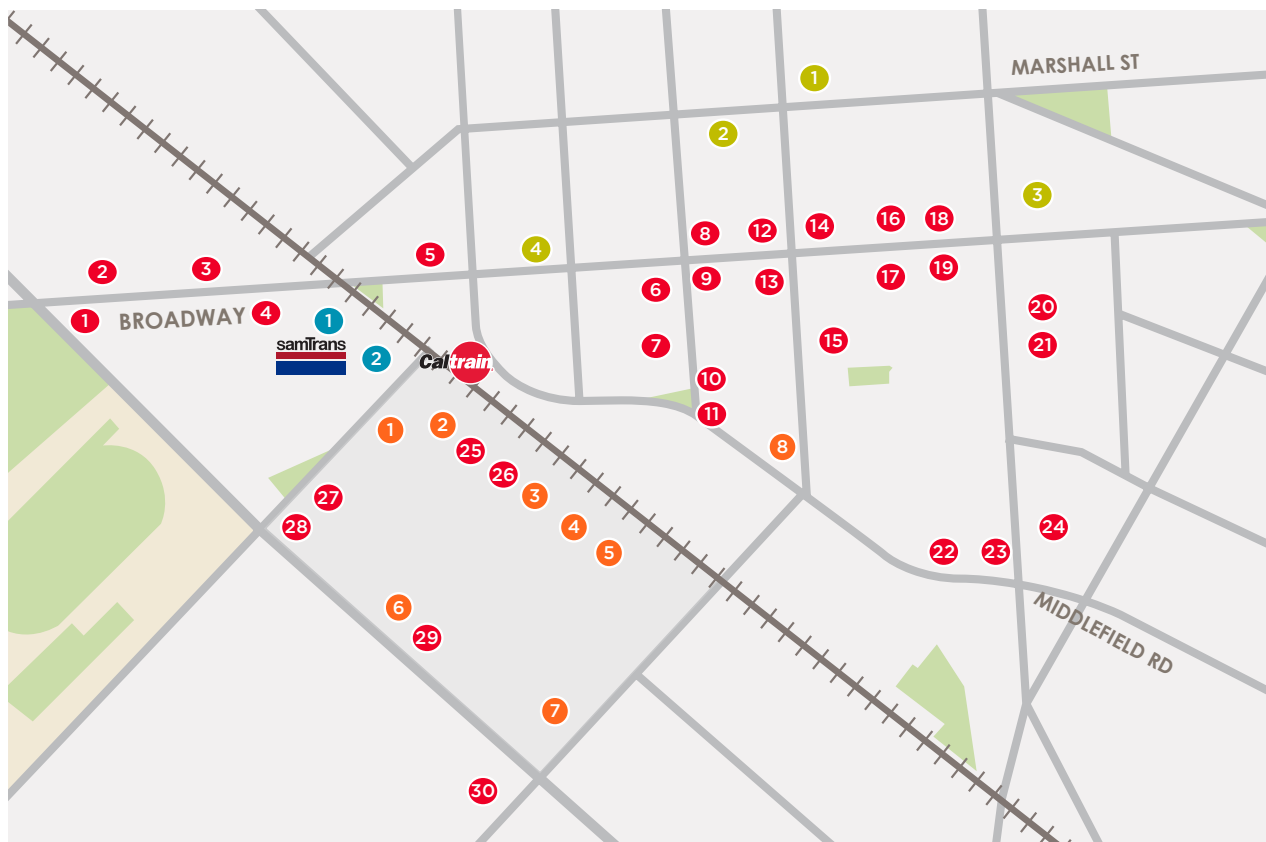
LIC #01474483

1950 University Avenue, Suite 220
East Palo Alto, California 94303
main +1 650 852 1200
fax +1 650 856 1098
cushmanwakefield.com

PLUG & PLAY SUBLEASE DOWNTOWN REDWOOD CITY

2317 Broadway, Redwood City, California

Downtown Redwood City Amenities:



RESTAURANTS

- 1 Ike's
- 2 The City Pub
- 3 Peet's
- 4 Gourmet Haus
- 5 The Sandwich Spot
- 6 Quinto Sol
- 7 Cafe LaTatine
- 8 Sakura
- 9 Five Guys Burgers
- 10 Chipotle
- 11 Portabello Grill
- 12 Philz Coffee
- 13 Old Spaghetti Factory

- 14 Margaritas
- 15 Howie's Artisan Pizza
- 16 LV MAR
- 17 Suisha House
- 18 Vesta
- 19 MandaLoun
- 20 Martin's West
- 21 Angelica's Bistro
- 22 Donato
- 23 Milagros
- 24 Patty Shack
- 25 Subway
- 26 Noah's Bagels
- 27 Jamba Juice

- 28 Max's Restaurants
- 29 Panda Express
- 30 Whole Foods Market
- 31 Pizza my heart

BANKS

- 1 Union Bank
- 2 Bank of America
- 3 Wells Fargo
- 4 Chase

TRANSPORTATION

- 1 SamTrans Bus Station
- 2 CalTrain Sequoia Station

RETAIL

- 1 CVS Pharmacy
- 2 Super Cuts
- 3 Starbuck's
- 4 Safeway
- 5 See's Candy
- 6 Barnes & Noble
- 7 Old Navy
- 8 Cost Plus World Market

For more information, please contact:

Eric Sorensen

Director
+1 650 320 0234
eric.c.sorensen@cushwake.com
LIC #01709528

Marc Pope

Executive Director
+1 650 401 2131
marc.pope@cushwake.com
LIC #01474483

1950 University Avenue, Suite 220
East Palo Alto, California 94303
main +1 650 852 1200
fax +1 650 856 1098
cushmanwakefield.com