

# PLUG & PLAY SUBLEASE DOWNTOWN REDWOOD CITY

2317 Broadway, Redwood City, California



## FULL FLOOR PLUG & PLAY SUBLEASE

- ±10,300 RSF on Top Floor
- Creative Space with Exposed Ceiling & Extensive Window Line
- Desirable Downtown Redwood City location near Coffee Shops, Shopping & More
- Short Walk to Caltrain
- Private Outdoor Patio
- Plug & Play
- Flexible Lease Term



For more information, please contact:

**Eric Sorensen**

Director  
+1 650 320 0234  
eric.c.sorensen@cushwake.com  
LIC #01709528

**Marc Pope**

Executive Director  
+1 650 401 2131  
marc.pope@cushwake.com  
LIC #01474483

1950 University Avenue, Suite 220  
East Palo Alto, California 94303  
main +1 650 852 1200  
fax +1 650 856 1098  
**cushmanwakefield.com**

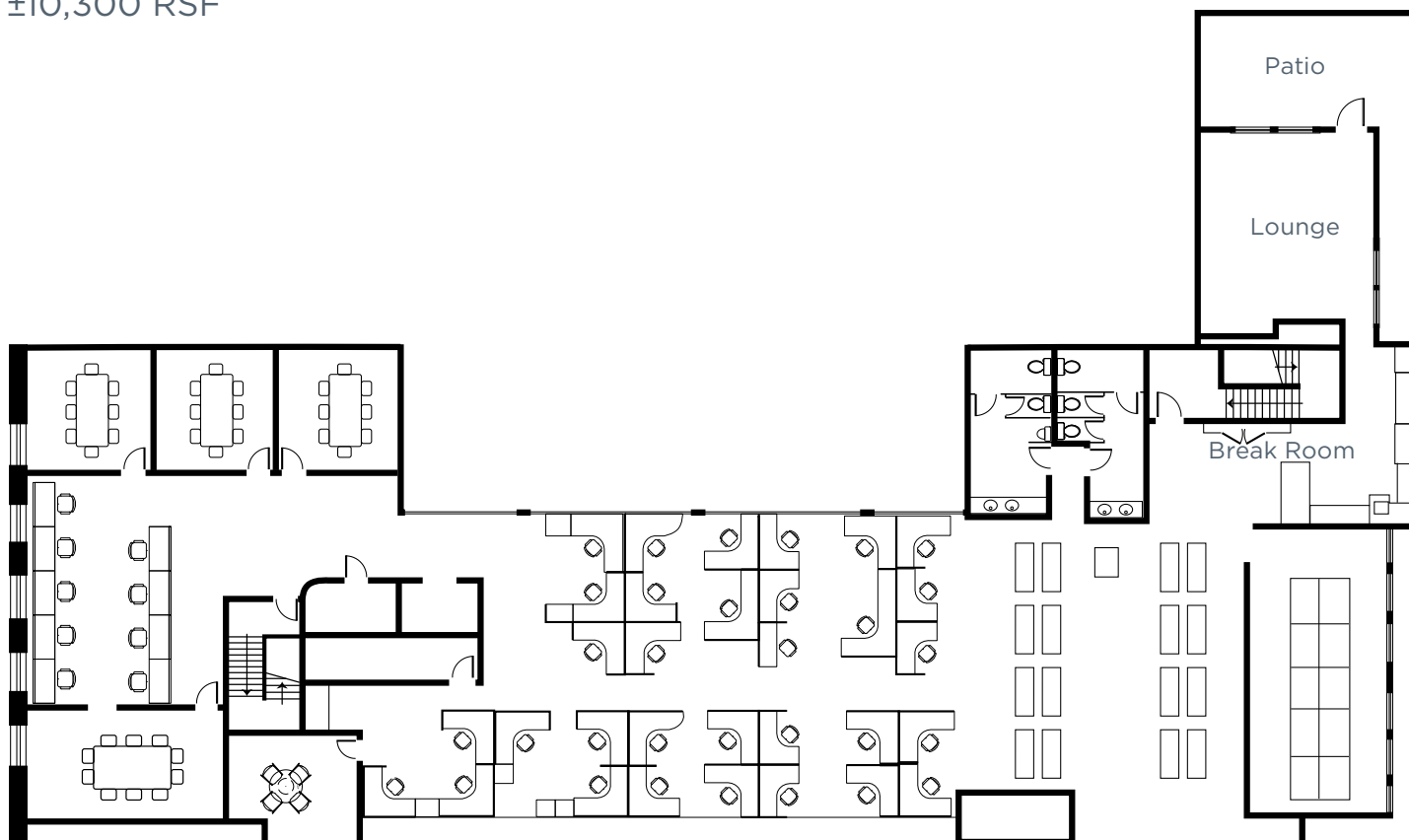
# PLUG & PLAY SUBLEASE DOWNTOWN REDWOOD CITY

2317 Broadway, Redwood City, California

## Floor Plan:

3rd Floor

±10,300 RSF



Floor plan not to scale

For more information, please contact:

**Eric Sorensen**

Director

+1 650 320 0234

[eric.c.sorensen@cushwake.com](mailto:eric.c.sorensen@cushwake.com)

LIC #01709528

**Marc Pope**

Executive Director

+1 650 401 2131

[marc.pope@cushwake.com](mailto:marc.pope@cushwake.com)

LIC #01474483

1950 University Avenue, Suite 220  
East Palo Alto, California 94303  
main +1 650 852 1200  
fax +1 650 856 1098  
**[cushmanwakefield.com](http://cushmanwakefield.com)**



# PLUG & PLAY SUBLEASE DOWNTOWN REDWOOD CITY

2317 Broadway, Redwood City, California

## Interior Photos:



For more information, please contact:

**Eric Sorensen**

Director

+1 650 320 0234

[eric.c.sorensen@cushwake.com](mailto:eric.c.sorensen@cushwake.com)

LIC #01709528

**Marc Pope**

Executive Director

+1 650 401 2131

[marc.pope@cushwake.com](mailto:marc.pope@cushwake.com)

LIC #01474483

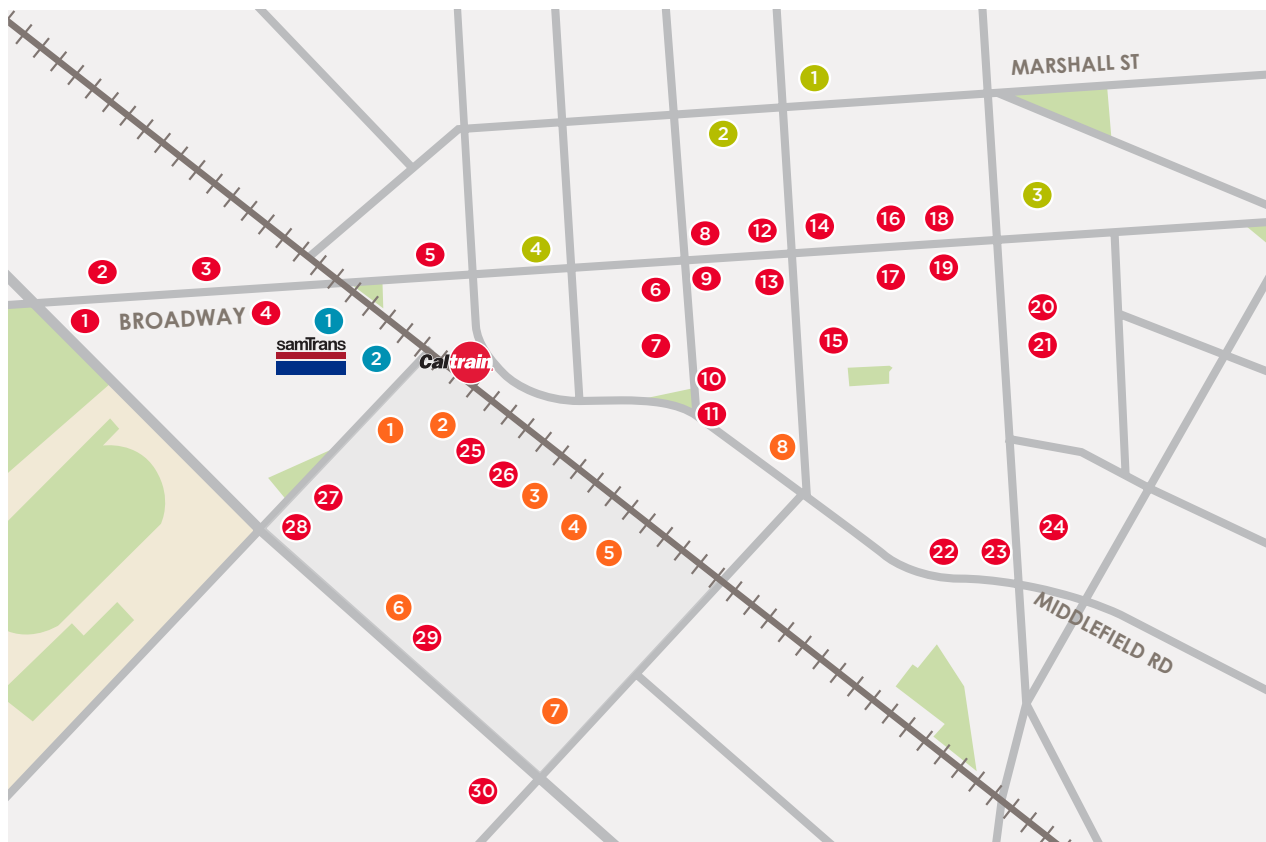
1950 University Avenue, Suite 220  
East Palo Alto, California 94303  
main +1 650 852 1200  
fax +1 650 856 1098  
[cushmanwakefield.com](http://cushmanwakefield.com)

Cushman & Wakefield Copyright 2017. No warranty or representation, express or implied, is made to the accuracy or completeness of the information contained herein, and same is submitted subject to errors, omissions, change of price, rental or other conditions, withdrawal without notice, and to any special listing conditions imposed by the property owner(s). As applicable, we make no representation as to the condition of the property (or properties) in question.

# PLUG & PLAY SUBLEASE DOWNTOWN REDWOOD CITY

2317 Broadway, Redwood City, California

## Downtown Redwood City Amenities:



### RESTAURANTS

- 1 Ike's
- 2 The City Pub
- 3 Peet's
- 4 Gourmet Haus
- 5 The Sandwich Spot
- 6 Quinto Sol
- 7 Cafe LaTatine
- 8 Sakura
- 9 Five Guys Burgers
- 10 Chipotle
- 11 Portabello Grill
- 12 Philz Coffee
- 13 Old Spaghetti Factory

- 14 Margaritas
- 15 Howie's Artisan Pizza
- 16 LV MAR
- 17 Suisha House
- 18 Vesta
- 19 MandaLoun
- 20 Martin's West
- 21 Angelica's Bistro
- 22 Donato
- 23 Milagros
- 24 Patty Shack
- 25 Subway
- 26 Noah's Bagels
- 27 Jamba Juice

- 28 Max's Restaurants
- 29 Panda Express
- 30 Whole Foods Market
- 31 Pizza my heart

### BANKS

- 1 Union Bank
- 2 Bank of America
- 3 Wells Fargo
- 4 Chase

### TRANSPORTATION

- 1 SamTrans Bus Station
- 2 CalTrain Sequoia Station

### RETAIL

- 1 CVS Pharmacy
- 2 Super Cuts
- 3 Starbuck's
- 4 Safeway
- 5 See's Candy
- 6 Barnes & Noble
- 7 Old Navy
- 8 Cost Plus World Market

For more information, please contact:

#### Eric Sorensen

Director  
+1 650 320 0234  
eric.c.sorensen@cushwake.com  
LIC #01709528

#### Marc Pope

Executive Director  
+1 650 401 2131  
marc.pope@cushwake.com  
LIC #01474483

1950 University Avenue, Suite 220  
East Palo Alto, California 94303  
main +1 650 852 1200  
fax +1 650 856 1098  
**cushmanwakefield.com**