

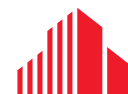


18010

PRIME TIME HEALTHCARE

22,377 SF OFFICE SUBLEASE

18010 BURT STREET
OMAHA, NE 68022



**CUSHMAN &
WAKEFIELD**

LUND
COMPANY

18010 BURT STREET

OMAHA, NE 68022

Property Features

A portion of this recently renovated Class A office building is now available for sublease within a revitalized and modern office campus. Renovated in 2023, the space features high-end finishes, efficient layouts, and modern workplace amenities. Ideally positioned just off of 180th and West Dodge Road, the property offers excellent exposure to 77,000 vehicles per day and sits in one of Omaha's most desirable submarkets. Contact the listing agents for more details!

Property Highlights

Building Size:	101,283 SF
Space Available:	22,377 SF
Min Divisible:	±5,000 SF
Max Divisible:	22,377 SF
Lease Rate:	\$19.50/PSF NNN
NNN Expenses:	\$11.50
Site Area:	6.59 Acres
Parking Ratio:	5:1000
Year Built/Renovated:	2012/2023
Floor:	Three (3)
Zoning:	Mixed Use (MU)

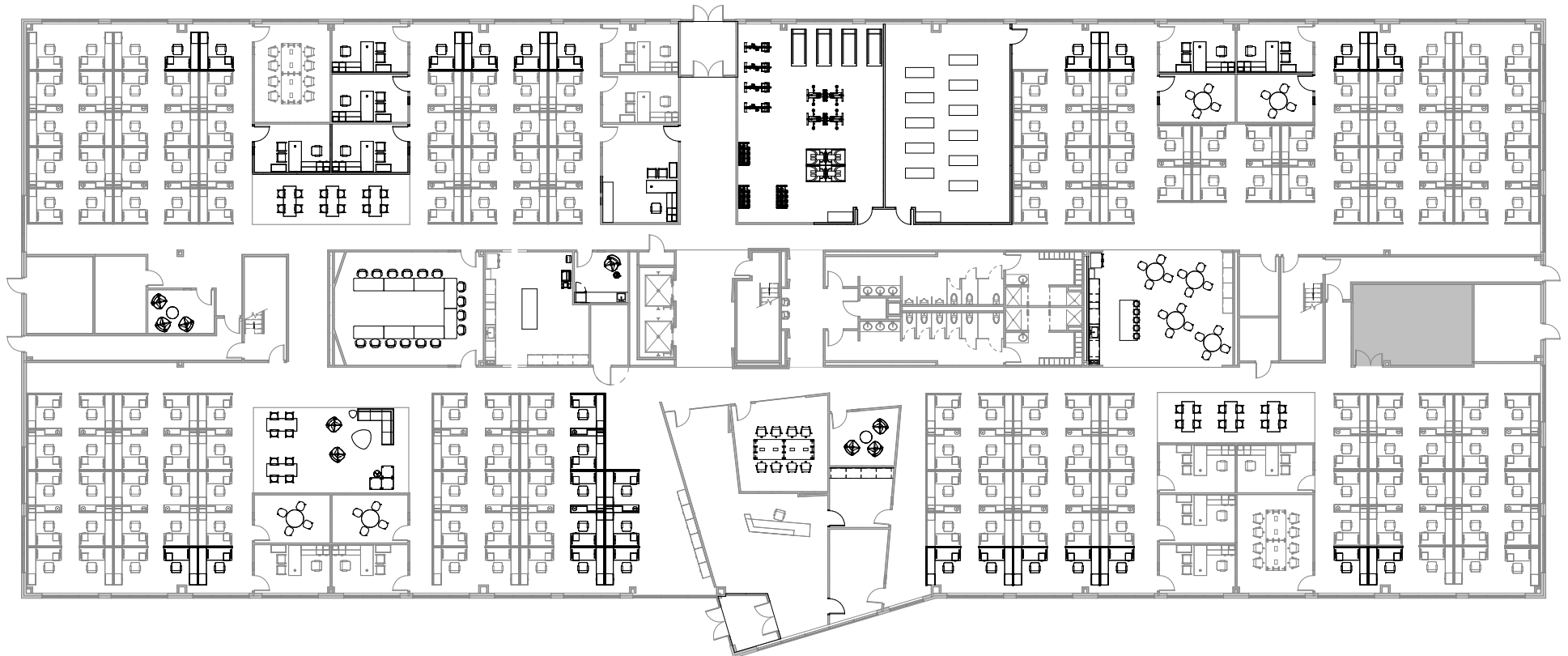


18010 BURT STREET

OMAHA, NE 68022

First Floor

±5,000 SF - 22,377 SF





18010 BURT STREET

OMAHA, NE 68022

Trade Map





PRIME TIME HEALTHCARE

FOR MORE INFORMATION, CONTACT:

MARC SIEMERS, SIOR

Senior Associate

+1 402 881 5035

marc.siemers@lundco.com

JAMES BOULAY, JR.

Associate

+1 402 594 5187

jj.boulay@lundco.com

Independently Owned and Operated / A Member of the Cushman & Wakefield Alliance

©2025 Cushman & Wakefield. All rights reserved. The information contained in this communication is strictly confidential.

This information has been obtained from sources believed to be reliable but has not been verified. NO WARRANTY OR REPRESENTATION, EXPRESS OR IMPLIED, IS MADE AS TO THE CONDITION OF THE PROPERTY (OR PROPERTIES) REFERENCED HEREIN OR AS TO THE ACCURACY OR COMPLETENESS OF THE INFORMATION CONTAINED HEREIN, AND SAME IS SUBMITTED SUBJECT TO ERRORS, OMISSIONS, CHANGE OF PRICE, RENTAL OR OTHER CONDITIONS, WITHDRAWAL WITHOUT NOTICE, AND TO ANY SPECIAL LISTING CONDITIONS IMPOSED BY THE PROPERTY OWNER(S). ANY PROJECTIONS, OPINIONS OR ESTIMATES ARE SUBJECT TO UNCERTAINTY AND DO NOT SIGNIFY CURRENT OR FUTURE PROPERTY PERFORMANCE.



**CUSHMAN &
WAKEFIELD**

LUND
COMPANY