

FOR SALE

TWO-STORY OFFICE BUILDING



705 YORK RD
TOWSON, MD 21204



PROPERTY HIGHLIGHTS

Two-story office building in the heart of Towson

Walking distance to extensive amenity base in Towson

Unmatched building signage and exposure off York Road

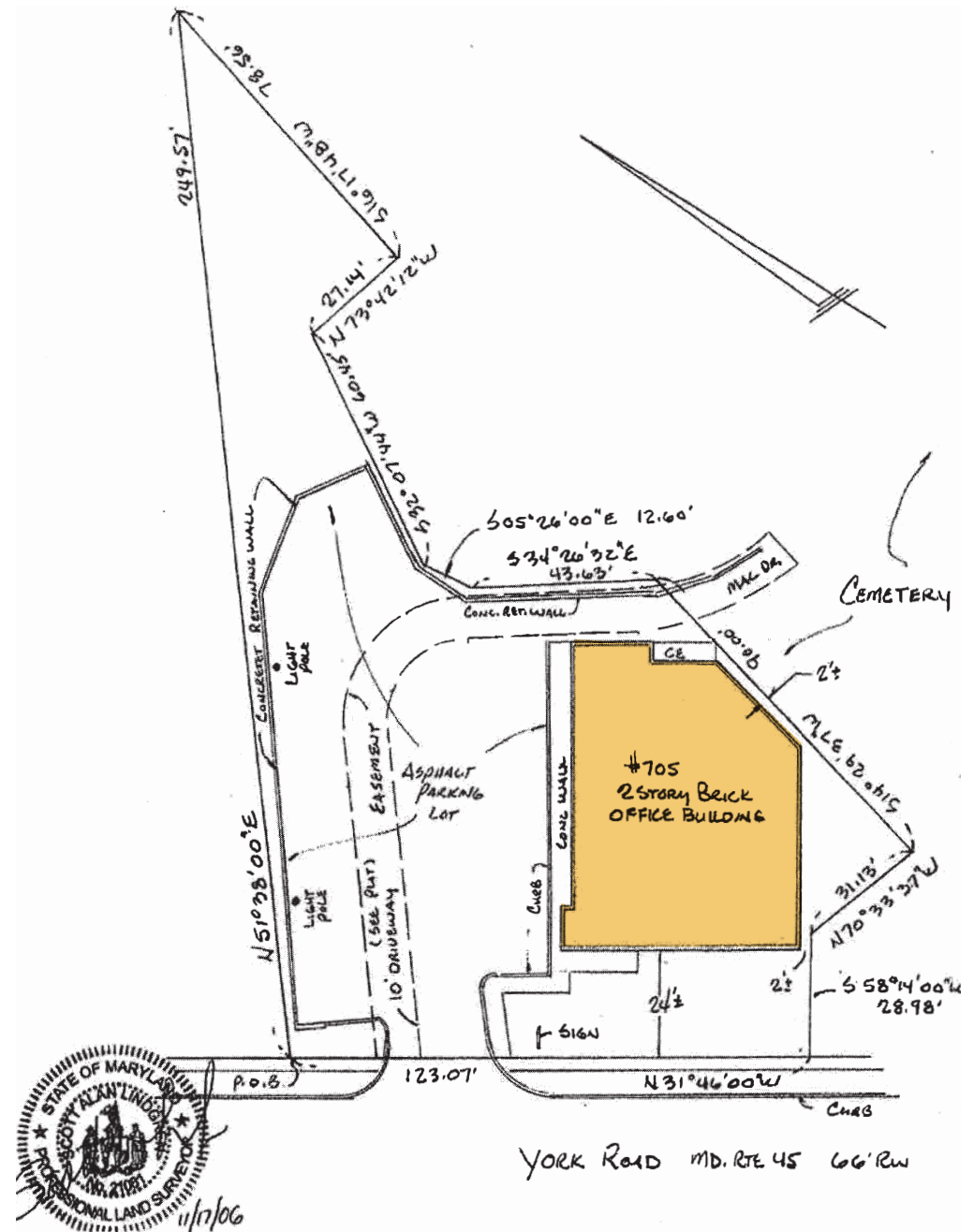
Ideal owner-occupant opportunity

22 surface parking spaces

Built in 1988

New roof installed in 2008

HVAC - Packaged roof mounted units



* All square footage are estimates and any buyer should verify as needed. Seller and Cushman & Wakefield can not confirm exact usable and rentable numbers.

The floor plan of the first floor of the New York State Office Building includes the following rooms and dimensions:

- VESTIBULE
- MELANE 8-0 X 8-6
- CHRIS 8-0 X 12-0
- SARAH
- BOBBY SPAGNARD 18-0 X 12-0
- BARBARA 8-0 X 10-0
- RECEPTION 5-0 X 9-0
- ELEC. RM. 9-0 X 7-0
- MIKE M. 12-6 X 8-0
- COFFEE SUPPLY 8-0 X 5-6
- WOMEN'S TOILET
- COFFEE 15-0 X 8-0
- JACK
- CONF. 1 21-0 X 17-0
- CONF. 2 21-0 X 10-0
- HARRIET 12-0 X 12-0
- MEN'S TOILET
- SMOKE 8-0 X 10-0



CONTACTS

CHARLES FENWICK

Managing Director
charles.fenwick@cushwake.com

LIZZY SWEENEY

Senior Director
lizzy.sweeney@cushwake.com

ALEX LIGHT

Associate
alex.light@cushwake.com

©2025 Cushman & Wakefield. All rights reserved.
The information contained in this communication is strictly confidential. This information has been obtained from sources believed to be reliable but has not been verified. NO WARRANTY OR REPRESENTATION, EXPRESS OR IMPLIED, IS MADE AS TO THE CONDITION OF THE PROPERTY (OR PROPERTIES) REFERENCED HEREIN OR AS TO THE ACCURACY OR COMPLETENESS OF THE INFORMATION CONTAINED HEREIN, AND SAME IS SUBMITTED SUBJECT TO ERRORS, OMISSIONS, CHANGE OF PRICE, RENTAL OR OTHER CONDITIONS, WITHDRAWAL WITHOUT NOTICE, AND TO ANY SPECIAL LISTING CONDITIONS IMPOSED BY THE PROPERTY OWNER(S). ANY PROJECTIONS, OPINIONS OR ESTIMATES ARE SUBJECT TO UNCERTAINTY AND DO NOT SIGNIFY CURRENT OR FUTURE PROPERTY PERFORMANCE.

TOWSON COMMONS



TOWSON TOWN CENTER



DULANEY PLAZA



TOWSON SQUARE



TOWSON ROW



TOWSON STATION

