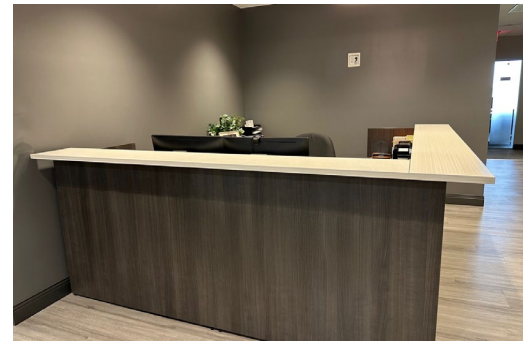


# CLASS A OFFICE SUBLEASE

10,000 - 25,341 RSF  
Suite 600



5550 Peachtree Parkway  
Peachtree Corners, GA 30092



**\$14.50/SF**  
Full-Service Rate



**8/31/2028**  
Sublease Expiration



**IMMEDIATE**  
Occupancy



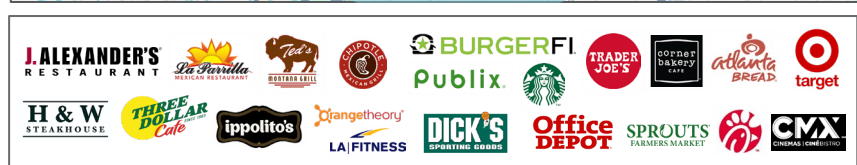
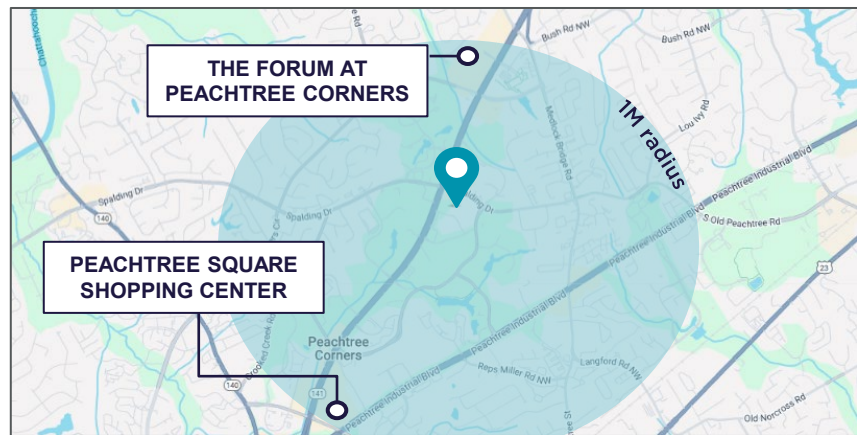
**INCLUDED**  
FF&E



**4.5/1,000 SF**  
Free Parking

## Space Highlights

- Class A Office in excellent location
- Fully furnished
- Available immediately
- On-site conference center, fitness center, half-basketball court, sand volleyball court and patio bar with ample seating
- Access to 11+ miles of hiking trails
- Abundant nearby dining, retail and amenities within a 1-mile radius



### CONTACT:

**CLINTON MCKELLAR**  
Executive Director  
(404) 853 5203  
[clinton.mckellar@cushwake.com](mailto:clinton.mckellar@cushwake.com)  
License #340836

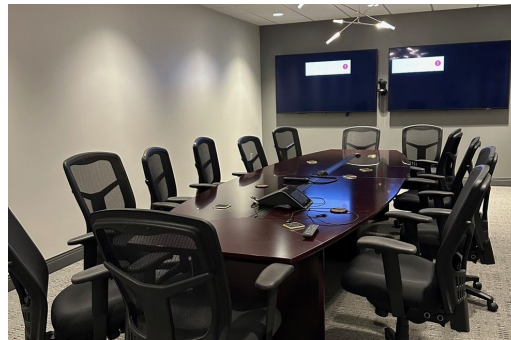
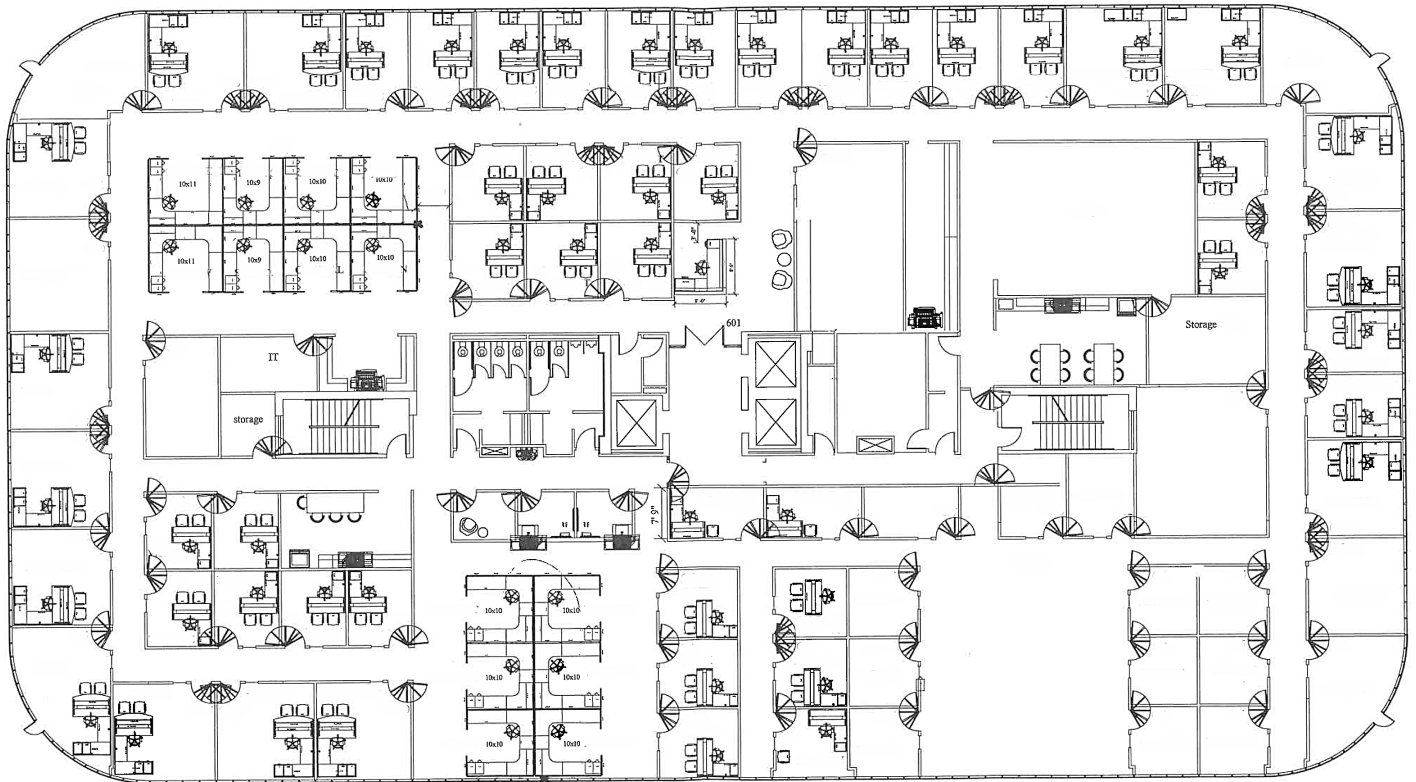
**SYDNEY MAYSON**  
Director  
(404) 853 5210  
[sydney.mayson@cushwake.com](mailto:sydney.mayson@cushwake.com)  
License #403121

**CUSHMAN & WAKEFIELD, INC.**  
1180 Peachtree Street, NE  
Suite 3100  
Atlanta, Georgia 30309  
[www.cushmanwakefield.com](http://www.cushmanwakefield.com)

# OFFICE SUBLEASE

# 10,000-25,341 SF

5550 Peachtree Parkway  
**Suite 600**  
Peachtree Corners, GA



## CONTACT:

**CLINTON MCKELLAR**  
Executive Director  
(404) 853 5203  
[clinton.mckellar@cushwake.com](mailto:clinton.mckellar@cushwake.com)  
License #340836

**SYDNEY MAYSON**  
Director  
(404) 853 5210  
[sydney.mayson@cushwake.com](mailto:sydney.mayson@cushwake.com)  
License #403121



1180 Peachtree Street, NE, Suite 3100  
Atlanta, Georgia 30309  
[www.cushmanwakefield.com](http://www.cushmanwakefield.com)