

8327 - 8339 EASTLAKE DRIVE

BURNABY, BC



# east|lake

CAMPUS

CAMPUS-STYLE DEVELOPMENT FOR LEASE



# eastlake

CAMPUS

310,000 SF | 6-BUILDING CAMPUS

Eastlake Campus is the perfect hub for bringing ideas to life. Located in the bustling Lake City business district of Burnaby, BC, just a stone's throw from Vancouver, Eastlake Campus offers a prime Metro Vancouver location. The campus offers different access to SkyTrain and main thoroughfare, providing easy commutes to "throughout the Lower Mainland."

Totaling 310,000 SF, Eastlake Campus features six multi-tenant or build-to-suit flex-style buildings. The state-of-the-art concrete construction, customizable spaces, and proximity to amenities provide an unparalleled work environment - all set within a beautifully landscaped, campus-style setting.

OFFICE & LIGHT INDUSTRIAL BAYS

AVAILABLE FROM 2,000 SF - 10,000+ SF

GRADE LOADING  
DOORS

WAREHOUSE CEILING  
HEIGHT: 20' - 24'

OFFICE/SHOWROOM  
CEILING HEIGHT: 13'

10 MIN WALK TO  
SKYTRAIN

BIKE LOCKING  
LOCATIONS AND  
END-OF-TRIP  
FACILITIES WITH  
SHOWERS

CLOSE PROXIMITY  
TO TRANS-CANADA  
AND LOUGHEED  
HIGHWAYS





# east|ake

CAMPUS

EASTLAKE DRIVE

8339



Phase 3

8337



Phase 3

8333



Phase 2

8331



Phase 2

8329



Phase 1

8327



Phase 1



# current

## AVAILABILITIES

### 8331 Eastlake Drive

Suite	SF	Availability	Lease Rate
108	2,060 SF	Now	Contact Leasing Agents
109/110	4,120 SF	Now	Contact Leasing Agents
111	2,060 SF	Now	Contact Leasing Agents
109/110/111*	6,180 SF	Now	Contact Leasing Agents
113/114**	4,026 SF	Now	Contact Leasing Agents

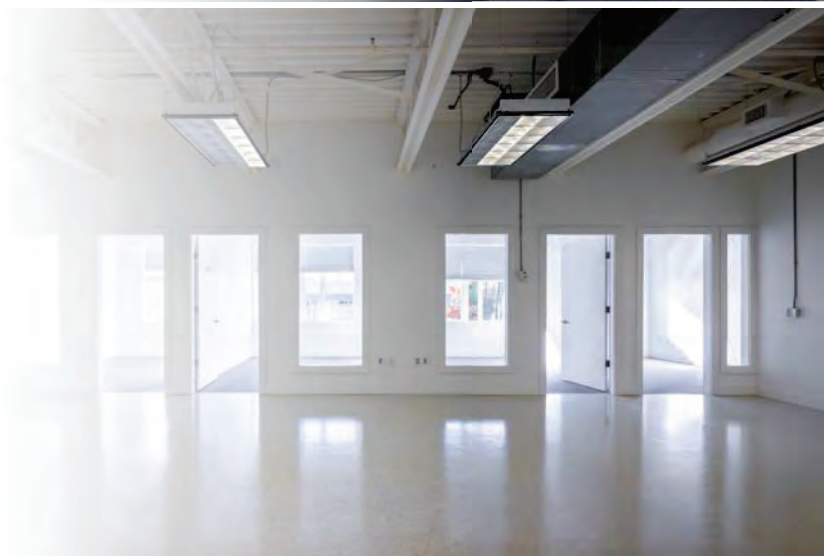
\*TAXES & OPERATING COST | \$12.59 PSF per annum (Est. 2025)

\*\*TAXES & OPERATING COST | \$13.24 PSF per annum (Est. 2025)

### 8337 Eastlake Drive

Suite	SF	Availability	Lease Rate
116*	1,920 SF	Now	Contact Leasing Agents
118*	2,014 SF	Now	Contact Leasing Agents

\*TAXES & OPERATING COST | \$12.68 PSF per annum (Est. 2025)



# explore the

## NEIGHBOURHOOD

### DINING

1. Cafe Artigiano
2. Canadian Pizza Plus
3. Foodies on Board
4. Megabite Pizza
5. Rod's Kitchen & Grill
6. Sandwich Tree
7. Subway
8. Sushia
9. Ultra Wave

### RETAIL

1. Prostock Athletic Supply
2. Race Face Components
3. Two Way Hockey
4. United Library Services - BC Division

### FITNESS & RECREATION

1. P&B Dance Unlimited Studios

### SKYTRAIN STATION

1. Production Way-University



# prime location

IN THE HEART OF BURNABY

east|lake  
CAMPUS

W. VANCOUVER

N. VANCOUVER

VANCOUVER

BURNABY

NEW WESTMINSTER

SURREY

COQUITLAM

PORT COQUITLAM

PITT MEADOWS

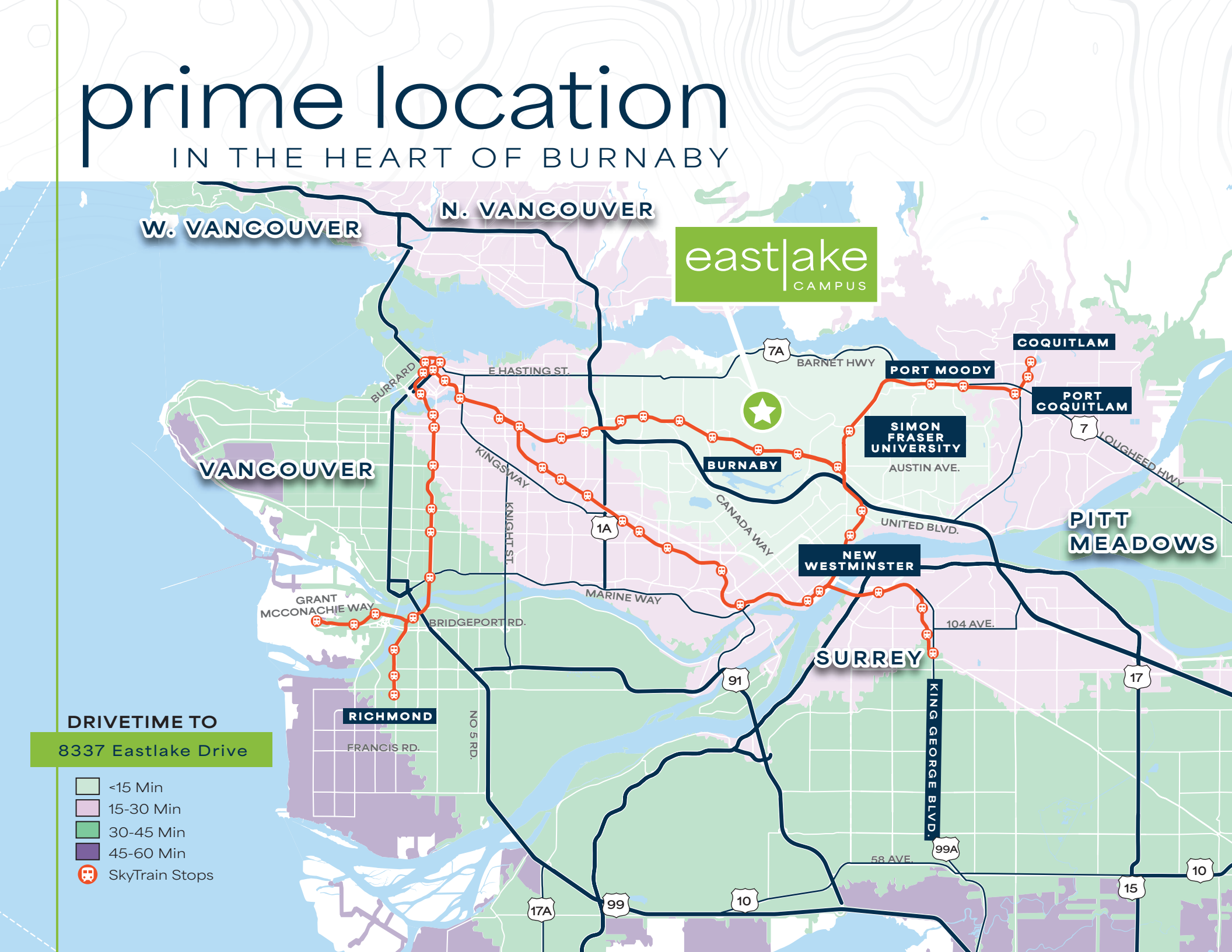
PORT MOODY

SIMON FRASER  
UNIVERSITY  
AUSTIN AVE.

RICHMOND

DRIVETIME TO  
8337 Eastlake Drive

- <15 Min
- 15-30 Min
- 30-45 Min
- 45-60 Min
-  SkyTrain Stops





# eastlake

CAMPUS



8327 - 8339 EASTLAKE DRIVE

BURNABY, BC

## CONTACT US

### LIAM BOULTBEE

Senior Associate

604 629 5023

[liam.boulton@cushwake.com](mailto:liam.boulton@cushwake.com)

### ETHAN REGAN

Associate

604-608-5916

[ethan.regan@cushwake.com](mailto:ethan.regan@cushwake.com)

### ROGER LEGGATT

Personal Real Estate Corporation

Executive Vice President

604 640 5882

[roger.leggatt@cushwake.com](mailto:roger.leggatt@cushwake.com)

### MAX ZESSEL

Personal Real Estate Corporation

Senior Vice President

604 640 5824

[max.zessel@cushwake.com](mailto:max.zessel@cushwake.com)

©2025 Cushman & Wakefield. All rights reserved. The information contained in this communication is strictly confidential. This information has been obtained from sources believed to be reliable but has not been verified. NO WARRANTY OR REPRESENTATION, EXPRESS OR IMPLIED, IS MADE AS TO THE CONDITION OF THE PROPERTY (OR PROPERTIES) REFERENCED HEREIN OR AS TO THE ACCURACY OR COMPLETENESS OF THE INFORMATION CONTAINED HEREIN, AND SAME IS SUBMITTED SUBJECT TO ERRORS, OMISSIONS, CHANGE OF PRICE, RENTAL OR OTHER CONDITIONS, WITHDRAWAL WITHOUT NOTICE, AND TO ANY SPECIAL LISTING CONDITIONS IMPOSED BY THE PROPERTY OWNER(S). ANY PROJECTIONS, OPINIONS OR ESTIMATES ARE SUBJECT TO UNCERTAINTY AND DO NOT SIGNIFY CURRENT OR FUTURE PROPERTY PERFORMANCE. COE-PM-West-01.17.2025