

±493,875 SF CROSSDOCK INDUSTRIAL PROPERTY FOR SUBLEASE

# 2510 - 2580 WEST WALNUT AVENUE

RIALTO, CA 92376



FOR MORE INFORMATION, CONTACT:

**Phil Lombardo**  
909 942 4678  
phil.lombardo@cushwake.com  
Lic. No: 00892477

**Andrew Starnes**  
909 942 4667  
andrew.starnes@cushwake.com  
Lic. No: 01799801

**Cruise Adams**  
909 942 4641  
cruise.adams@cushwake.com  
Lic. No: 02075368



Cushman & Wakefield - Ontario // 901 N. Via Piemonte, Suite 200 // Ontario, CA 91764 // [www.cushmanwakefield.com](http://www.cushmanwakefield.com)



# BUILDING FEATURES



Sublease Term through May 31, 2028



±493,875 SF - Part of larger ±1,197,051 SF



Lot Size: 51.06 AC



Crossdock



32' Clear Height



±19,197 SF Office Space  
(NE Ofc 6,370 SF; NW Ofc 5,263 SF; Whse Ofc 7,564 SF)



70 Dock High Loading Doors; 35 with Load Leveler Equipment



2 Grade Level Doors



Fully Secured 175' Truck Court



ESFR Sprinkler Sytem



Heavy Power - 4,000 Amps



301 Auto Parking Spaces;  
55 Trailer Parking Spaces

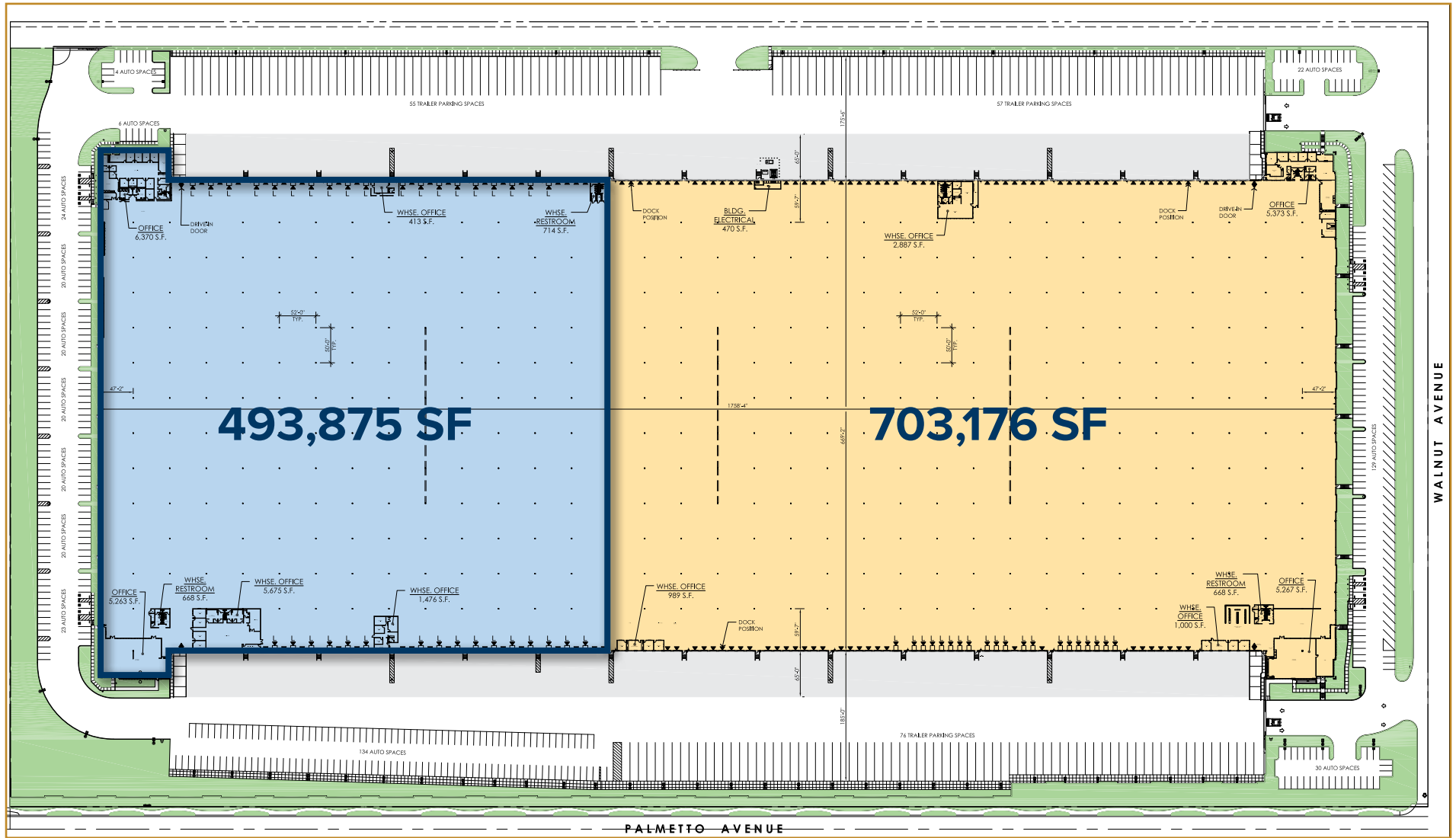


Easy Access to CA-210 Freeway



# SITE PLAN

2510 - 2580 WEST WALNUT AVENUE  
RIALTO, CA 92376



# FLOOR PLANS

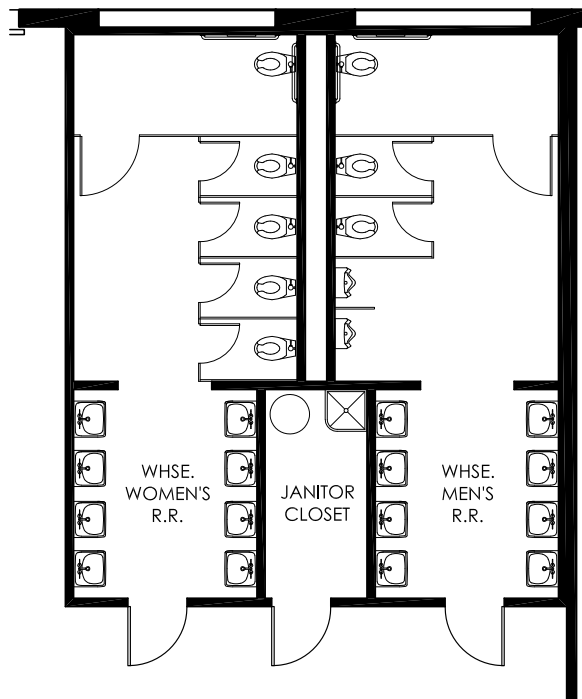
2510 - 2580 WEST WALNUT AVENUE  
RIALTO, CA 92376

## NORTHEAST OFFICE

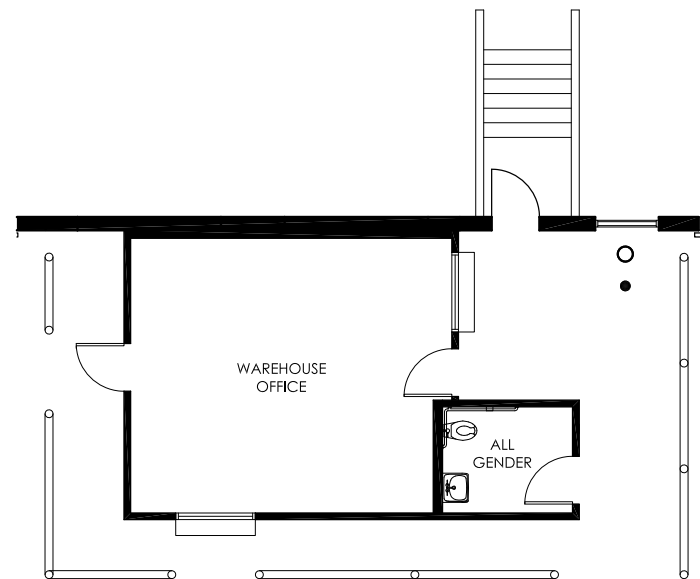


# FLOOR PLANS

NE WAREHOUSE RESTROOM



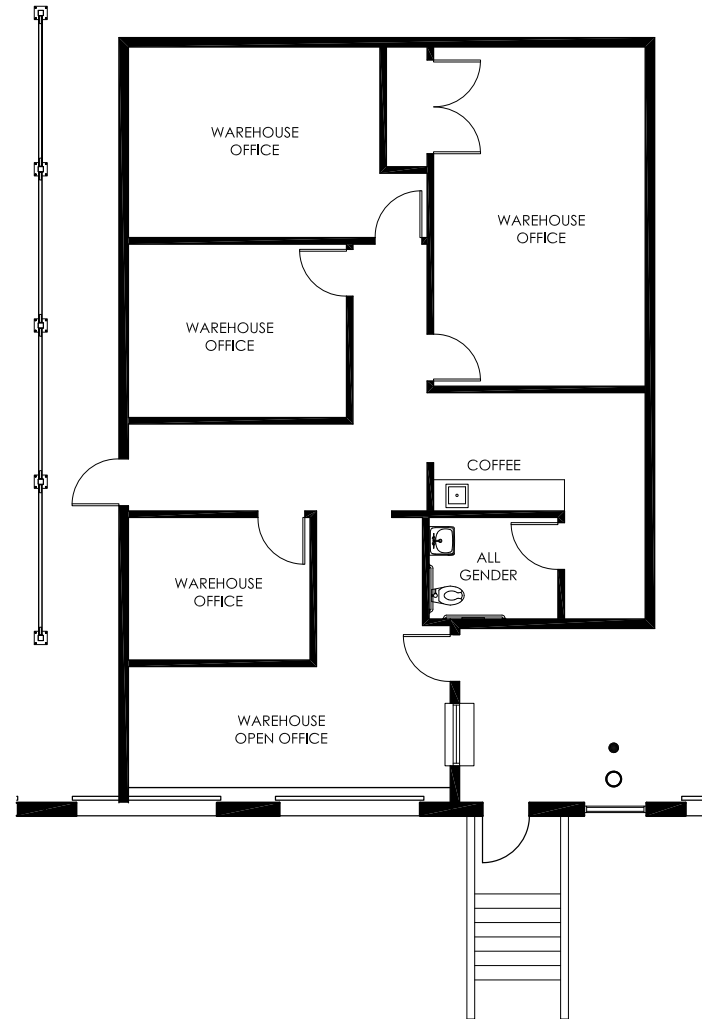
NE WAREHOUSE OFFICE/RESTROOM



# FLOOR PLANS

2510 - 2580 WEST WALNUT AVENUE  
RIALTO, CA 92376

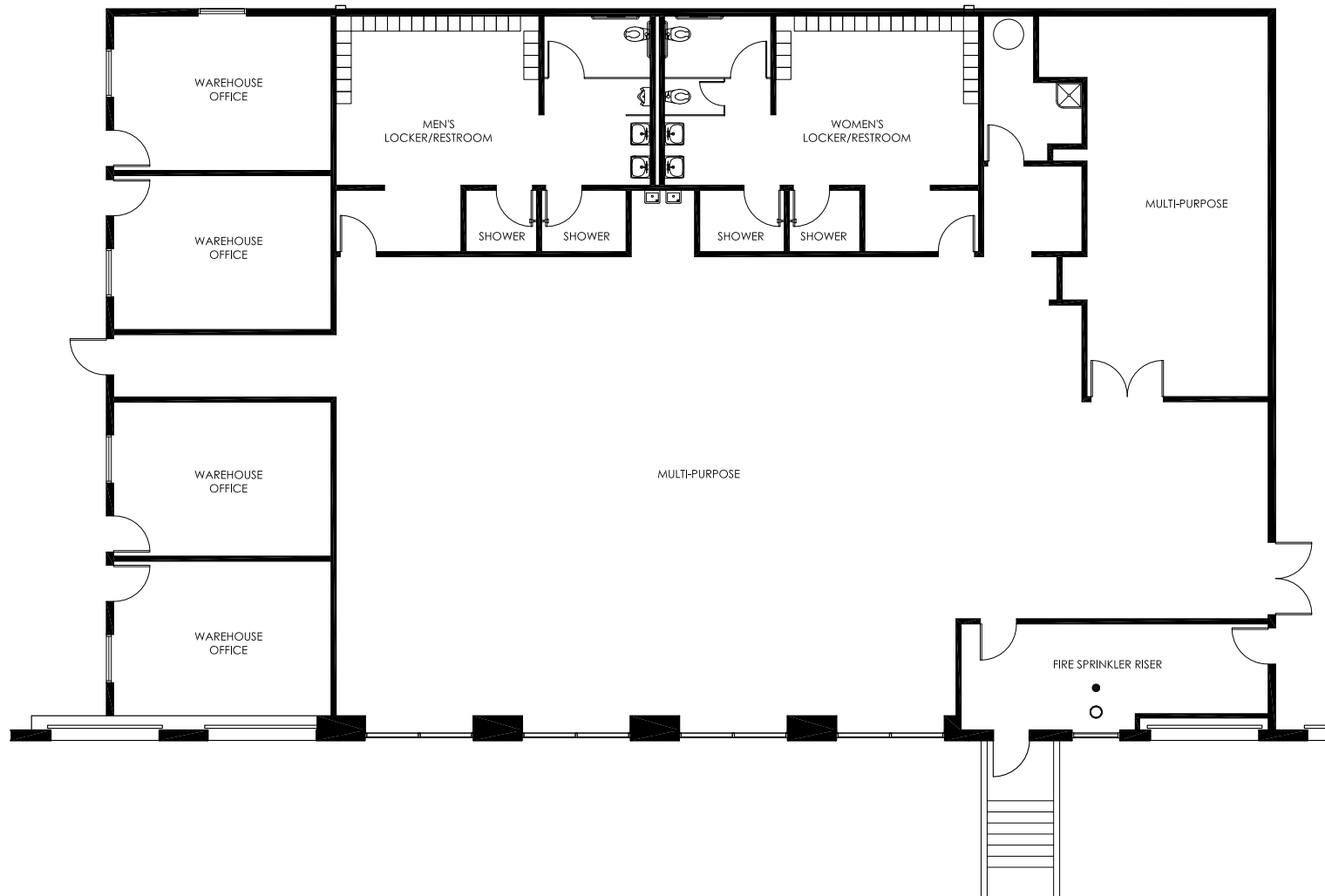
## NE WAREHOUSE OFFICE/RESTROOM



# FLOOR PLANS

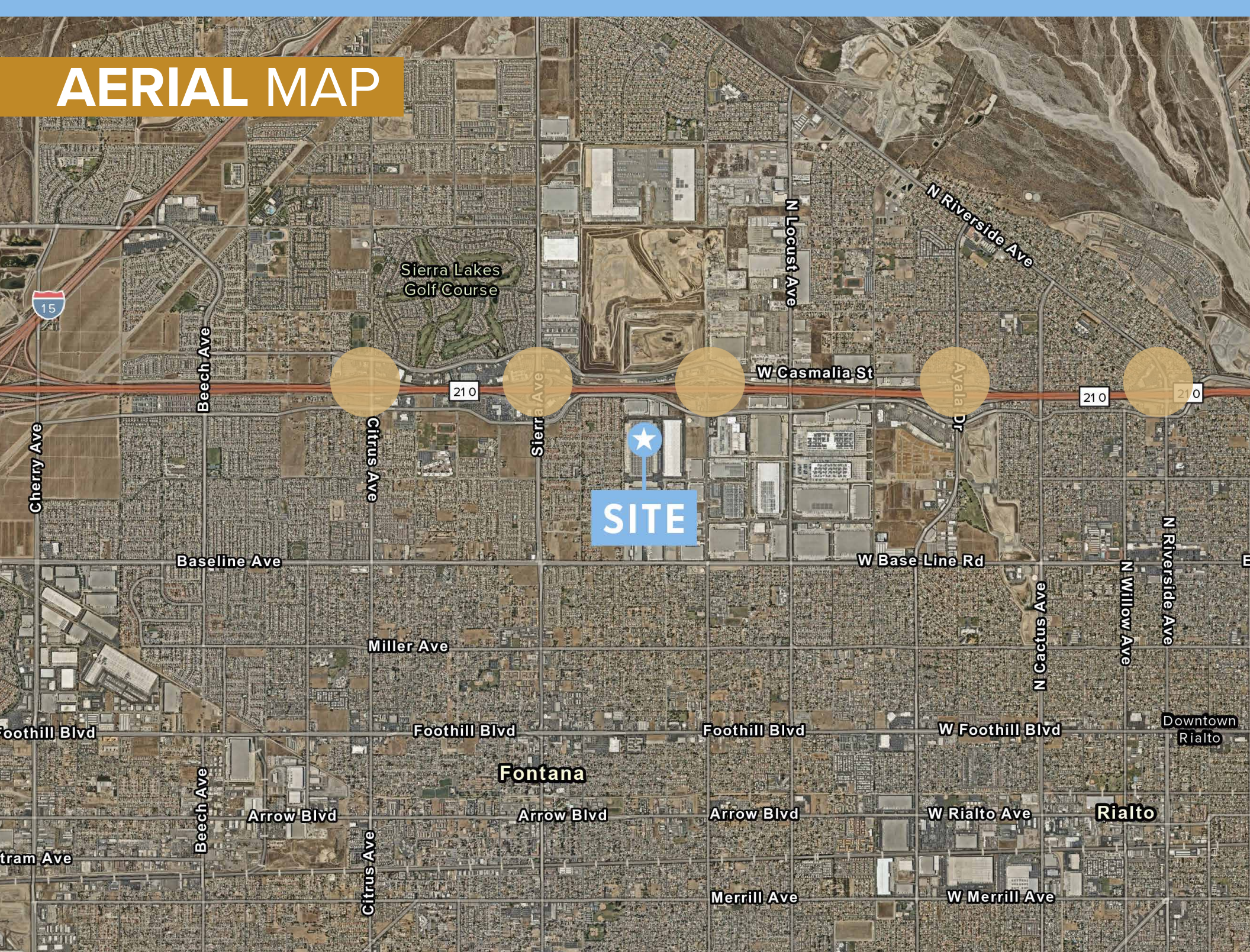
2510 - 2580 WEST WALNUT AVENUE  
RIALTO, CA 92376

## NW WAREHOUSE OFFICE



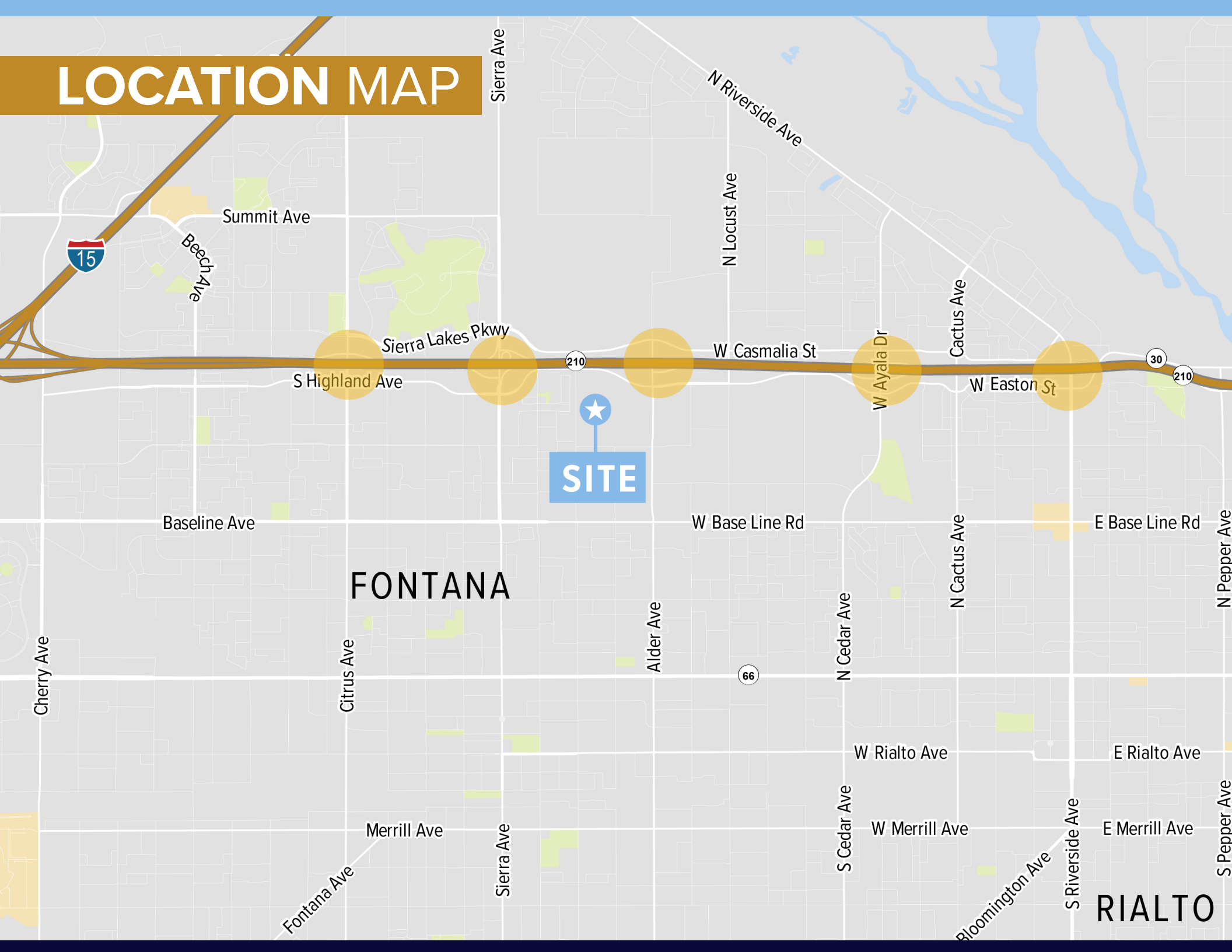


# AERIAL MAP





# LOCATION MAP



# 2510 - 2580 WEST WALNUT AVENUE

RIALTO, CA 92376



## FOR MORE INFORMATION, CONTACT:

**Phil Lombardo**  
909 942 4678  
phil.lombardo@cushwake.com  
Lic. No: 00892477

**Andrew Starnes**  
909 942 4667  
andrew.starnes@cushwake.com  
Lic. No: 01799801

**Cruise Adams**  
909 942 4641  
cruise.adams@cushwake.com  
Lic. No: 02075368



©2025 Cushman & Wakefield. All rights reserved. The information contained in this communication is strictly confidential. This information has been obtained from sources believed to be reliable but has not been verified. NO WARRANTY OR REPRESENTATION, EXPRESS OR IMPLIED, IS MADE AS TO THE CONDITION OF THE PROPERTY (OR PROPERTIES) REFERENCED HEREIN OR AS TO THE ACCURACY OR COMPLETENESS OF THE INFORMATION CONTAINED HEREIN, AND SAME IS SUBMITTED SUBJECT TO ERRORS, OMISSIONS, CHANGE OF PRICE, RENTAL OR OTHER CONDITIONS, WITHDRAWAL WITHOUT NOTICE, AND TO ANY SPECIAL LISTING CONDITIONS IMPOSED BY THE PROPERTY OWNER(S). ANY PROJECTIONS, OPINIONS OR ESTIMATES ARE SUBJECT TO UNCERTAINTY AND DO NOT SIGNIFY CURRENT OR FUTURE PROPERTY PERFORMANCE. COE-PM-WEST- 07/02/25