

±703,176 SF CROSSDOCK INDUSTRIAL PROPERTY FOR SUBLEASE

2510 - 2580 WEST WALNUT AVENUE

RIALTO, CA 92376



FOR MORE INFORMATION, CONTACT:

Phil Lombardo
909 942 4678
phil.lombardo@cushwake.com
Lic. No: 00892477

Andrew Starnes
909 942 4667
andrew.starnes@cushwake.com
Lic. No: 01799801

Cruise Adams
909 942 4641
cruise.adams@cushwake.com
Lic. No: 02075368



Cushman & Wakefield - Ontario // 901 N. Via Piemonte, Suite 200 // Ontario, CA 91764 // www.cushmanwakefield.com

BUILDING FEATURES



Sublease Term through May 31, 2028



±703,176 SF - Part of larger ±1,197,051 SF



Lot Size: 51.06 AC



Crossdock



32' Clear Height



±15,516 SF Office Space
(SE Ofc 5,373 SF; SW Ofc 5,267 SF; Whse Ofc 4,876 SF)



106 Dock High Loading Doors; 20 with Load Leveler Equipment



2 Grade Level Doors



Fully Secured 175' Truck Court



ESFR Sprinkler Sytem



Heavy Power - 4,000 Amps



181 Auto Parking Spaces;
133 Trailer Parking Spaces

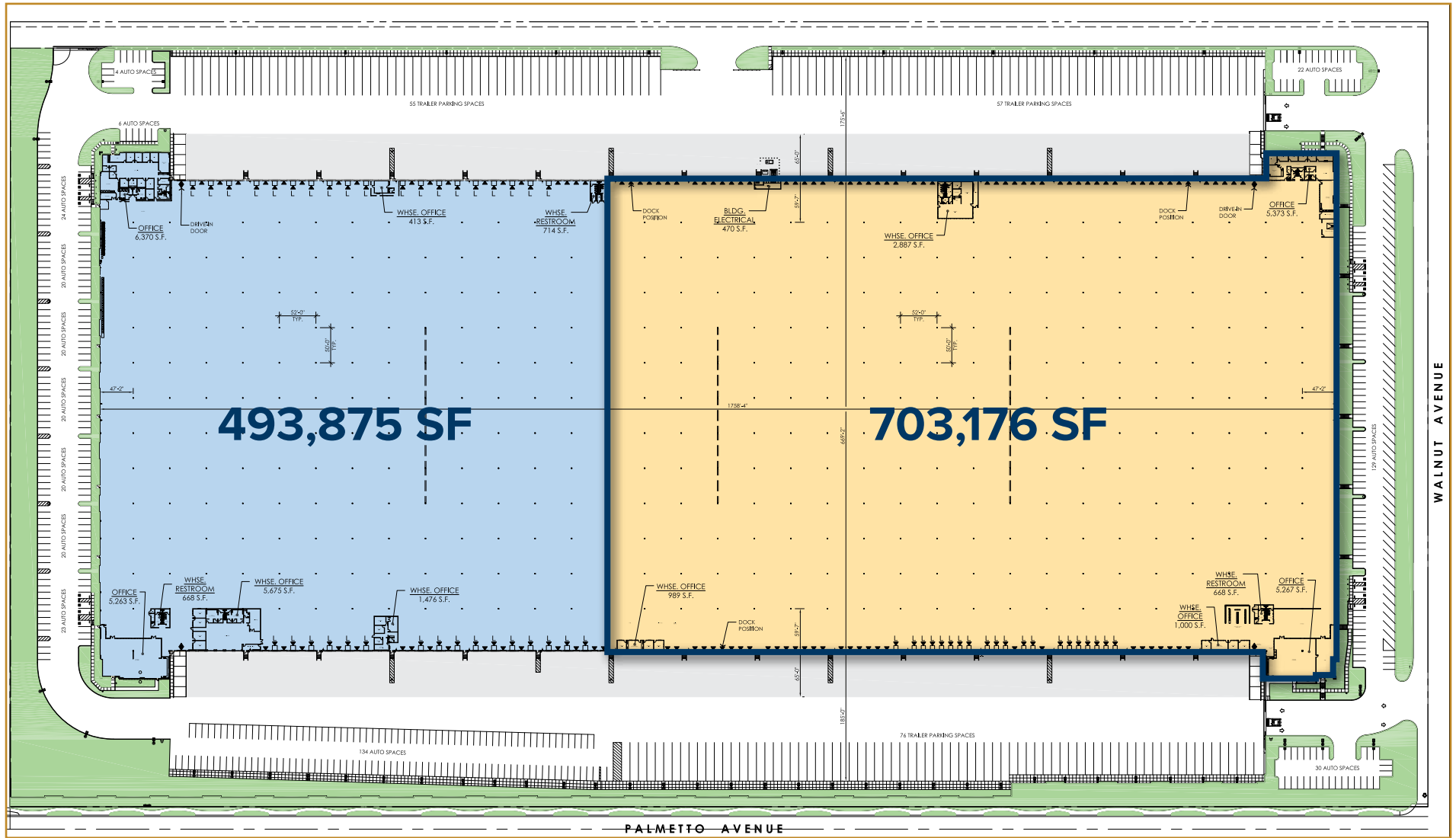


Easy Access to CA-210 Freeway



SITE PLAN

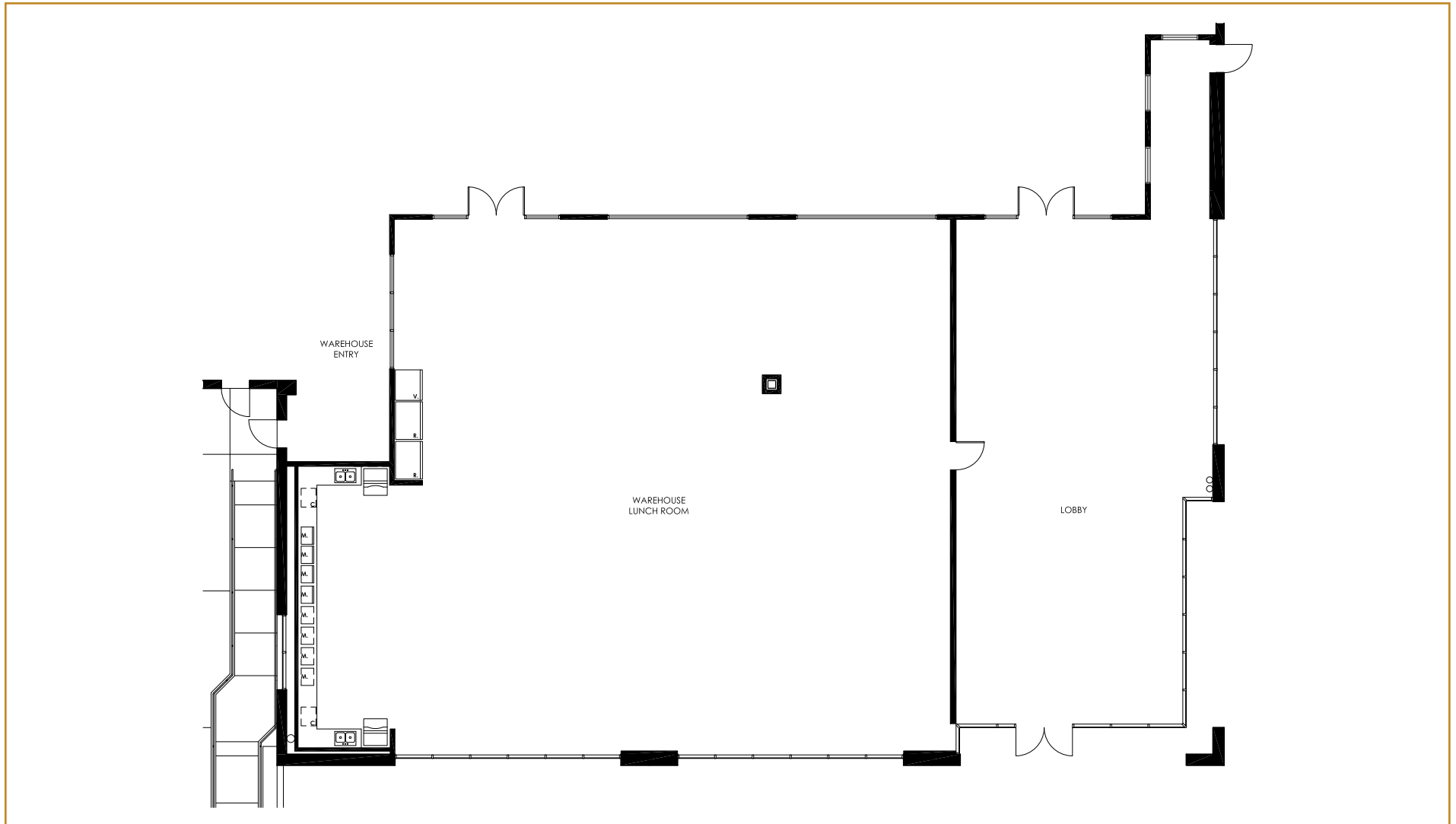
2510 - 2580 WEST WALNUT AVENUE
RIALTO, CA 92376



FLOOR PLANS

2510 - 2580 WEST WALNUT AVENUE
RIALTO, CA 92376

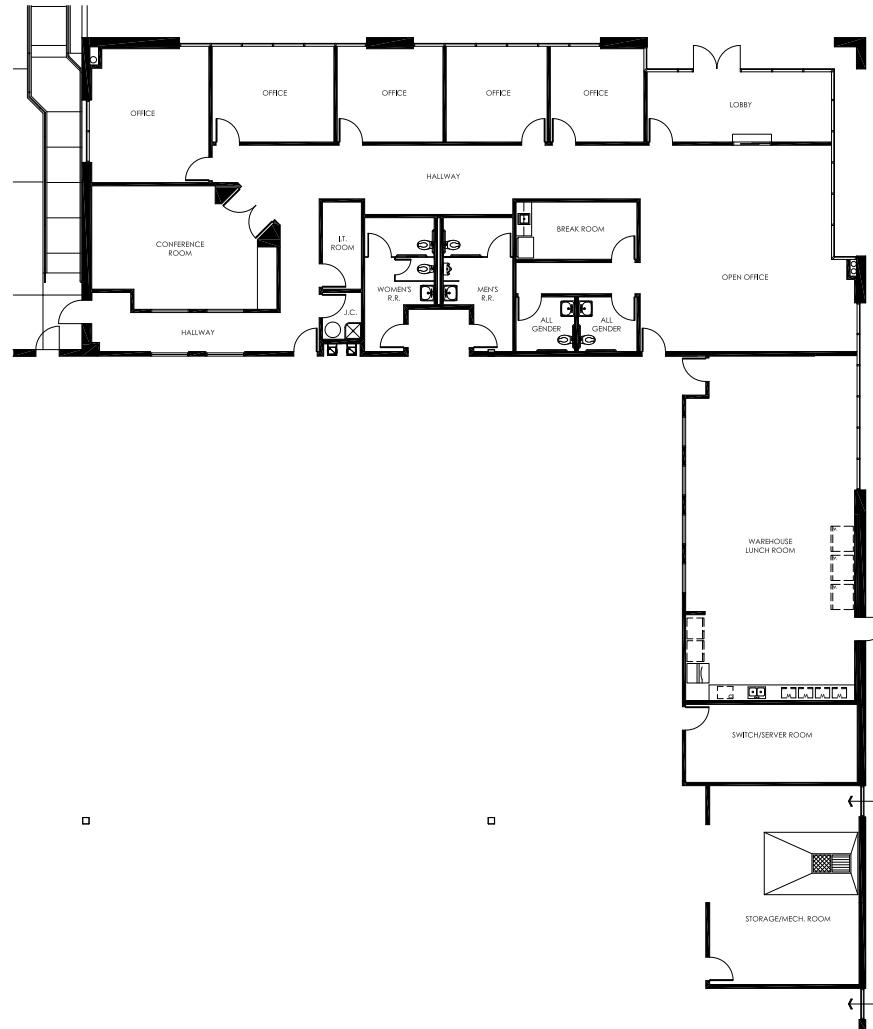
SOUTHWEST OFFICE



FLOOR PLANS

2510 - 2580 WEST WALNUT AVENUE
RIALTO, CA 92376

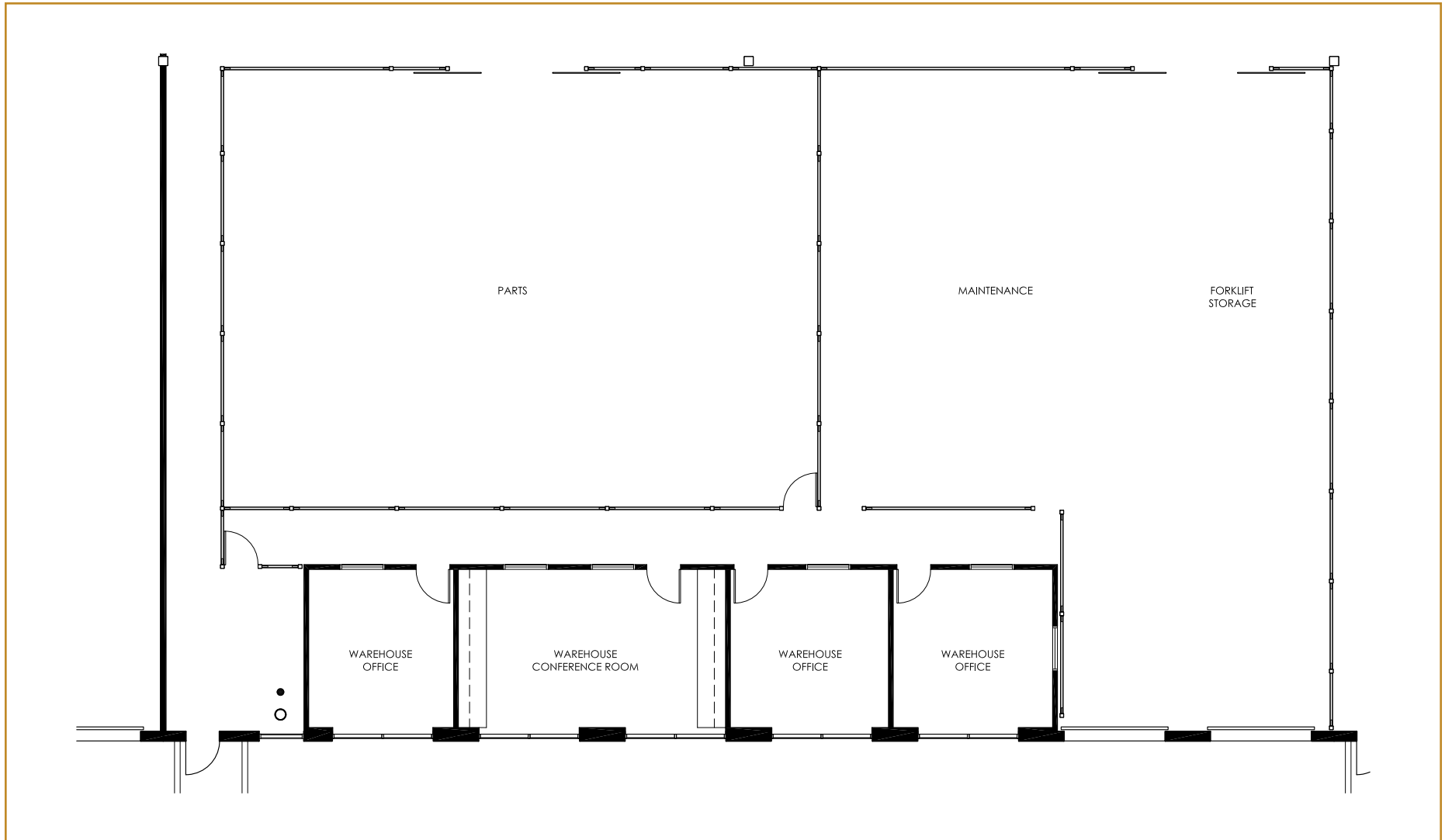
SOUTHEAST OFFICE



FLOOR PLANS

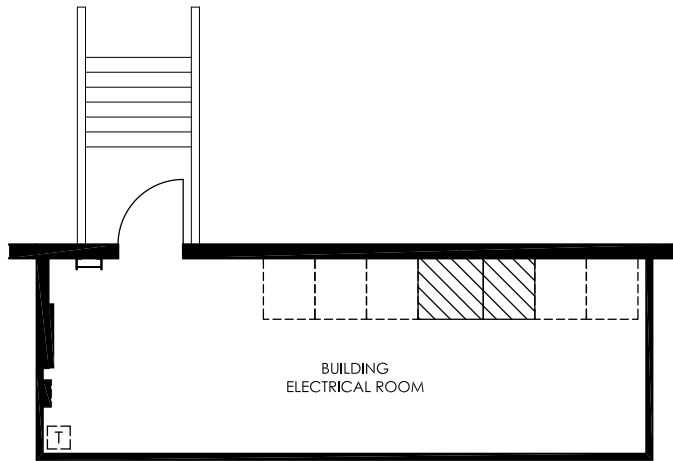
2510 - 2580 WEST WALNUT AVENUE
RIALTO, CA 92376

SW WAREHOUSE OFFICE

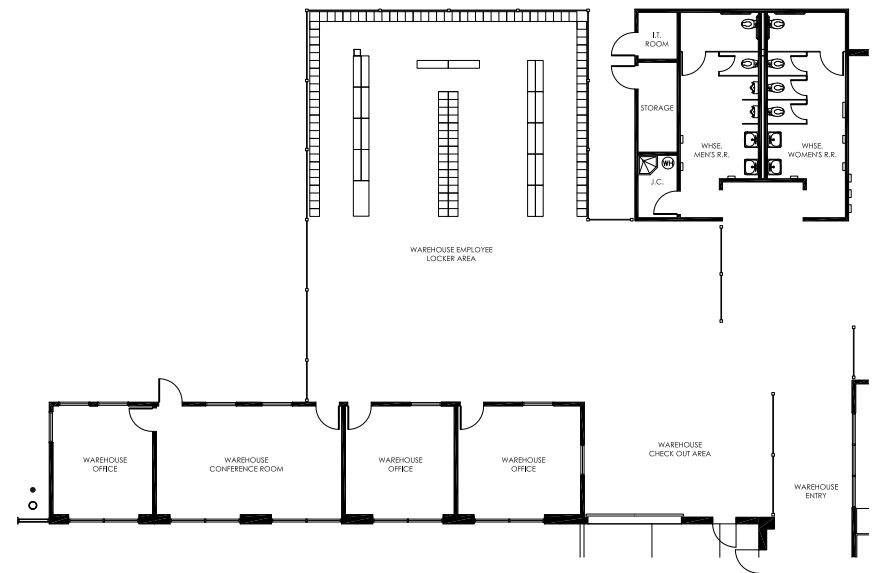


FLOOR PLANS

BUILDING ELECTRICAL ROOM



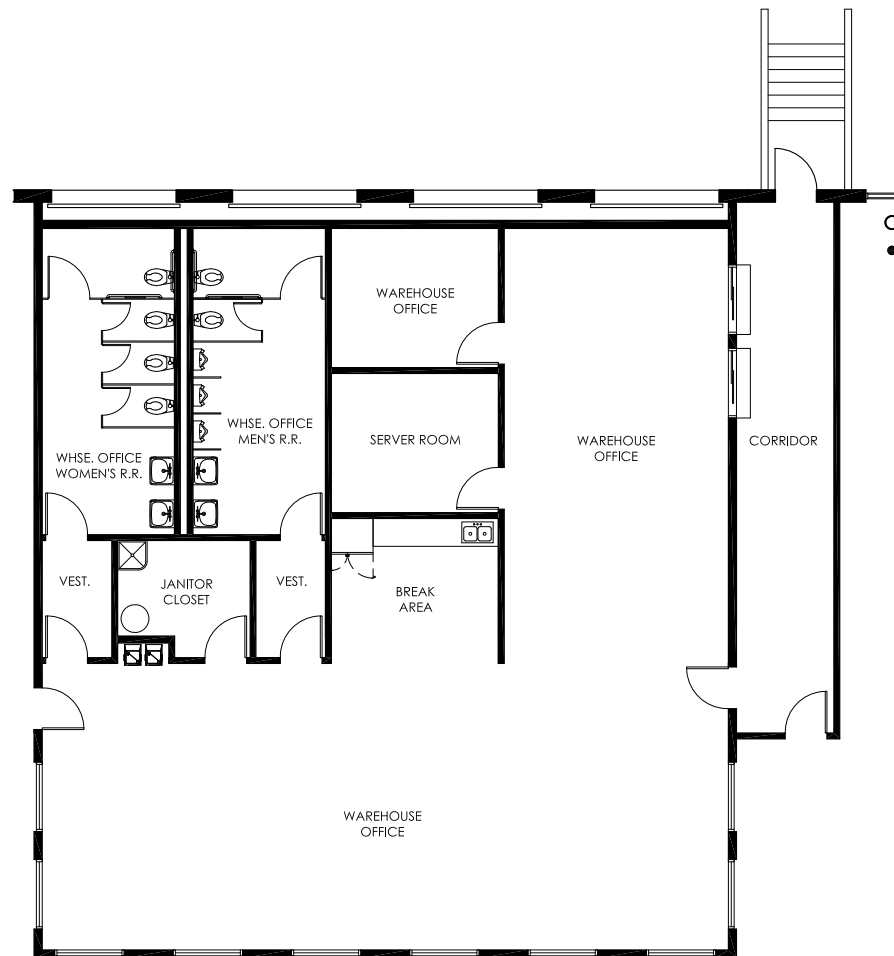
SW WAREHOUSE OFFICE



FLOOR PLANS

2510 - 2580 WEST WALNUT AVENUE
RIALTO, CA 92376

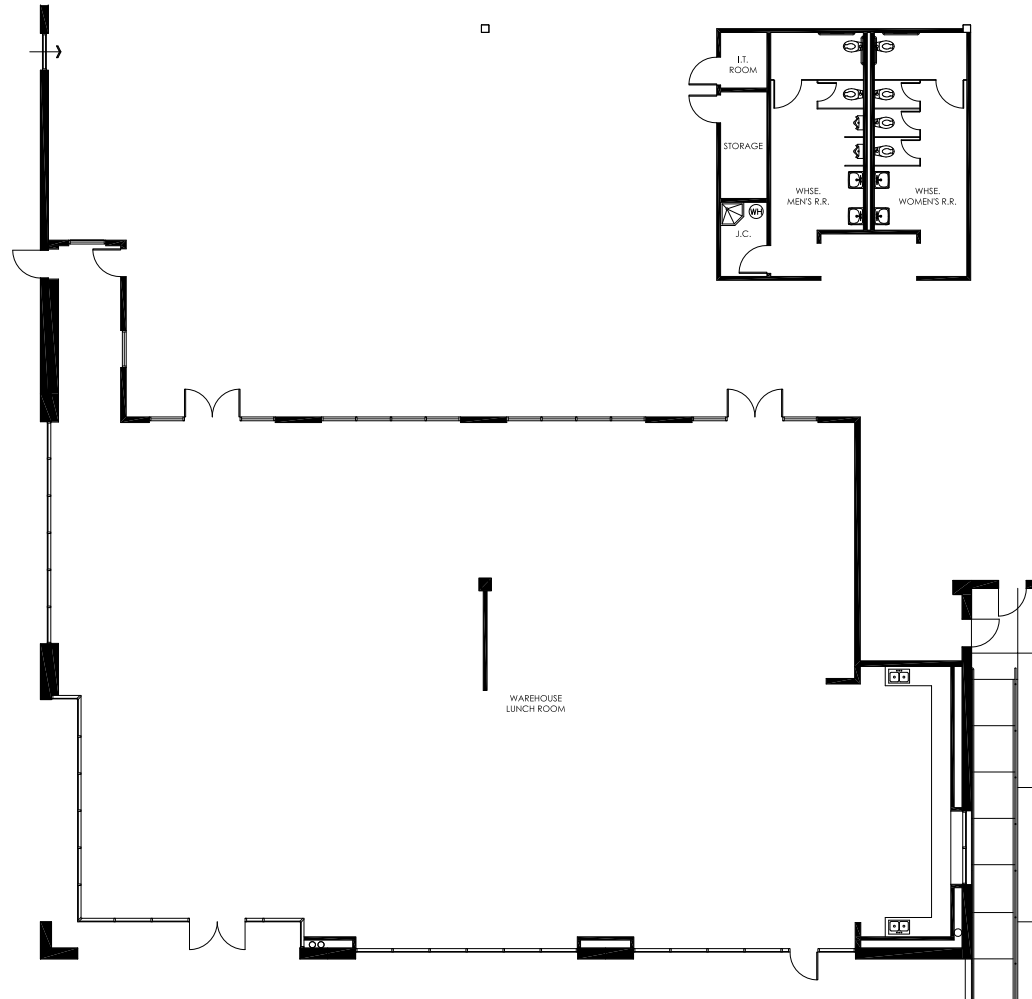
SE WAREHOUSE OFFICE/RESTROOM



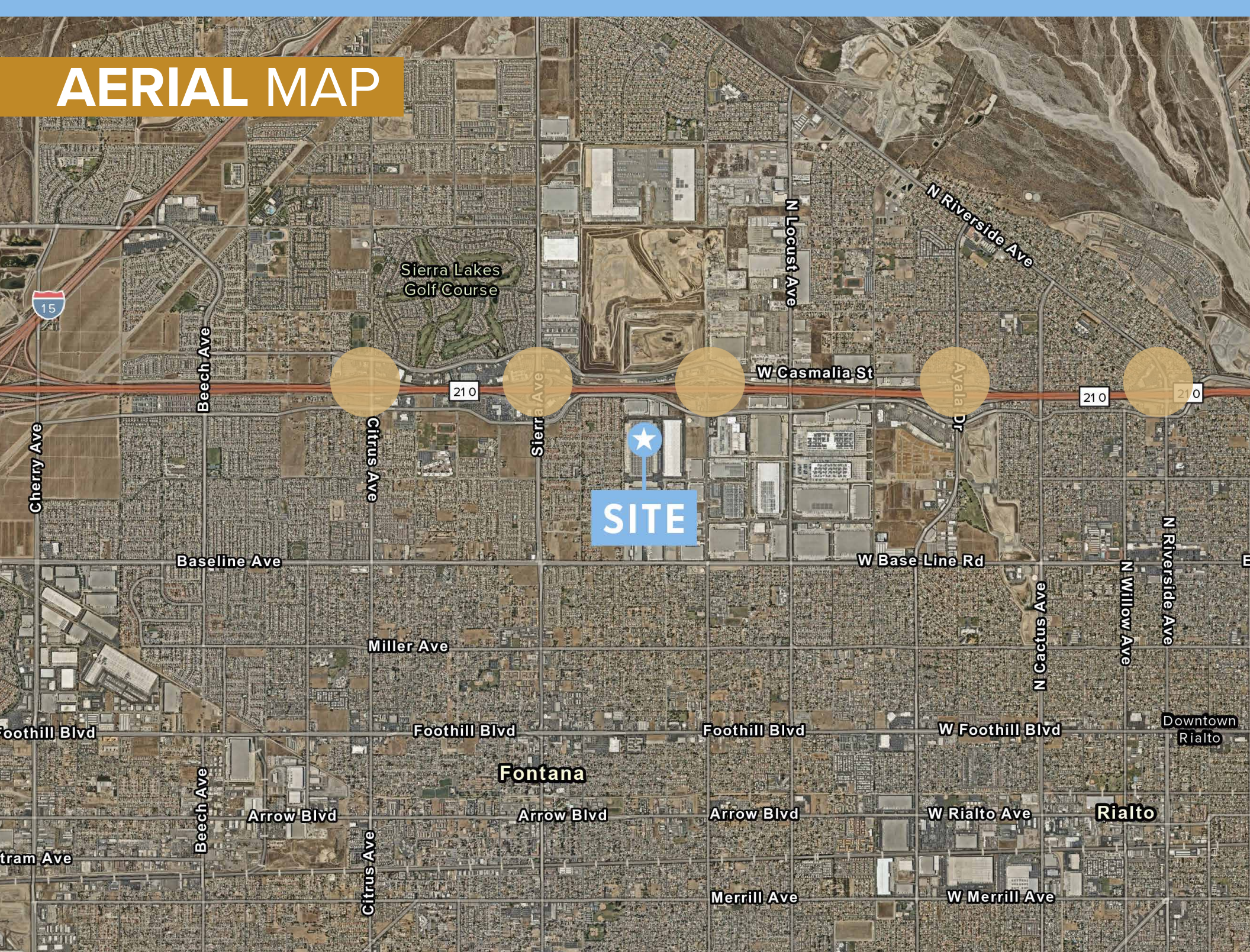
FLOOR PLANS

2510 - 2580 WEST WALNUT AVENUE
RIALTO, CA 92376

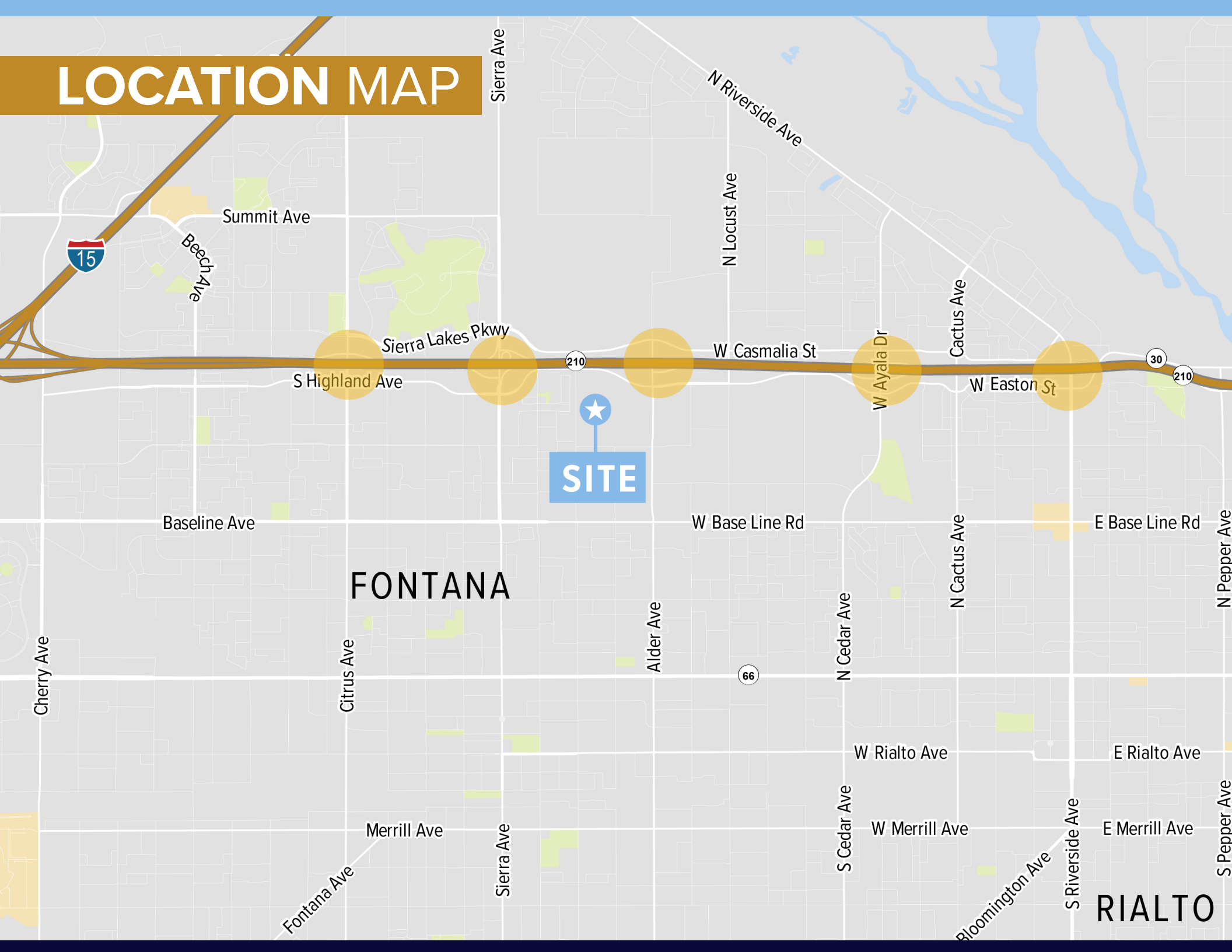
SOUTHWEST OFFICE



AERIAL MAP



LOCATION MAP



2510 - 2580 WEST WALNUT AVENUE

RIALTO, CA 92376



FOR MORE INFORMATION, CONTACT:

Phil Lombardo
909 942 4678
phil.lombardo@cushwake.com
Lic. No: 00892477

Andrew Starnes
909 942 4667
andrew.starnes@cushwake.com
Lic. No: 01799801

Cruise Adams
909 942 4641
cruise.adams@cushwake.com
Lic. No: 02075368



©2025 Cushman & Wakefield. All rights reserved. The information contained in this communication is strictly confidential. This information has been obtained from sources believed to be reliable but has not been verified. NO WARRANTY OR REPRESENTATION, EXPRESS OR IMPLIED, IS MADE AS TO THE CONDITION OF THE PROPERTY (OR PROPERTIES) REFERENCED HEREIN OR AS TO THE ACCURACY OR COMPLETENESS OF THE INFORMATION CONTAINED HEREIN, AND SAME IS SUBMITTED SUBJECT TO ERRORS, OMISSIONS, CHANGE OF PRICE, RENTAL OR OTHER CONDITIONS, WITHDRAWAL WITHOUT NOTICE, AND TO ANY SPECIAL LISTING CONDITIONS IMPOSED BY THE PROPERTY OWNER(S). ANY PROJECTIONS, OPINIONS OR ESTIMATES ARE SUBJECT TO UNCERTAINTY AND DO NOT SIGNIFY CURRENT OR FUTURE PROPERTY PERFORMANCE. COE-PM-WEST- 07/02/25