

10637

SCRIPPS SUMMIT

SAN DIEGO, CA 92131

For Sale
60,334 SF



**CUSHMAN &
WAKEFIELD**

// PROPERTY FEATURES



Building Size: 60,334 SF



Office Area: \pm 18,105 (30%)



Site Area: \pm 9.03 AC
(\pm 393,347 SF)



Clear Height: \pm 26' - 30'



Loading: 3 Dock High Doors; 11 Grade Level



Parking: 121 Spaces (2.0/1,000 SF)



Year Built: 1997



Zoning: IP-2-1



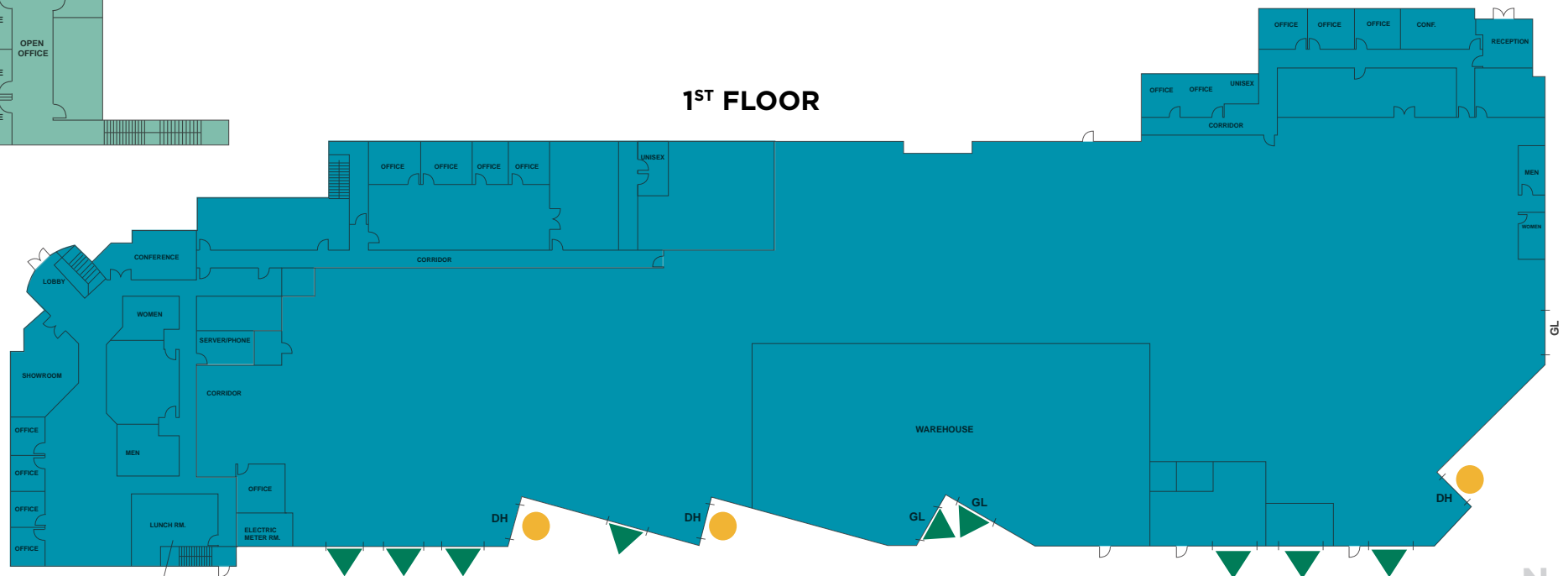
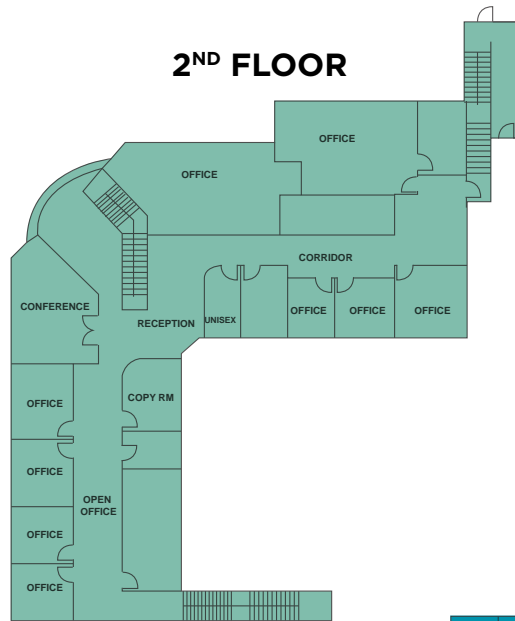
Power: 2,000a/270 - 480v 3p 4w Heavy



Purchase Price: Call Broker

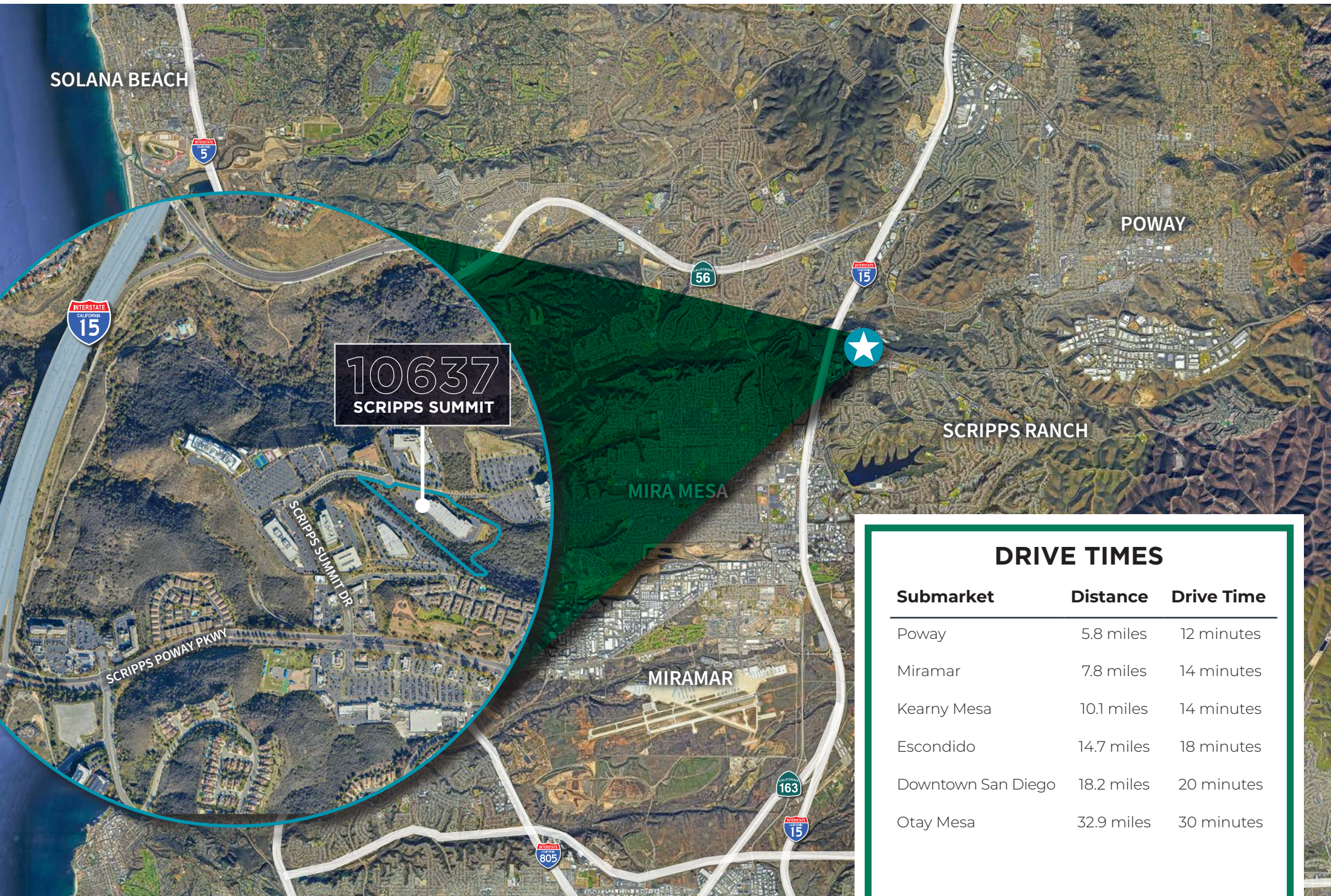


// FLOOR PLANS



● Dock High Doors ▲ Grade Level Doors

// LOCATION



DRIVE TIMES

Submarket	Distance	Drive Time
Poway	5.8 miles	12 minutes
Miramar	7.8 miles	14 minutes
Kearny Mesa	10.1 miles	14 minutes
Escondido	14.7 miles	18 minutes
Downtown San Diego	18.2 miles	20 minutes
Otay Mesa	32.9 miles	30 minutes

// CORPORATE NEIGHBORS



 **GENERAL ATOMICS**

 **labcorp**

Fcete
THERAPEUTICS

 **DEEP
seas**

 **TrellisWare**
TECHNOLOGIES

10637
SCRIPPS SUMMIT

SCRIPPS POWAY PKWY

Sysco™

 **Chef Works**®

amazon

GEICO

 **GENERAL ATOMICS**

 **BEST
BUY**

10637

SCRIPPS SUMMIT

SAN DIEGO, CA 92131

CONTACT

BRANT ABERG, SIOR

VICE CHAIR

858 546 5462

BRANT.ABERG@CUSHWAKE.COM

CA LICENSE 01773573

BARRY HENDLER

PRINCIPAL

760 448 2438

BHENDLER@LEE-ASSOCIATES.COM

CA LICENSE 01008239



©Cushman & Wakefield. All rights reserved. The information contained in this communication is strictly confidential. This information has been obtained from sources believed to be reliable but has not been verified. NO WARRANTY OR REPRESENTATION, EXPRESS OR IMPLIED, IS MADE AS TO THE CONDITION OF THE PROPERTY (OR PROPERTIES) REFERENCED HEREIN OR AS TO THE ACCURACY OR COMPLETENESS OF THE INFORMATION CONTAINED HEREIN, AND SAME IS SUBMITTED SUBJECT TO ERRORS, OMISSIONS, CHANGE OF PRICE, RENTAL OR OTHER CONDITIONS, WITHDRAWAL WITHOUT NOTICE, AND TO ANY SPECIAL LISTING CONDITIONS IMPOSED BY THE PROPERTY OWNER(S). ANY PROJECTIONS, OPINIONS OR ESTIMATES ARE SUBJECT TO UNCERTAINTY AND DO NOT SIGNIFY CURRENT OR FUTURE PROPERTY PERFORMANCE.