

# 3266 GREY HAWK COURT

Condo T, Carlsbad, CA

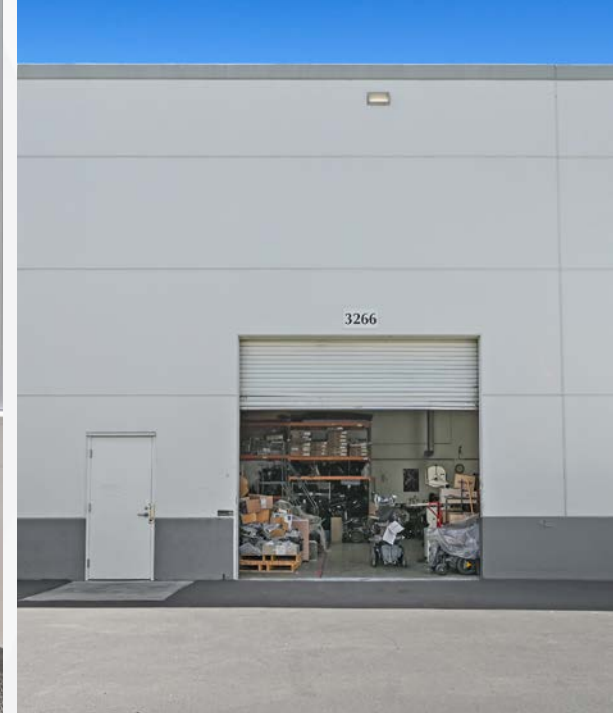


**FOR SALE**  
**INDUSTRIAL CONDO**

**7,058 RSF**



# PROPERTY HIGHLIGHTS



## GREY HAWK BUSINESS CENTER



±7,058 Square Foot  
Industrial Condo



Clear Height: 20'+



12'X12' Grade Level Roll-Up  
Loading Door



Parking Ratio  
3.0 / 1,000 SF



Fully Sprinklered



Zoning: P-M



Located in Highly Desirable  
Bressi Ranch Carlsbad  
Submarket



Built in 2006



Power: 3-Phase, 400 Amps



Sale Price:  
Call Broker For Details

\*Power specs to be independently verified

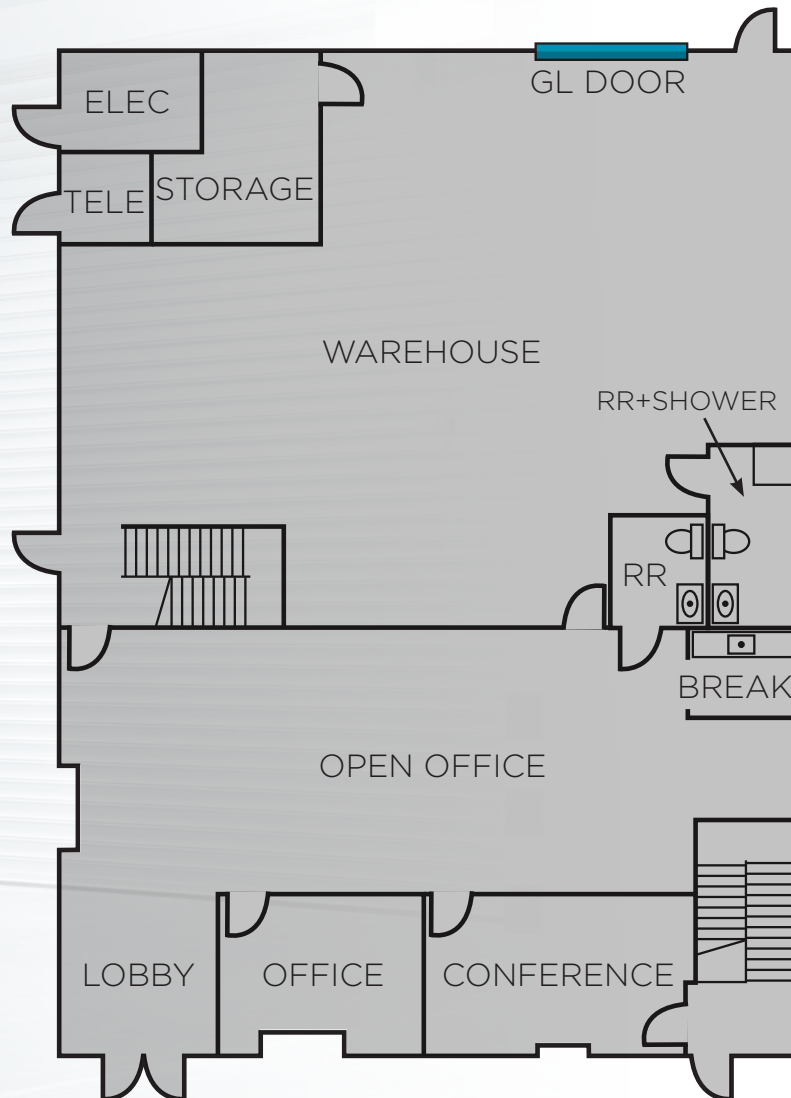
**3266 GREY HAWK COURT, CONDO T, CARLSBAD, CA**

# SITE PLAN



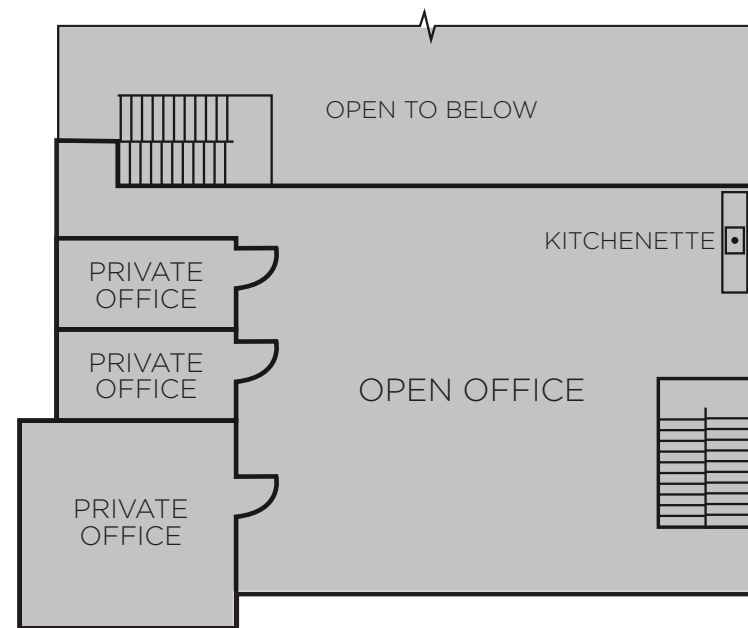
# FLOOR PLAN

## First Floor



7,058 SF

## Second Floor



# PHOTOS



# LOCATION



3266 GREY HAWK COURT, CONDO T, CARLSBAD, CA

# DRIVE TIMES & CORPORATE NEIGHBORS



3266 GREY HAWK COURT. CONDO T //// CARLSBAD

FOR SALE



**FOR MORE  
INFORMATION  
CONTACT BROKER:**

**TYLER STEMLEY**

760.908.4270

[tyler.stemley@cushwake.com](mailto:tyler.stemley@cushwake.com)

Lic. No.02003867

©2025 Cushman & Wakefield. All rights reserved. The information contained in this communication is strictly confidential. This information has been obtained from sources believed to be reliable but has not been verified. NO WARRANTY OR REPRESENTATION, EXPRESS OR IMPLIED, IS MADE AS TO THE CONDITION OF THE PROPERTY (OR PROPERTIES) REFERENCED HEREIN OR AS TO THE ACCURACY OR COMPLETENESS OF THE INFORMATION CONTAINED HEREIN, AND SAME IS SUBMITTED SUBJECT TO ERRORS, OMISSIONS, CHANGE OF PRICE, RENTAL OR OTHER CONDITIONS, WITHDRAWAL WITHOUT NOTICE, AND TO ANY SPECIAL LISTING CONDITIONS IMPOSED BY THE PROPERTY OWNER(S). ANY PROJECTIONS, OPINIONS OR ESTIMATES ARE SUBJECT TO UNCERTAINTY AND DO NOT SIGNIFY CURRENT OR FUTURE PROPERTY PERFORMANCE.

