

7157 HONEYMAN STREET

DELTA, BC



// **FOR SALE** | **UNITS 20, 21, 22**

- 9,092 SF of contiguous industrial space
- Corner units with good exposure and grade loading

// FEATURES



THREE GRADE LEVEL LOADING DOORS



SPRINKLERS



18' CEILING HEIGHT



3-PHASE ELECTRICAL SERVICE



THREE WASHROOMS



ZONING: I-2 HEAVY INDUSTRIAL



AVAILABLE FOR VACANT POSSESSION

// **ASKING PRICE:**
\$4,500,000

OPPORTUNITY

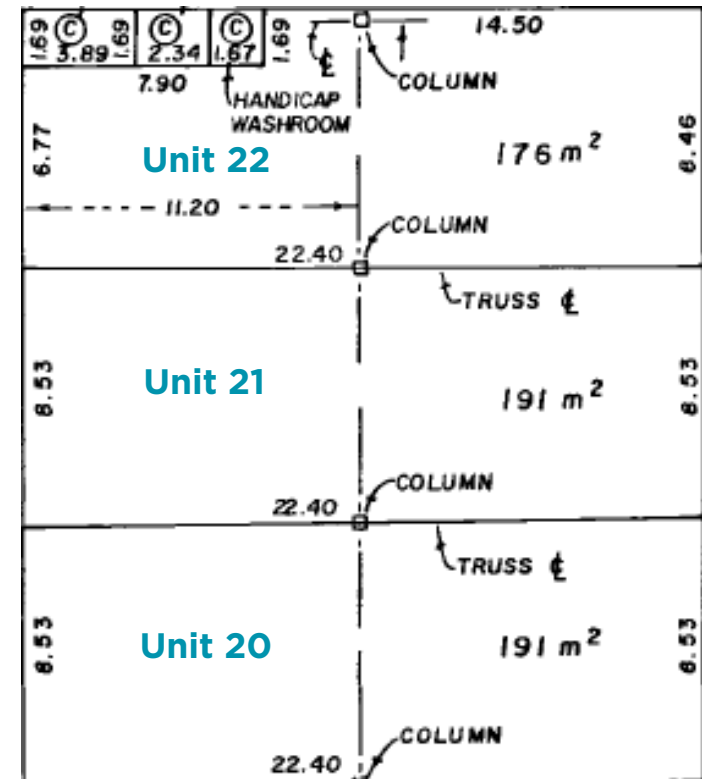
To purchase three contiguous industrial strata units totaling 9,092 SF located in the Tilbury industrial park. These corner units provide exposure to Honeyman Street and have lots of natural light. The complex has a large loading court and ample parking.

BUILDING AREA: UNITS 20, 21, 22

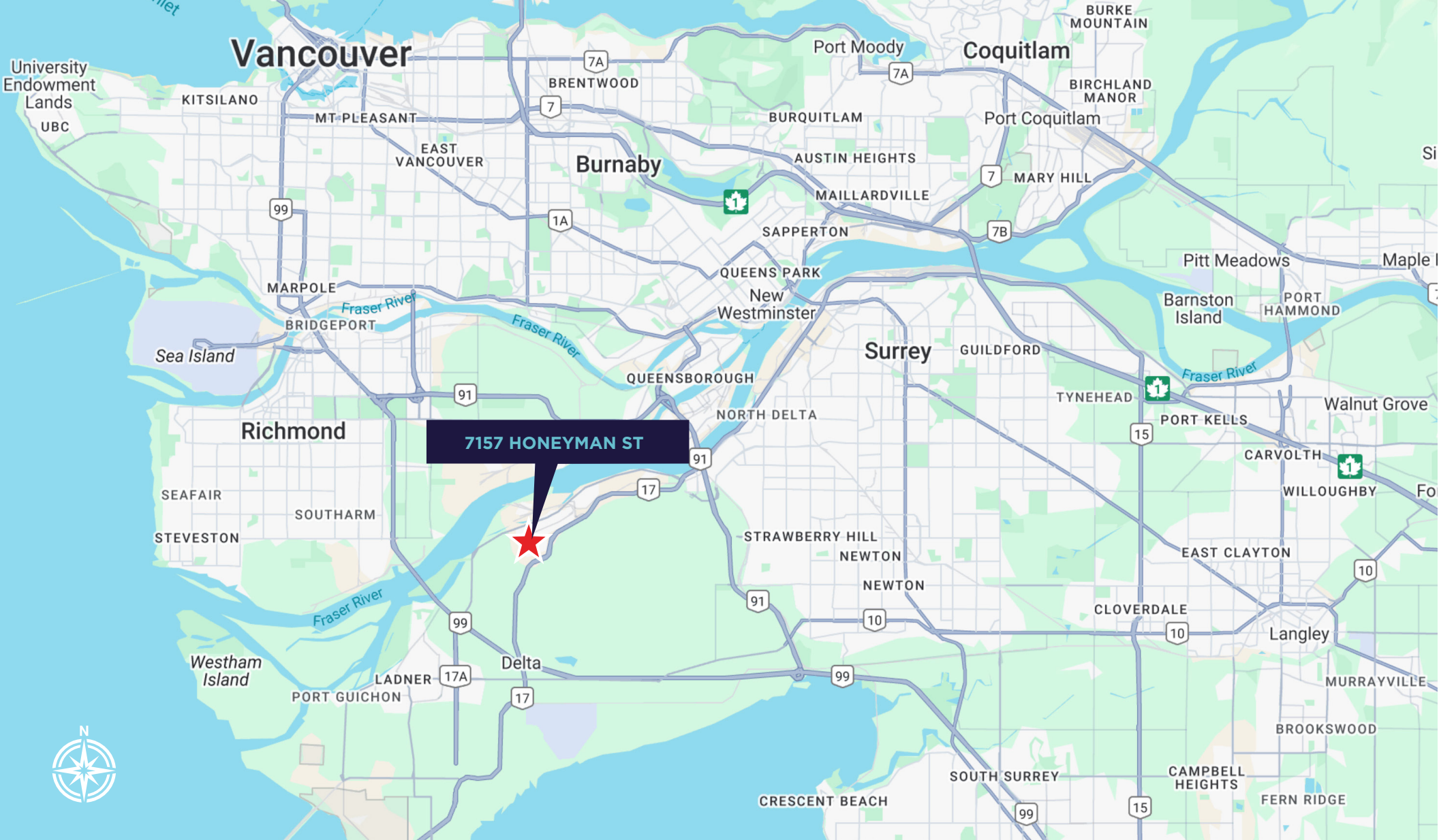
Ground Floor	6,006 SF
--------------	----------

Mezzanine	3,086 SF
-----------	----------

Total	9,092 SF
-------	----------



// **7157 HONEYMAN STREET**
DELTA, BC



JEFFREY SCHATZ

Associate Vice President

+1 604-608-5968

jeff.schatz@cushwake.com

CUSHMAN & WAKEFIELD

700 West Georgia Street, Suite 1200

Vancouver, BC V7Y 1A1

cushmanwakfield.com



**CUSHMAN &
WAKEFIELD**

©2025 Cushman & Wakefield. All rights reserved. The information contained in this communication is strictly confidential. This information has been obtained from sources believed to be reliable but has not been verified. NO WARRANTY OR REPRESENTATION, EXPRESS OR IMPLIED, IS MADE AS TO THE CONDITION OF THE PROPERTY (OR PROPERTIES) REFERENCED HEREIN OR AS TO THE ACCURACY OR COMPLETENESS OF THE INFORMATION CONTAINED HEREIN, AND SAME IS SUBMITTED SUBJECT TO ERRORS, OMISSIONS, CHANGE OF PRICE, RENTAL OR OTHER CONDITIONS, WITHDRAWAL WITHOUT NOTICE, AND TO ANY SPECIAL LISTING CONDITIONS IMPOSED BY THE PROPERTY OWNER(S). ANY PROJECTIONS, OPINIONS OR ESTIMATES ARE SUBJECT TO UNCERTAINTY AND DO NOT SIGNIFY CURRENT OR FUTURE PROPERTY PERFORMANCE.