

OFFICE SPACE FOR LEASE

±7,899 RSF AVAILABLE

1200 R STREET SACRAMENTO, CA

KEVIN PARTINGTON

Executive Managing Director

+1 916 288 4807

CA LIC #01199010

kevin.partington@cushwake.com

JESSI MULJAT

Senior Associate

+1 916 403 1805

CA LIC #02191822

jessi.muljat@cushwake.com



PROPERTY HIGHLIGHTS



Impeccable Tenant Improvements with Open Ceiling Design



Within Walking Distance to the Capitol, DOCO, and Golden 1 Center



Abundant Parking



Excellent Location in the R Street Corridor, one of Sacramento's Most Popular Neighborhoods

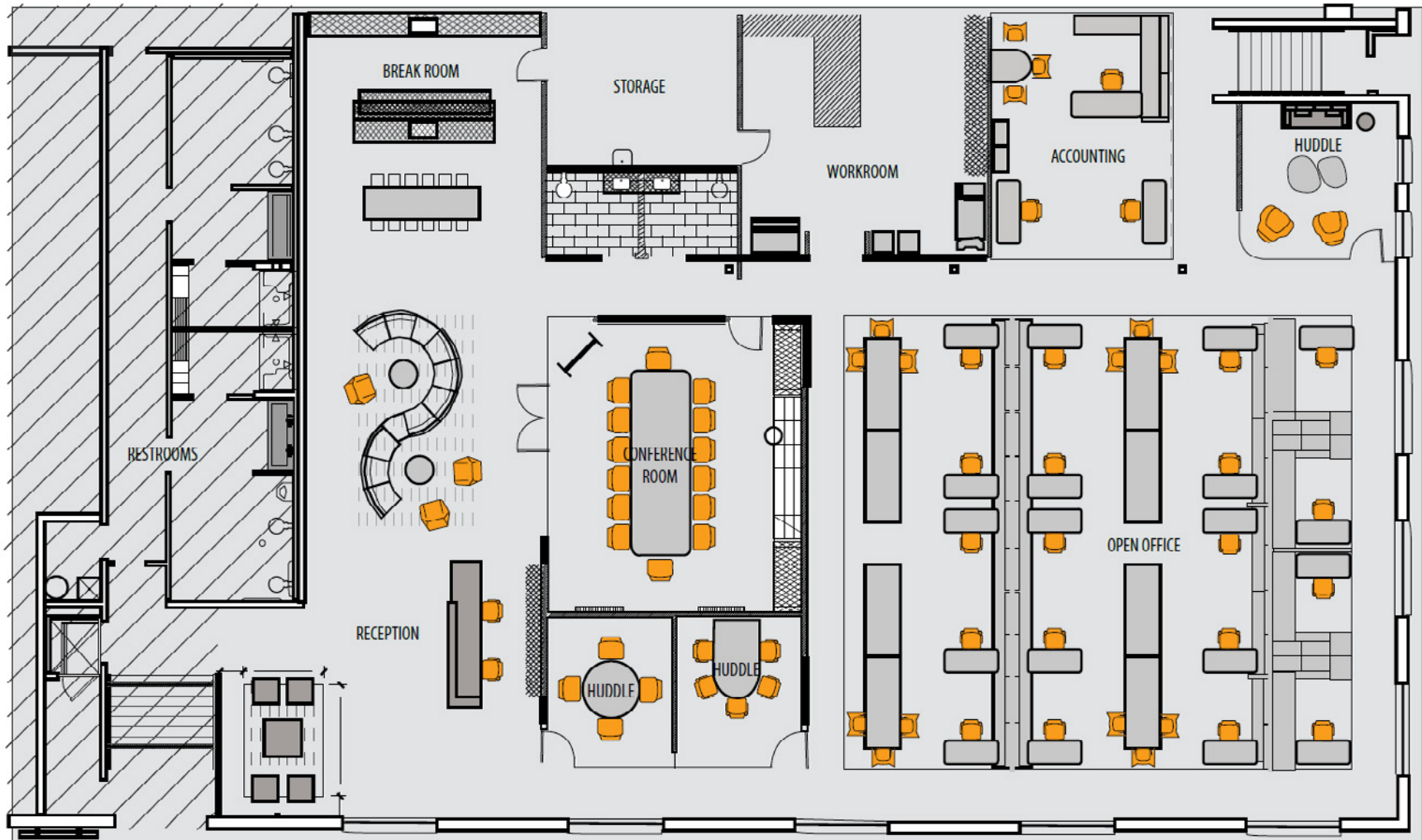


Nearby Tenants include Trendy Restaurants, Bars, and Entertainment Venues

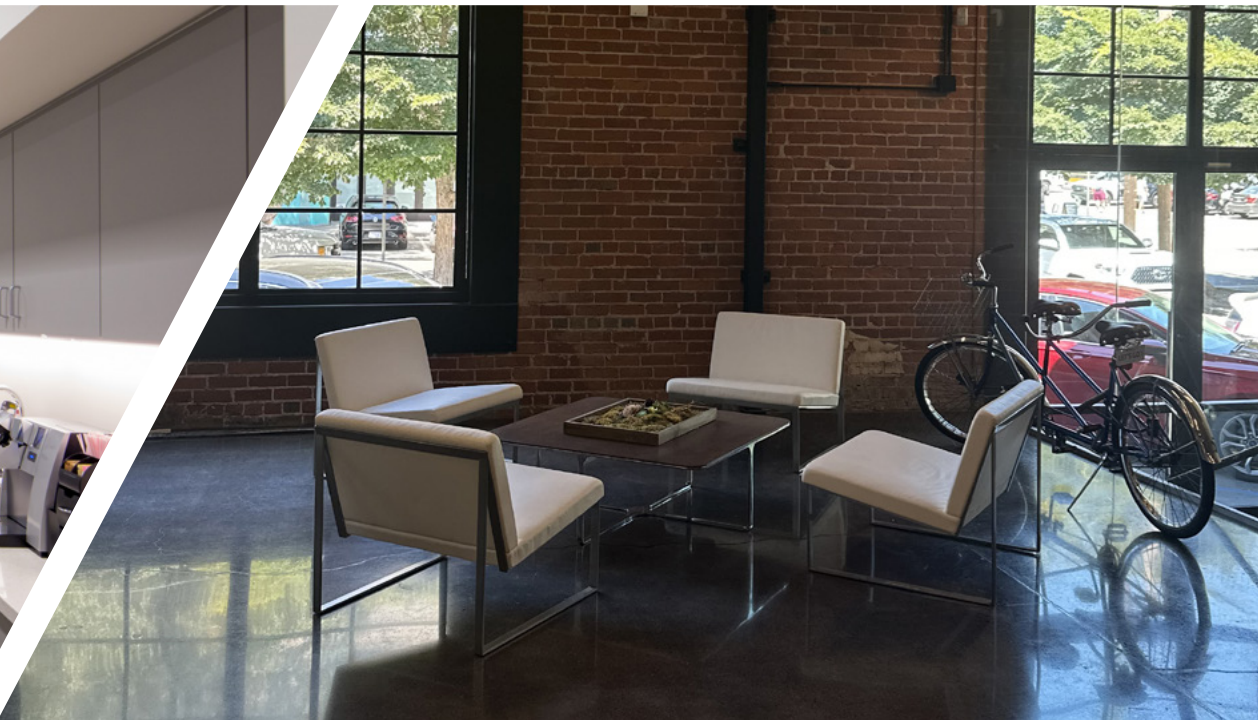
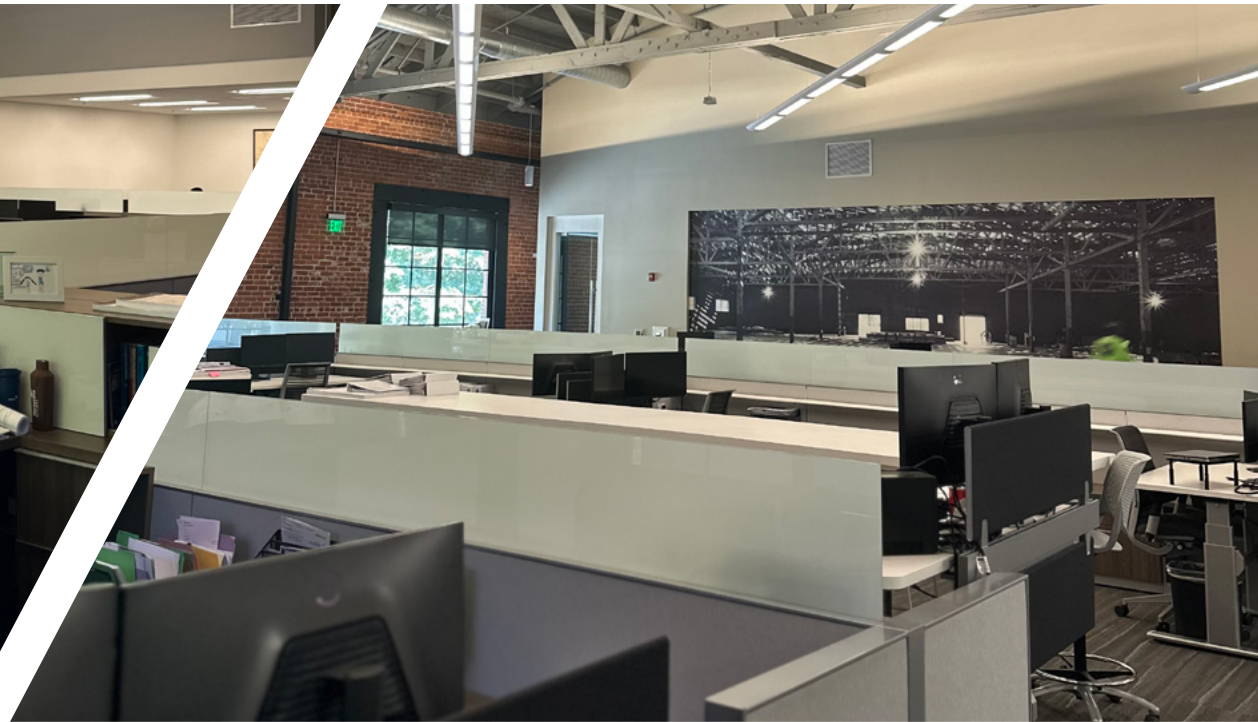


Near all major Sacramento freeways

FLOOR PLAN



SUITE 150 | ±7,899 RSF





AMENITIES MAP



CONTACT

KEVIN PARTINGTON

Executive Managing Director

+1 916 288 4807

kevin.partington@cushwake.com

CA LIC #01199010

JESSI MULJAT

Senior Associate

+1 916 403 1805

jessi.muljat@cushwake.com

CA LIC #02191822

CUSHMAN & WAKEFIELD

400 Capitol Mall, Suite 1800

Sacramento, CA 95814

+1 916 288 4800



©2025 Cushman & Wakefield. All rights reserved. The information contained in this communication is strictly confidential. This information has been obtained from sources believed to be reliable but has not been verified. NO WARRANTY OR REPRESENTATION, EXPRESS OR IMPLIED, IS MADE AS TO THE CONDITION OF THE PROPERTY (OR PROPERTIES) REFERENCED HEREIN OR AS TO THE ACCURACY OR COMPLETENESS OF THE INFORMATION CONTAINED HEREIN, AND SAME IS SUBMITTED SUBJECT TO ERRORS, OMISSIONS, CHANGE OF PRICE, RENTAL OR OTHER CONDITIONS, WITHDRAWAL WITHOUT NOTICE, AND TO ANY SPECIAL LISTING CONDITIONS IMPOSED BY THE PROPERTY OWNER(S). ANY PROJECTIONS, OPINIONS OR ESTIMATES ARE SUBJECT TO UNCERTAINTY AND DO NOT SIGNIFY CURRENT OR FUTURE PROPERTY PERFORMANCE.



**CUSHMAN &
WAKEFIELD**