

2520

Lapierre, Lasalle, Quebec

4000 pi. ca. | sq. ft.



CUSHMAN &
WAKEFIELD

FAITS SAILLANTS | PROPERTY HIGHLIGHTS

Superficie du bâtiment |
Square Footage

4000 sq. ft. | pi. ca.

Superficie totale de 4000 pi. | sq. total area

± 3100 pi. d'espace bureau sur deux étages | sf office space on two floors

Espace d'entrepôt de 900 pi. | sf warehouse space

Taux Brut |
Net Rent

\$16.00 |

pi. ca. | sq. ft.

Hauteur Libre |
Clear Height

20

Pieds | feet

Quais de
chargement |
Loading Docks

1

Pas de niveleur de quai mécanique
| no mechanical dock leveller

Entrée Electrique |
Electrical Entry

600 | 200

Volts | Amps



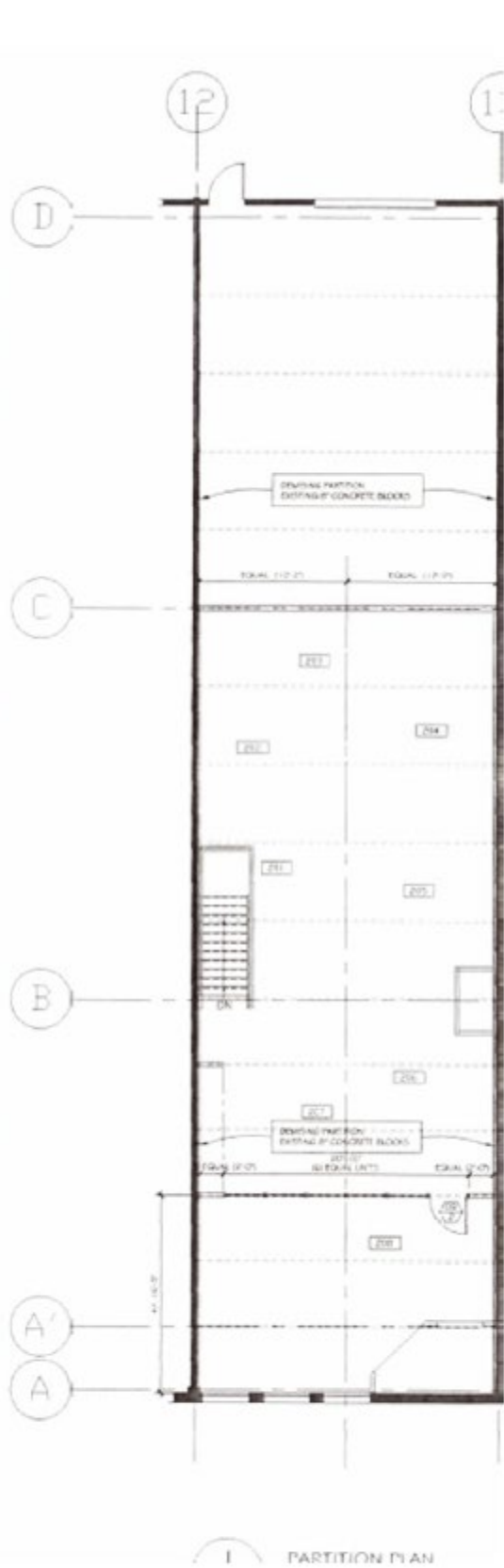
Espace industriel à louer dans l'arrondissement de Lasalle

Industrial space for Lease in the borough of Lasalle

PLAN D'ÉTAGE | FLOORPLAN

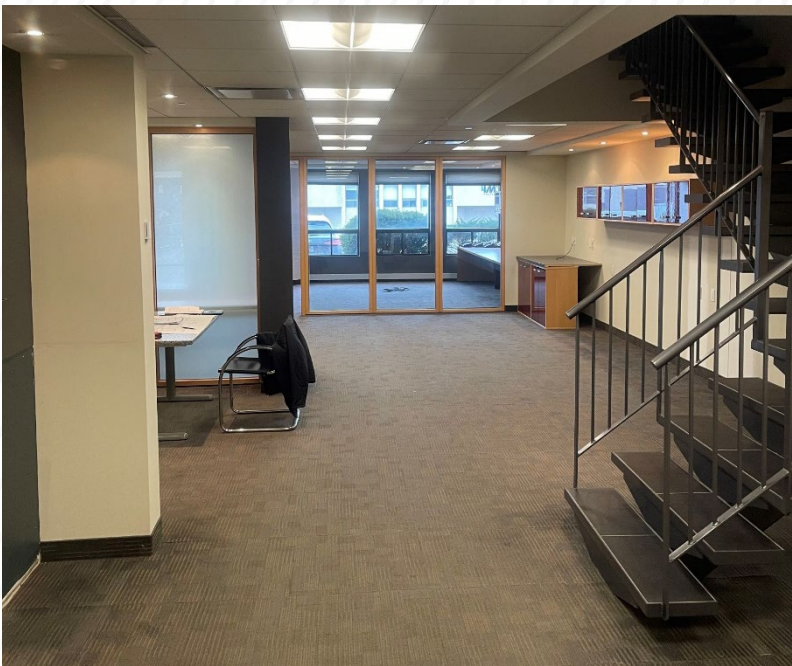
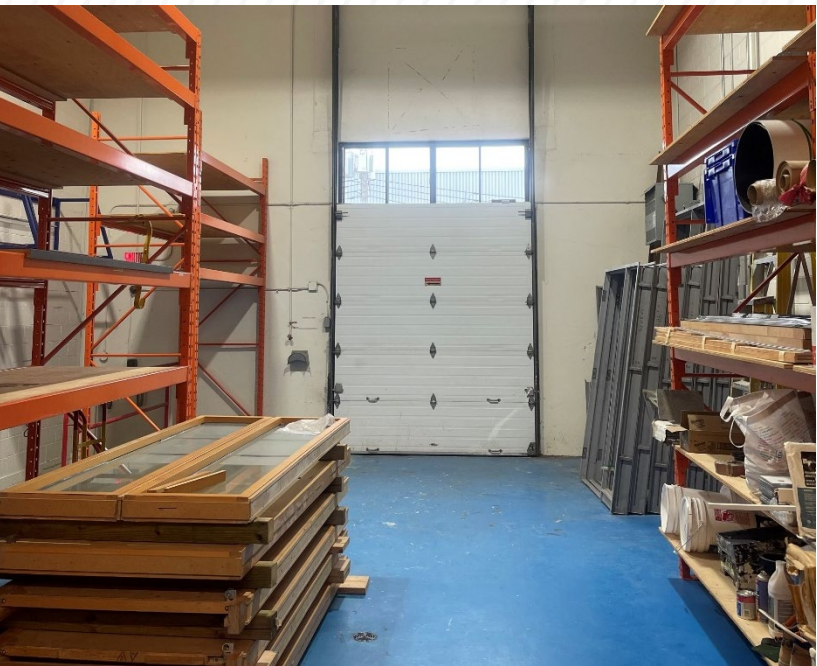


Ground Floor



Mezzanine

PHOTOS | PHOTOS





CONTACT



TREVOR ONESI

Associate Vice-President | Vice-Président
Associé

+1 514 747 2893

trevor.onesi@cushwake.com



**CUSHMAN &
WAKEFIELD**

Cushman & Wakefield SRI | ULC

Agence immobilière | Real Estate Agency
999, boul. de Maisonneuve Ouest, bureau 1500
Montréal, QC H3A 3L4 | CANADA
www.cushmanwakefield.com

©2024 Cushman & Wakefield. All rights reserved. The material in this presentation has been prepared solely for information purposes, and is strictly confidential. Any disclosure, use, copying or circulation of this presentation (or the information contained within it) is strictly prohibited, unless you have obtained Cushman & Wakefield's prior written consent. The views expressed in this presentation are the views of the author and do not necessarily reflect the views of Cushman & Wakefield. Neither this presentation nor any part of it shall form the basis of, or be relied upon in connection with any offer, or act as an inducement to enter into any contract or commitment whatsoever. NO REPRESENTATION OR WARRANTY IS GIVEN, EXPRESS OR IMPLIED, AS TO THE ACCURACY OF THE INFORMATION CONTAINED WITHIN THIS PRESENTATION, AND CUSHMAN & WAKEFIELD IS UNDER NO OBLIGATION TO SUBSEQUENTLY CORRECT IT IN THE EVENT OF ERRORS.