

FOR LEASE | INDUSTRIAL

# 26 FRENCH DR, UNIT B

MONO, ON



OUTSIDE STORAGE PERMITTED

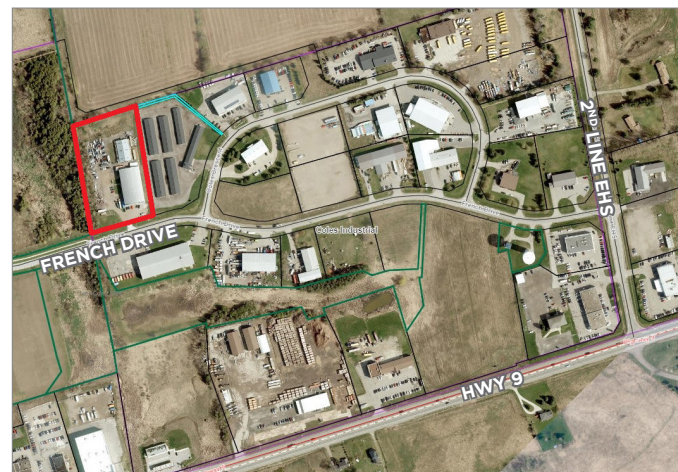
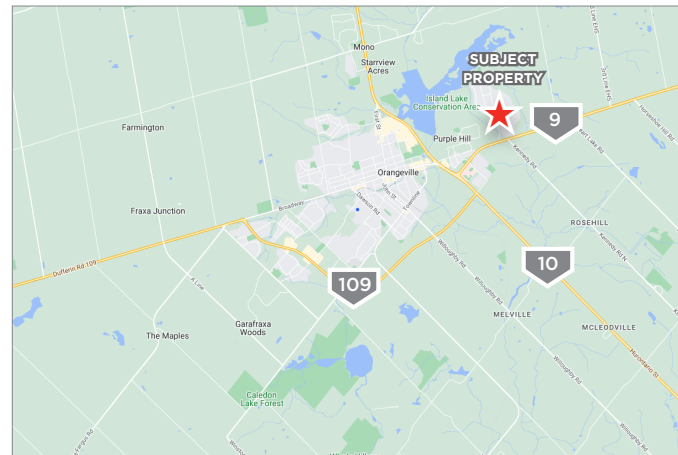
## PROPERTY DETAILS

<b>BUILDING / OFFICE:</b>	5,890 SF / 980 SF
<b>ZONING:</b>	CM - Commercial Light Industrial
<b>CLEAR HEIGHT:</b>	21' 6"
<b>LOADING DOORS:</b>	2 Dock Level (9' x 9') 1 Drive In (10' x 10')
<b>ELECTRICAL:</b>	600 Volts / 200 Amps

## OFFERING DETAILS

<b>LEASE RATE (BUILDING):</b>	\$14.95 PSF Net per Annum
<b>LEASE RATE (OUTDOOR STORAGE):</b>	\$6,000 Gross/acre per month
<b>ADDITIONAL RENT:</b>	\$4.75 PSF
<b>AVAILABILITY:</b>	Immediate

- Suitable for manufacturing, warehouse, large vehicle repair, contractor yard, equipment rentals
- Energy Efficiencies - in floor heating , upgraded insulation
- Rare small unit with dock and drive in loading.
- Clear span space
- Quick access to Hwy 10 & Hwy 9



## CONTACT INFORMATION

**WALTER SPOJA\***  
Associate Vice President  
905 501 6469  
walter.spoja@cushwake.com

**JOSH BAIRD\***  
Associate  
905 501 6419  
josh.baird@cushwake.com

**CUSHMAN & WAKEFIELD ULC, BROKERAGE**  
1 Prologis Blvd., Suite 300  
Mississauga, Ontario L5W 0G2  
905 568 9500  
[cushmanwakefield.com](http://cushmanwakefield.com)

©2025 Cushman & Wakefield. All rights reserved. The information contained in this communication is strictly confidential. This information has been obtained from sources believed to be reliable but has not been verified. No warranty or representation, express or implied, is made as to the condition of the property (or properties) referenced herein or as to the accuracy or completeness of the information contained herein, and same is submitted subject to errors, omissions, change of price, rental or other conditions, withdrawal without notice, and to any special listing conditions imposed by the property owner(s). Any projections, opinions or estimates are subject to uncertainty and do not signify current or future property performance. \*Sales Representative

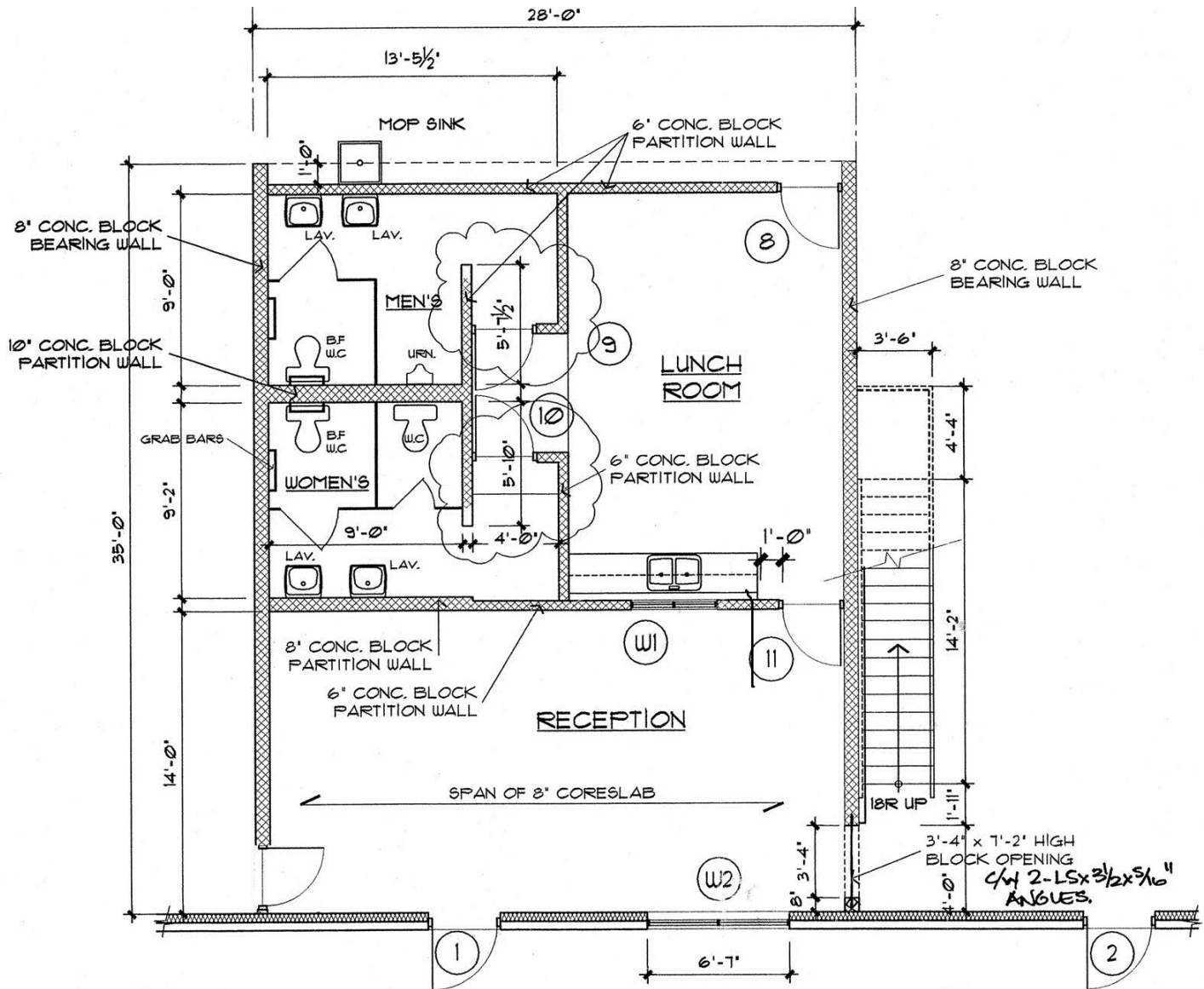
FOR LEASE | INDUSTRIAL

# 26 FRENCH DR, UNIT B

MONO, ON



## GROUND FLOOR OFFICE PLAN



## GROUND FLOOR OFFICE PLAN

SCALE: 3/16" = 1'-0"

### CONTACT INFORMATION

WALTER SPOJA\*

Associate Vice President

905 501 6469

walter.spoja@cushwake.com

JOSH BAIRD\*

Associate

905 501 6419

josh.baird@cushwake.com

CUSHMAN & WAKEFIELD ULC, BROKERAGE

1 Prologis Blvd., Suite 300

Mississauga, Ontario L5W 0G2

905 568 9500

cushmanwakefield.com

©2025 Cushman & Wakefield. All rights reserved. The information contained in this communication is strictly confidential. This information has been obtained from sources believed to be reliable but has not been verified. No warranty or representation, express or implied, is made as to the condition of the property (or properties) referenced herein or as to the accuracy or completeness of the information contained herein, and same is submitted subject to errors, omissions, change of price, rental or other conditions, withdrawal without notice, and to any special listing conditions imposed by the property owner(s). Any projections, opinions or estimates are subject to uncertainty and do not signify current or future property performance. \*Sales Representative

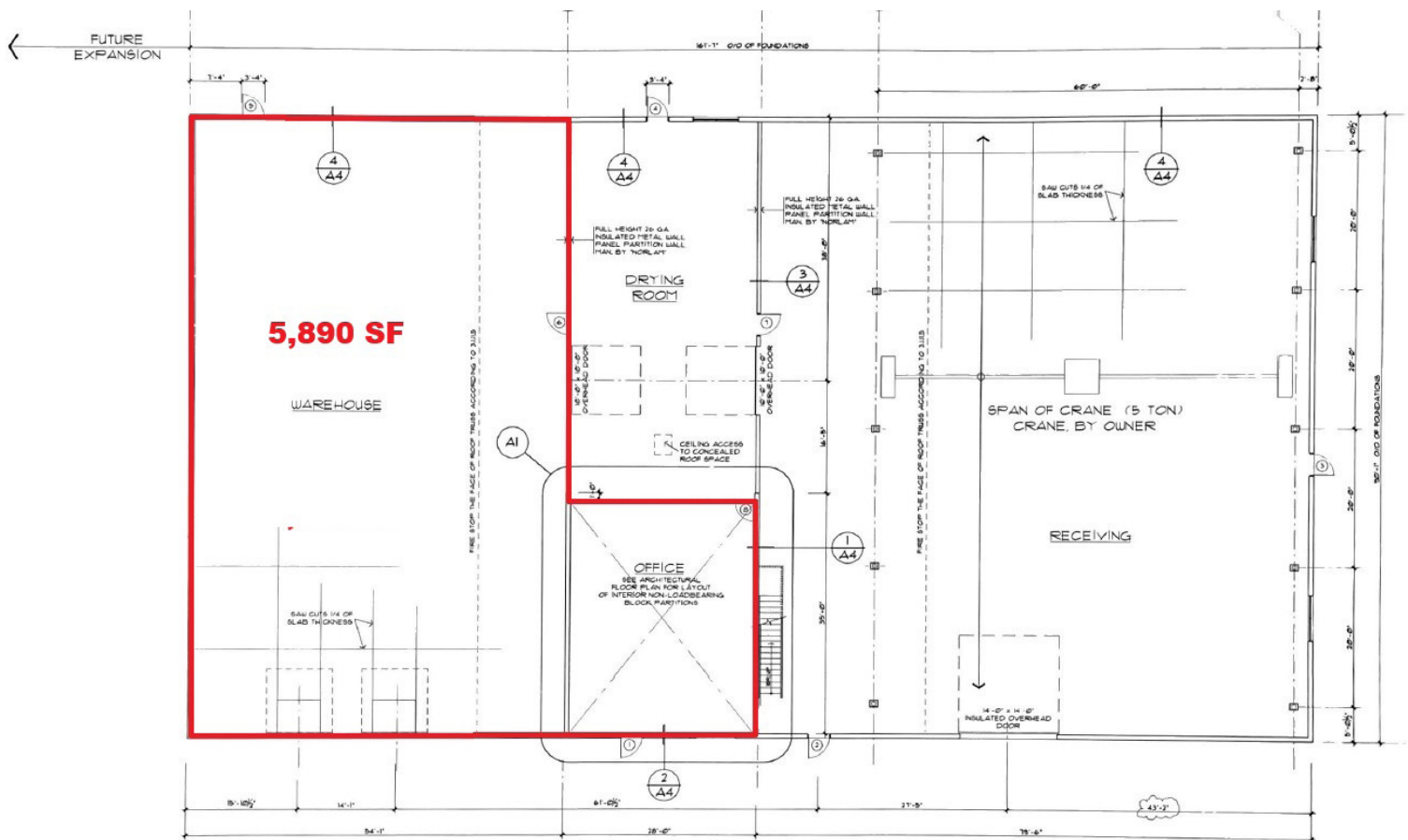
FOR LEASE | INDUSTRIAL

# 26 FRENCH DR, UNIT B

MONO, ON



## UNIT B - FLOORPLAN



### CONTACT INFORMATION

**WALTER SPOJA\***

Associate Vice President

905 501 6469

walter.spoja@cushwake.com

**JOSH BAIRD\***

Associate

905 501 6419

josh.baird@cushwake.com

**CUSHMAN & WAKEFIELD ULC, BROKERAGE**

1 Prologis Blvd., Suite 300

Mississauga, Ontario L5W 0G2

905 568 9500

[cushmanwakefield.com](http://cushmanwakefield.com)

©2025 Cushman & Wakefield. All rights reserved. The information contained in this communication is strictly confidential. This information has been obtained from sources believed to be reliable but has not been verified. No warranty or representation, express or implied, is made as to the condition of the property (or properties) referenced herein or as to the accuracy or completeness of the information contained herein, and same is submitted subject to errors, omissions, change of price, rental or other conditions, withdrawal without notice, and to any special listing conditions imposed by the property owner(s). Any projections, opinions or estimates are subject to uncertainty and do not signify current or future property performance. \*Sales Representative



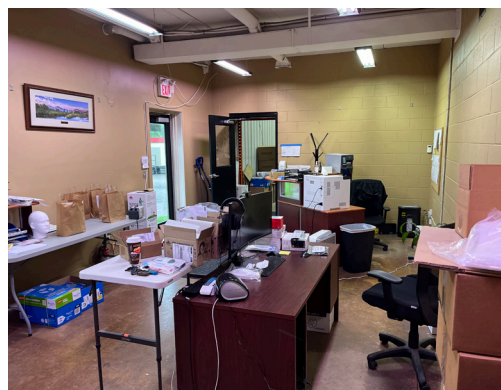
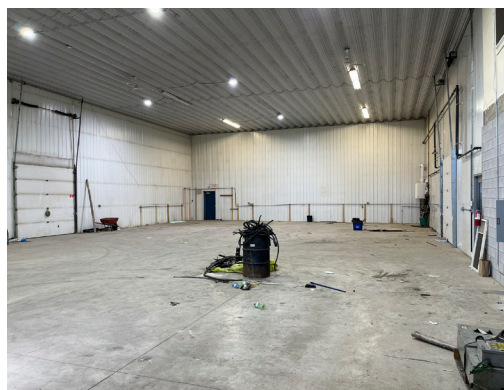
FOR LEASE | INDUSTRIAL

# 26 FRENCH DR, UNIT B

MONO, ON



## IMAGE GALLERY



## CONTACT INFORMATION

**WALTER SPOJA\***

*Associate Vice President*

905 501 6469

walter.spoja@cushwake.com

**JOSH BAIRD\***

*Associate*

905 501 6419

josh.baird@cushwake.com

**CUSHMAN & WAKEFIELD ULC, BROKERAGE**

*1 Prologis Blvd., Suite 300*

*Mississauga, Ontario L5W 0G2*

*905 568 9500*

**cushmanwakefield.com**

©2025 Cushman & Wakefield. All rights reserved. The information contained in this communication is strictly confidential. This information has been obtained from sources believed to be reliable but has not been verified. No warranty or representation, express or implied, is made as to the condition of the property (or properties) referenced herein or as to the accuracy or completeness of the information contained herein, and same is submitted subject to errors, omissions, change of price, rental or other conditions, withdrawal without notice, and to any special listing conditions imposed by the property owner(s). Any projections, opinions or estimates are subject to uncertainty and do not signify current or future property performance. \*Sales Representative



FOR LEASE | INDUSTRIAL

# 26 FRENCH DR, UNIT B

MONO, ON



## ZONING

### COMMERCIAL-LIGHT INDUSTRIAL ZONE (CM):

#### PERMITTED USES

No person shall within any CM Zone use any lot or erect, alter or use any building or structure for any purpose except one or more of the following CM uses, namely:

##### (a) RESIDENTIAL USES

- An accessory dwelling unit

##### (b) NON-RESIDENTIAL USES

- an auctioneer's establishment
- a banquet facility
- a building supply yard
- a business office
- a clinic
- a commercial garage
- a display area for nurseries, greenhouses and automobile sales establishments and open storage areas for building supply yards and automobile sales establishments
- an equipment rental business
- a farm produce outlet
- a farm supply dealer
- a financial institution
- a manufacturing or assembling plant
- a merchandise service shop
- a funeral home
- a motel or hotel
- a nursery or greenhouse
- a printing or publishing facility
- a private club
- a public use
- a recreational establishment
- a restaurant
- a retail store
- a retail outlet accessory to a permitted CM use
- a variety or convenience store
- a warehouse
- a wholesale use accessory to a permitted CM use



## CONTACT INFORMATION

**WALTER SPOJA\***

*Associate Vice President*

905 501 6469

walter.spoja@cushwake.com

**JOSH BAIRD\***

*Associate*

905 501 6419

josh.baird@cushwake.com

**CUSHMAN & WAKEFIELD ULC, BROKERAGE**

*1 Prologis Blvd., Suite 300*

*Mississauga, Ontario L5W 0G2*

905 568 9500

**cushmanwakefield.com**

©2025 Cushman & Wakefield. All rights reserved. The information contained in this communication is strictly confidential. This information has been obtained from sources believed to be reliable but has not been verified. No warranty or representation, express or implied, is made as to the condition of the property (or properties) referenced herein or as to the accuracy or completeness of the information contained herein, and same is submitted subject to errors, omissions, change of price, rental or other conditions, withdrawal without notice, and to any special listing conditions imposed by the property owner(s). Any projections, opinions or estimates are subject to uncertainty and do not signify current or future property performance. \*Sales Representative



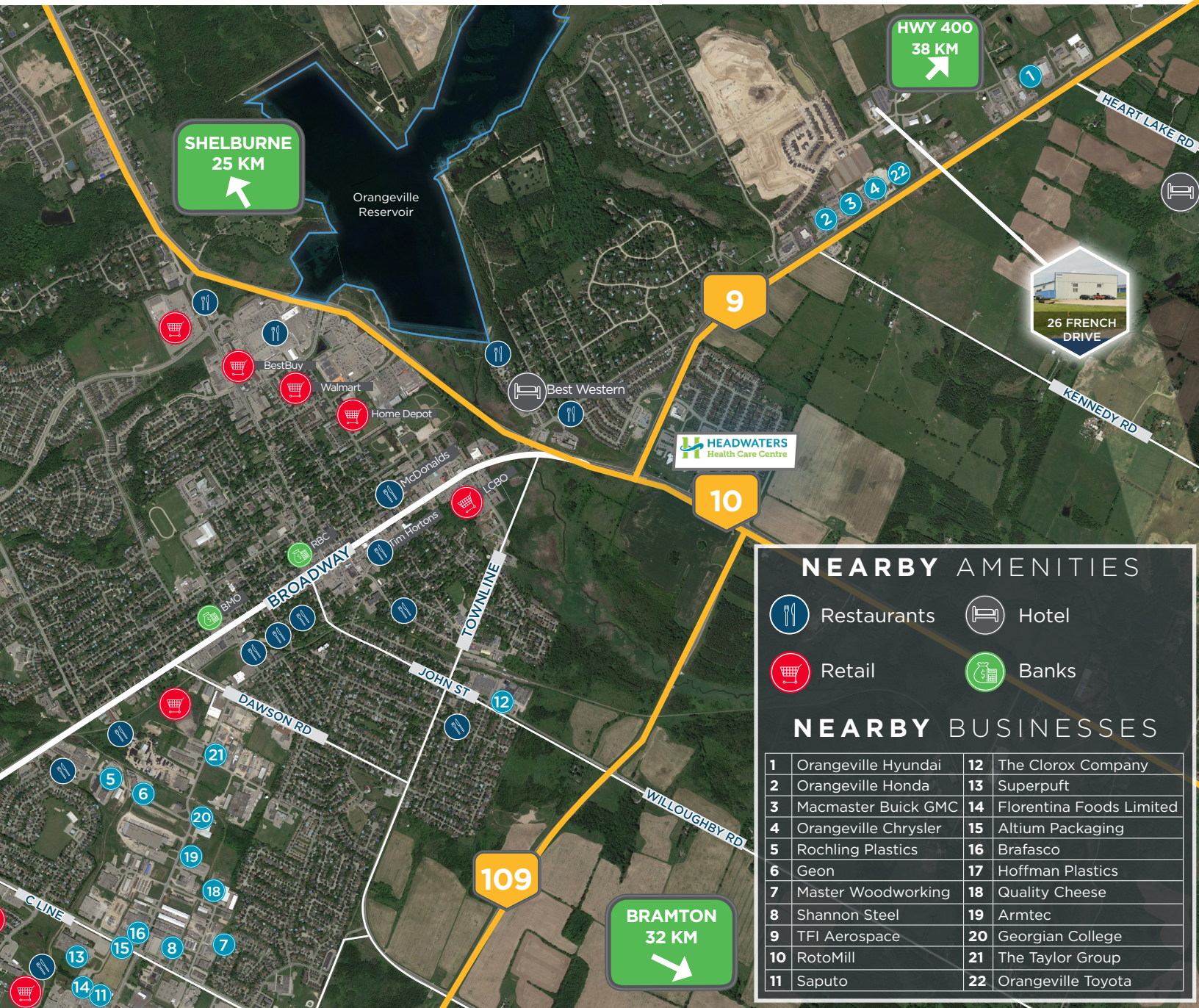
FOR LEASE | INDUSTRIAL

# 26 FRENCH DR, UNIT B

MONO, ON



## AMENITIES & TRANSIT MAP



### NEARBY AMENITIES

- Restaurants
- Hotel
- Retail
- Banks

### NEARBY BUSINESSES

1	Orangeville Hyundai	12	The Clorox Company
2	Orangeville Honda	13	Superpuft
3	Macmaster Buick GMC	14	Florentina Foods Limited
4	Orangeville Chrysler	15	Altium Packaging
5	Rochling Plastics	16	Brafasco
6	Geon	17	Hoffman Plastics
7	Master Woodworking	18	Quality Cheese
8	Shannon Steel	19	Armtec
9	TFI Aerospace	20	Georgian College
10	RotoMill	21	The Taylor Group
11	Saputo	22	Orangeville Toyota

### CONTACT INFORMATION

**WALTER SPOJA\***

Associate Vice President

905 501 6469

walter.spoja@cushwake.com

**JOSH BAIRD\***

Associate

905 501 6419

josh.baird@cushwake.com

**CUSHMAN & WAKEFIELD ULC, BROKERAGE**

1 Prologis Blvd., Suite 300

Mississauga, Ontario L5W 0G2

905 568 9500

[cushmanwakefield.com](http://cushmanwakefield.com)

©2025 Cushman & Wakefield. All rights reserved. The information contained in this communication is strictly confidential. This information has been obtained from sources believed to be reliable but has not been verified. No warranty or representation, express or implied, is made as to the condition of the property (or properties) referenced herein or as to the accuracy or completeness of the information contained herein, and same is submitted subject to errors, omissions, change of price, rental or other conditions, withdrawal without notice, and to any special listing conditions imposed by the property owner(s). Any projections, opinions or estimates are subject to uncertainty and do not signify current or future property performance. \*Sales Representative



FOR LEASE | INDUSTRIAL

# 26 FRENCH DR, UNIT B

MONO, ON



## ACCESSIBILITY

### Driving Times



**63km / 45 min**  
to Toronto Pearson

**34km / 33 min**  
to Brampton

**63km / 45 min**  
to Vaughan

**80km / 55 min**  
to Barrie

**56km / 50 min**  
to Guelph

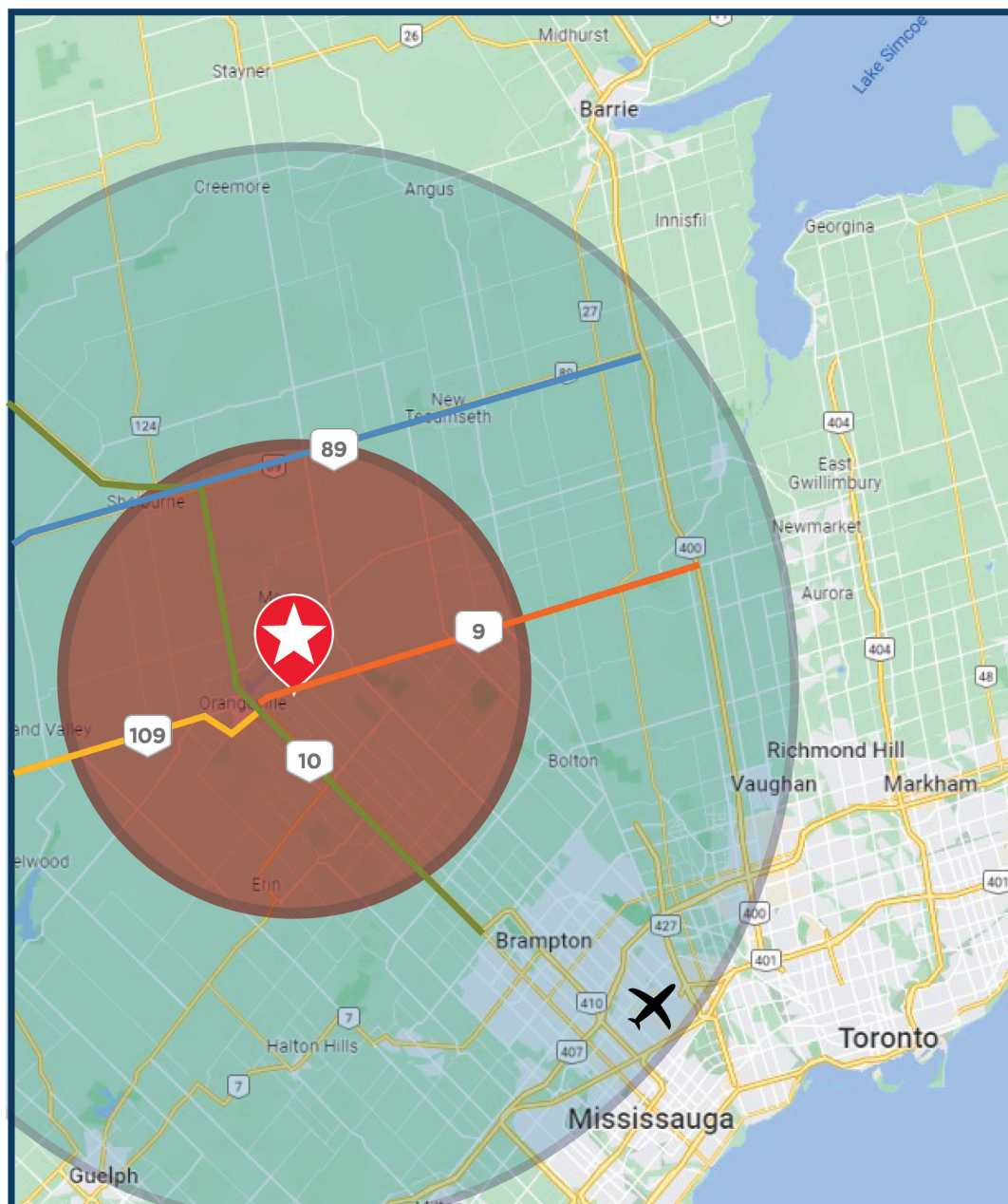
**78km / 65 min**  
to Kitchener



**20km Radius**



**50km Radius**



## CONTACT INFORMATION

**WALTER SPOJA\***

Associate Vice President

905 501 6469

walter.spoja@cushwake.com

**JOSH BAIRD\***

Associate

905 501 6419

josh.baird@cushwake.com

**CUSHMAN & WAKEFIELD ULC, BROKERAGE**

1 Prologis Blvd., Suite 300

Mississauga, Ontario L5W 0G2

905 568 9500

[cushmanwakefield.com](http://cushmanwakefield.com)

©2025 Cushman & Wakefield. All rights reserved. The information contained in this communication is strictly confidential. This information has been obtained from sources believed to be reliable but has not been verified. No warranty or representation, express or implied, is made as to the condition of the property (or properties) referenced herein or as to the accuracy or completeness of the information contained herein, and same is submitted subject to errors, omissions, change of price, rental or other conditions, withdrawal without notice, and to any special listing conditions imposed by the property owner(s). Any projections, opinions or estimates are subject to uncertainty and do not signify current or future property performance. \*Sales Representative