

JETPORT COMMERCE PARK

Benjamin Rd & Jetport Industrial Blvd. Tampa, FL 33634



PLEASE CONTACT FOR ADDITIONAL INFORMATION:

TREY CARSWELL, SIOR
Managing Director
+1 813 230 6131
trey.carswell@cushwake.com

LISA ROSS, SIOR
Managing Director
+1 813 230 6131
lisa.ross@cushwake.com

SAM KOROLOS
Senior Associate
+1 704 989 1327
sam.korolos@cushwake.com

Melissa Watterworth
Associate
+1 813 599 2190
Melissa.watterworth@cushwake.com

JETPORT COMMERCE PARK

Benjamin Rd. & Jetport Industrial Blvd. Tampa, FL 33634



PROPERTY HIGHLIGHTS

- 18' Minimum Clear Height
- Dock High and Grade Level Loading
- Tilt-Wall Construction
- ½ Mile to the Veterans Expressway

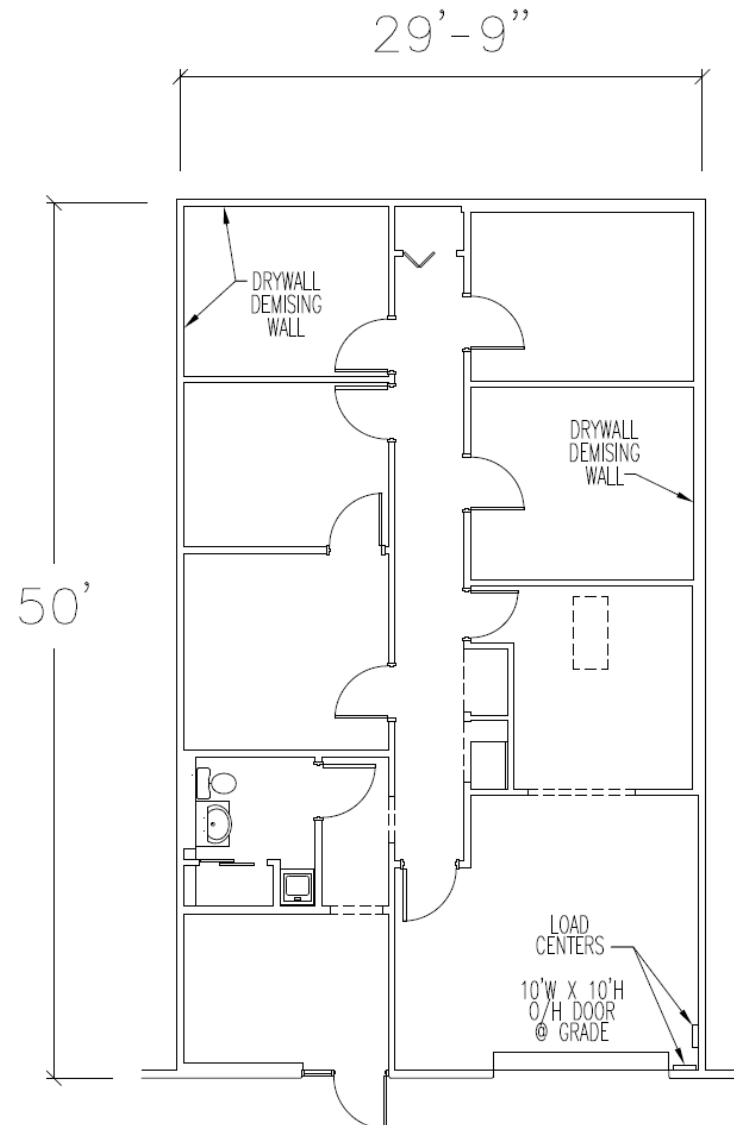
Veterans Expressway
Visibility and Frontage
on Benjamin Road

BUILDING 515

Suite 5914

SPACE HIGHLIGHTS

- **Available SF:** 1,500 SF
- **Office SF:** 1,116 SF
- **Loading:** 1 Grade Level Door
- **Available Now**



BUILDING 518

Suite 6102

SPACE HIGHLIGHTS

- **Available SF:** 1,809 SF
- **Office SF:** 300 SF
- **Loading:** 1 Dock High Door
- **Clear Height:** 18'
- **Available Now**

FLOORPLAN COMING SOON

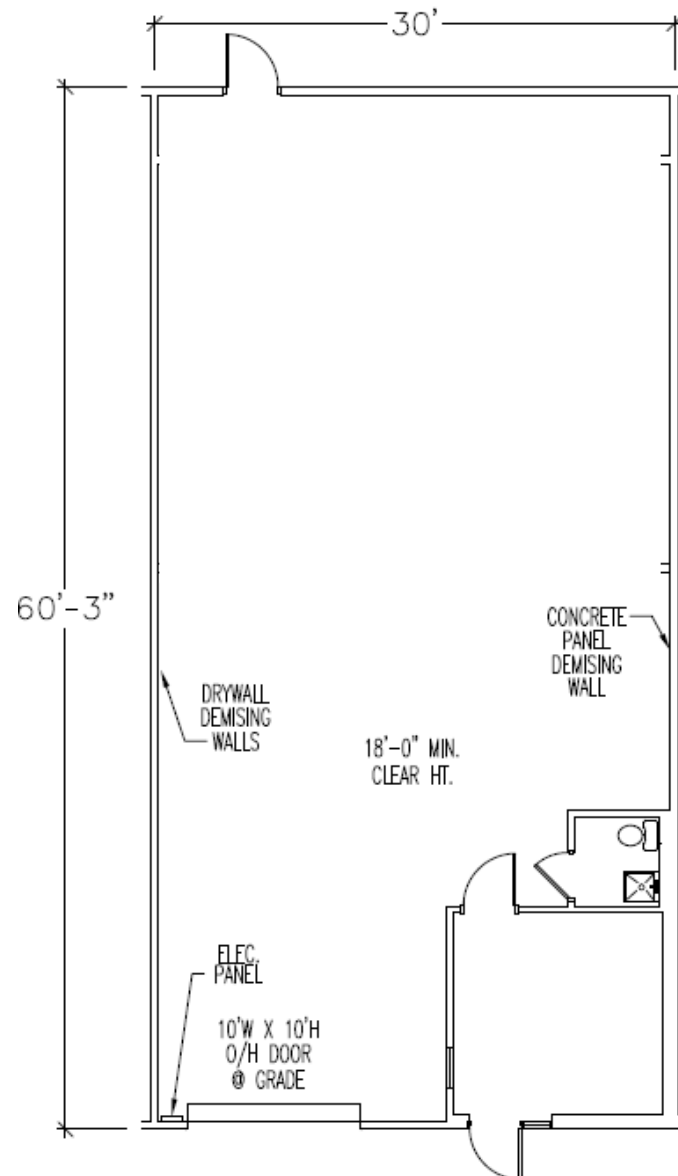


BUILDING 515

Suite 5900

SPACE HIGHLIGHTS

- Available SF: 1,899 SF
- Office SF: 183 SF
- Clear Height: 18'
- Loading: 1 Grade Level Door
- Available Now

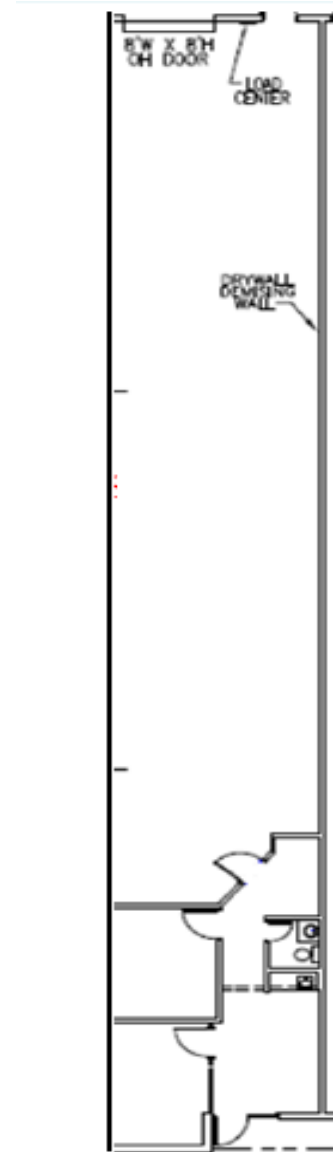


BUILDING 513

Suite 6009

SPACE HIGHLIGHTS

- Available SF: 2,400 SF
- Office SF: ~400 SF
- Loading: 1 Dock High Door
- Clear Height: 18'
- Available: 10/1/2025

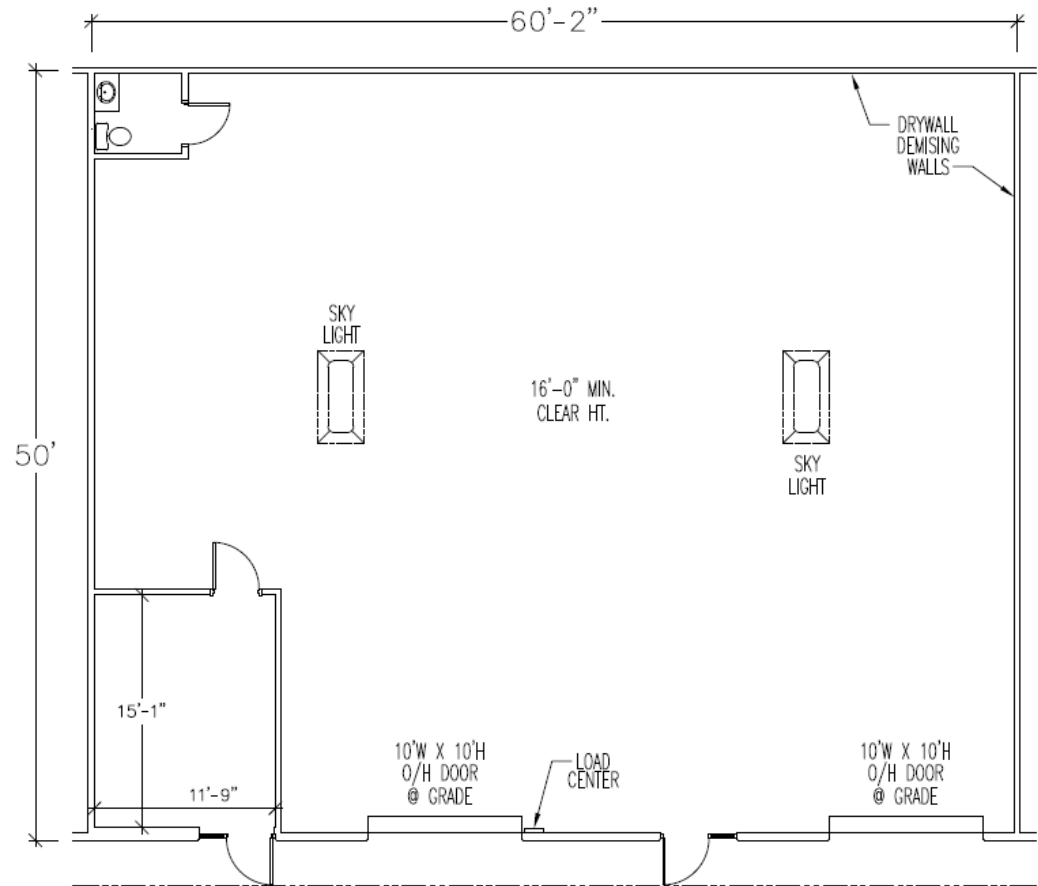


BUILDING 515

Suite 5922

SPACE HIGHLIGHTS

- **Available SF:** 3,189 SF
- **Office SF:** 191 SF
- **Loading:** 2 Grade Level Doors
- **Clear Height:** 16'
- **Available Now**

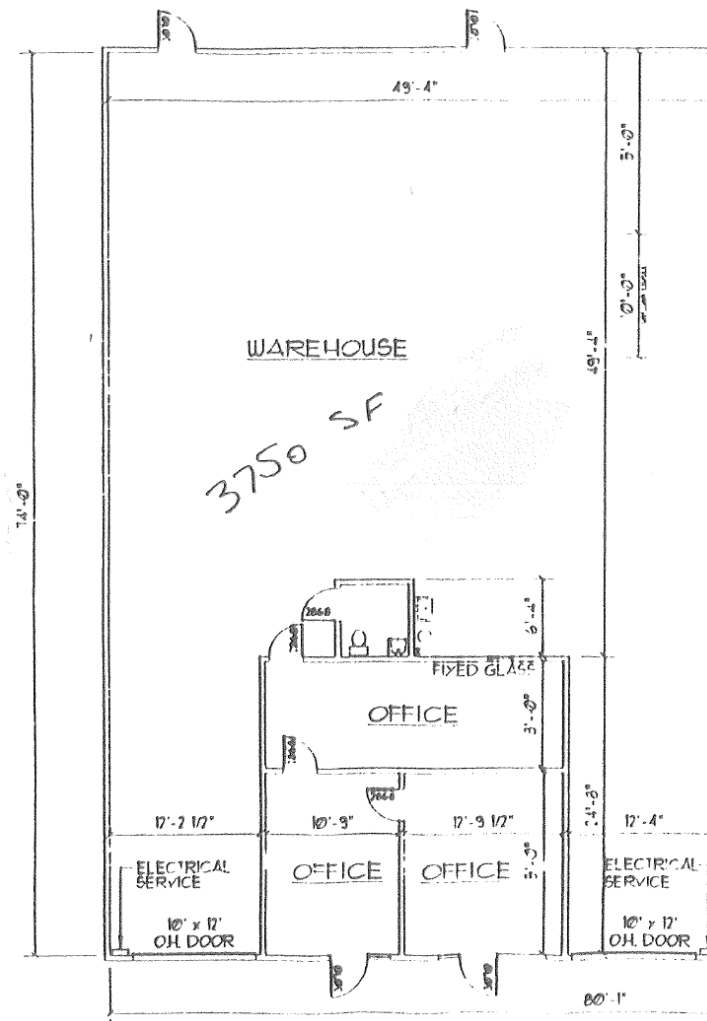


BUILDING 515

Suite 5892

SPACE HIGHLIGHTS

- Available SF: 3,750 SF
- Office SF: ~500 SF
- Loading: 2 Grade Level Doors
- Clear Height: 16'
- Available: 11/1/2025

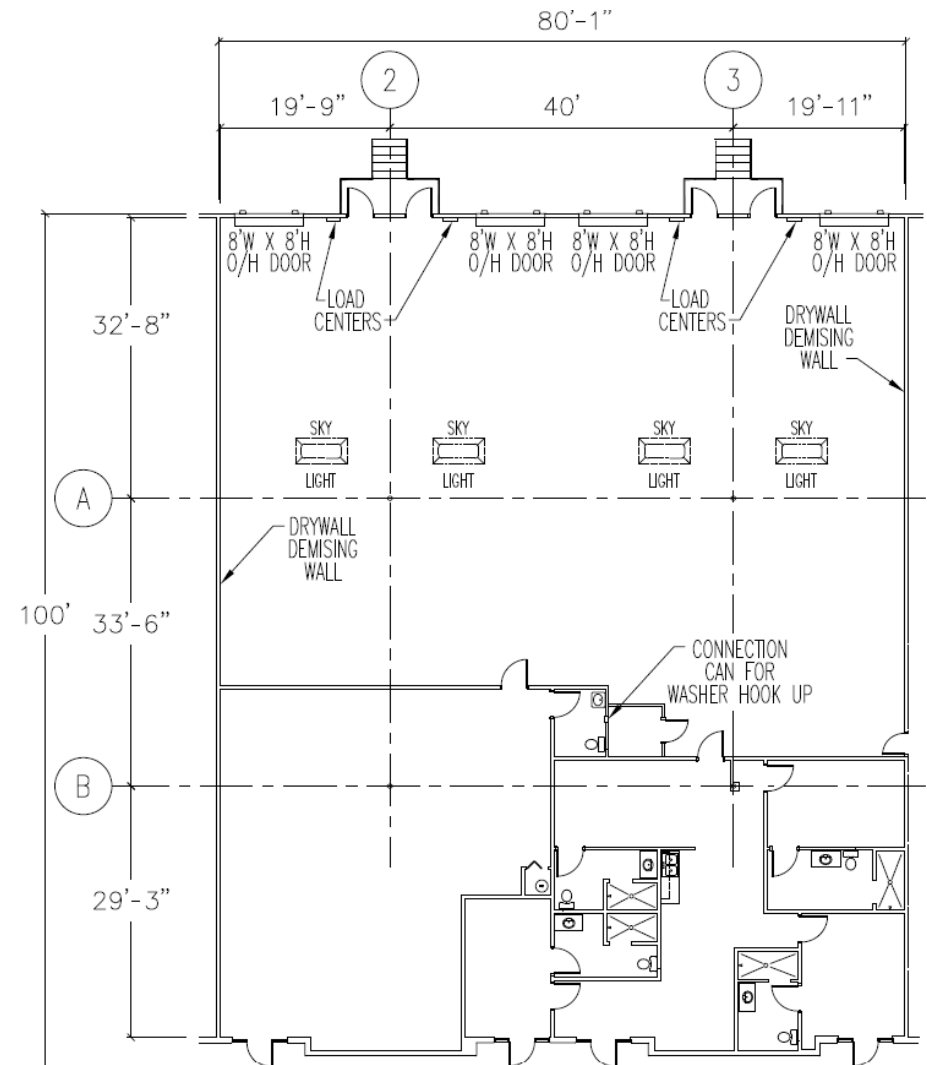


BUILDING 516

Suite 6014

SPACE HIGHLIGHTS

- **Available SF:** 8,000 SF
- **Office SF:** ~ 3,038 SF
- **Loading:** 4 Dock High Loading Doors
- **Clear Height:** 18'
- **Available Now**



BUILDING 512

Suite 6020-6026

SPACE HIGHLIGHTS

- **Available SF:** 10,800 SF
- **Office SF:** ~ 1,500 SF
- **Loading:** 4 Dock High Loading Doors
- **Clear Height:** 18'
- Landlord is open to taking down demising walls completely
- **Available Now**

