

280 Midpark

OFFICE SPACE FOR LEASE



280 Midpark Way SE, Calgary, AB

Property Highlights

280 Midpark Way SE is situated in the SE community of Midnapore. This two-storey office building offers on-site parking and is proximal to multiple transit stops. The property underwent significant renovations in 2015, enhancing its appeal and functionality. The building is within walking distance to many amenities in the immediate area, including restaurants, banks, shopping, entertainment, and services.



About the Building

Available Space

Suite 110: 1,367 sf

Operating Costs

\$16.69 psf (2025)

Building Class

B

Occupancy

January 1, 2026

Parking

104 above ground stalls

Tenant Allowance

Negotiable

Lease Rates

Market lease rates

Year Built

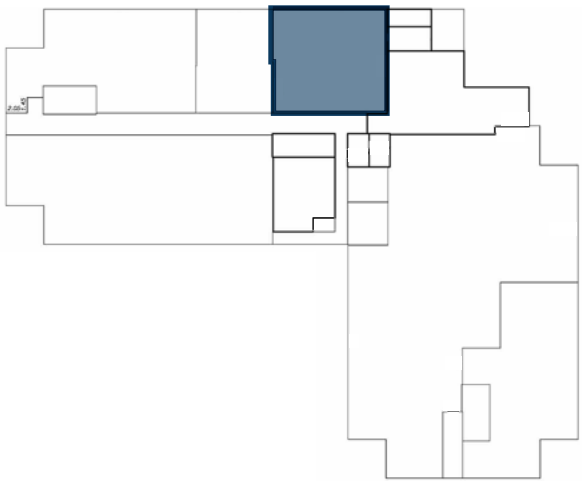
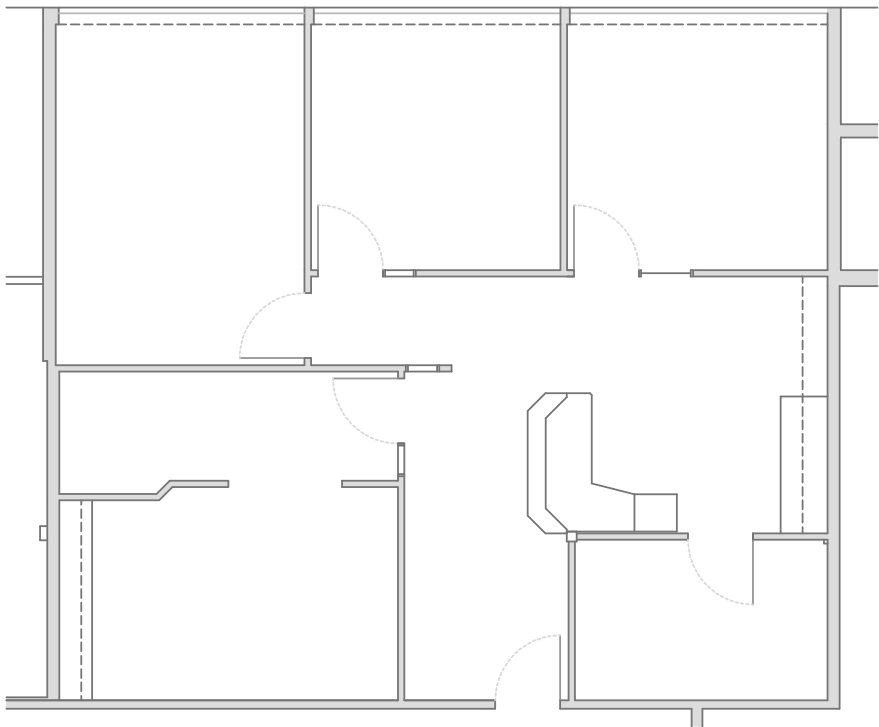
1981/2015



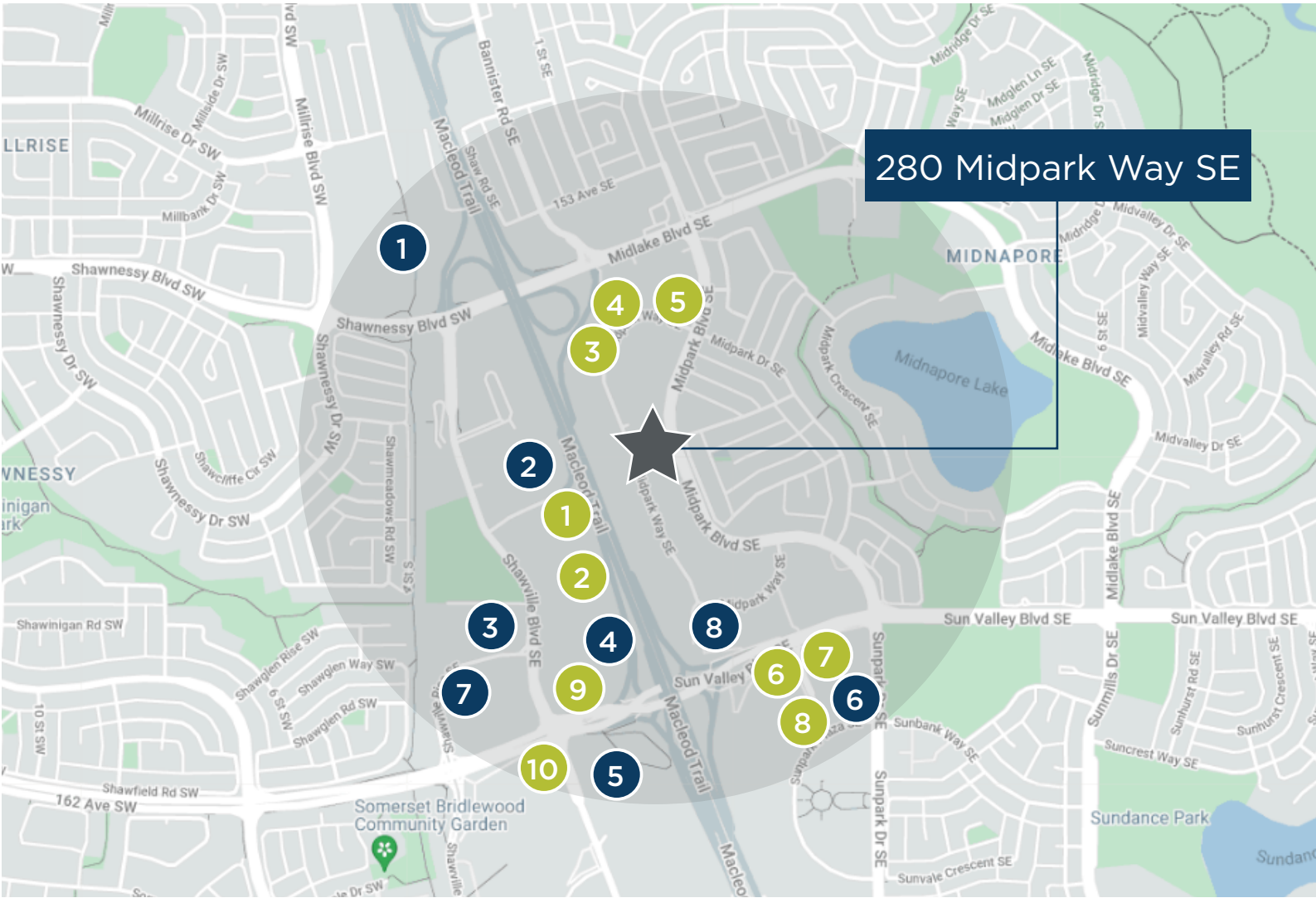
Floorplans

1st Floor

Suite 110: 1,367 sf



Area Amenities



280 Midpark Way SE

RESTAURANTS

- 1. Hudsons Canada Pub
- 2. Rusty's Roadhouse
- 3. McDonald's
- 4. Wendy's
- 5. Eggsmart
- 6. Original Joe's
- 7. CattleBaron Steakhouse
- 8. Starbucks
- 9. Blowers & Grafton
- 10. Boston Pizza

RETAIL & SERVICES

- 1. Sobeys
- 2. Real Canadian Superstore
- 3. TD Canada Trust
- 4. Safeway
- 5. Calgary Co-op
- 6. RBC
- 7. CIBC
- 8. Wingate Hotel





Contact

CUSHMAN & WAKEFIELD ULC
250 6 Ave SW, Suite 2400
Calgary, AB T2P 3H7
cushmanwakefield.com

TRENT PETERSON
Vice President
D. +1 403 261 1101
C. +1 403 771 5969
trent.peterson@cushwake.com

DAVID LEES
Executive Vice President
D. +1 403 261 1102
C. +1 403 869 5025
david.lees@cushwake.com

ADAM RAMSAY
Executive Vice President
D. +1 403 261 1103
C. +1 403 660 6390
adam.ramsay@cushwake.com

