

**FOR SUBLEASE
75,840 RSF AVAILABLE
(Full Floor Divisible)**

2500 CITYWEST

HOUSTON, TEXAS 77042

2500 CITYWEST

2500 CITYWEST BLVD



SUBLEASE HIGHLIGHTS

This premium sublease opportunity features executive corner offices, private window offices, private interior offices and open workstations designed to suit teams of all sizes. With multiple conference rooms, huddle spaces, storage spaces and versatile workroom areas, collaboration and productivity come naturally. Enjoy the convenience of large and small kitchen/breakroom options, ideal for casual gatherings or quick breaks. Whether you're scaling up or seeking a professional upgrade, this space offers flexibility, functionality, and a polished environment to thrive.

SUBLEASE DETAILS

Sublease Premises:	75,840 RSF (Full Floor Divisible)	
	Part Floor 1	6,759 RSF
	Entire Floor 5	23,018 RSF
	Entire Floor 6	23,018 RSF
	Entire Floor 12	23,045 RSF

Available: Immediate

Term: Through December 31, 2031

Net Rate: Negotiable

2025 Opex: Estimated @ \$16.36/RSF

Parking: 3.50/1,000 RSF
Unreserved - \$40/space/month
Reserved - \$75/space/month

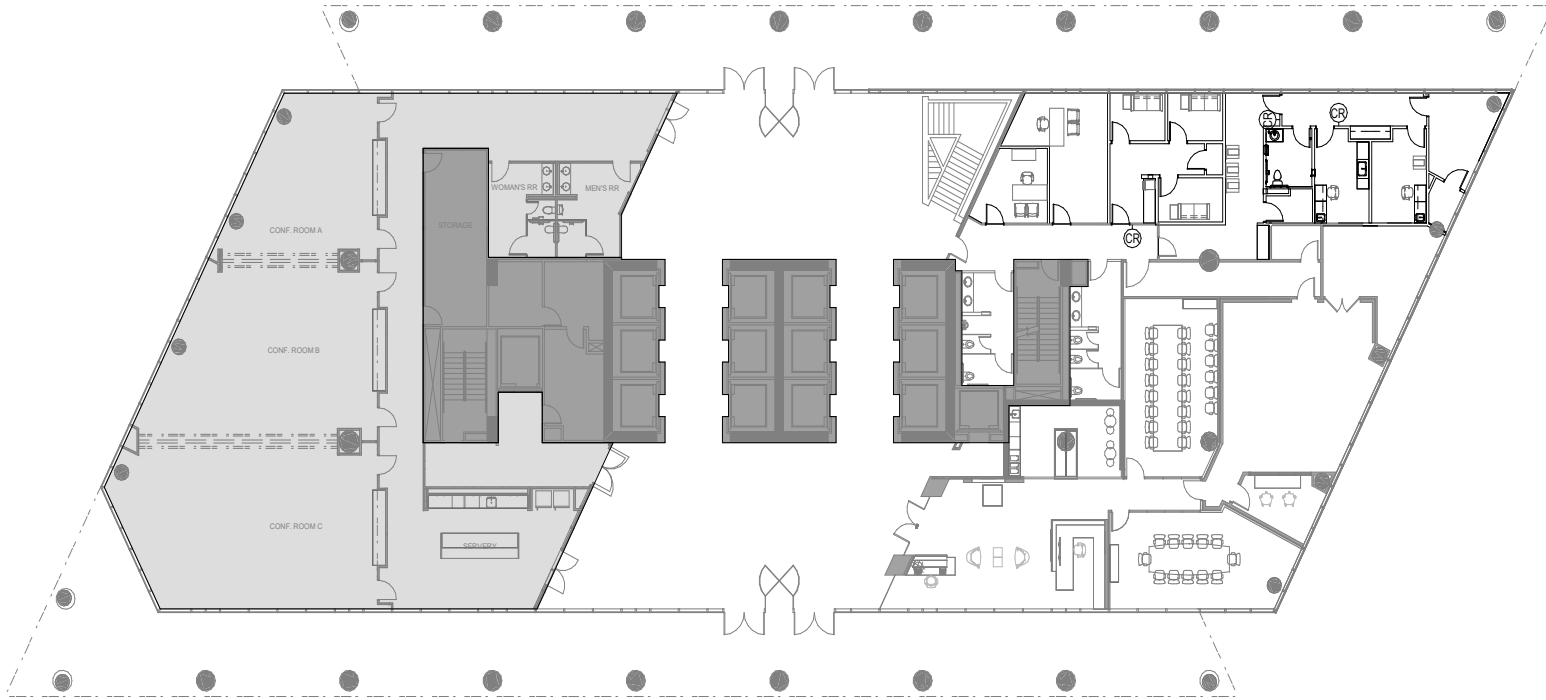
Furniture: Available

2500 CITYWEST

2500 CityWest Blvd

Floor 1

6,759 RSF

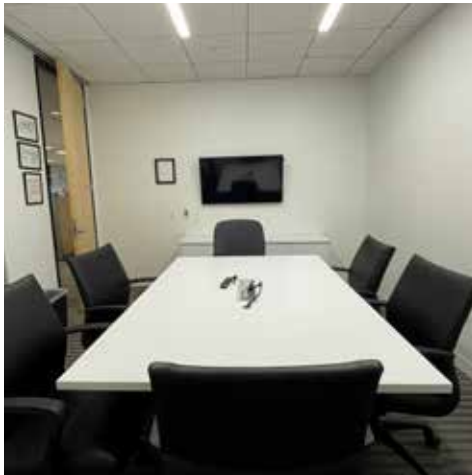
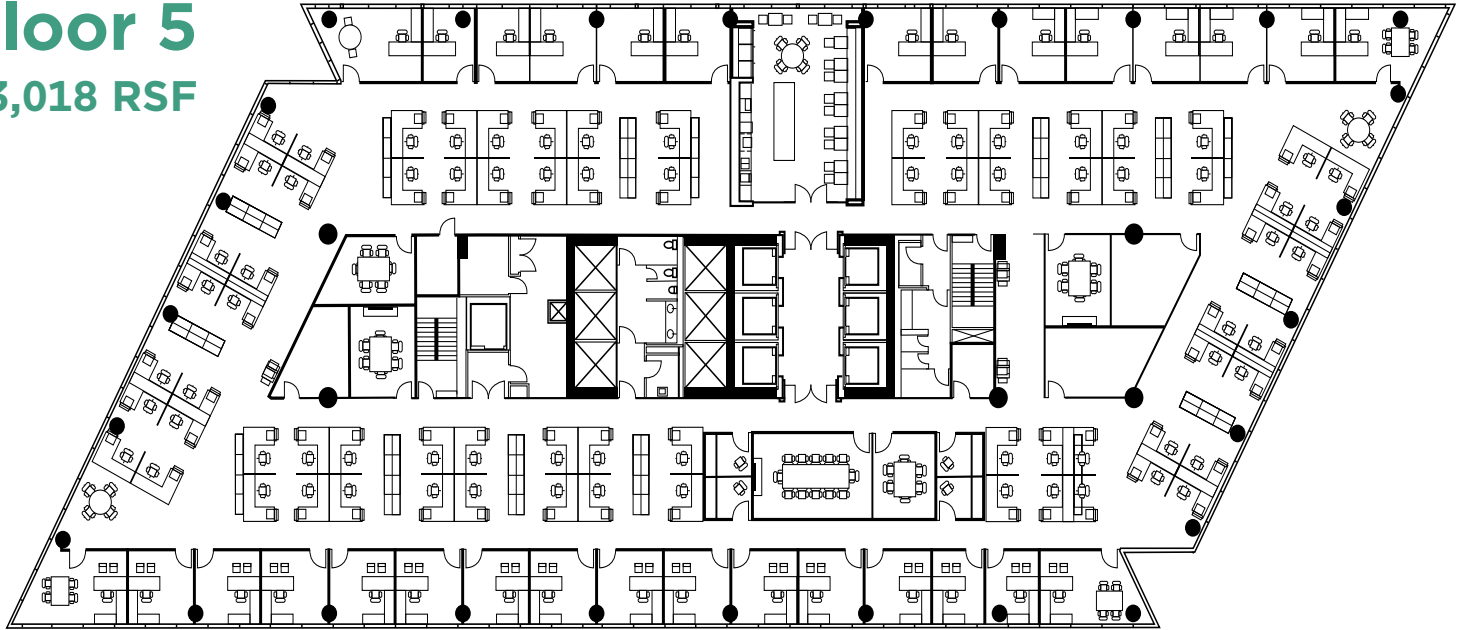


2500 CITYWEST

2500 CityWest Blvd

Floor 5

23,018 RSF

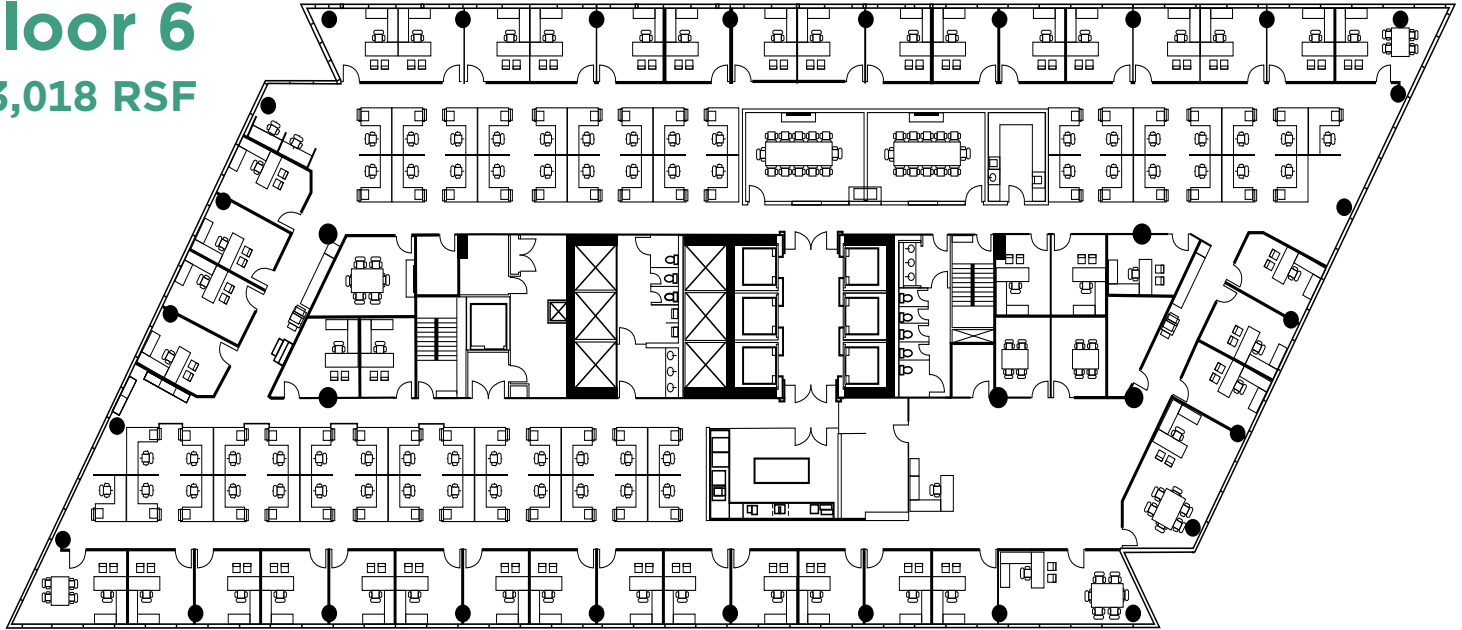


2500 CITYWEST

2500 CityWest Blvd

Floor 6

23,018 RSF

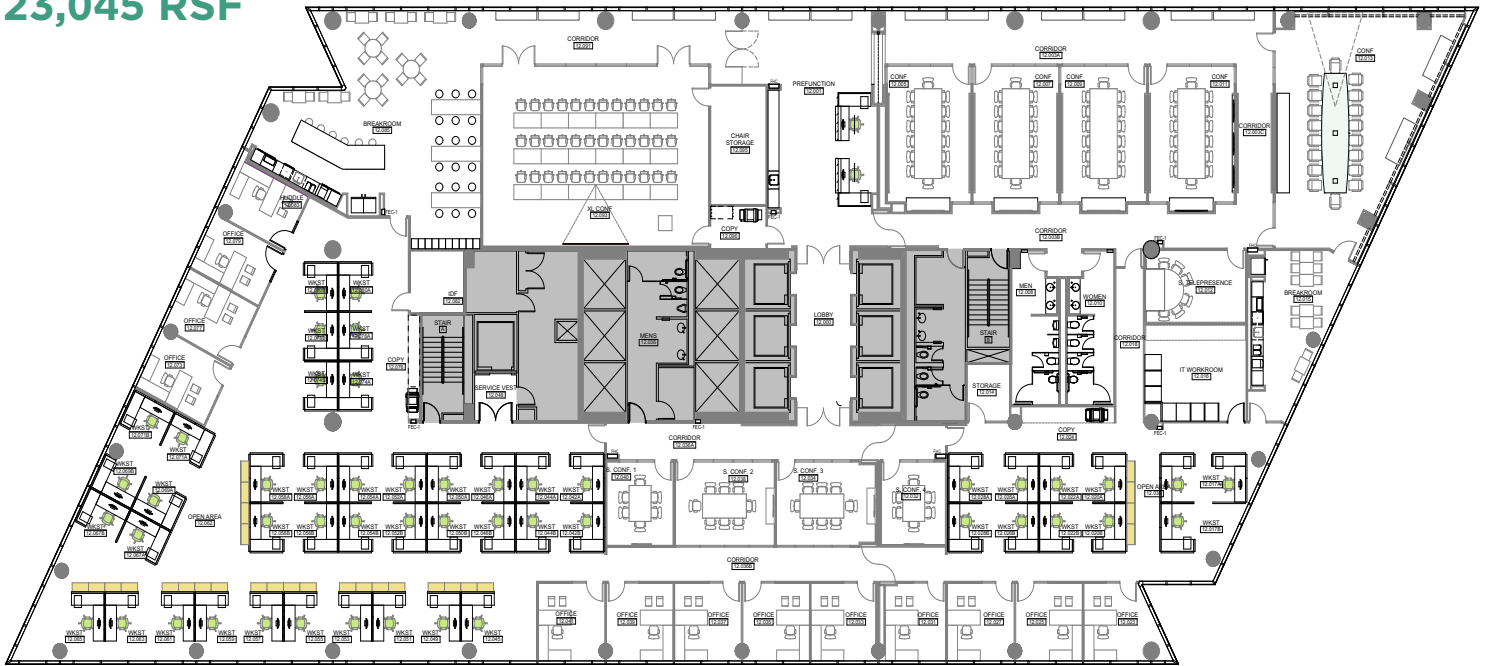


2500 CITYWEST

2500 CityWest Blvd

Floor 12

23,045 RSF





1330 Post Oak Blvd, Suite 2600
Houston, Texas 77056
+1 713 877 1700
cushmanwakefield.com

CONTACT:

DAVID GUION
Executive Managing Director
+1 713 963 2810
david.guion@cushwake.com

ALBERT SPIERS
Senior Associate
+1 713 260 0218
albert.spiers@cushwake.com

TIM RELYEA
Executive Vice Chairman
+1 713 877 8752
tim.relyea@cushwake.com