

FOR SUBLEASE

2500 CITYWEST

2500 CityWest Boulevard
Houston, Texas 77042

46,036 RSF AVAILABLE
(Full Floor Divisible)



CONTACT US:

DAVID GUION

Executive Managing Director
+1 713 963 2810
david.guion@cushwake.com

ALBERT SPIERS

Senior Associate
+1 713 260 0218
albert.spiers@cushwake.com

TIM RELYEA

Executive Vice Chairman
+1 713 877 8752
tim.relyea@cushwake.com



2500 CITYWEST



SUBLEASE HIGHLIGHTS

This premium sublease opportunity features executive corner offices, private window offices, private interior offices and open workstations designed to suit teams of all sizes. With multiple conference rooms, huddle spaces, storage spaces and versatile workroom areas, collaboration and productivity come naturally. Enjoy the convenience of large and small kitchen/breakroom options, ideal for casual gatherings or quick breaks. Whether you're scaling up or seeking a professional upgrade, this space offers flexibility, functionality, and a polished environment to thrive.

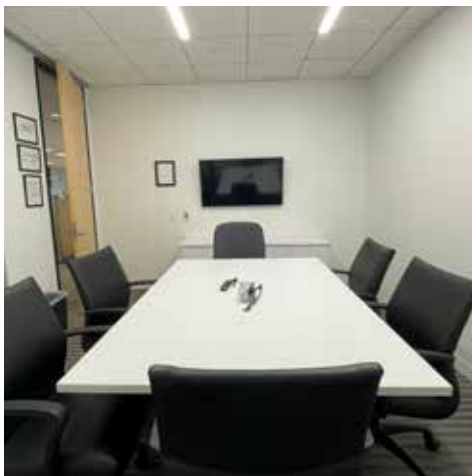
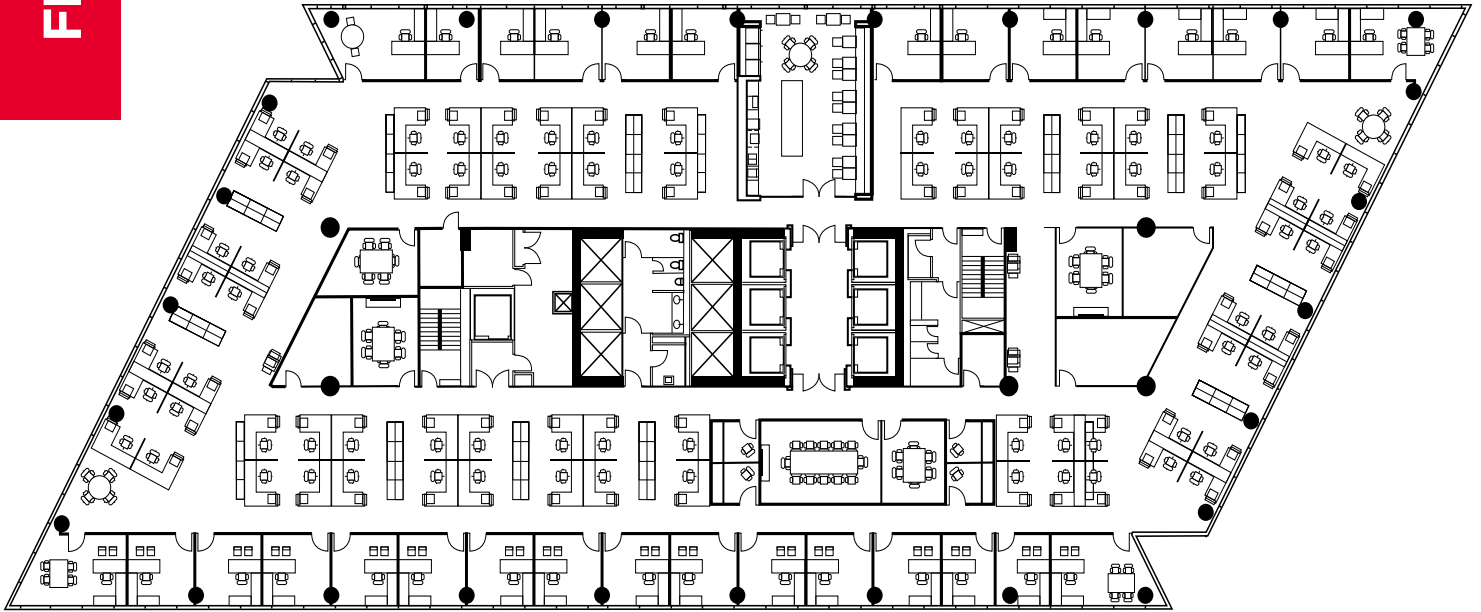
SUBLEASE DETAILS

	46,036 RSF*
Sublease Premises:	Floor 5 - 23,018 RSF Floor 6 - 23,018 RSF * Full Floor Divisible
Available:	Immediate
Term:	Through December 31, 2031
Net Rate:	Negotiable
2025 Opex:	Estimated @ \$16.36 RSF
	3.50/1,000 RSF
Parking:	Unreserved - \$40/space/month Reserved - \$75/space/month
Furniture:	Available



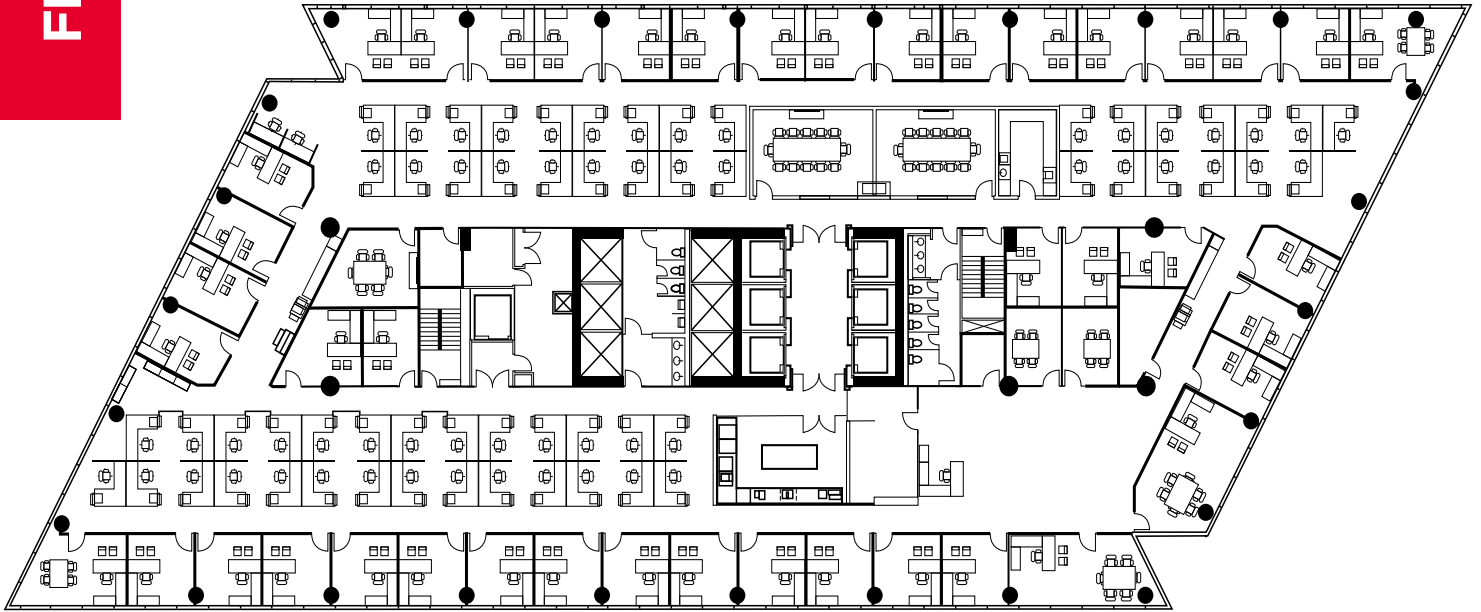
FLOOR 5

23,018 RSF



FLOOR 6

23,018 RSF





CONTACT INFORMATION

DAVID GUION

Executive Managing Director
+1 713 963 2810
david.guion@cushwake.com

ALBERT SPIERS

Senior Associate
+1 713 260 0218
albert.spiers@cushwake.com

TIM RELYEA

Executive Vice Chairman
+1 713 877 8752
tim.relyea@cushwake.com

1330 Post Oak Boulevard,
Suite 2600
Houston, Texas 77056
+1 713 877 1700

cushmanwakefield.com

©2025 Cushman & Wakefield. All rights reserved. The information contained in this communication is strictly confidential. This information has been obtained from sources believed to be reliable but has not been verified. NO WARRANTY OR REPRESENTATION, EXPRESS OR IMPLIED, IS MADE AS TO THE CONDITION OF THE PROPERTY (OR PROPERTIES) REFERENCED HEREIN OR AS TO THE ACCURACY OR COMPLETENESS OF THE INFORMATION CONTAINED HEREIN, AND SAME IS SUBMITTED SUBJECT TO ERRORS, OMISSIONS, CHANGE OF PRICE, RENTAL OR OTHER CONDITIONS, WITHDRAWAL WITHOUT NOTICE, AND TO ANY SPECIAL LISTING CONDITIONS IMPOSED BY THE PROPERTY OWNER(S). ANY PROJECTIONS, OPINIONS OR ESTIMATES ARE SUBJECT TO UNCERTAINTY AND DO NOT SIGNIFY CURRENT OR FUTURE PROPERTY PERFORMANCE.