

THREE GOVERNOR

5120 Shoreham Place, San Diego, CA



PROPERTY OVERVIEW

Three Governor is a premier courtyard-style office building featuring private patios to tenant suites, outdoor seating and meeting areas, and updated common areas and restrooms. Located within the Golden Triangle, Governor Park provides immediate access to the I-805, CA-52, and I-5 freeways.



Monument
Signage
Available

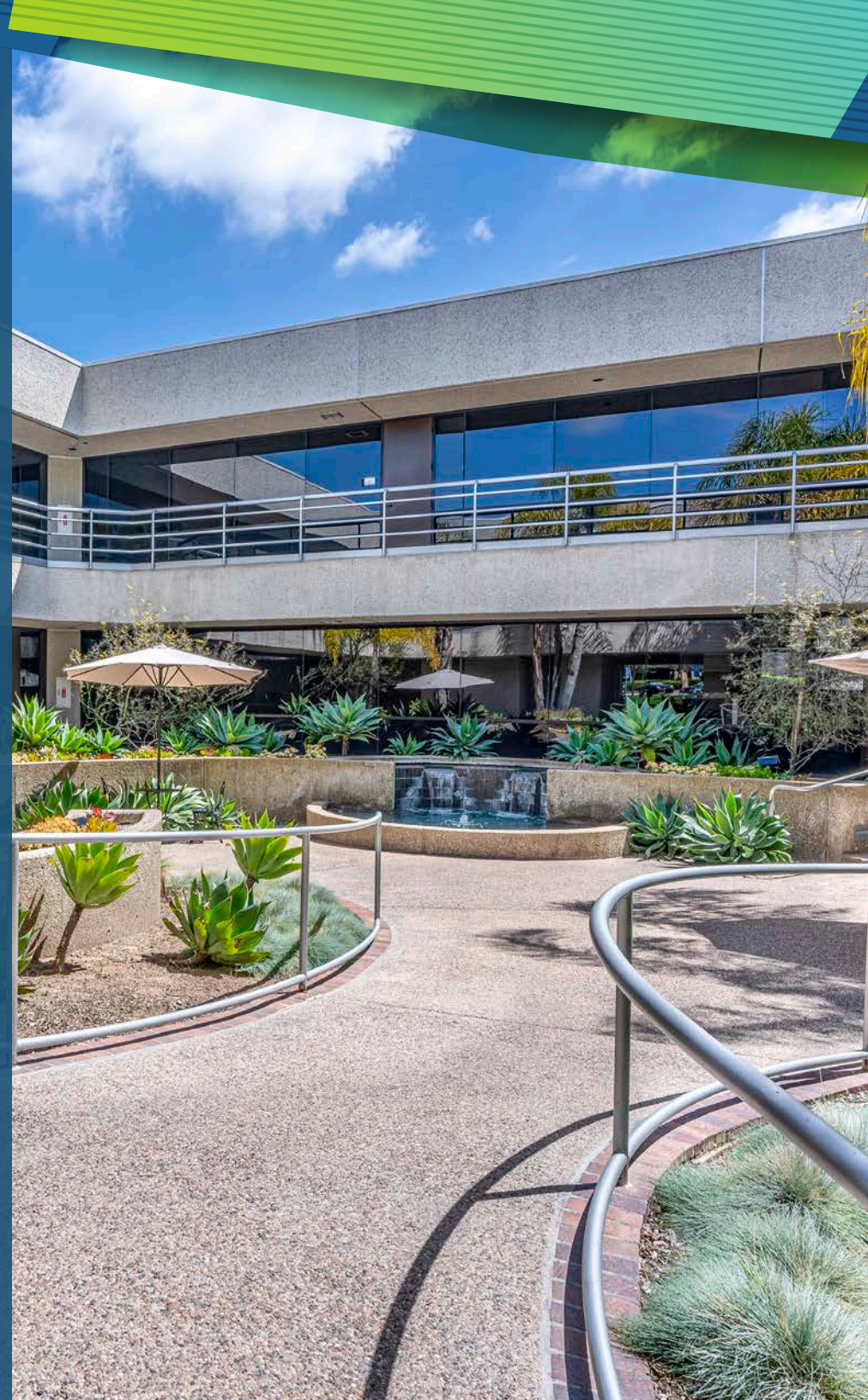


Private
Patios



4/1,000
Parking Ratio

- Building: 39,081 RSF
- Separately Metered Electrical
- HVAC - Individual Package Units
- Telecom Provider: AT&T
- Outdoor Meeting Areas



AVAILABILITIES

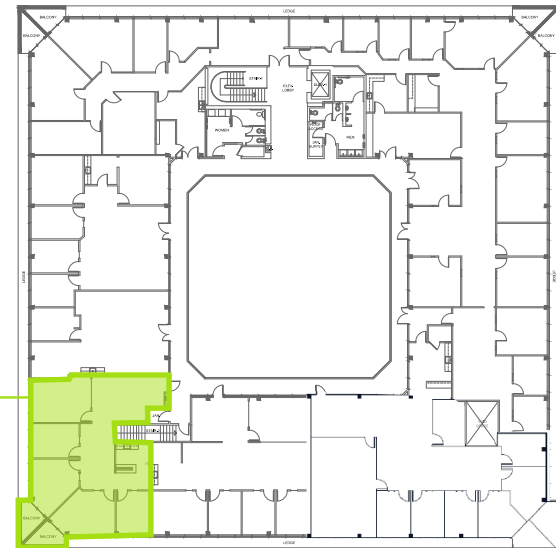
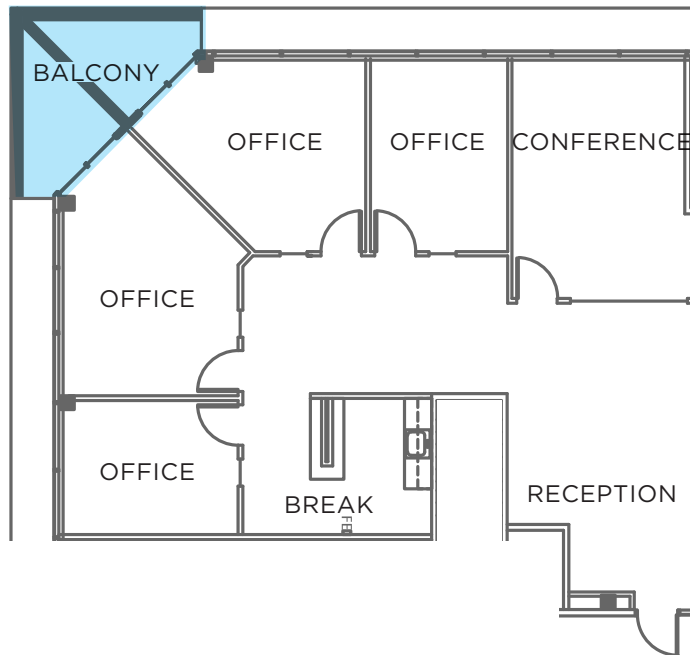
SUITE #	TOTAL SF	LEASE RATE	AVAILABLE
275	1,963 SF	\$2.75/SF +E	Oct 2026
285	3,268 SF	\$2.75/SF +E	Now



AVAILABILITIES



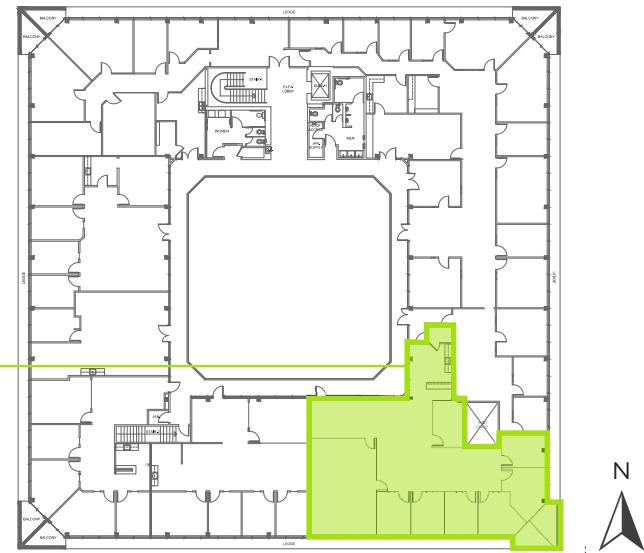
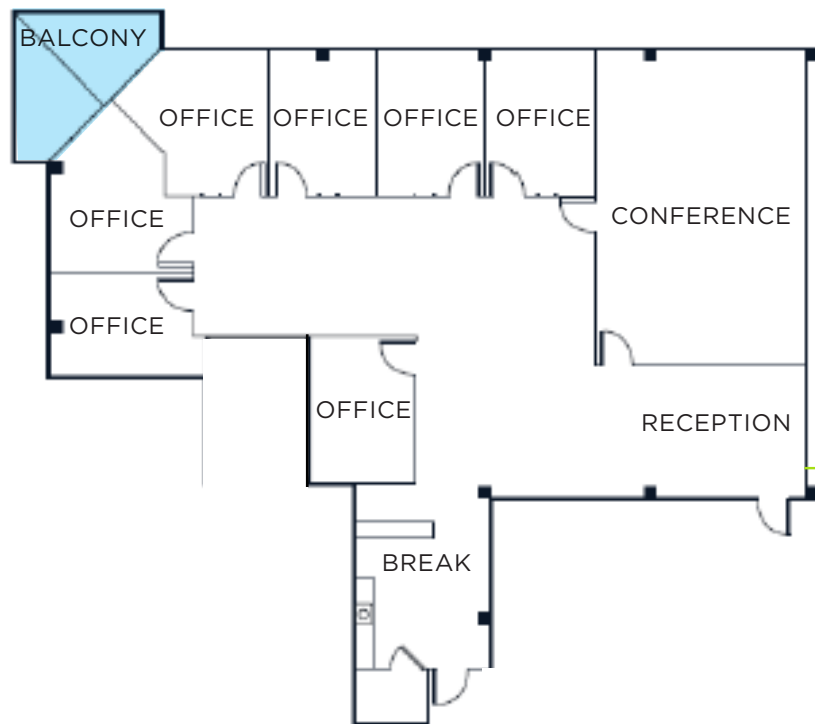
SUITE #	TOTAL SF	LEASE RATE	AVAILABLE	SUITE COMMENTS
275	1,963 SF	\$2.75/SF +E	Oct 2026	Suite includes four (4) private offices, conference room, break room, open office area and balcony.



AVAILABILITIES



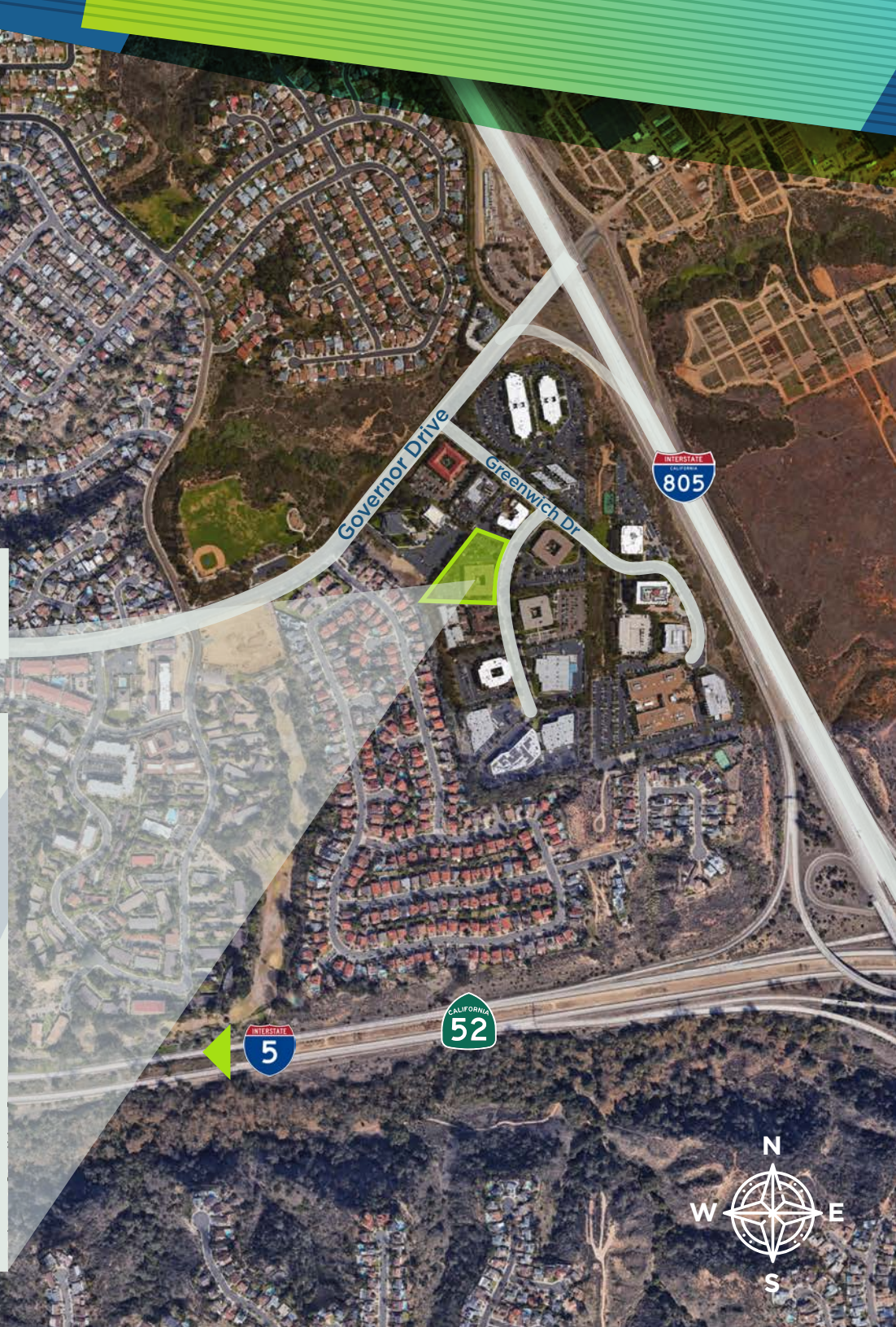
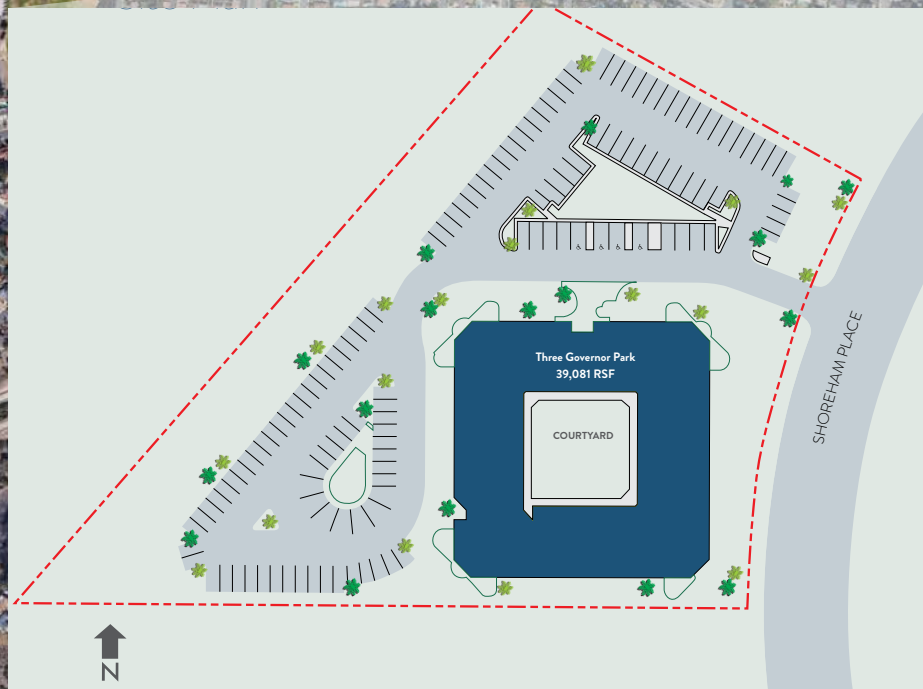
SUITE #	TOTAL SF	LEASE RATE	AVAILABLE	SUITE COMMENTS
285	3,268 SF	\$2.75/SF +E	Now	Suite includes seven (7) private offices, conference room, break room, open office area and balcony.



LOCATION

THREE GOVERNOR

5120 Shoreham Place, San Diego, CA





ABUNDANCE OF AMENITIES WITHIN A SHORT DISTANCE OF THE PROJECT



RENAISSANCE TOWNE CENTRE
4 MIN DRIVE

WESTFIELD UTC
5 MIN DRIVE



THREE GOVERNOR

5120 Shoreham Place, San Diego, CA



**CUSHMAN &
WAKEFIELD**

For more information,
please contact:

12830 El Camino Real, Suite 100
San Diego, CA 92130
Ph. 858.546.5400
Fax 858.630.6320
cushmanwakefield.com

MIKE NOVKOV
858.546.5412
mike.novkov@cushwake.com
CA Lic # 01890388

CONNOR WIECK
858.546.5487
connor.wieck@cushwake.com
CA Lic # 02007940

OMNINET