

Up to ±4,457 SF of Street Level Retail Space Available for Lease

# NANDA ON PACIFIC

1547 PACIFIC AVENUE, SANTA CRUZ, CA



# NANDA ON PACIFIC

1547 Pacific Avenue



## PROPERTY HIGHLIGHTS

- Iconic Building
- Ground Floor of mixed use 79 Residential Unit Mixed Use Project.
- Premier Location - Corner of Pacific Ave and Mission Street
- Excellent Downtown Location - Adjacent to downtown shops and services.
- Suite is set up nicely for a food and beverage user
- Beautiful windows and tall ceilings.

### Prime Location

**High-Visibility Corner:** Situated on Pacific Ave, part of Santa Cruz's vibrant downtown corridor, surrounded by cafes, boutiques, offices, UC Santa Cruz, and the Beach Boardwalk

**Exceptional Walk & Transit Scores:** The building earns a Walk Score of 99 ("Walker's Paradise") and a Transit Score of 52 ("Good Transit")—guaranteeing strong foot traffic and easy access

## SIZE OPTIONS

Suite A	±2,022 RSF
Suite B	±1,520 RSF
Suite A + B	±3,542 RSF
<b>Total Area</b>	<b>+4,457 RSF (include storage and etc.)</b>

**Call the Agent for Pricing**

*\*\*NNN's estimated TBD*

### Useful Information:

[downtownsantacruz.com](http://downtownsantacruz.com)

[choosesantacruz.com](http://choosesantacruz.com)



# AMENITIES MAP



Jamba  
Verve Coffee Roasters  
Zoccoli's Delicatessen  
Leaf and Vine  
Lively Kids  
Realm  
Comicipolis

Crepe Cones  
Bookshop Santa Cruz  
NahNa  
Pacific Wave  
Laili Restaurant  
Chocolat

Ibiza  
Poke House  
Hidden Peak Teahouse

Full Steam Dumpling  
Chubbs Chicken Sandwiches  
11th Hour Coffee  
Santa Cruz Theatre

**NANDA ON PACIFIC**  
1547 Pacific Avenue

Botanic and Luxe  
FreeStyle Clothing Exchange  
Santa Cruz Coffee Roasting  
Rosie McCabb's Irish Pub  
Artisans & agency  
Mark's Records  
Bunny's Shoes

Hat Co  
IT'S SUGAR  
Homeless Garden  
El Palomar  
Betty's Eat Inn  
Moon Kissed



Variance  
Portal of Love  
Miss Jessie May's  
Free People  
Toque Blanche  
Shen's Gallery  
Virgo Santa Cruz  
Sockshop & Shoe Company

Mad Yolks  
Moziac  
Urban Outfitters  
Santa Cruz Cinema  
The Chocolate Studio  
Gabiella Cafe

**SANTA CRUZ  
PUBLIC  
LIBRARY**  
**SANTA CRUZ  
CITY HALL**

**CIVIC  
AUDITORIUM**

GAP  
Berdels  
Hook & Line  
Stripe  
Arslans Turkish  
Food Talk  
Caficic Cookie Co  
Om Gallery  
Izzy's Ices  
Love Me Two Times

**TRADER  
JOE'S**

**CVS/pharmacy**

Mobo Sushi  
LuvMart

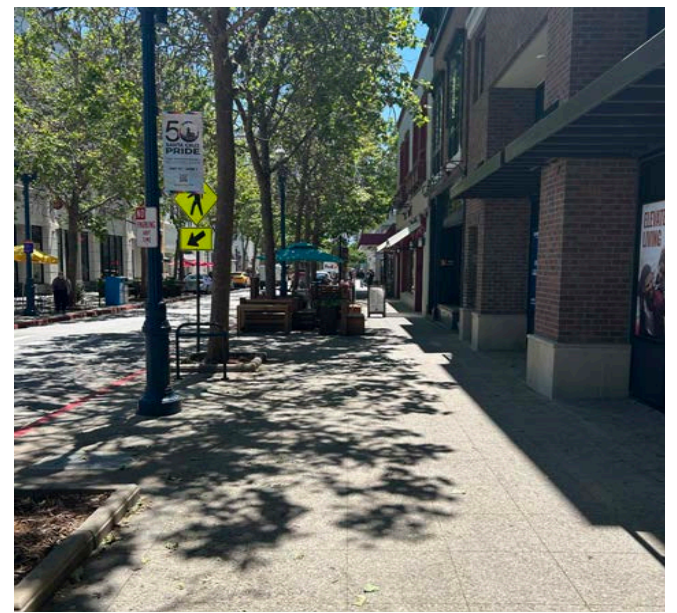




# NANDA ON PACIFIC

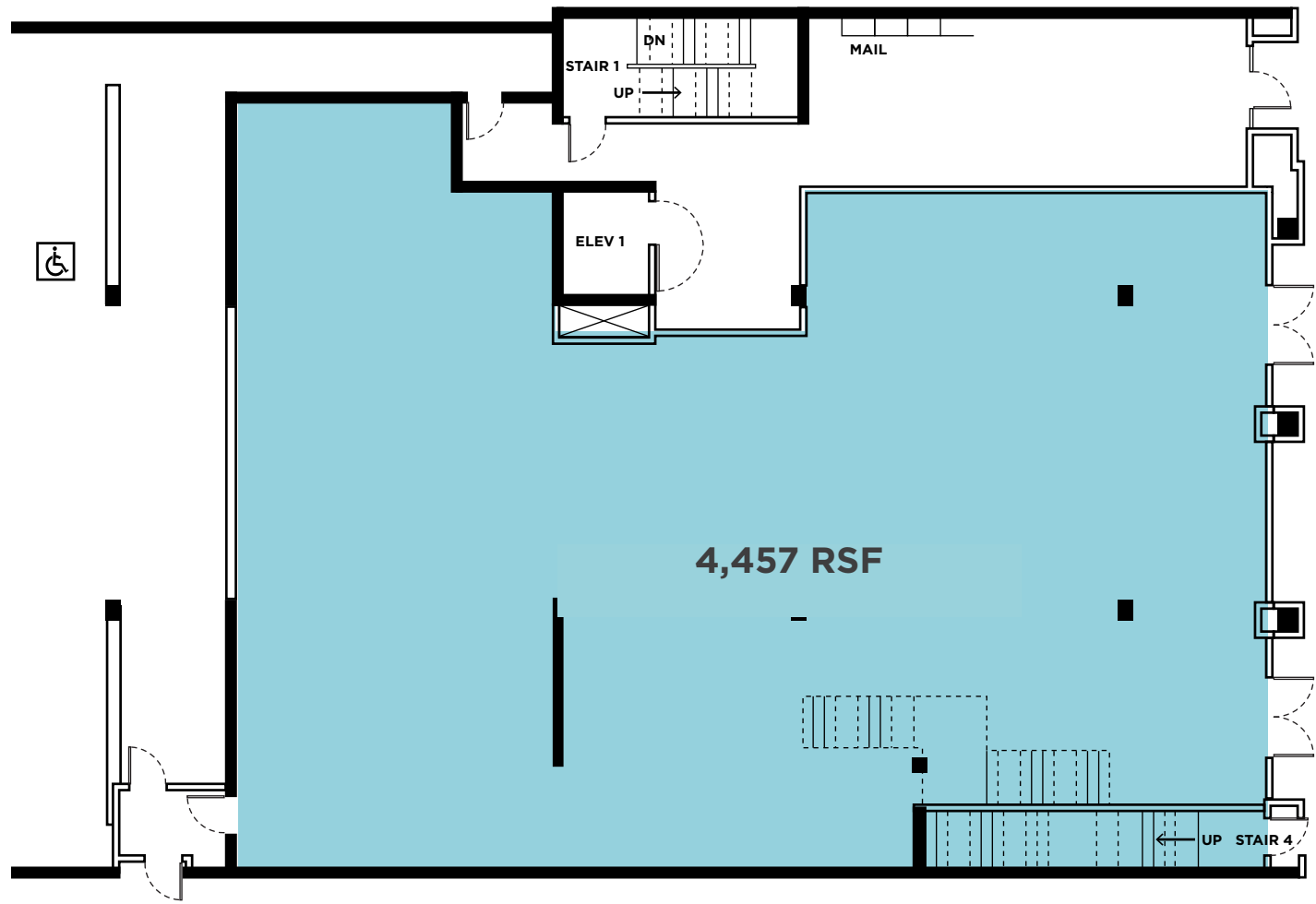
1547 Pacific Avenue

## PROPERTY PHOTOS



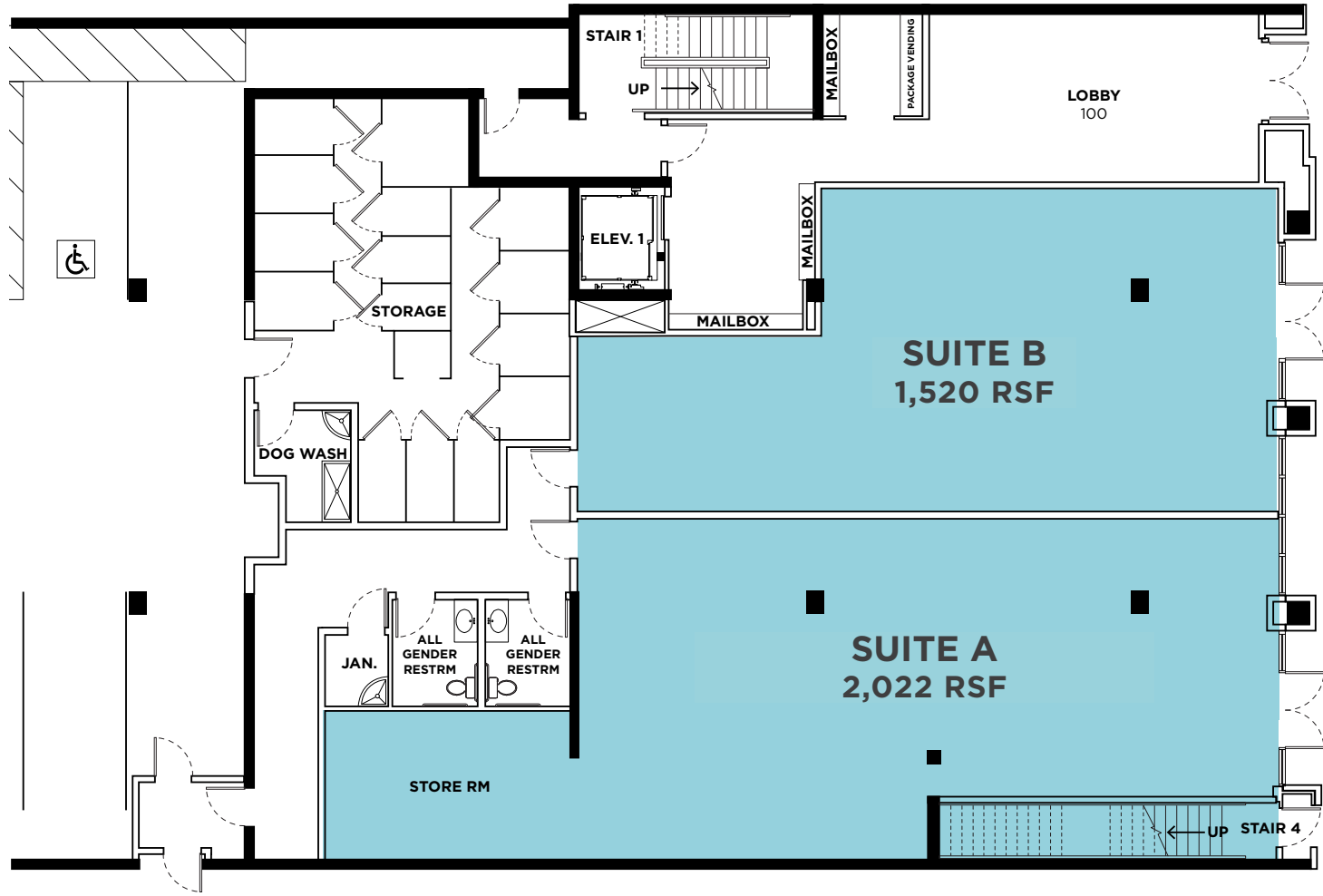
NANDA ON PACIFIC  
1547 Pacific Avenue

FLOOR  
PLAN



NANDA ON PACIFIC  
1547 Pacific Avenue

DEMISING  
PLAN







**CUSHMAN &  
WAKEFIELD**

**FOR MORE INFORMATION, CONTACT:**

**NICHOLAS GREENUP**

Senior Associate  
+1 831 647 2106  
[nicholas.greenup@cushwake.com](mailto:nicholas.greenup@cushwake.com)  
LIC #02143358

**SCOTT O'BRIEN**

Director  
+1 650 320 0296  
[scott.obrien@cushwake.com](mailto:scott.obrien@cushwake.com)  
LIC #01339087

**MIKI CORREA**

Managing Director  
+1 408 642 0826  
[miki.correa@cushwake.com](mailto:miki.correa@cushwake.com)  
LIC #01718959

Doud Arcade Building, Suite #202  
South Ocean Avenue  
P.O. Box 999  
Carmel-by-the-Sea, CA 93921 | USA  
+1 831 375 8000  
[cushmanwakefield.com](http://cushmanwakefield.com)

©2025 Cushman & Wakefield. All rights reserved. The information contained in this communication is strictly confidential. This information has been obtained from sources believed to be reliable but has not been verified. NO WARRANTY OR REPRESENTATION, EXPRESS OR IMPLIED, IS MADE AS TO THE CONDITION OF THE PROPERTY (OR PROPERTIES) REFERENCED HEREIN OR AS TO THE ACCURACY OR COMPLETENESS OF THE INFORMATION CONTAINED HEREIN, AND SAME IS SUBMITTED SUBJECT TO ERRORS, OMISSIONS, CHANGE OF PRICE, RENTAL OR OTHER CONDITIONS, WITHDRAWAL WITHOUT NOTICE, AND TO ANY SPECIAL LISTING CONDITIONS IMPOSED BY THE PROPERTY OWNER(S). ANY PROJECTIONS, OPINIONS OR ESTIMATES ARE SUBJECT TO UNCERTAINTY AND DO NOT SIGNIFY CURRENT OR FUTURE PROPERTY PERFORMANCE