

763 CONCORD
AVENUE
CAMBRIDGE, MA

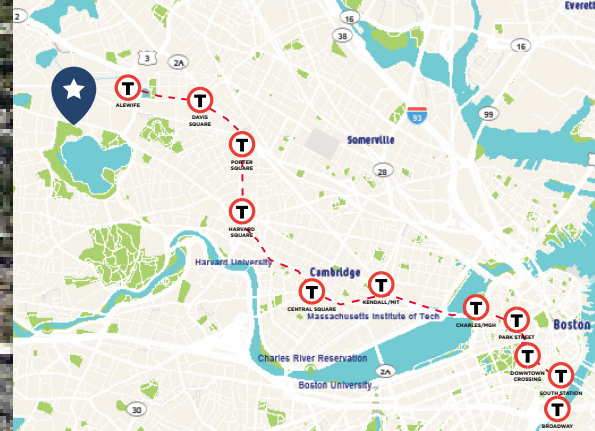


Now Available

3,110 SF of Existing Office and Lab Space

Located in the West Cambridge Science Park
Immediate Occupancy

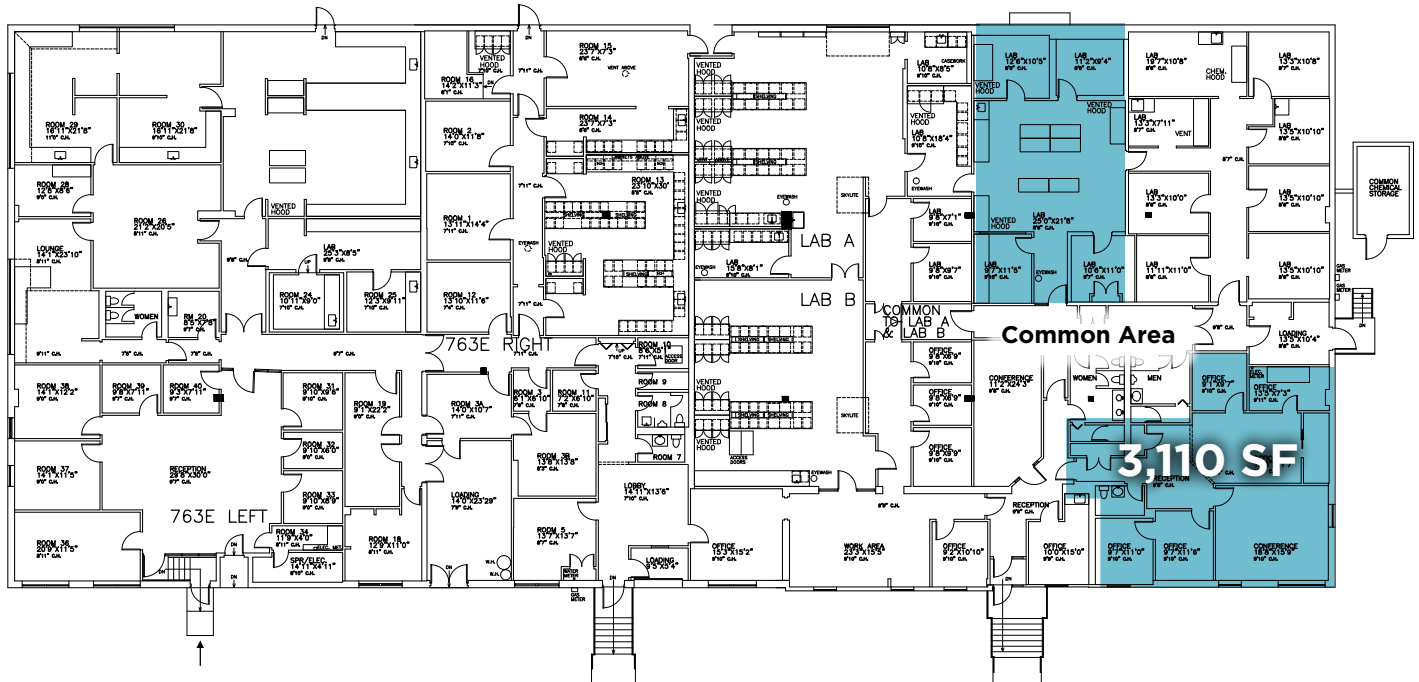
LOCATION



763 Concord Avenue



1ST FLOOR | 3,110 SF



CONTACT US:

CHRISTOPHER WALSH

+1 617 320 7495

christopher.walsh@cushwake.com

STEVEN PESAPANE

+1 631 645 7059

steven.pesapane@cushwake.com



CUSHMAN & WAKEFIELD

©2024 Cushman & Wakefield. All rights reserved. The information contained in this communication is strictly confidential. This information has been obtained from sources believed to be reliable but has not been verified. NO WARRANTY OR REPRESENTATION, EXPRESS OR IMPLIED, IS MADE AS TO THE CONDITION OF THE PROPERTY (OR PROPERTIES) REFERENCED HEREIN OR AS TO THE ACCURACY OR COMPLETENESS OF THE INFORMATION CONTAINED HEREIN, AND SAME IS SUBMITTED SUBJECT TO ERRORS, OMISSIONS, CHANGE OF PRICE, RENTAL OR OTHER CONDITIONS, WITHDRAWAL WITHOUT NOTICE, AND TO ANY SPECIAL LISTING CONDITIONS IMPOSED BY THE PROPERTY OWNER(S). ANY PROJECTIONS, OPINIONS OR ESTIMATES ARE SUBJECT TO UNCERTAINTY AND DO NOT SIGNIFY CURRENT OR FUTURE PROPERTY PERFORMANCE.