



# In the Heart of **Boston's Financial District**

Morgan Stanley

28 STATE



CUSHMAN &  
WAKEFIELD

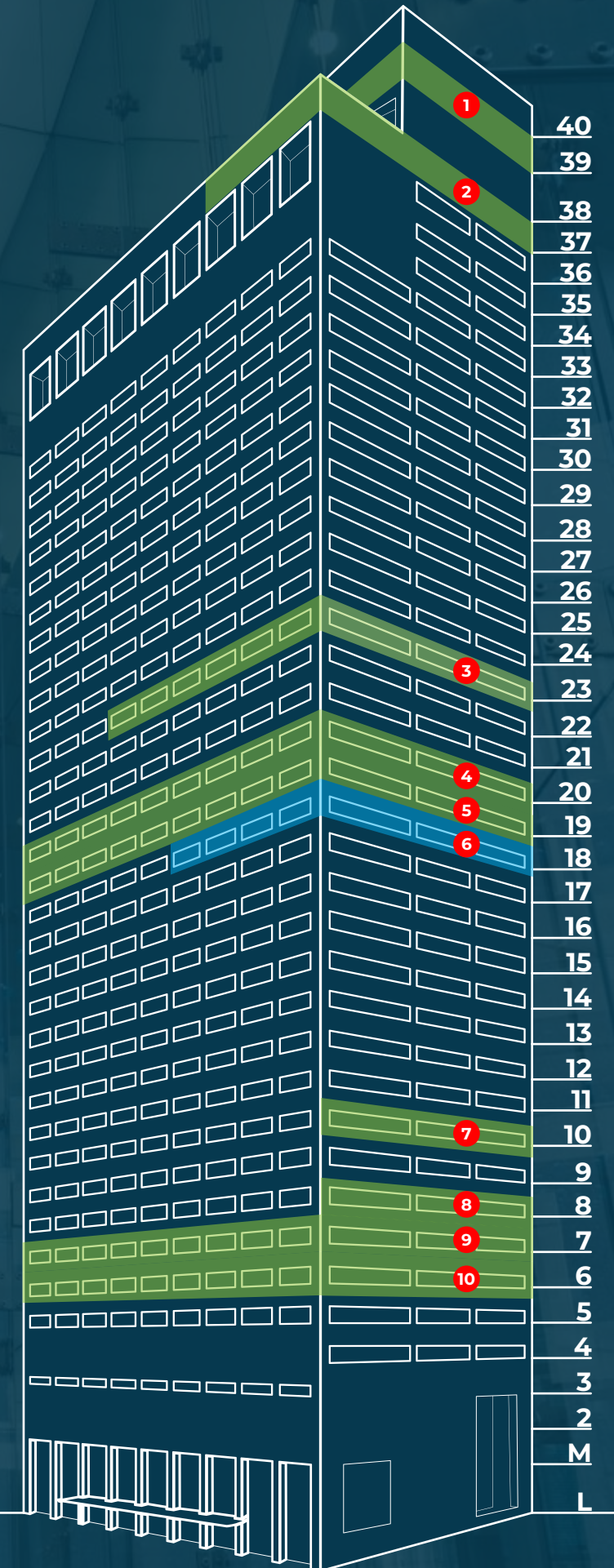


572K Total SF  
40 Floors  
9K-17K SF Floor Plates

### AVAILABILITY

Available Now Available Soon

	Floor	SF	Available Date
1	39	9,123	Now
2	37	10,382	Now
3	23	4,894	5/1/26
		2,100	12/1/25
4	20	3,864	Now
		16,930	Now
5	19	16,930	Now (furniture available)
6	18	4,130	11/1/26
		1,797	11/1/25
7	10	3,376	Now
8	8	9,164	Now
9	7	16,931	Now
10	6	16,782	4/1/26







## TRANSPORTATION HUB

- Located in the heart of Boston's Financial District
- Close proximity to Faneuil Hall and Quincy Market
- Immediate access to MBTA subway lines
- 10-minute walk to North and South Station
- Convenient access to I-93 and Mass Pike, Logan Airport and Storrow Drive



## AMENITIES

- Tenant-only conference center
- 120-Space Underground Parking
- Hubway Bike Sharing Station
- Tenant Exclusive Fitness Center
- Boston News Cafe Food Service
- Citizens Bank Branch
- Bike Storage



# THE CENTER POINT



101  
Eateries



41  
Retailers



11  
Attractions



12  
Hotels

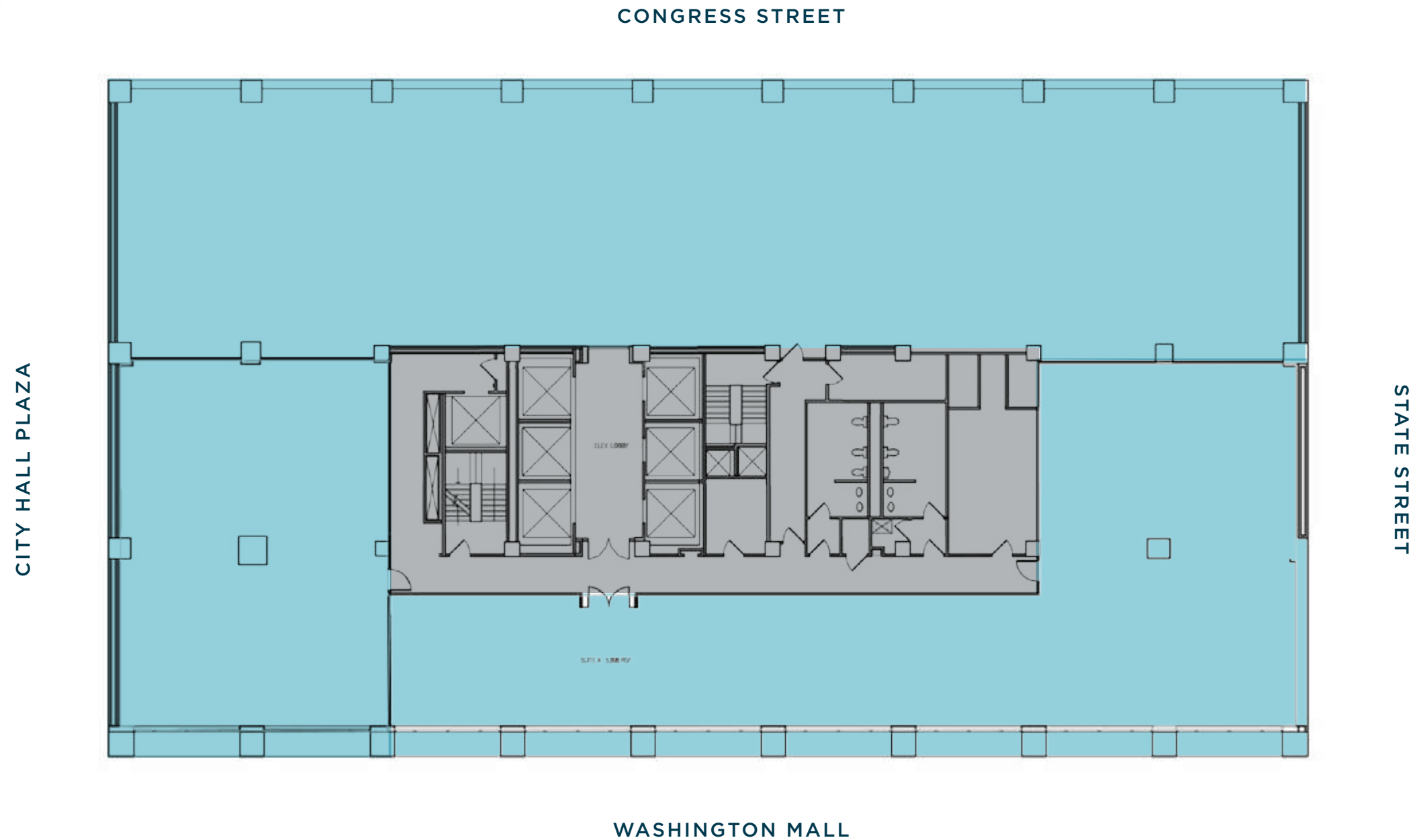


14  
Fitness  
Centers



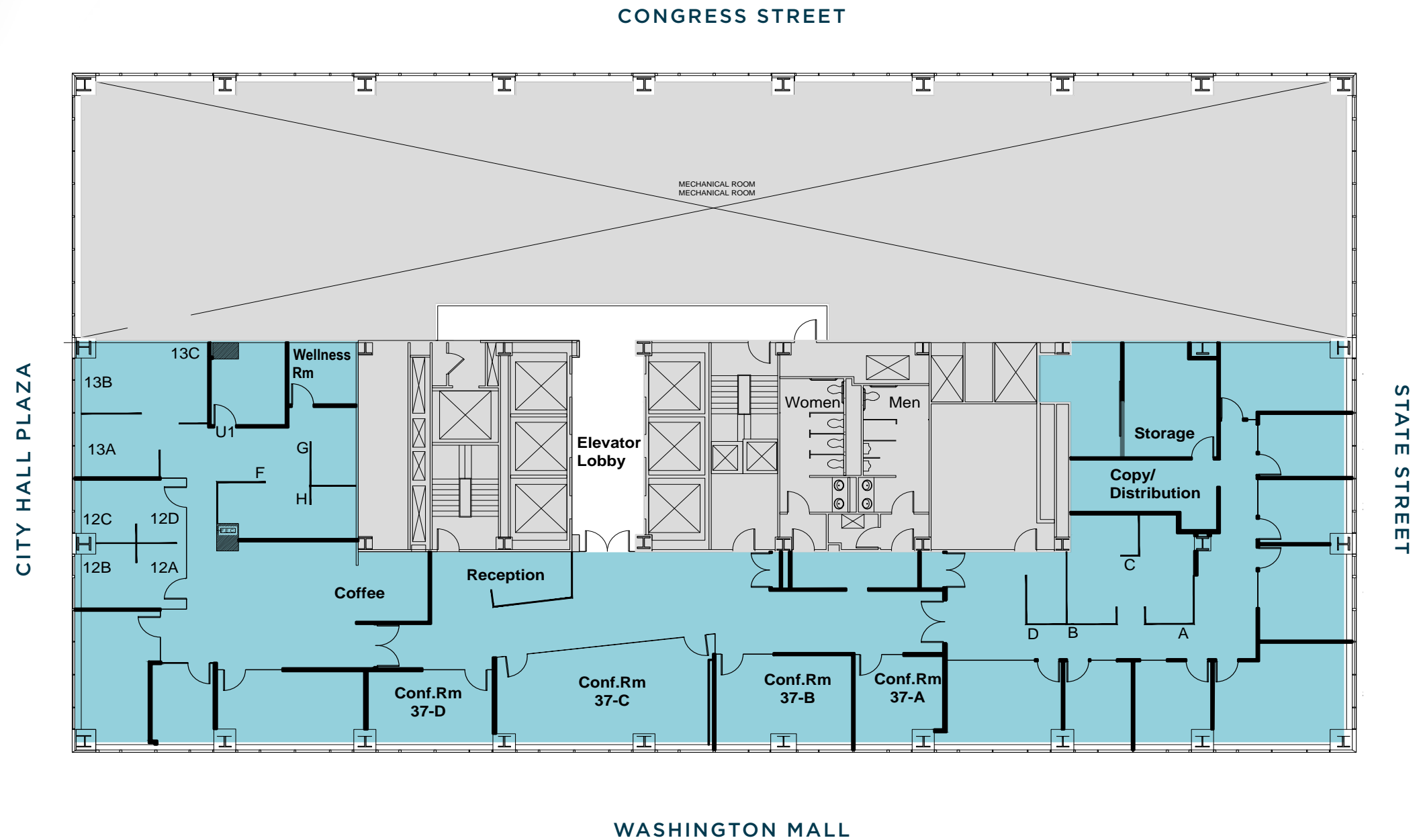


39th Floor: **9,123 SF**





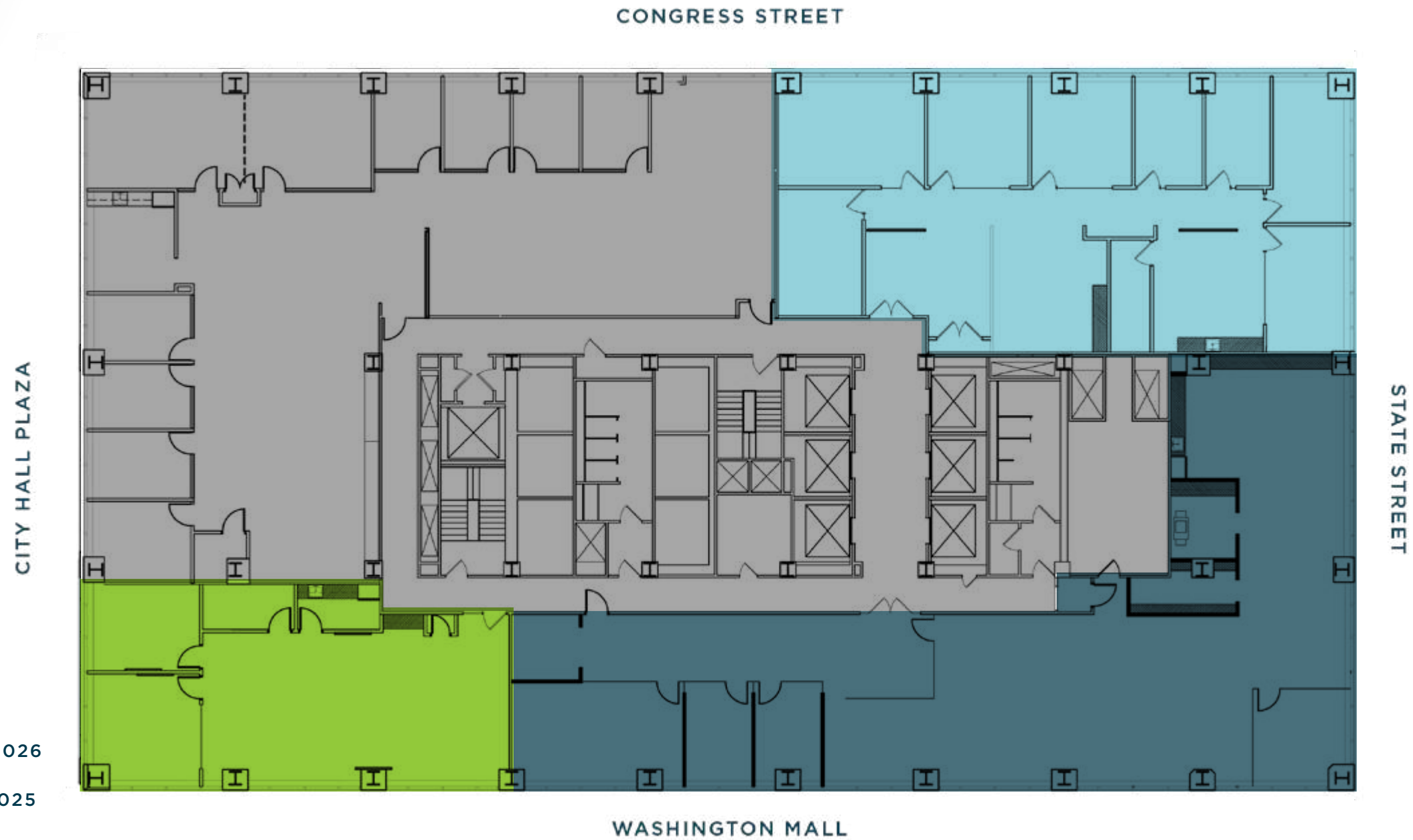
# 37th Floor: 10,382 SF



 AVAILABLE



# 23rd Floor: 10,858 SF





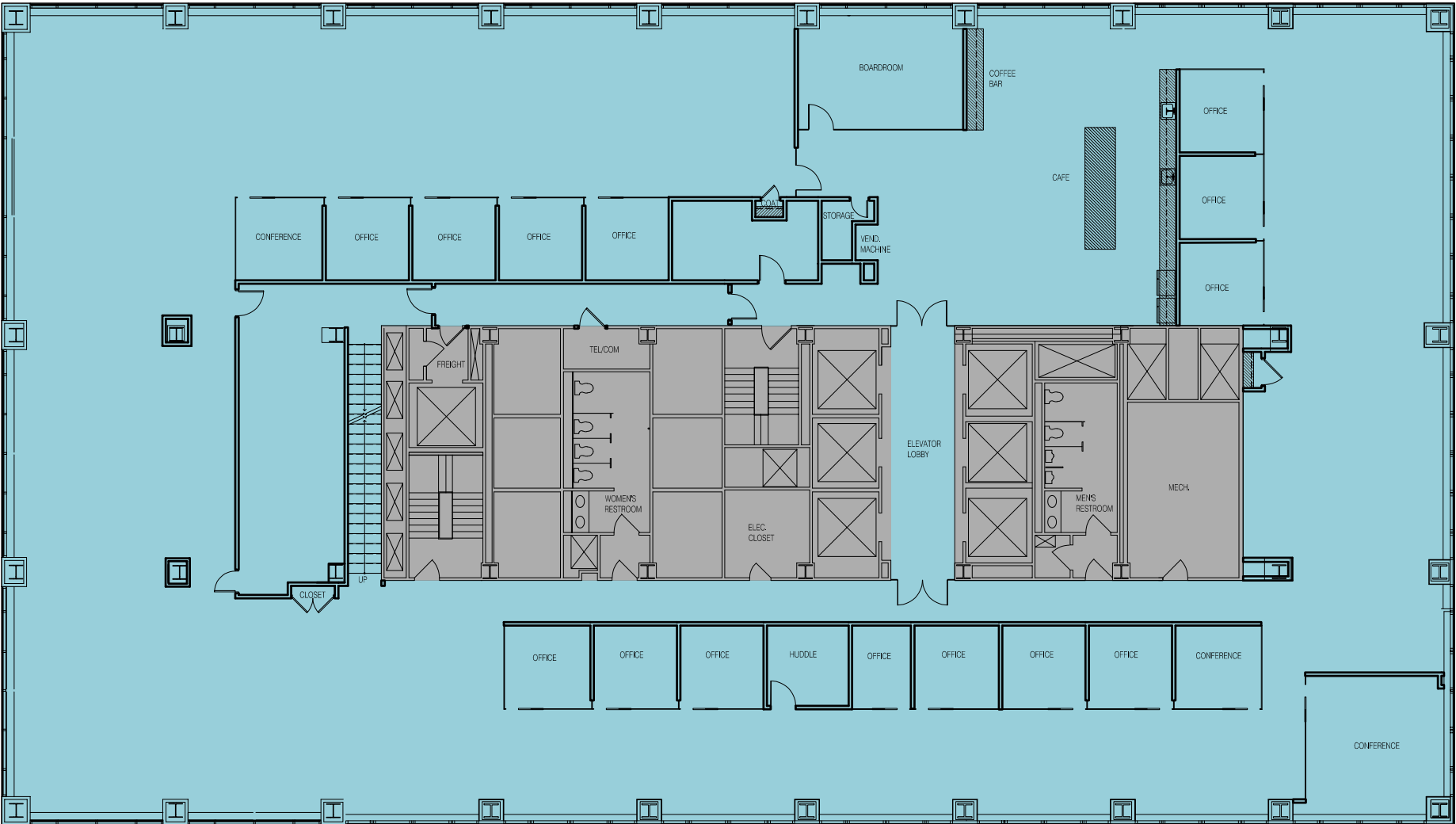
# 20th Floor: 16,930 SF



CITY HALL PLAZA

CONGRESS STREET

STATE STREET



WASHINGTON MALL

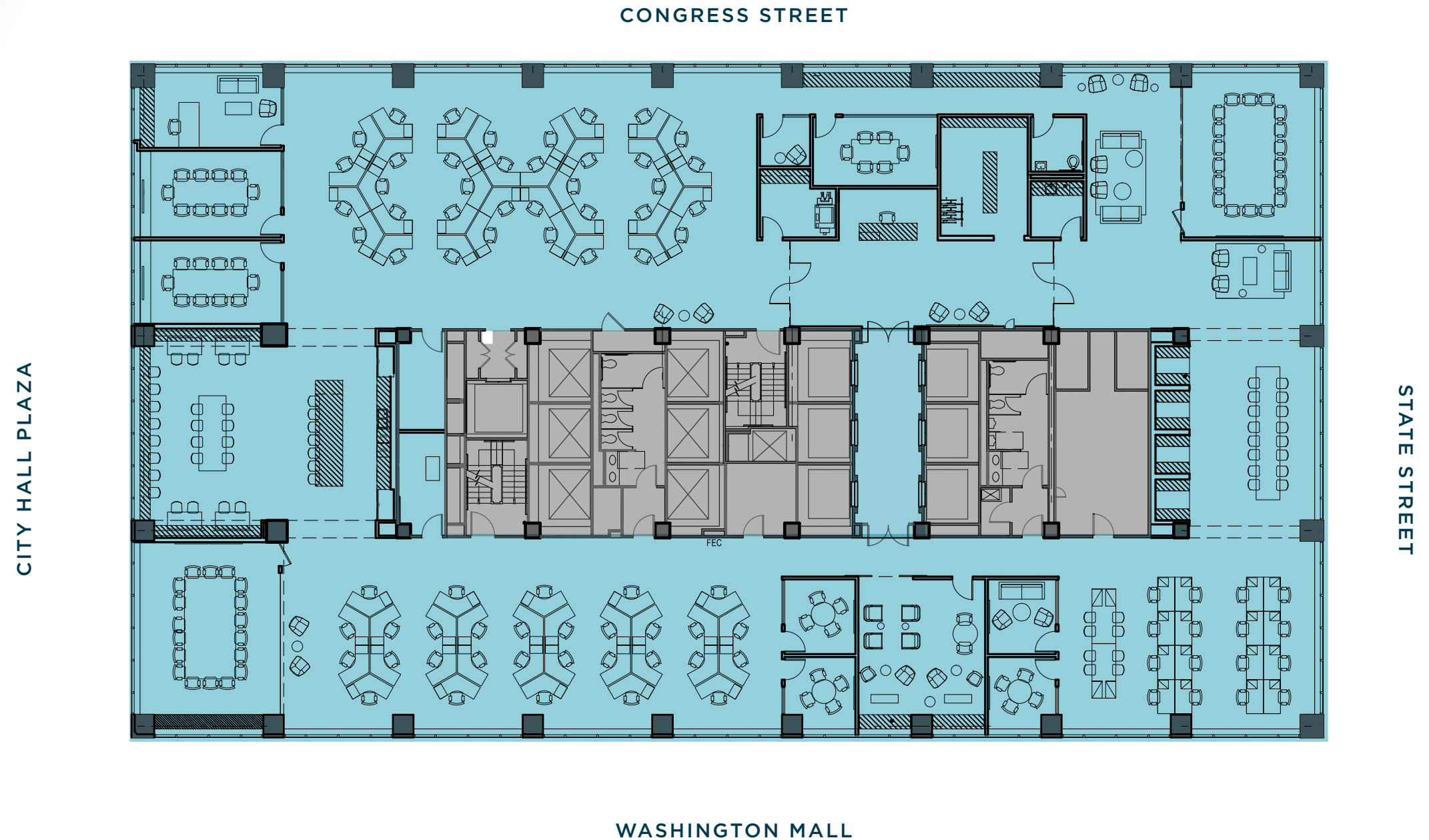
AVAILABLE

**Thomas O'Regan**  
Executive Managing Director  
+1 617 204 4160  
thomas.oregan@cushwake.com

**Mary Brown**  
Director  
+1 617 630 7400  
mary.patalita@cushwake.com



# 19th Floor Available Furnished: **16,930 SF**





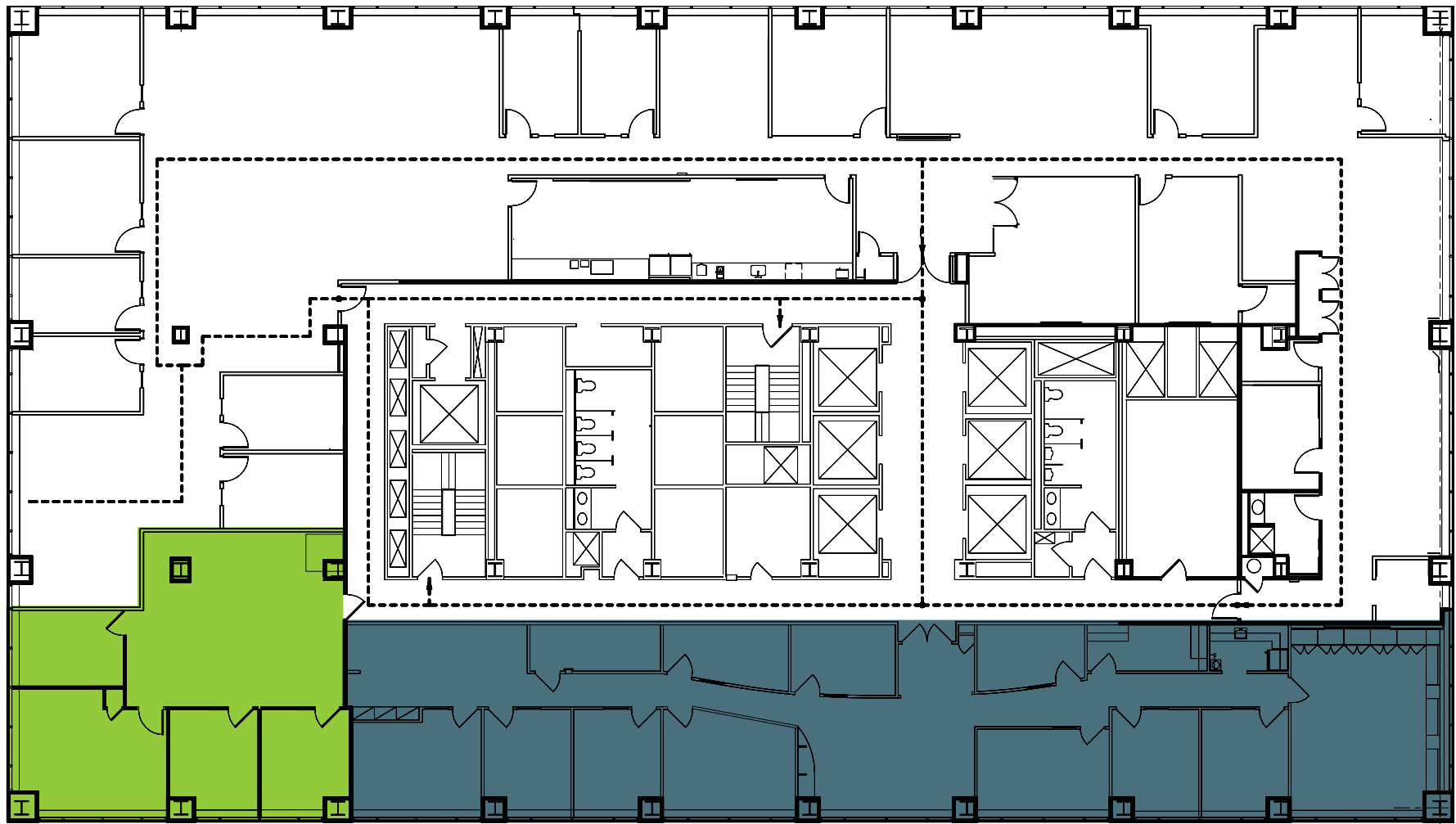
# 18th Floor: 5,927 SF



CITY HALL PLAZA

CONGRESS STREET

STATE STREET



WASHINGTON MALL

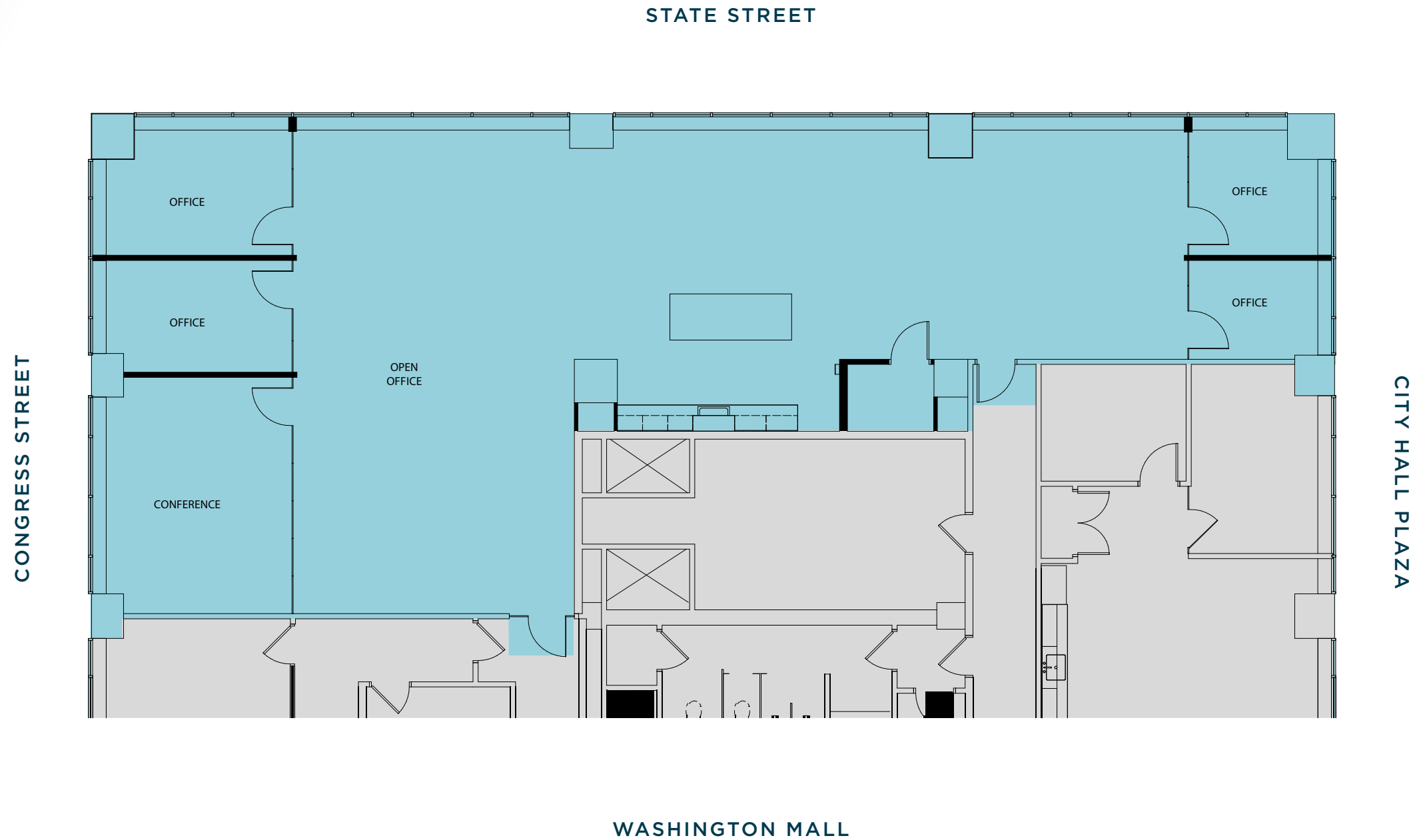
- 4,130 SF AVAILABLE NOVEMBER 1, 2026
- 1,797 SF AVAILABLE NOVEMBER 1, 2025

**Thomas O'Regan**  
Executive Managing Director  
+1 617 204 4160  
thomas.oregan@cushwake.com

**Mary Brown**  
Director  
+1 617 630 7400  
mary.patalita@cushwake.com

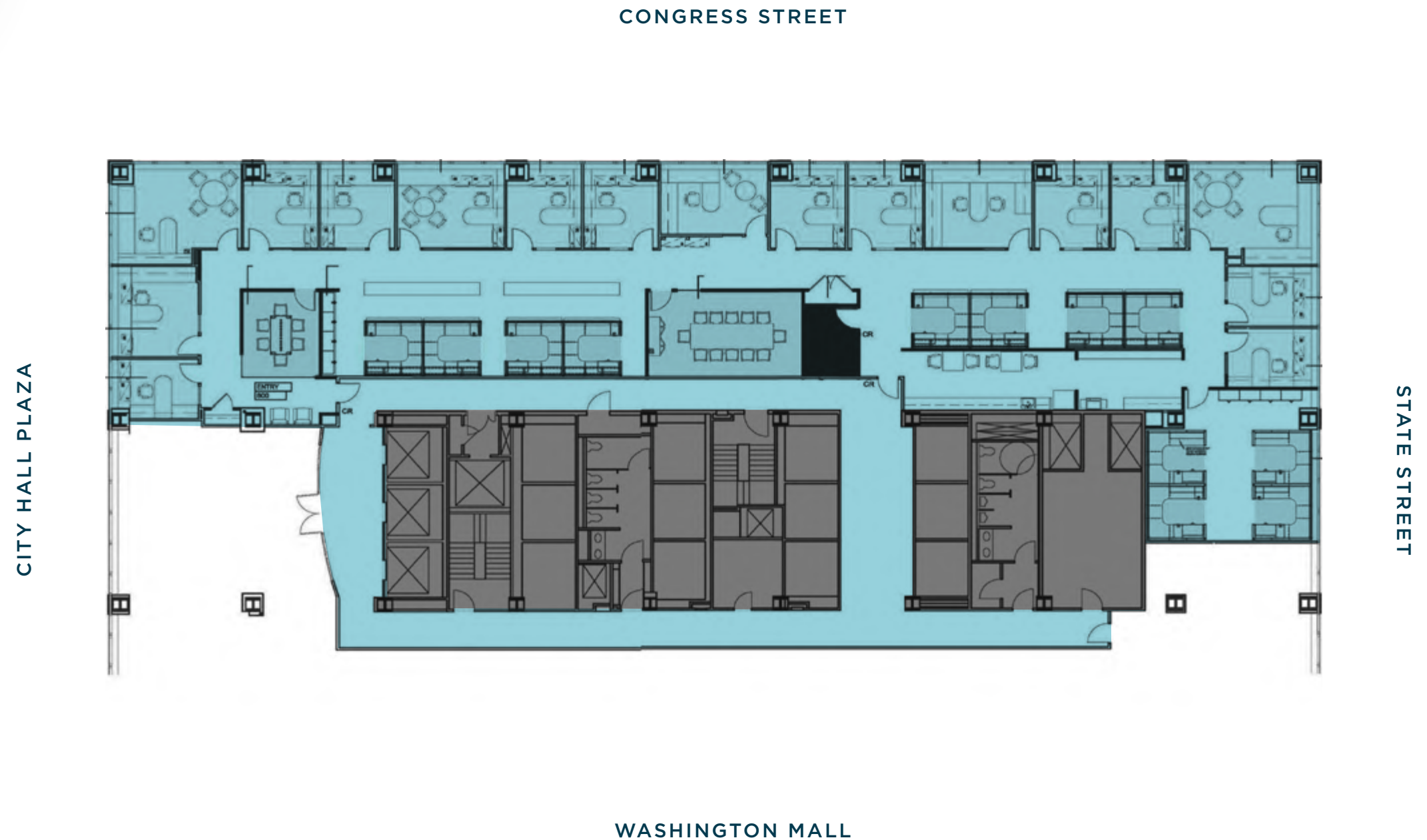


# 10th Floor Spec Suite: **3,376 SF**





8th Floor: **9,164 SF**



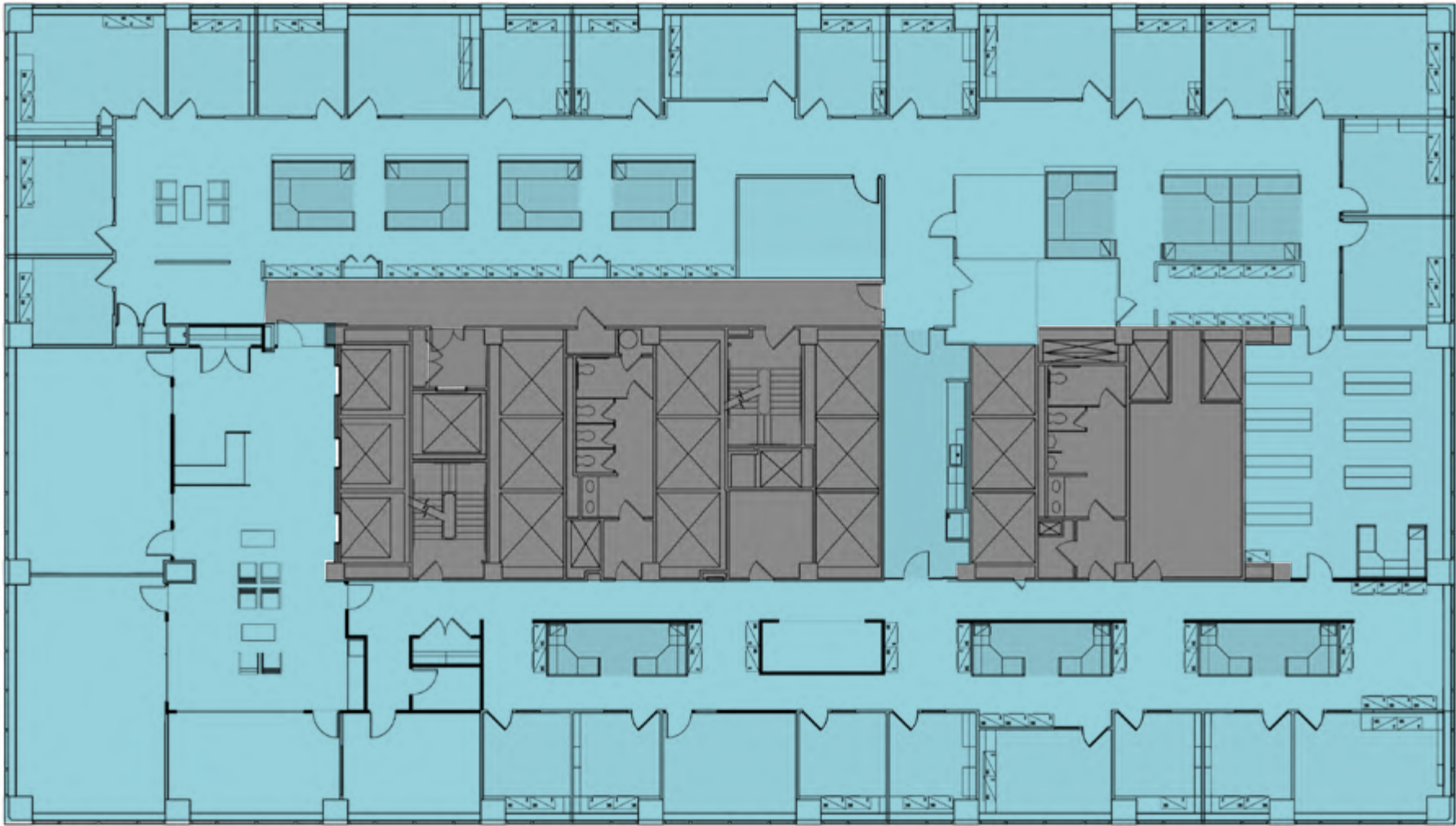


# 7th Floor: 16,931 SF



CITY HALL PLAZA

CONGRESS STREET



STATE STREET

WASHINGTON MALL

 AVAILABLE

**Thomas O'Regan**  
Executive Managing Director  
+1 617 204 4160  
thomas.oregan@cushwake.com

**Mary Brown**  
Director  
+1 617 630 7400  
mary.patalita@cushwake.com



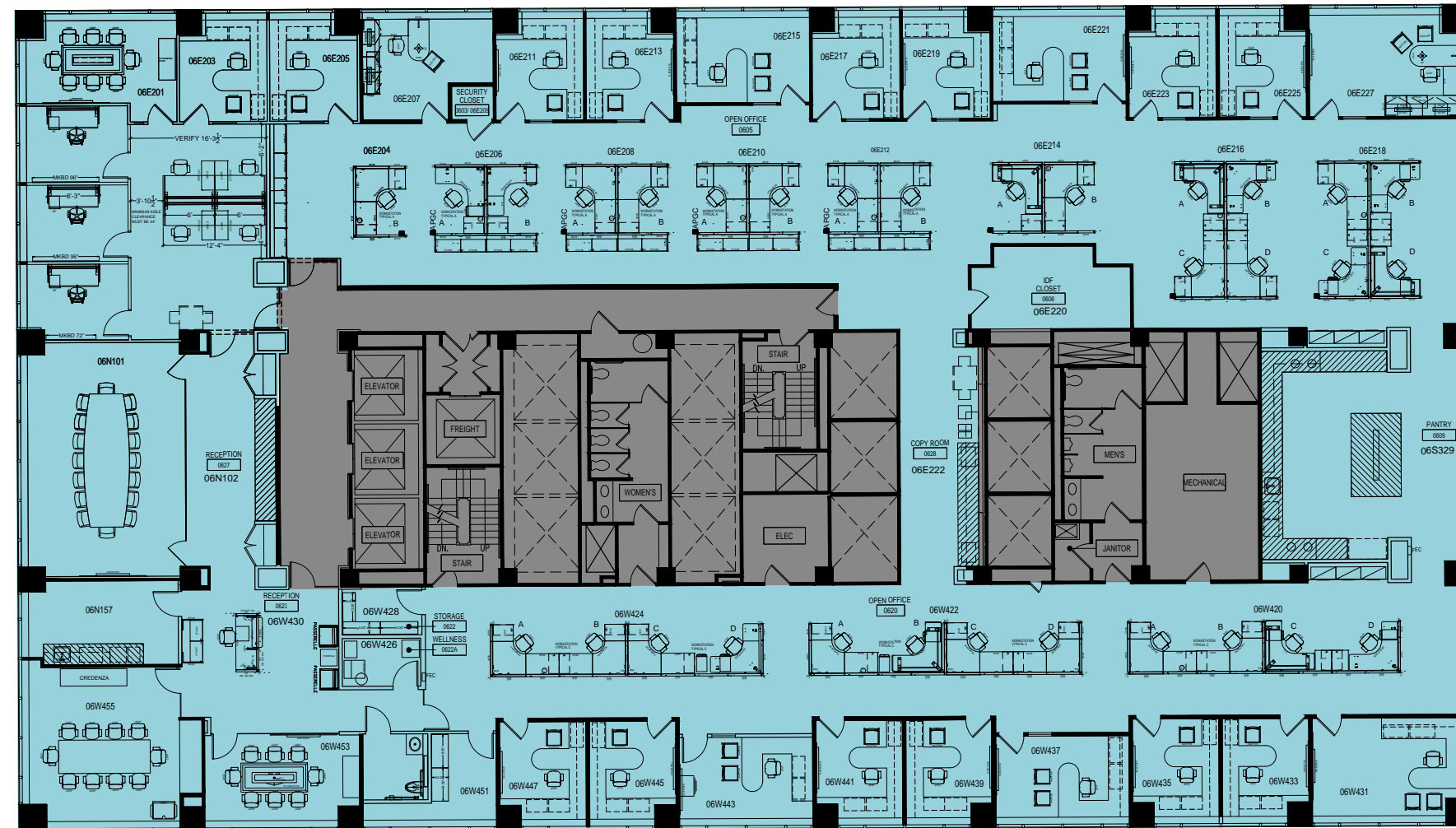
# 6th Floor: 16,782 SF



CITY HALL PLAZA

CONGRESS STREET

STATE STREET



WASHINGTON MALL

AVAILABLE





# In the Heart of Boston's Financial District

For more information, please contact:

**Thomas O'Regan**

Executive Managing Director

+1 617 204 4160

[thomas.oregan@cushwake.com](mailto:thomas.oregan@cushwake.com)

**Mary Brown**

Director

+1 617 630 7400

[mary.patalita@cushwake.com](mailto:mary.patalita@cushwake.com)

**HEITMAN**



**CUSHMAN &  
WAKEFIELD**

©2025 Cushman & Wakefield. All rights reserved. The information contained in this communication is strictly confidential. This information has been obtained from sources believed to be reliable but has not been verified. NO WARRANTY OR REPRESENTATION, EXPRESS OR IMPLIED, IS MADE AS TO THE CONDITION OF THE PROPERTY (OR PROPERTIES) REFERENCED HEREIN OR AS TO THE ACCURACY OR COMPLETENESS OF THE INFORMATION CONTAINED HEREIN, AND SAME IS SUBMITTED SUBJECT TO ERRORS, OMISSIONS, CHANGE OF PRICE, RENTAL OR OTHER CONDITIONS, WITHDRAWAL WITHOUT NOTICE, AND TO ANY SPECIAL LISTING CONDITIONS IMPOSED BY THE PROPERTY OWNER(S). ANY PROJECTIONS, OPINIONS OR ESTIMATES ARE SUBJECT TO UNCERTAINTY AND DO NOT SIGNIFY CURRENT OR FUTURE PROPERTY PERFORMANCE.