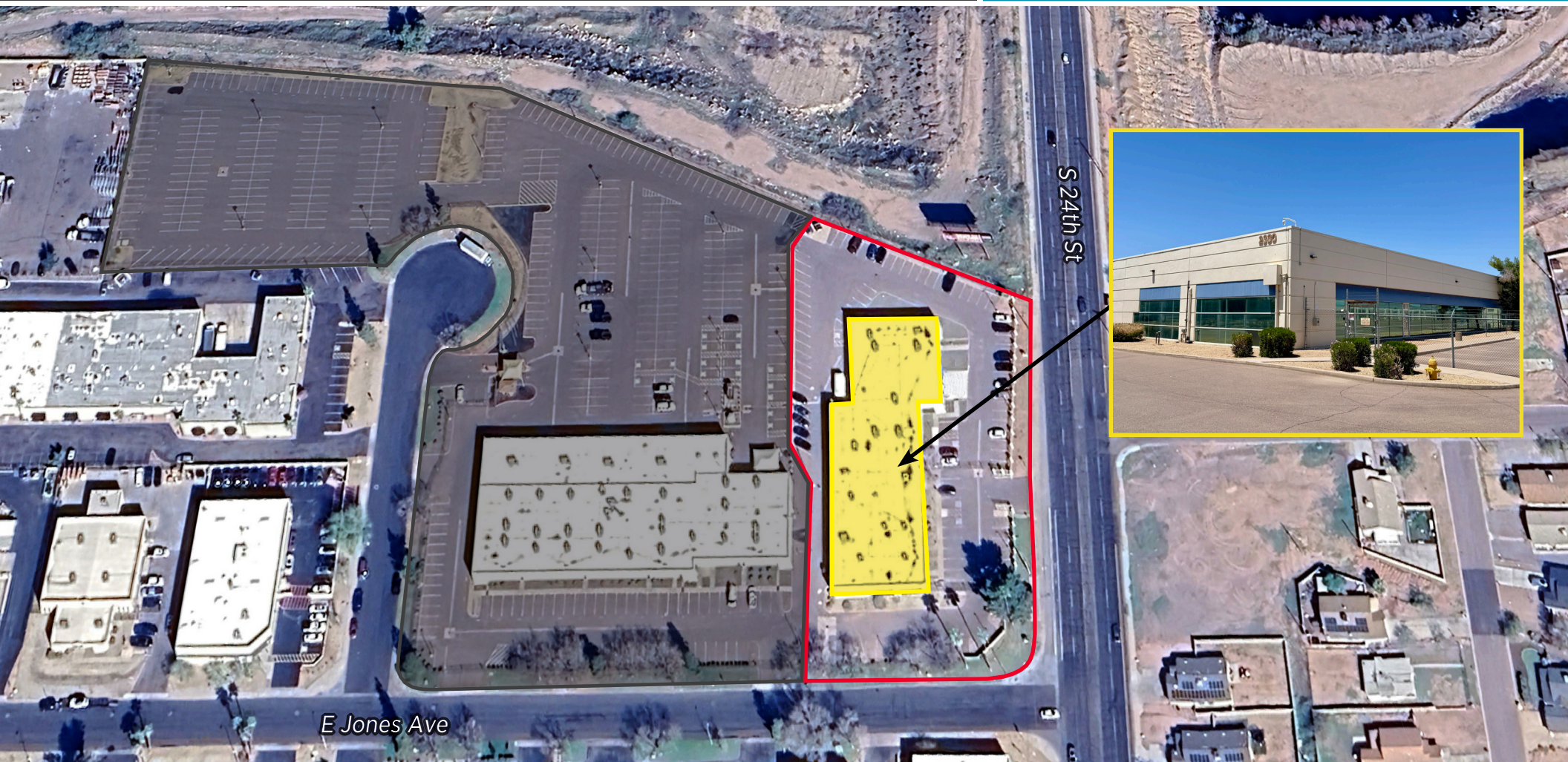


**FOR LEASE** | **±21,167 Square feet**

**IMMEDIATE AVAILABILITY**



**Twenty Fourth Street**  
**Industrial Park**

2330 E JONES AVENUE | PHOENIX, AZ

**LAUREN MONTANA**  
+1 480 695 7541  
lauren.montanta@cushwake.com

**STEVE MARDIAN**  
+1 602 224 4460  
steve.mardian@cushwake.com

2555 East Camelback Road, Suite 400  
Phoenix, Arizona 85016  
T +1 602 954 9000  
cushmanwakefield.com

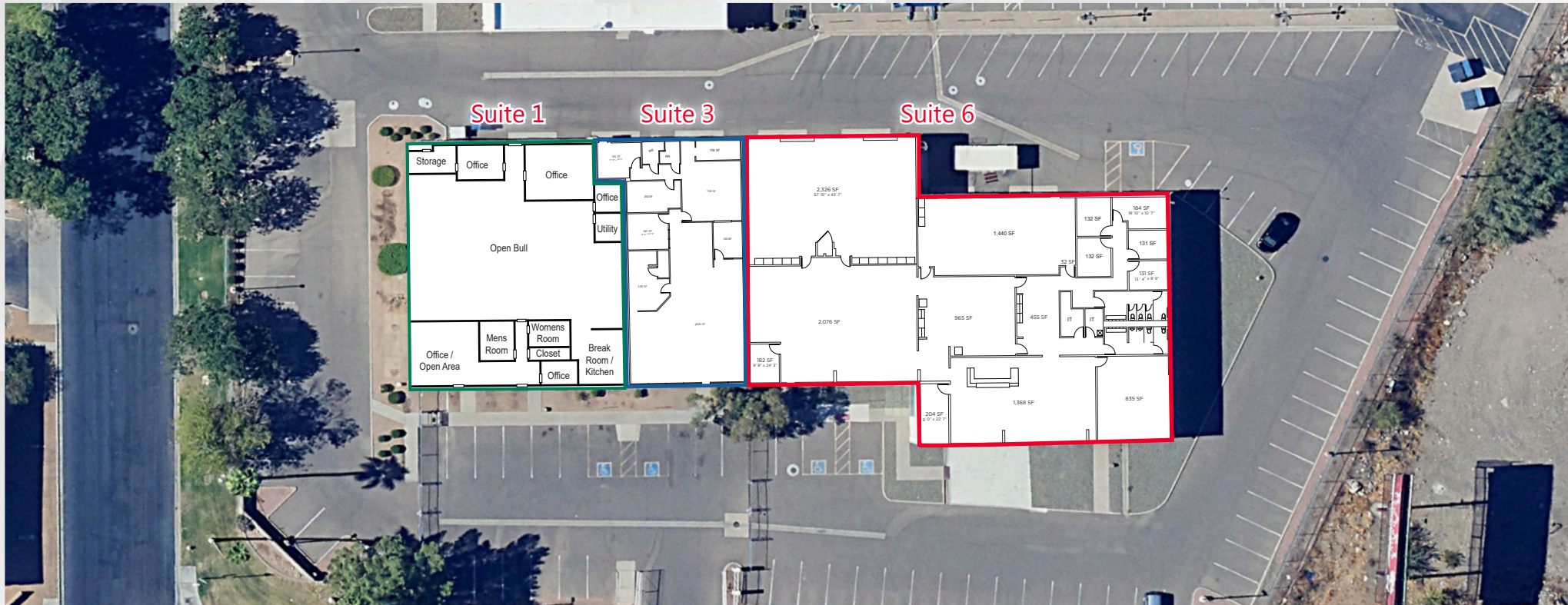




# Twenty Fourth Street Industrial Park

**FOR LEASE | ±21,167 Square feet**

2330 E JONES AVE | PHOENIX, AZ



## BUILDING INFORMATION

Building Size: ±21,167 SF  
Lot Size: ±76,585 SF  
Asking Rate: \$1.35 MG  
Available Spaces  
Suite 1: ±7,010 SF  
Suite 3: ±3,564 SF  
Suite 6: ±10,593 SF

Building Height: 18'  
Zoning: A-1  
Parking Ratio: 4.20/1,000 SF

## BUILDING INFORMATION

- Fully Fenced & Secured
- Potential Yard Area
- Frontage along 24th Street
- Abundant Parking
- ±2 Miles from Sky Harbor International Airport

# Twenty Fourth Street Industrial Park

## LOCATION ACCESS

### FREEWAY PROXIMITIES

- 7.7 Miles to I-10 Interchange
- 17.0 Miles to Loop 101 Interchange
- 10.0 Miles to Loop 202 Freeway

### LOCAL PROXIMITIES

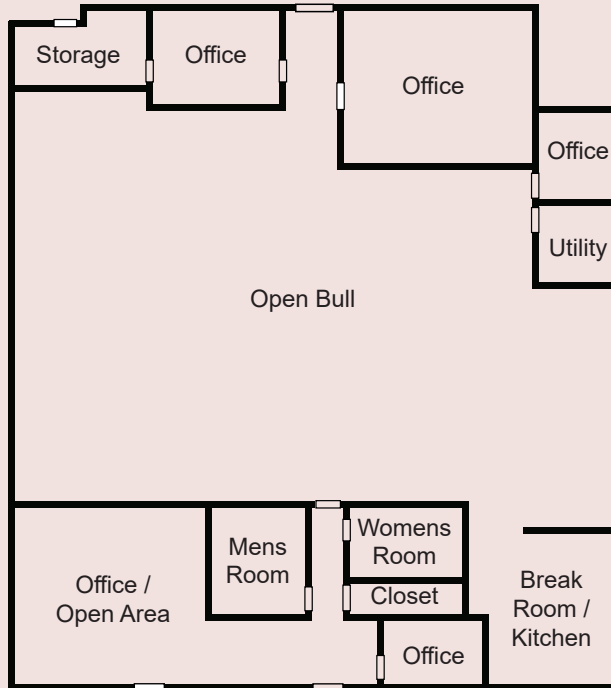
- 26 Minutes to Goodyear Airport
- 6 Minutes to Central Phoenix Business District (Downtown)
- 9 Minutes to Sky Harbor
- 27 Minutes to Deer Valley Airport
- 32 Minutes to TSMC
- 38 Minutes to Mesa Gateway Airport



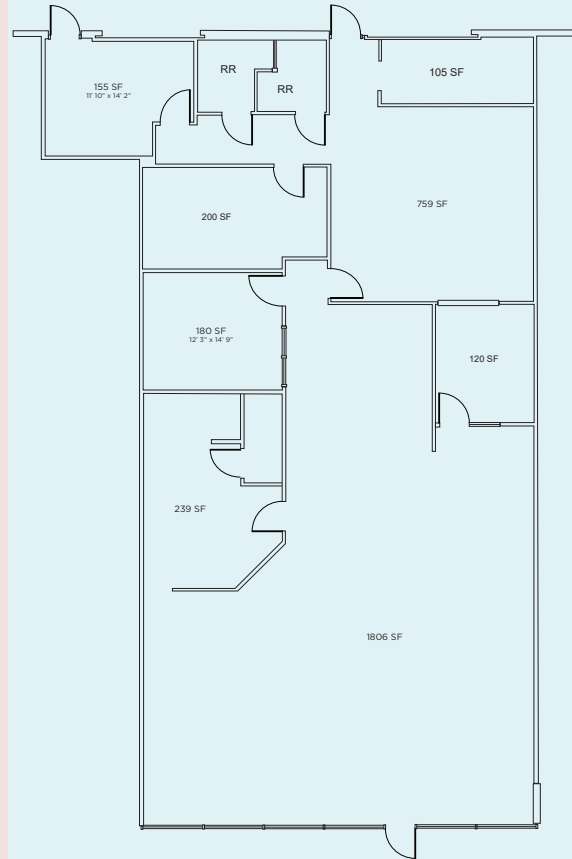
# Twenty Fourth Street Industrial Park

## THREE (3) SUITES AVAILABLE ±7,010 SF | ±3,564 SF | ±10,593 SF

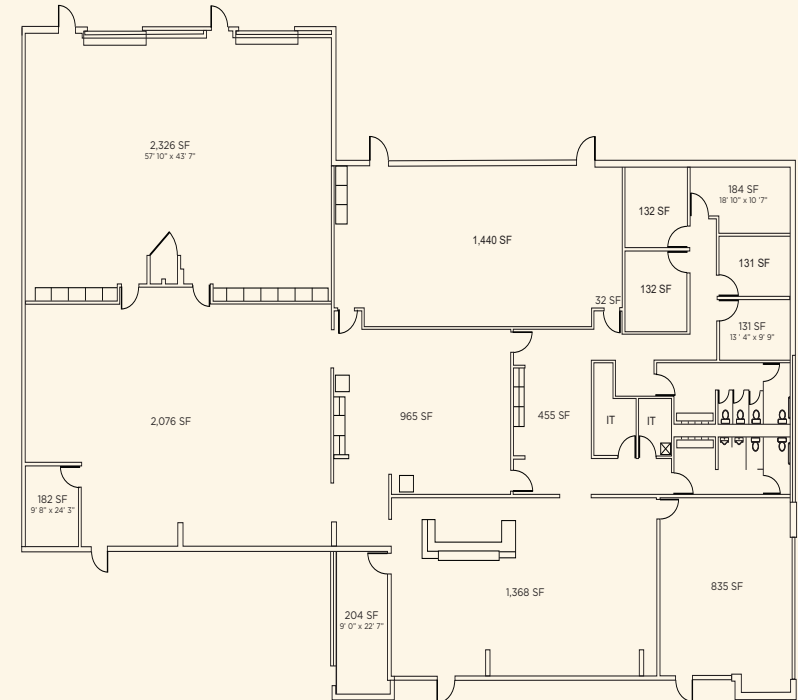
### Suite 1



### Suite 3



### Suite 6



**LAUREN MONTANA**

+1 480 695 7541

lauren.montanta@cushwake.com

**STEVE MARDIAN**

+1 602 224 4460

steve.mardian@cushwake.com

2555 East Camelback Road, Suite 400

Phoenix, Arizona 85016

T +1 602 954 9000

cushmanwakefield.com

