

# VACANT LAND FOR SALE

## HWY #1 - RM RICHER, MB



**Chris Macsymic**  
**Executive Vice President & Principal**

Chris Macsymic Personal Real Estate Corporation  
T 204 928 5019  
C 204 997 6547  
[chris.macsymic@cwstevenson.ca](mailto:chris.macsymic@cwstevenson.ca)

**Ryan Munt**  
**Executive Vice President**

Ryan Munt Personal Real Estate Corporation  
T 204 928 5015  
C 204 298 1905  
[ryan.munt@cwstevenson.ca](mailto:ryan.munt@cwstevenson.ca)







# PROPERTY HIGHLIGHTS

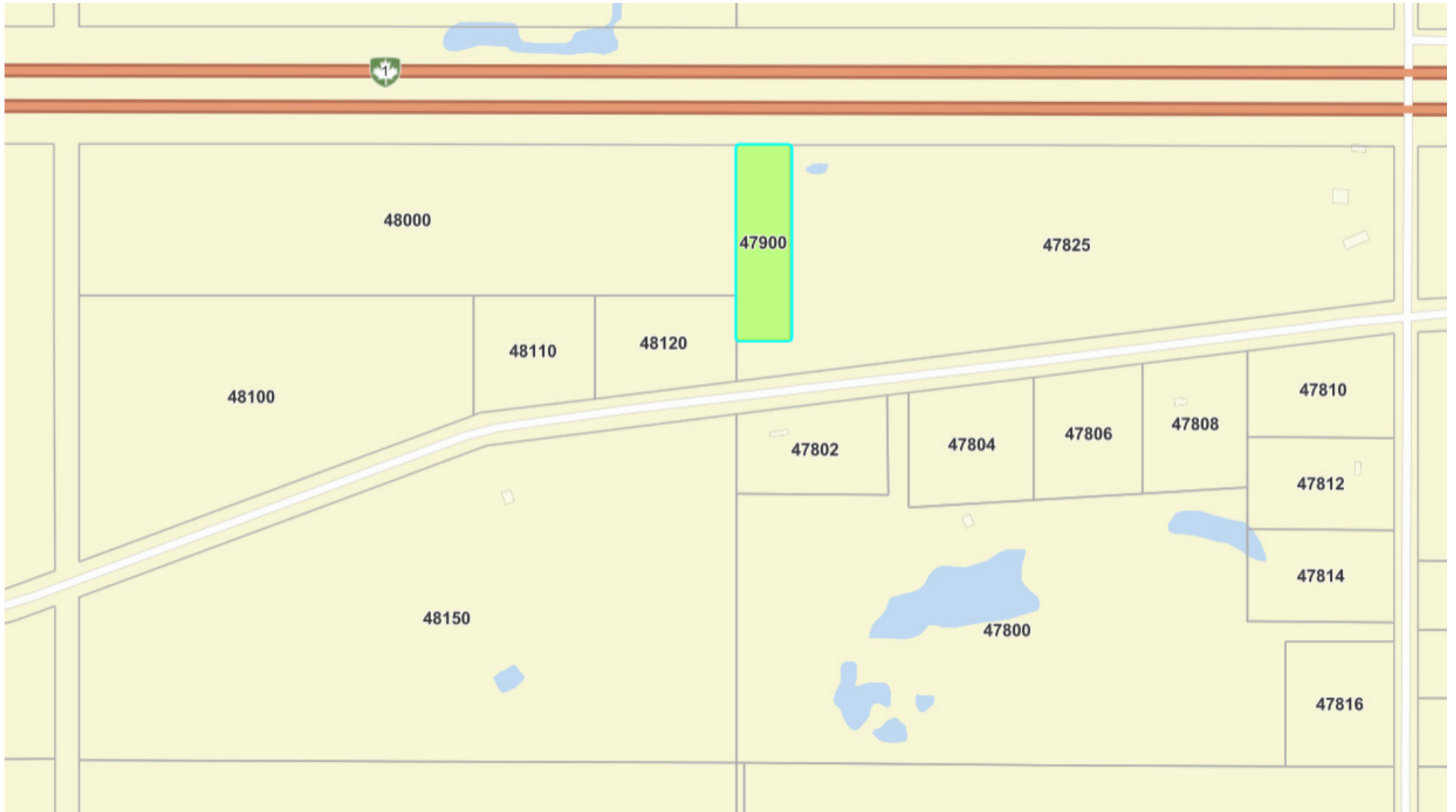
## (+/-) 3.74 TOTAL ACRES

- 3.74 acre parcel available for sale excellent exposure on HWY #1 located east of Richer MB
- Zoning: TBC

**SALE PRICE:** \$200,000

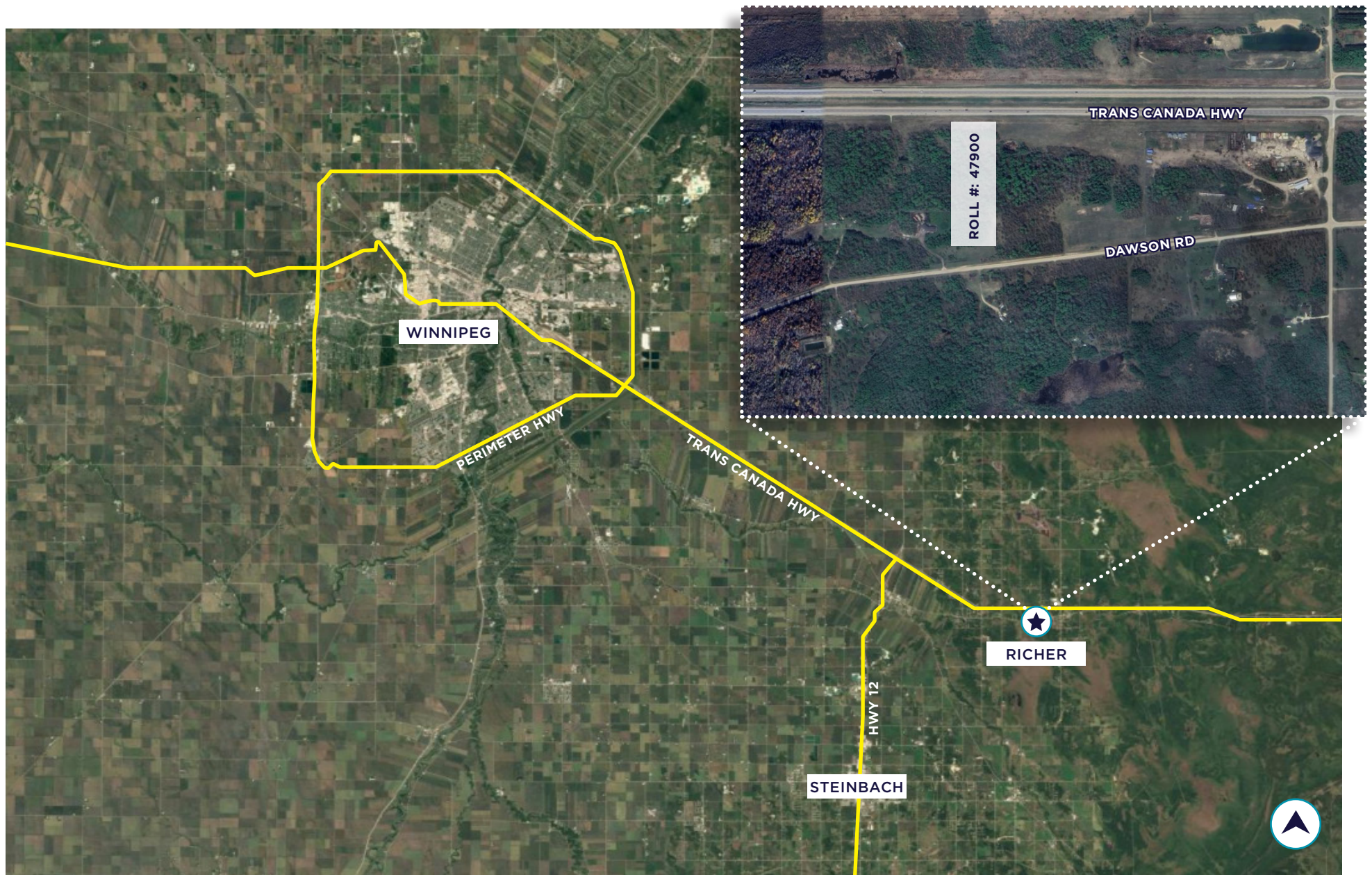
**PROPERTY TAX:** TBC (2025 EST.)





# PARCEL VIEW





# AERIAL MAP





## CONTACT

**Chris Macsymic**  
**Executive Vice President & Principal**

Chris Macsymic Personal Real Estate Corporation  
T 204 928 5019  
C 204 997 6547  
[chris.macsymic@cwstevenson.ca](mailto:chris.macsymic@cwstevenson.ca)

**Ryan Munt**  
**Executive Vice President**

Ryan Munt Personal Real Estate Corporation  
T 204 928 5015  
C 204 298 1905  
[ryan.munt@cwstevenson.ca](mailto:ryan.munt@cwstevenson.ca)



Independently Owned and Operated / A Member of the Cushman & Wakefield Alliance ©2025 Cushman & Wakefield. All rights reserved. The information contained in this communication is strictly confidential. This information has been obtained from sources believed to be reliable but has not been verified. NO WARRANTY OR REPRESENTATION, EXPRESS OR IMPLIED, IS MADE AS TO THE CONDITION OF THE PROPERTY (OR PROPERTIES) REFERENCED HEREIN OR AS TO THE ACCURACY OR COMPLETENESS OF THE INFORMATION CONTAINED HEREIN, AND SAME IS SUBMITTED SUBJECT TO ERRORS, OMISSIONS, CHANGE OF PRICE, RENTAL OR OTHER CONDITIONS, WITHDRAWAL WITHOUT NOTICE, AND TO ANY SPECIAL LISTING CONDITIONS IMPOSED BY THE PROPERTY OWNER(S). ANY PROJECTIONS, OPINIONS OR ESTIMATES ARE SUBJECT TO UNCERTAINTY AND DO NOT SIGNIFY CURRENT OR FUTURE PROPERTY PERFORMANCE.