



**CUSHMAN &
WAKEFIELD**

OFFICE SUBLEASE

1100 Circle 75

1100 Circle 75 Parkway, Atlanta, GA 30339



6,682 RSF

**AVAILABLE ON
9th FLOOR**

Inquire for Rate

**FULL-SERVICE
GROSS RATE**

10/31/2023

**SUBLEASE
EXPIRATION**

4.0/1,000 SF

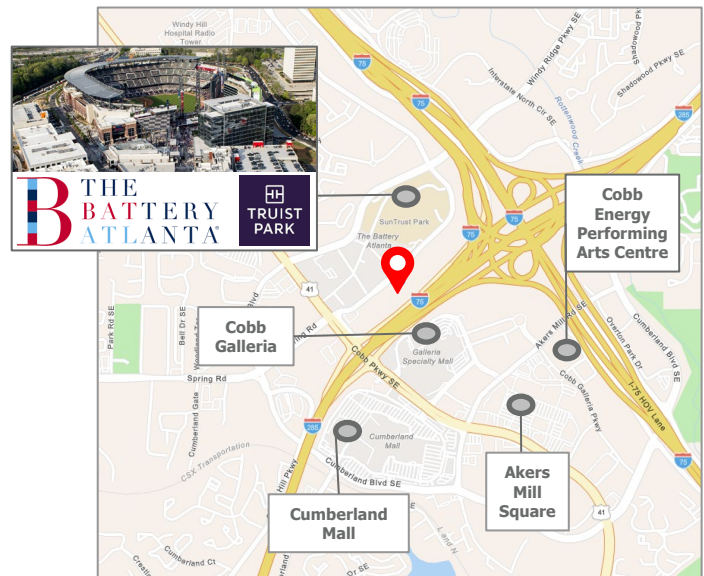
**SURFACE/COVERED
FREE PARKING**

Space Features & Highlights

- Excellent views Truist Park
- Elevator lobby exposure
- Available immediately
- Move-in ready
- Furniture available

Excellent Amenities & Location

- Building amenities include café, conference room and fitness facility
- Excellent visibility and access along I-285 and I-75
- Walkable to abundant restaurants, retail and amenities, including The Battery, Truist Park, Cumberland Mall and The Galleria



APRIL PARRISH
Executive Director
(404) 682 3413
april.parrish@cushwake.com
License #301359

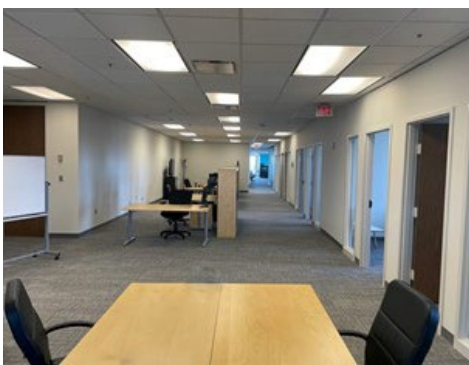
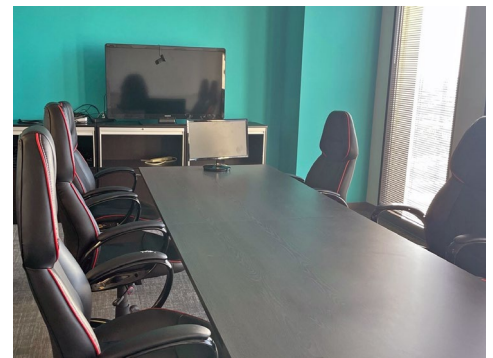
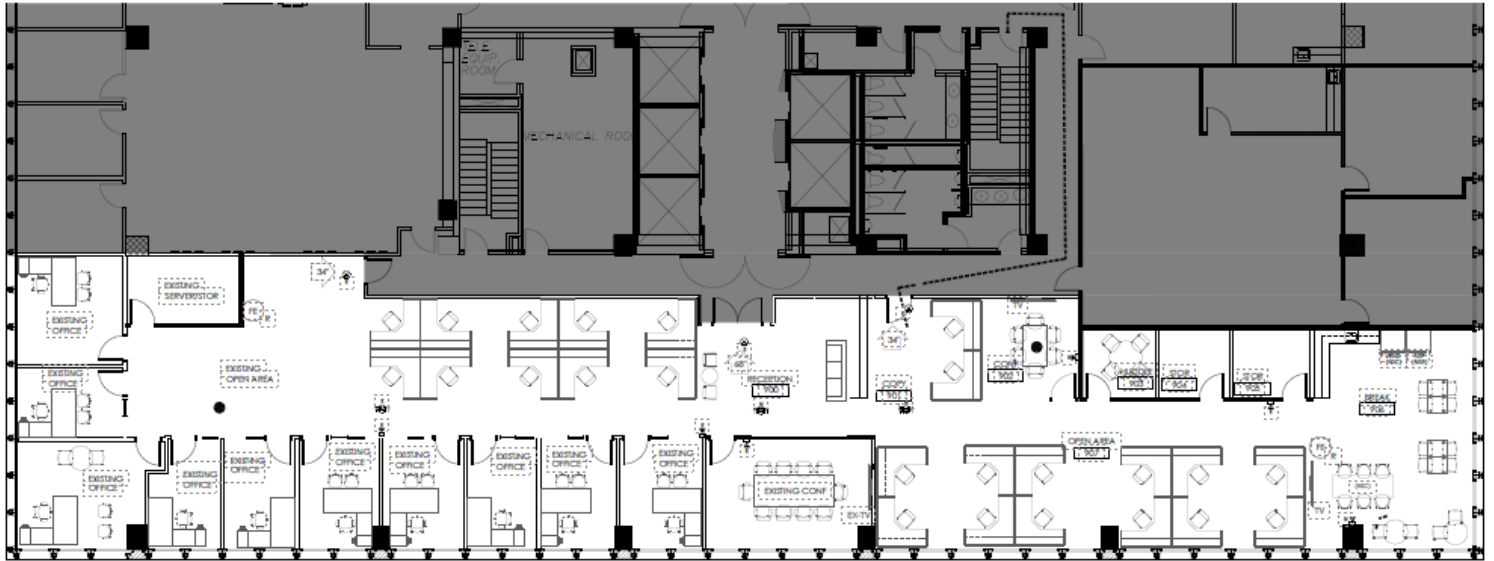
ERIN SMITH
Senior Director
(404) 682 3444
erin.smith@cushwake.com
License #337500

CUSHMAN & WAKEFIELD, INC.
1180 Peachtree Street, NE, Suite 3100
Atlanta, Georgia 30309
www.cushmanwakefield.com

The depiction in the included photograph of any person, entity, sign, logo or property, other than Cushman & Wakefield's (C&W) client and the property offered by C&W, is incidental only, and is not intended to connote any affiliation, connection, association, sponsorship or approval by or between that which is incidentally depicted and C&W or its client. This listing shall not be deemed an offer to lease, sublease or sell such property, and, in the event of any transaction for such property, no commission shall be earned by or payable to any cooperating broker except if otherwise provided pursuant to the express terms, rates and conditions of C&W's agreement with its principal, if, as and when such commission (if any) is actually received from such principal. (A copy of the rates and conditions referred to above with respect to this property is available upon request.)

Suite 900 – 6,682 RSF

Furniture plan is not 100% accurate



APRIL PARRISH
Executive Director
(404) 682 3413
april.parrish@cushwake.com
License #301359

ERIN SMITH
Senior Director
(404) 682 3444
erin.smith@cushwake.com
License #337500

CUSHMAN & WAKEFIELD, INC.
1180 Peachtree Street, NE, Suite 3100
Atlanta, Georgia 30309
www.cushmanwakefield.com

The depiction in the included photograph of any person, entity, sign, logo or property, other than Cushman & Wakefield's (C&W) client and the property offered by C&W, is incidental only, and is not intended to connote any affiliation, connection, association, sponsorship or approval by or between that which is incidentally depicted and C&W or its client. This listing shall not be deemed an offer to lease, sublease or sell such property; and, in the event of any transaction for such property, no commission shall be earned by or payable to any cooperating broker except if otherwise provided pursuant to the express terms, rates and conditions of C&W's agreement with its principal, if, as and when such commission (if any) is actually received from such principal. (A copy of the rates and conditions referred to above with respect to this property is available upon request.)