

FOR SALE  
**33,150 SF ON 12 ACRES**



7400 FLOYDSBURG ROAD  
**CRESTWOOD, KY 40014**

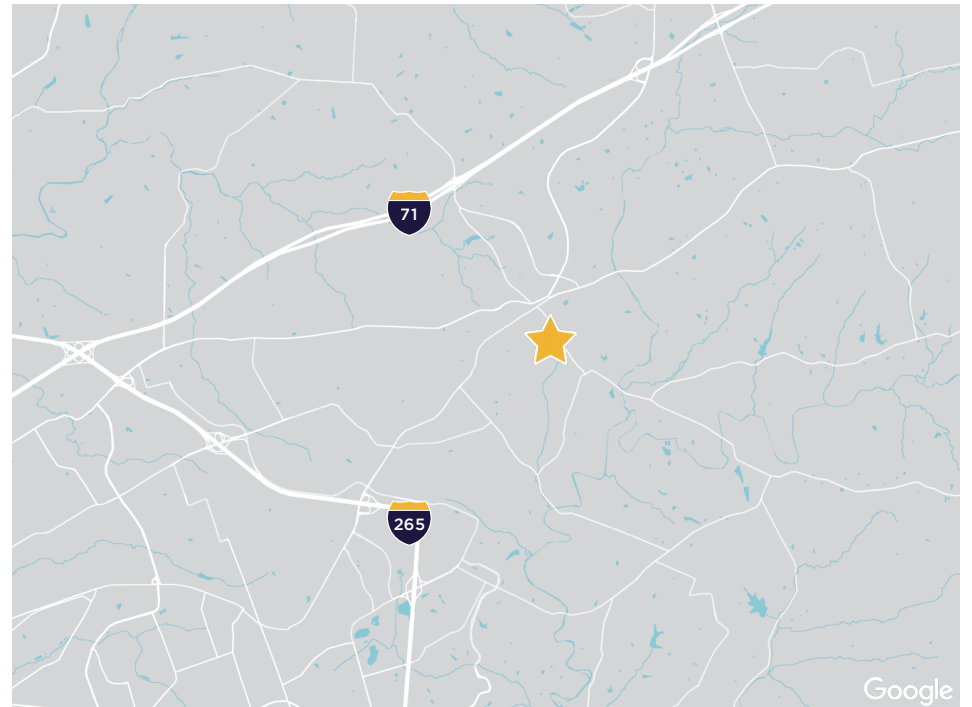


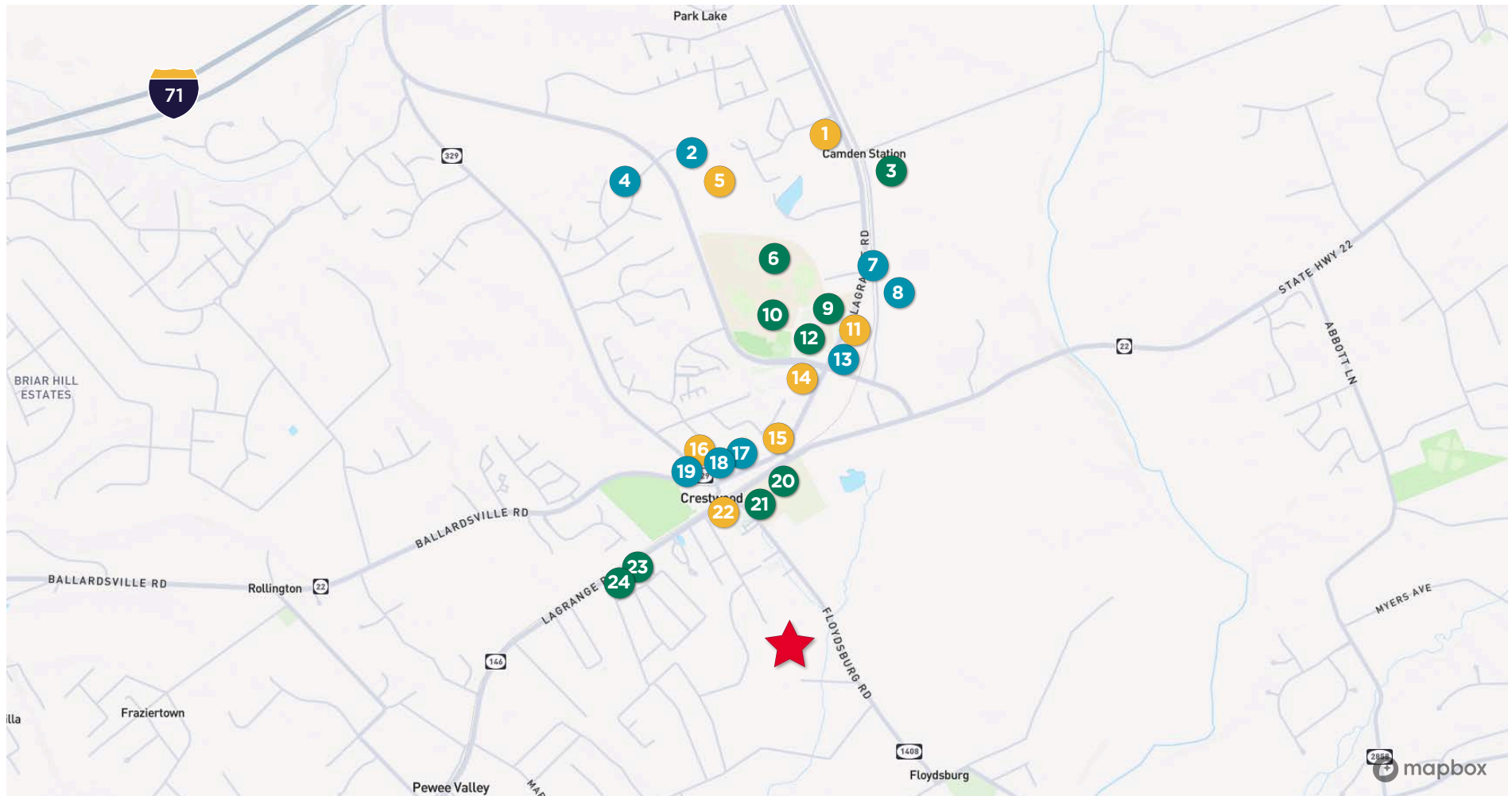
# PROPERTY HIGHLIGHTS

Class A office building available in Crestwood, Kentucky! This property is 33,150 square feet on two floors with beautiful interior finishes. There are office spaces located throughout the building in addition to meeting rooms and a large event space in the back section of the building.

This property is located just south of Crestwood's city center and commercial developments, yet they are conveniently located nearby. Additionally, larger traffic arteries such as the expanding I-71 provide a convenient commute to Louisville.

Building Size:	33,150 sf
Acreage:	12.09 acres
Year Built:	2000
Parking:	62 surface spaces; potential to expand
Zoning:	R-2
Building Class:	Class A





### Restaurants

- 2. Taco Bell
- 4. Gustavo's
- 7. Domino's
- 8. 3<sup>rd</sup> Turn Brewery
- 13. McDonald's
- 17. El Nopal
- 18. Papa Johns
- 19. Dairy Queen

### Retail/Services

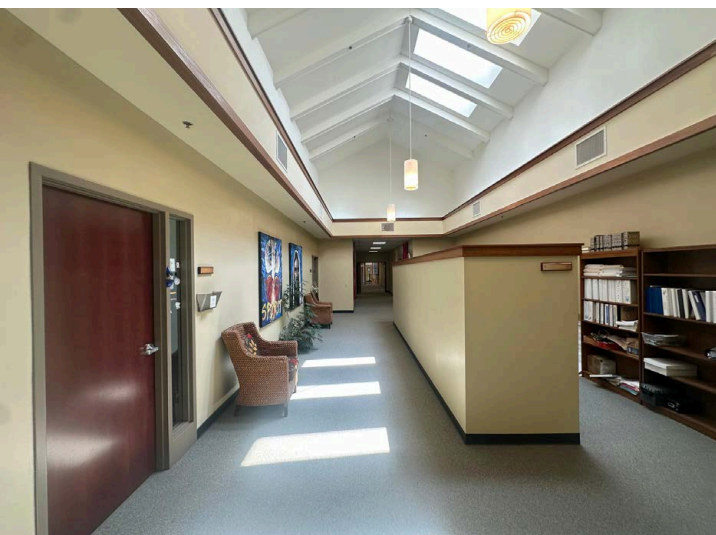
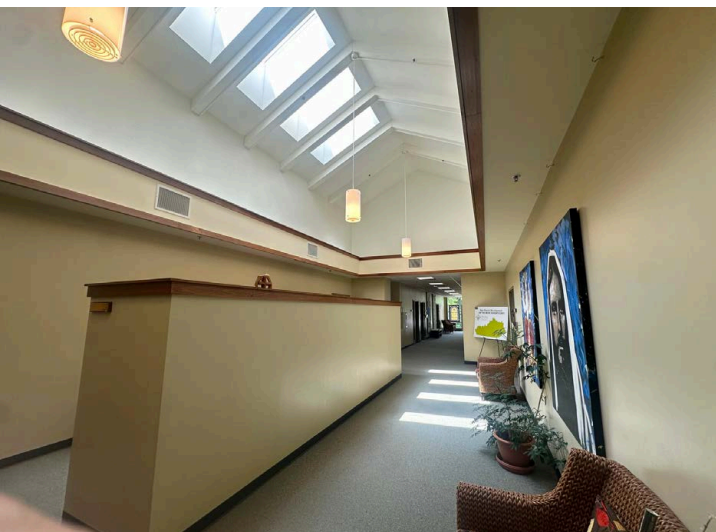
- 1. Dollar General
- 5. Walmart
- 11. Goodwill
- 14. CVS
- 15. Circle K
- 16. Dollar Tree
- 22. PNC

### Community/Other

- 3. Yew Dell Botanical Gardens
- 6. Kenwood Station Elementary
- 9. Camden Station Elementary
- 10. South Oldham High School
- 12. South Oldham Middle School
- 20. Crestwood Elementary
- 21. Oldham Co. Schools Art Center
- 23. South Oldham Government Center
- 24. Oldham Co. Public Library

# PROPERTY LOCATION







# CONTACT INFORMATION

## **BRENT DOLEN, SIOR, CCIM**

**Senior Director**

[bdolen@commercialkentucky.com](mailto:bdolen@commercialkentucky.com)

+1 502 719 3262

## **SAM ENGLISH, CFA**

**Senior Director**

[senglish@commercialkentucky.com](mailto:senglish@commercialkentucky.com)

+1 502 719 3244



©2025 Cushman & Wakefield. All rights reserved. The information contained in this communication is strictly confidential. This information has been obtained from sources believed to be reliable but has not been verified. NO WARRANTY OR REPRESENTATION, EXPRESS OR IMPLIED, IS MADE AS TO THE CONDITION OF THE PROPERTY (OR PROPERTIES) REFERENCED HEREIN OR AS TO THE ACCURACY OR COMPLETENESS OF THE INFORMATION CONTAINED HEREIN, AND SAME IS SUBMITTED SUBJECT TO ERRORS, OMISSIONS, CHANGE OF PRICE, RENTAL OR OTHER CONDITIONS, WITHDRAWAL WITHOUT NOTICE, AND TO ANY SPECIAL LISTING CONDITIONS IMPOSED BY THE PROPERTY OWNER(S). ANY PROJECTIONS, OPINIONS OR ESTIMATES ARE SUBJECT TO UNCERTAINTY AND DO NOT SIGNIFY CURRENT OR FUTURE PROPERTY PERFORMANCE.

Independently Owned & Operated / A Member of the Cushman & Wakefield Alliance