

THE COLLECTION

AT SABAL PARK

BUILDING HIGHLIGHTS

- Full Building Available
- High Visibility Building Crown Signage Available
- Efficient Floor Plate Designs
- Convenient I-75 Corridor Location
- Former Classroom Build-Out
- Ample Surface Parking
- Nearby Hotels & Restaurants
- Pylon Signage Facing MLK
- Rooftop Terraces

REGISTRY II



9950 Princess Palm Ave, Tampa, FL

MERCEDES ANGELL
Managing Director
+1 813 204 5344
mercedes.angell@cushwake.com

ASHLEY N. JAMES
Senior Associate
+1 813 349 8376
ashley.n.james@cushwake.com

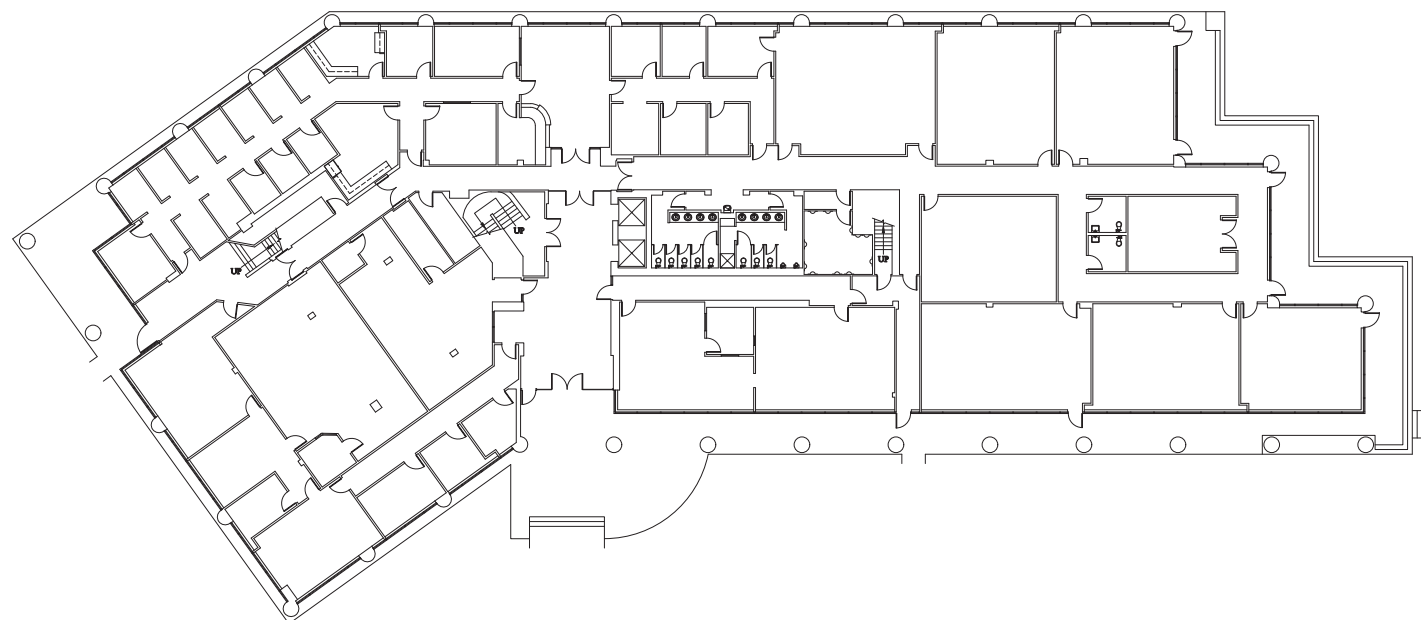
MARISSA ANGELL
Associate
+1 813 367 6437
marissa.angell@cushwake.com



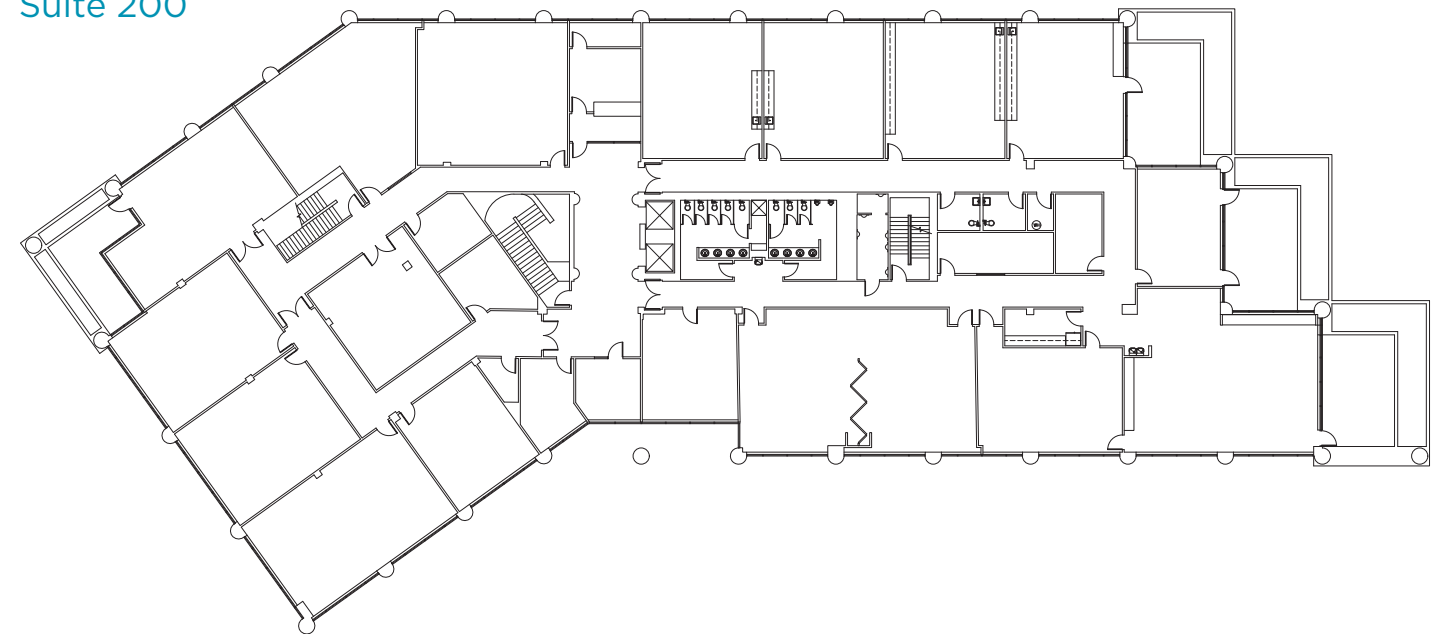
AVAILABILITIES

SUITE	TOTAL SF	MAX. CONT.	AVAILABLE	LEASE RATE
100	27,270	+/- 42,000	4/1/2025	\$24.50 / RSF FS
200	14,730	+/- 42,000	4/1/2025	\$24.50 / RSF FS
310	4,359		Immediately	\$24.50 / RSF FS
309 + 310	3,383	4,359	Immediately	\$24.50 / RSF FS
320	2,690		Immediately	\$24.50 / RSF FS
330	2,107		Immediately	\$24.50 / RSF FS
308 + 309	2,051	4,359	Immediately	\$24.50 / RSF FS
340	1,155		1/1/2026	\$24.50 / RSF FS
342	996		5/1/2025	\$24.50 / RSF FS
308	976	4,359	Immediately	\$24.50 / RSF FS

Suite 100

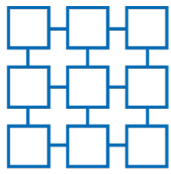


Suite 200



Suites 308, 309, 310, 320, 330, 340 & 342





THE COLLECTION

AT SABAL PARK

PORTFOLIO HIGHLIGHTS

1,000-acre business park providing convenient amenities, Verizon Smart Park technologies, easy access from all parts of Tampa Bay. Lush landscaping and several ponds provide a beautiful, scenic environment.



Options For All. Both single and multi-story product and varying floor plate sizes available.



Centrally Located. South of Dr. Martin Luther King Jr Blvd, near the interchange on I-4 and I-75.



Amenities. 5 restaurants, 3 hotels, and a child care facility providing superior amenities and unparalleled access.

