

-FOR SUBLEASE- BASSETT TECHNOLOGY PARK

3560 BASSETT STREET | SANTA CLARA

AVAILABLE FOR SUBLEASE - LED 6/30/29

±75,376 SF

WALT STEPHENSON | walt.stephenson@cushwake.com | LIC #01793438

JACOB BIDER | jacob.bider@cushwake.com | LIC #02110355

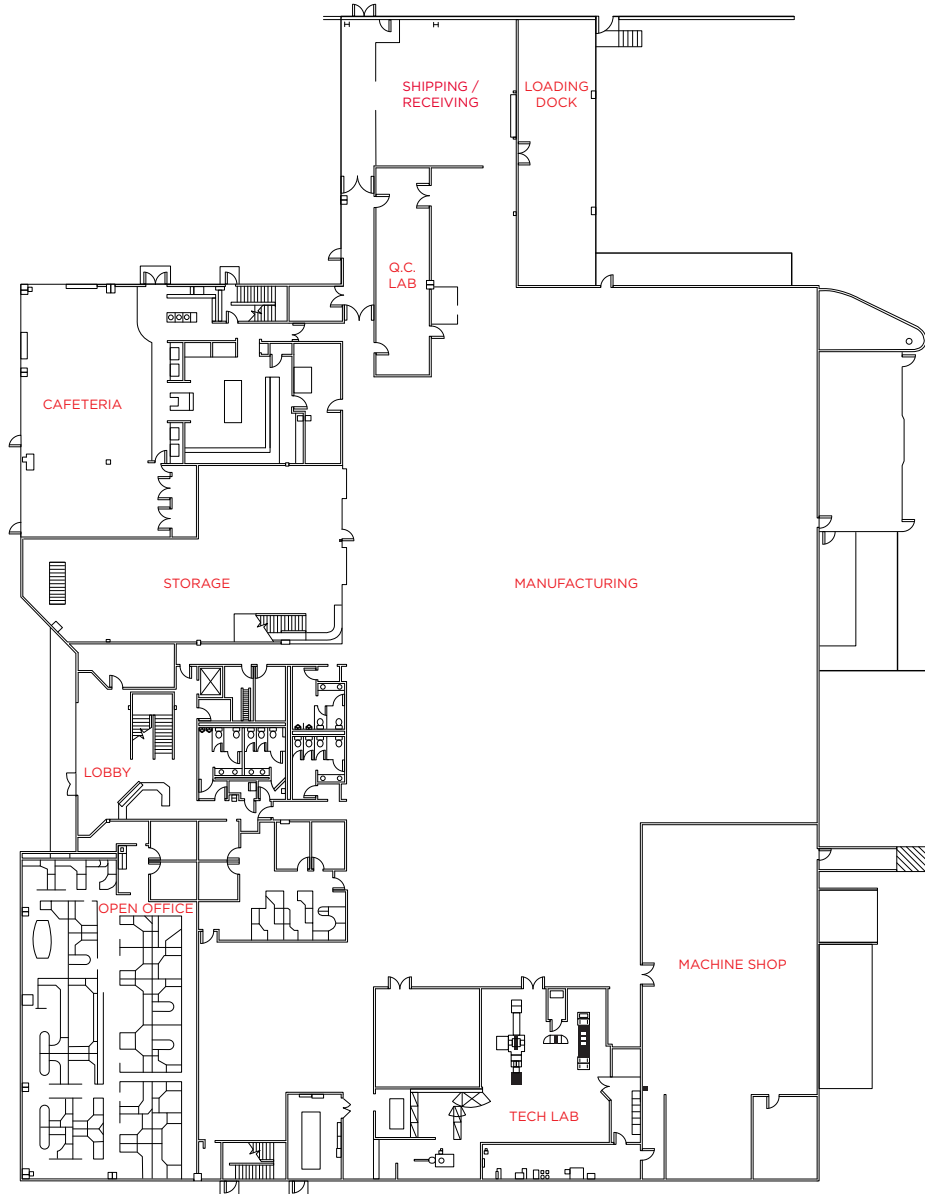
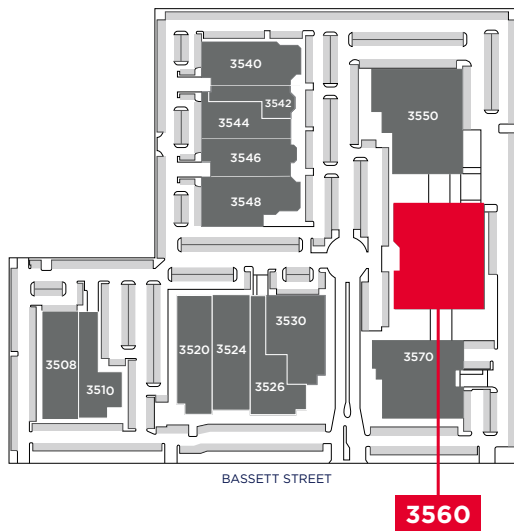
SCOTT KINDER | scott.kinder@cushwake.com | LIC #00775111



BASSETT TECHNOLOGY PARK

3560 BASSETT STREET FLOOR 1 | $\pm 75,376$ SF

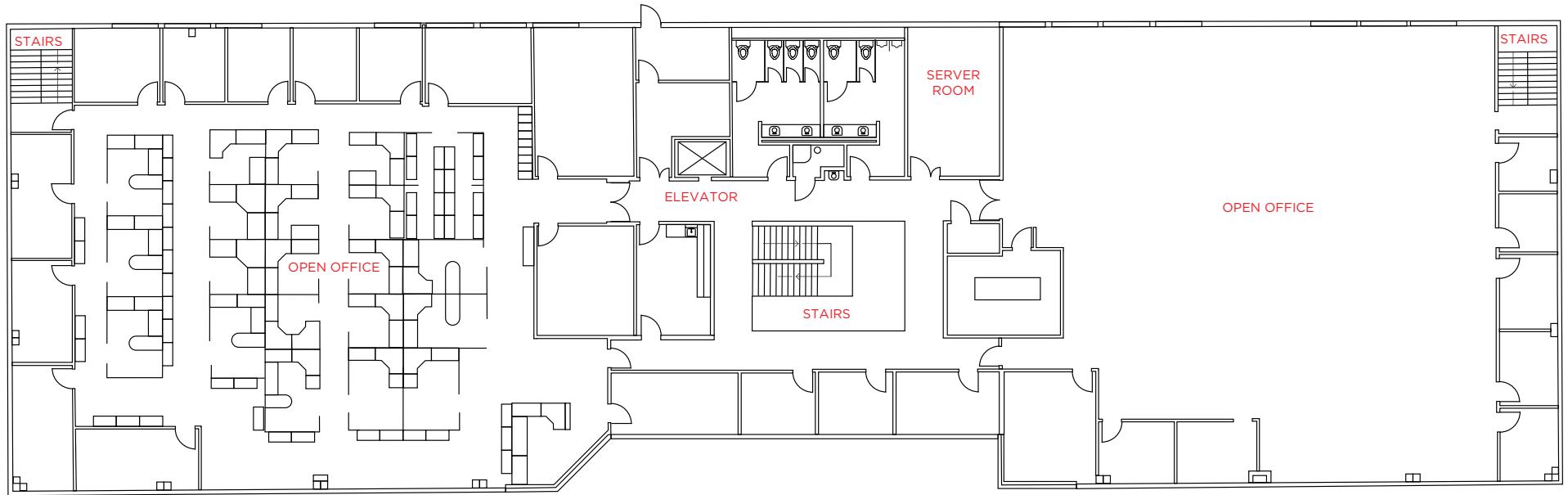
- High-Quality Manufacturing Facility
- Two, 14 Ft Grade Level Doors
- Dock Loading with 2 Docks
- 3,000 Amps @ 480 Volts
- $\pm 3.1/1,000$ Parking
- $\pm 18'$ Clear Height
- Skylights



BASSETT TECHNOLOGY PARK

3560 BASSETT STREET FLOOR 2 | $\pm 75,376$ SF

- Elevator served
- Plug and Play possible
- Server Room
- 7 Conference Rooms
- 16 Private Offices



BASSETT TECHNOLOGY PARK

AMENITY MAP



BASSETT TECHNOLOGY PARK

3560 BASSETT STREET | SANTA CLARA

AVAILABLE FOR SUBLEASE
±75,736 SF

WALT STEPHENSON | walt.stephenson@cushwake.com | LIC #01793438

JACOB BIDER | jacob.bider@cushwake.com | LIC #02110355

SCOTT KINDER | scott.kinder@cushwake.com | LIC #00775111

Cushman & Wakefield Copyright 2025. No warranty or representation, express or implied, is made to the accuracy or completeness of the information contained herein, and same is submitted subject to errors, omissions, change of price, rental or other conditions, withdrawal without notice, and to any special listing conditions imposed by the property owner(s). As applicable, we make no representation as to the condition of the property (or properties) in question.

