

**FOR LEASE** | 312,306 SF (DIVISIBLE TO 100,000 SF)

**NEW CONSTRUCTION DELIVERING 3Q 2026**



**3600 HOUBOLT ROAD | JOLIET, ILLINOIS**

**mapletree**







## 3600 Houbolt Road

Located within Chicago's I-80 Industrial Corridor, this facility boasts "inside the fence" access to the BNSF and UP Global Intermodal Yards, and close proximity to I-80 and I-55. The building is divisible, and a rare opportunity for smaller users to locate inside the Intermodal.

## Proven Ownership

Mapletree is a leading global real estate developer, investor and manager headquartered in Singapore. Mapletree owns and manages more than 70 million square feet of logistics and industrial properties across 26 states with offices in New York, Chicago, Atlanta, Dallas and Los Angeles.

[www.mapletree.com.sg](http://www.mapletree.com.sg)

## Property Highlights

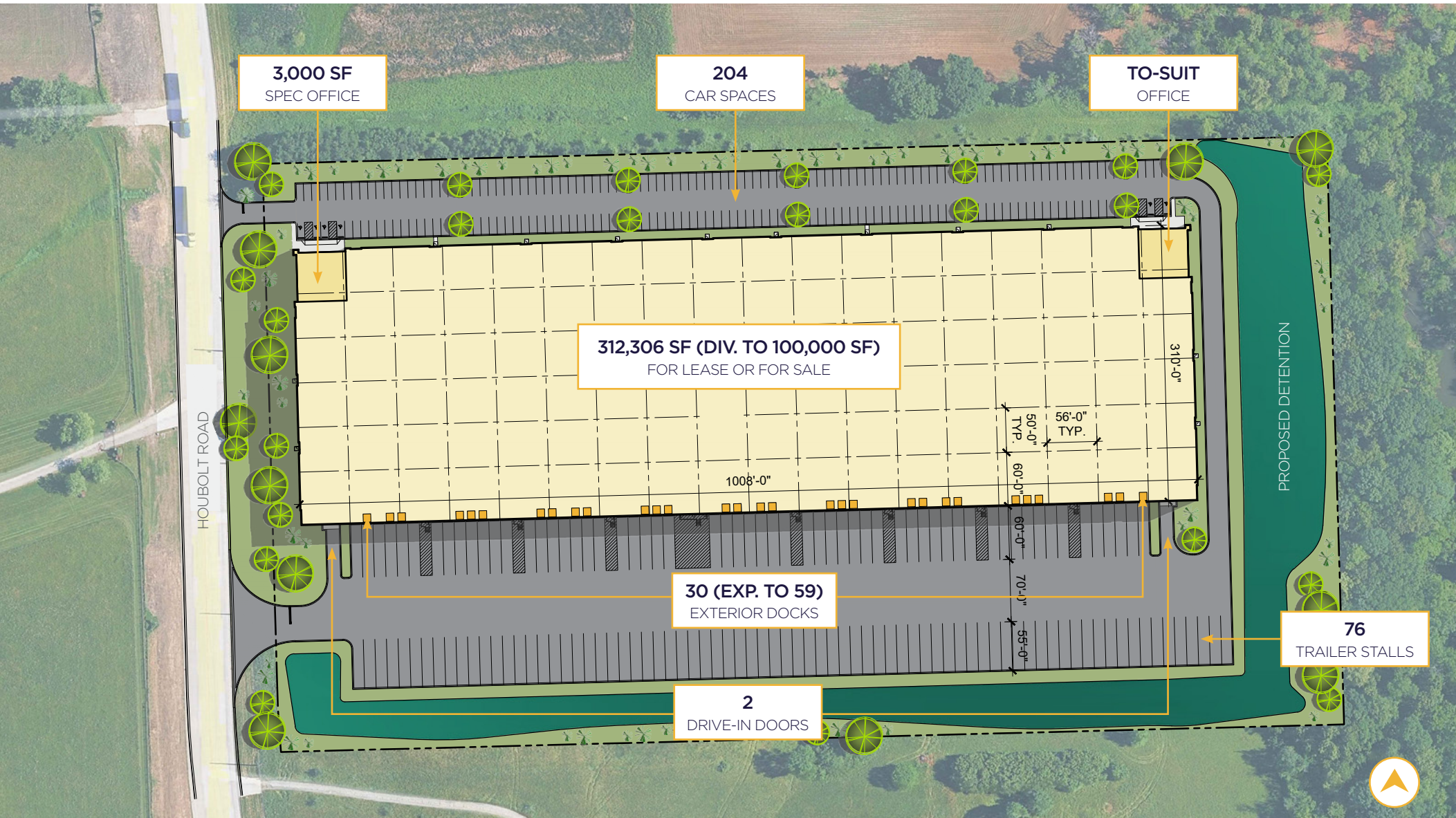
- » New construction
- » Delivering 3Q 2026
- » 312,306 SF; divisible to 100,000 SF
- » ±18.11-acre site
- » 3,000 SF spec office; additional office to-suit
- » 36' clear height
- » 30 exterior docks; expandable to 59
- » 2 drive-in doors
- » 3,000 Amps 480v
- » Ability to fence/secure
- » 76 trailer stalls
- » 204 car spaces
- » LED lighting
- » ESFR
- » Lease rate subject to offer
- » Near Intermodals, I-55 & I-80

**312,306 SF FOR LEASE** | 3600 HOUBOLT ROAD, JOLIET, ILLINOIS



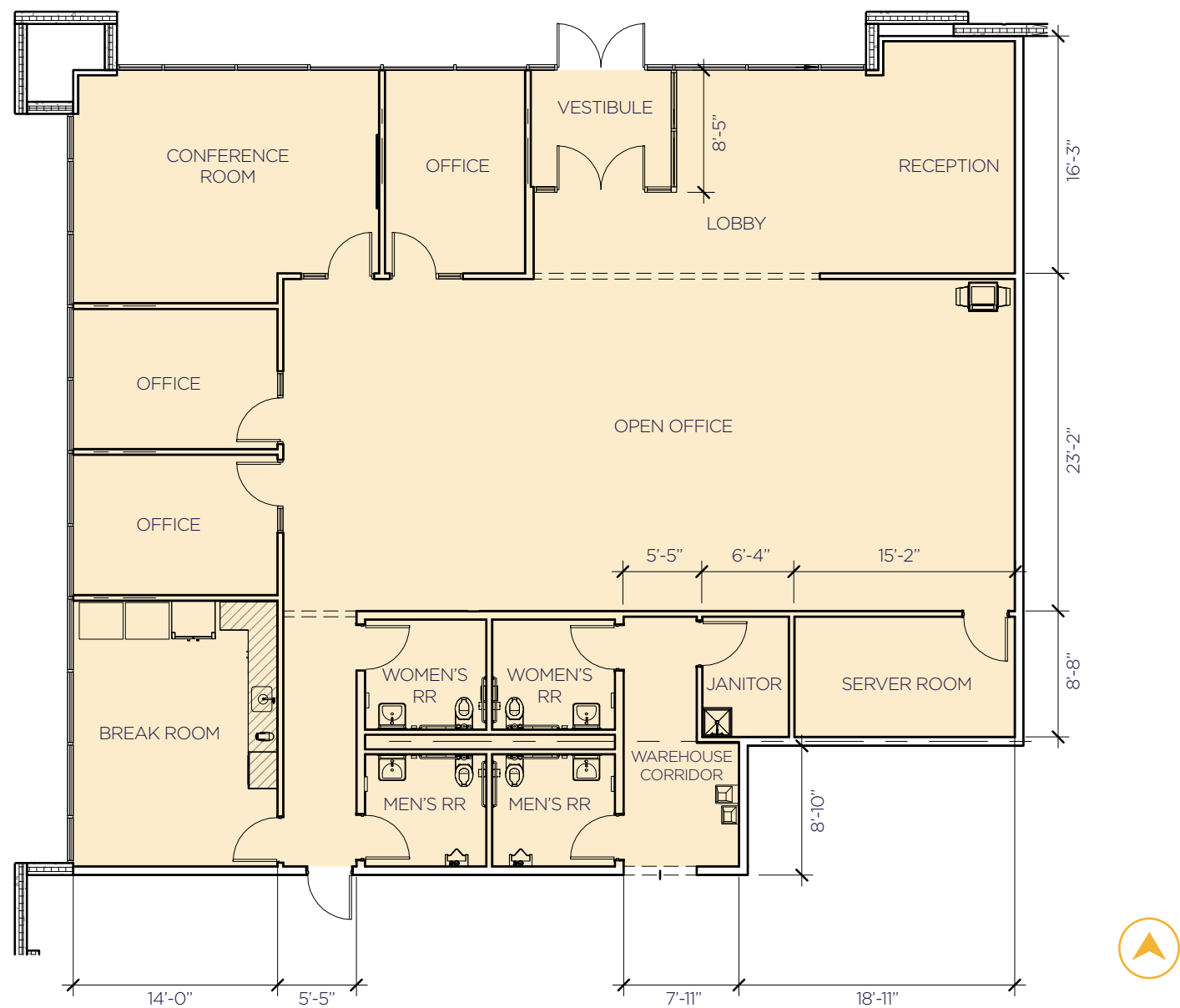
# Site Plan

312,306 SF (Divisible to 100,000 SF) | ±18.11 Acres



# Spec Office Plan

3,000 SF | Additional Office To-Suit









# FOR LEASE | 312,306 SF (DIVISIBLE TO 100,000 SF)



**3600 HOUBOLT ROAD | JOLIET, IL**  
NEW CONSTRUCTION DELIVERING 3Q 2026

## CONTACT

**JASON WEST, SIOR**  
Executive Vice Chair  
847 518 3210  
[jason.west@cushwake.com](mailto:jason.west@cushwake.com)

**SEAN HENRICK, SIOR**  
Vice Chair  
847 518 3215  
[sean.henrick@cushwake.com](mailto:sean.henrick@cushwake.com)

**RYAN KLINK**  
Managing Director  
847 518 3211  
[ryan.klink@cushwake.com](mailto:ryan.klink@cushwake.com)

maple<sup>tree</sup>



©2025 Cushman & Wakefield. All rights reserved. The information contained in this communication is strictly confidential. This information has been obtained from sources believed to be reliable but has not been verified. NO WARRANTY OR REPRESENTATION, EXPRESS OR IMPLIED, IS MADE AS TO THE CONDITION OF THE PROPERTY (OR PROPERTIES) REFERENCED HEREIN OR AS TO THE ACCURACY OR COMPLETENESS OF THE INFORMATION CONTAINED HEREIN, AND SAME IS SUBMITTED SUBJECT TO ERRORS, OMISSIONS, CHANGE OF PRICE, RENTAL OR OTHER CONDITIONS, WITHDRAWAL WITHOUT NOTICE, AND TO ANY SPECIAL LISTING CONDITIONS IMPOSED BY THE PROPERTY OWNER(S). ANY PROJECTIONS, OPINIONS OR ESTIMATES ARE SUBJECT TO UNCERTAINTY AND DO NOT SIGNIFY CURRENT OR FUTURE PROPERTY PERFORMANCE.