

2109 O'TOOLE AVENUE

SAN JOSE, CALIFORNIA | $\pm 1,600 - \pm 3,310$ SF FOR LEASE



For more information, please contact:

Steve Pace
P +1 408 482 7037
steve.pace@cushwake.com
LIC #00817396

Dan Hollingsworth
P +1 408 615 3431
dan.hollingsworth@cushwake.com
LIC #01117716

Tiana Dampier
P +1 408 436 3680
tiana.dampier@cushwake.com
LIC #02191012

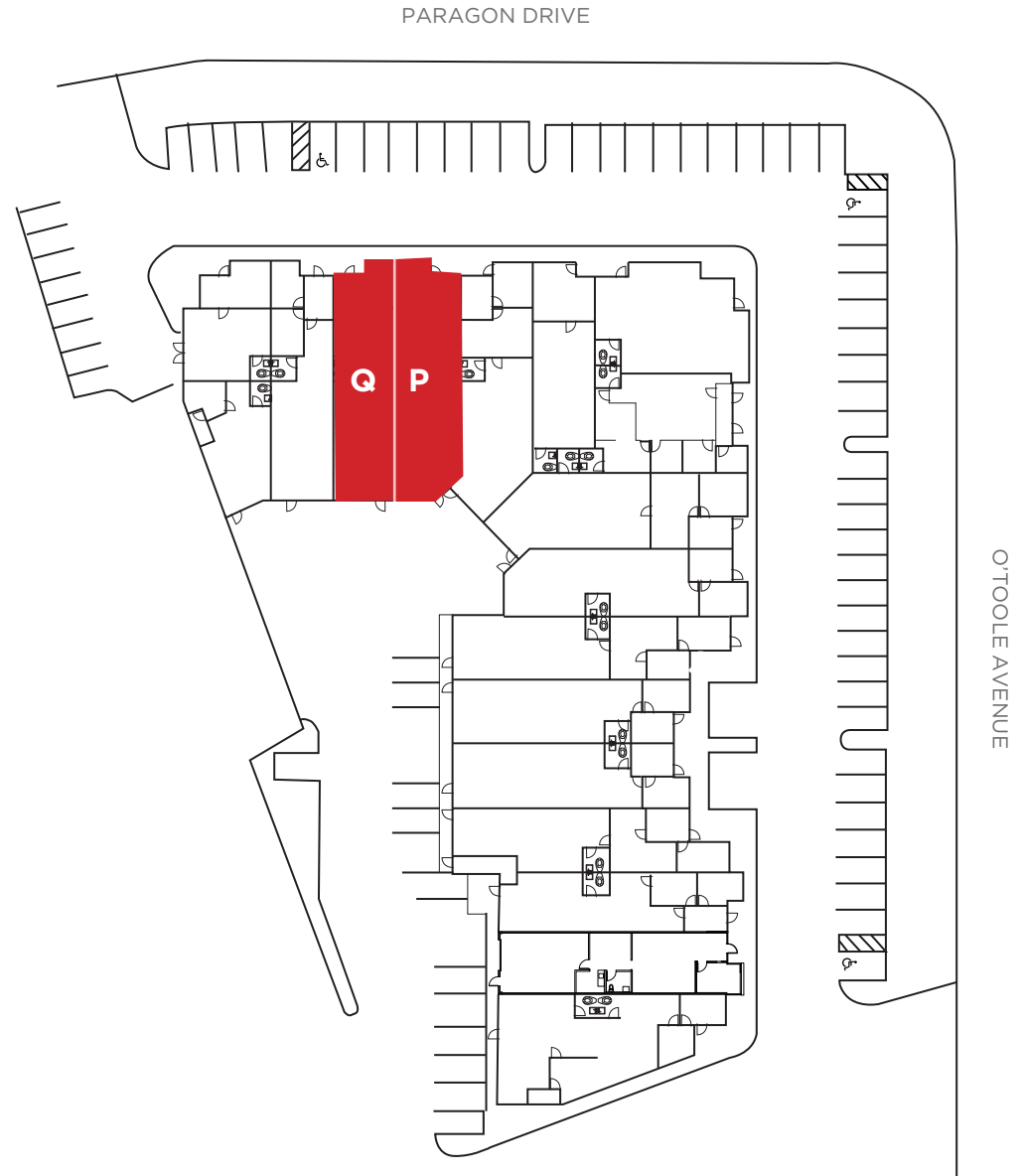
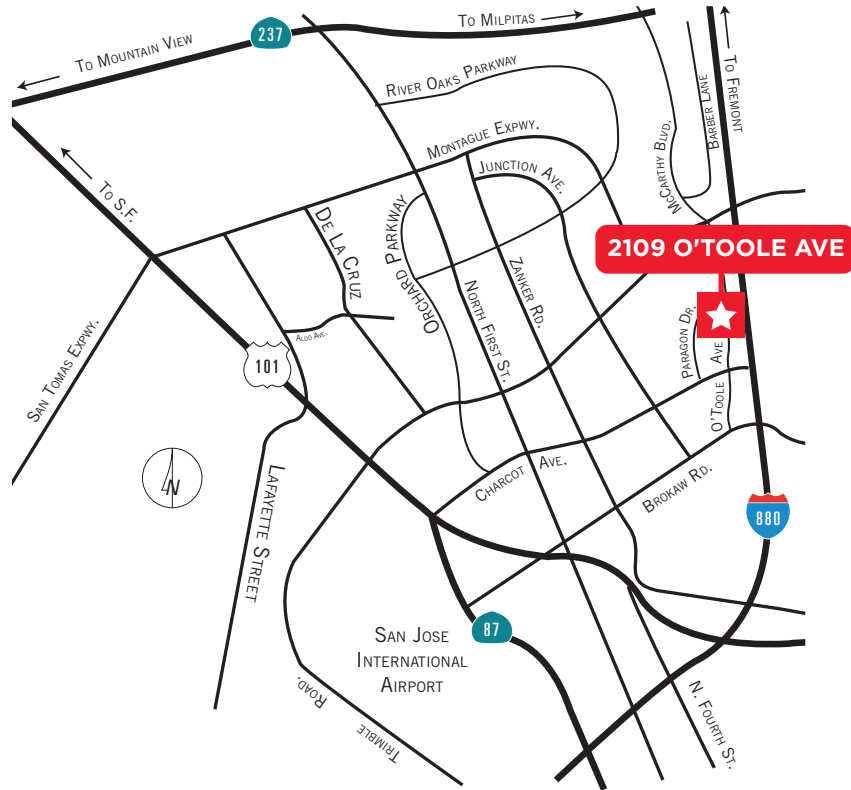


2109 O'TOOLE AVENUE

San Jose, California

Highlights

- High Image Business Park
- Flexible Floor Plans
- Signage Available
- Direct Access to Highway 880



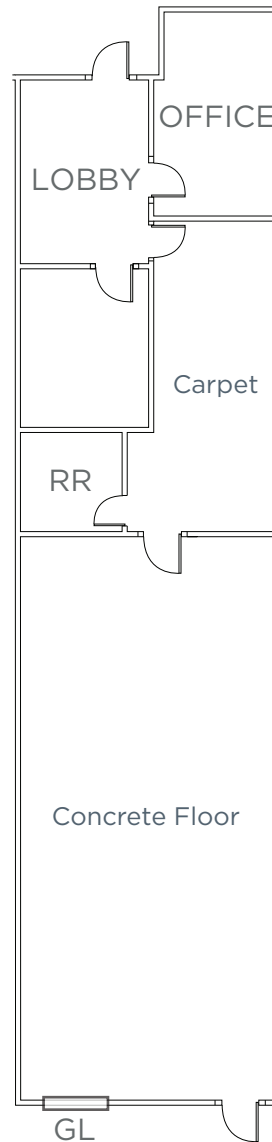
Floor Plan

SUITE Q

±1,600 SF

Available 10/1/25

- Warehouse & office space
- GL loading door
- 100A @ 120/208V
- HVAC - one 4 ton unit
- Concrete floor in warehouse with open ceiling
- Clear height is 14'

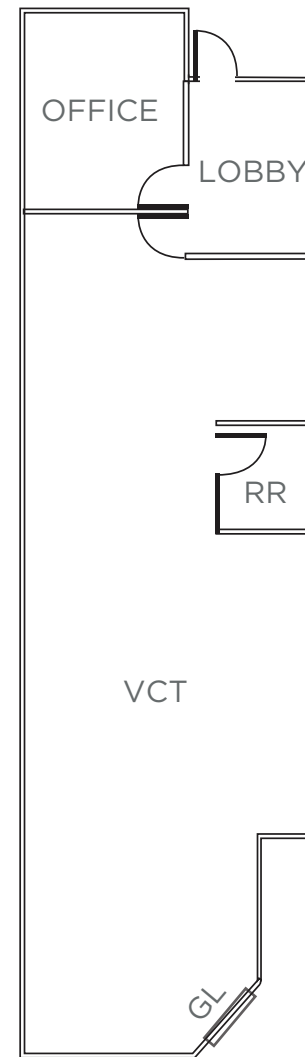


Floor Plan

SUITE P

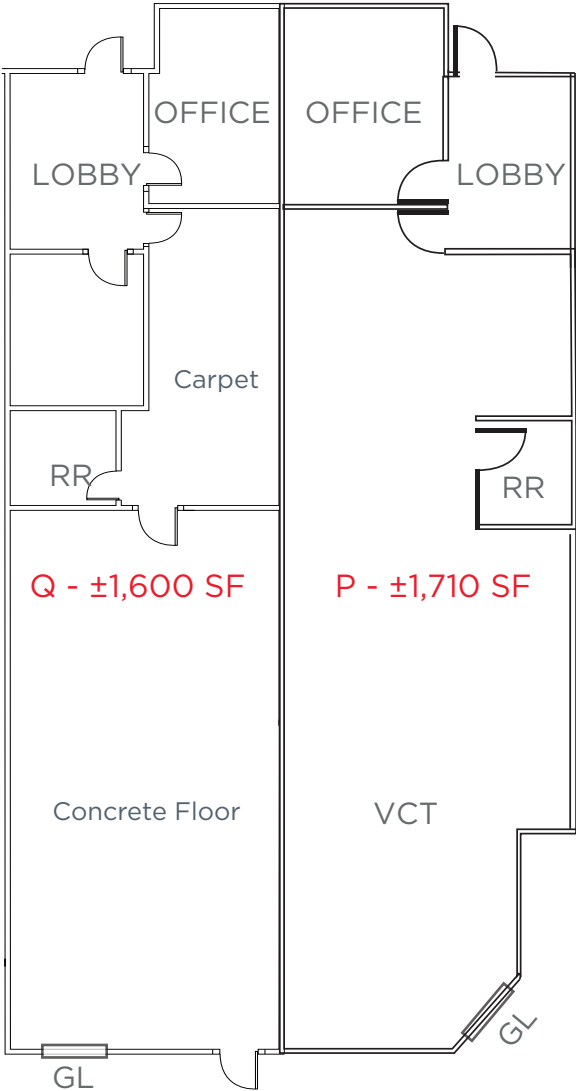
±1,710 SF

- Manufacturing/test & office space
- 1 Roll up door
- 100A @ 120/208V
- 100% HVAC - 5 tons
- Dropped ceiling in VCT flooring area (manufacturing/test) - Clear height is 14' to roof deck



Floor Plan

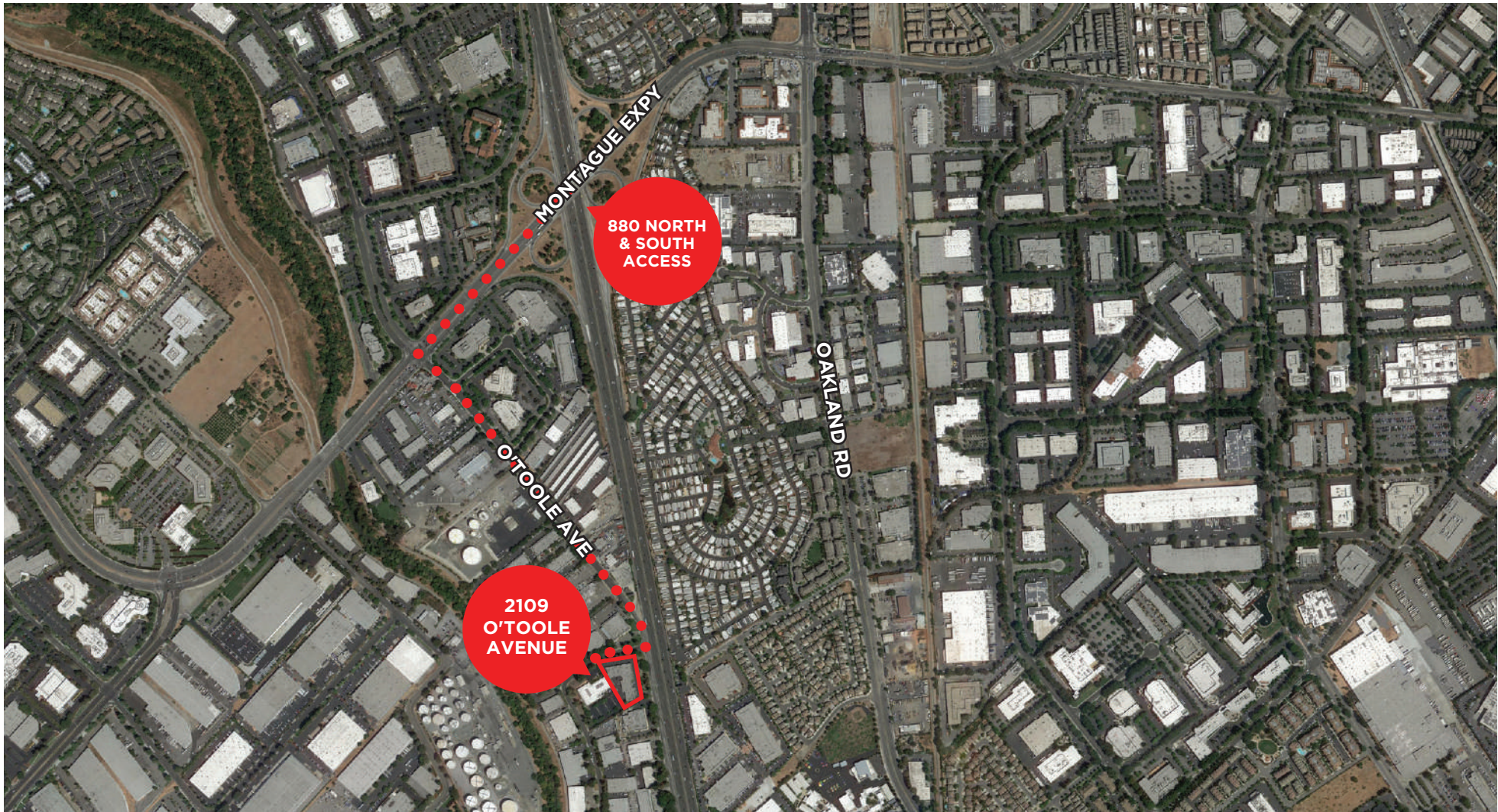
SUITE Q & P
±3,310 SF



2109 O'TOOLE AVENUE

San Jose, California

880 Freeway Access



2109 O'TOOLE AVENUE

San Jose, California

Public Transit and Amenities

