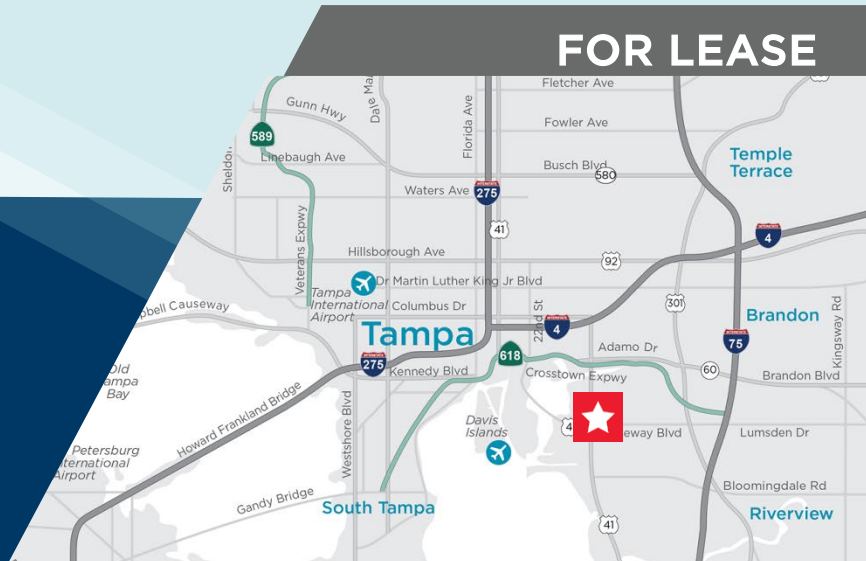


# MERIDIAN EAST

5100 Causeway Blvd  
Tampa, FL 33619

FOR LEASE



# MERIDIAN EAST

Vivian Place & Gelman Place, Tampa, FL 33619



## PROPERTY HIGHLIGHTS

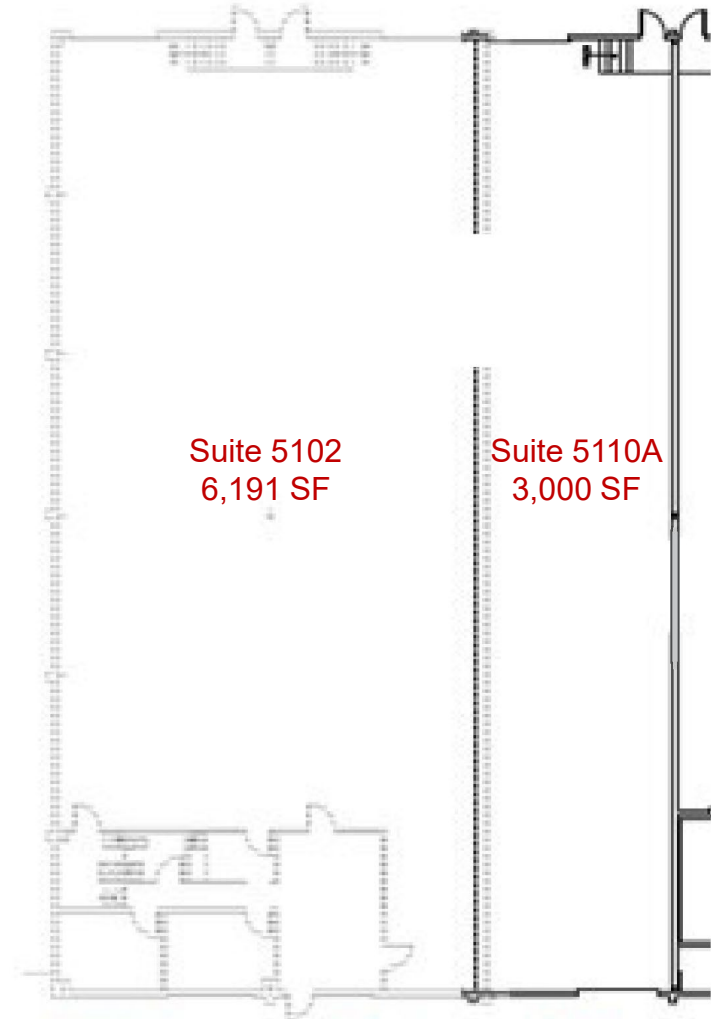
- Dock and Grade Level Loading
- Concrete Block Construction
- Fully Sprinklered
- Easy Access to the Port, I-4, Lee Roy Selmon Expressway, US HWY 301, and I-75



# 5102-5110A Causeway Blvd

## PROPERTY DETAILS

|                     |                     |
|---------------------|---------------------|
| <b>TOTAL SF</b>     | 9,191 SF            |
| <b>OFFICE SF</b>    | 818 SF              |
| <b>CLEAR HEIGHT</b> | 16-20'              |
| <b>LOADING</b>      | Three (3) Dock High |
| <b>OCCUPANCY</b>    | February 2026       |



## FOR ADDITIONAL INFORMATION, PLEASE CONTACT:

**TREY CARSWELL, SIOR**  
Managing Director  
+1 813 204 5314  
trey.carswell@cushwake.com

**LISA ROSS, SIOR**  
Managing Director  
+1 813 424 3211  
lisa.ross@cushwake.com

**SAM KOROLOS**  
Senior Associate  
+1 704 989 1327  
sam.korolos@cushwake.com

**MELISSA WATTERWORTH**  
Associate  
+1 813 599 2190  
melissa.watterworth@cushwake.com



# 5124 VIVIAN PLACE

## PROPERTY DETAILS

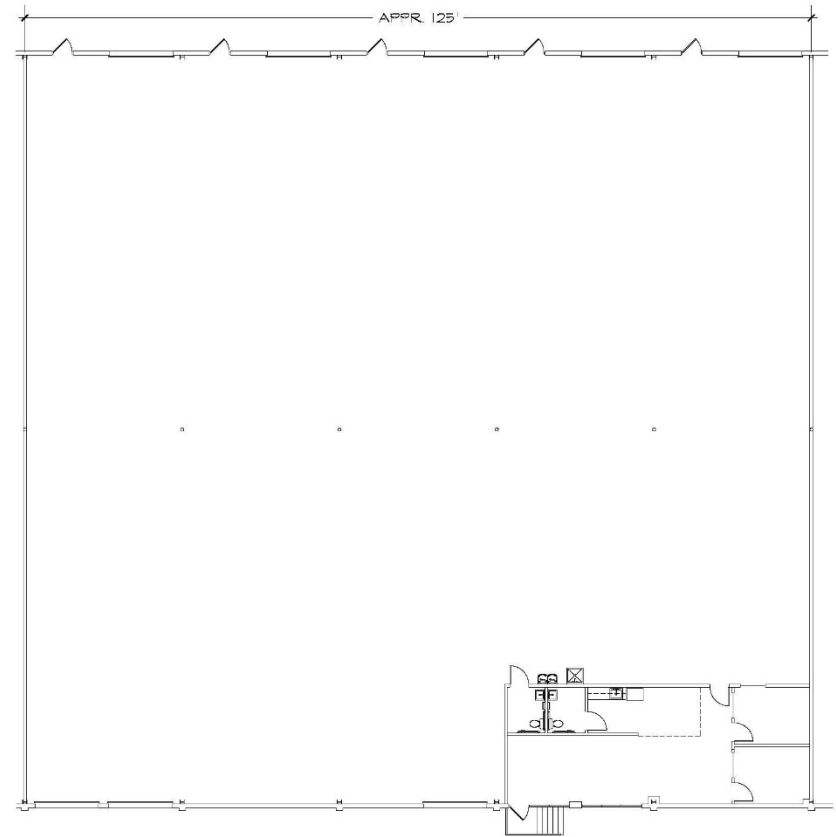
**TOTAL SF** 14,640 SF

**OFFICE SF** 1,000 SF

**CLEAR HEIGHT** 16'-20'

**LOADING** Three (3) Dock High - Front  
Five (5) Grade Level - Rear

**OCCUPANCY** Available Now



## FOR ADDITIONAL INFORMATION, PLEASE CONTACT:

**TREY CARSWELL, SIOR**  
Managing Director  
+1 813 204 5314  
trey.carswell@cushwake.com

**LISA ROSS, SIOR**  
Managing Director  
+1 813 424 3211  
lisa.ross@cushwake.com

**SAM KOROLOS**  
Senior Associate  
+1 704 989 1327  
sam.korolos@cushwake.com

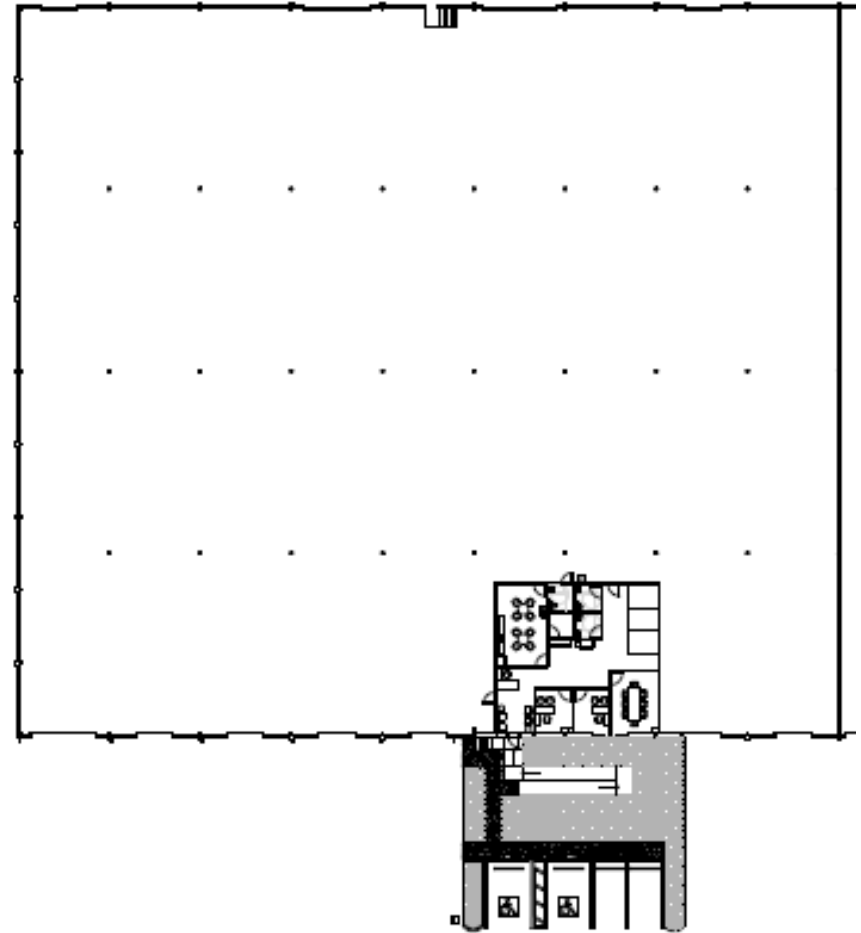
**MELISSA WATTERWORTH**  
Associate  
+1 813 599 2190  
melissa.watterworth@cushwake.com



# 2414 GELMAN PLACE

## PROPERTY DETAILS

|                     |   |
|---------------------|---|
| <b>TOTAL SF</b>     | 44,640 SF                                     |
| <b>OFFICE SF</b>    | 1,853 SF                                      |
| <b>CLEAR HEIGHT</b> | 20-24'  |
| <b>LOADING</b>      | Five (5) Dock High<br>Two (2) Ramped Drive-In |
| <b>OCCUPANCY</b>    | October 2025                                  |



## FOR ADDITIONAL INFORMATION, PLEASE CONTACT:

**TREY CARSWELL, SIOR**  
Managing Director  
+1 813 204 5314  
trey.carswell@cushwake.com

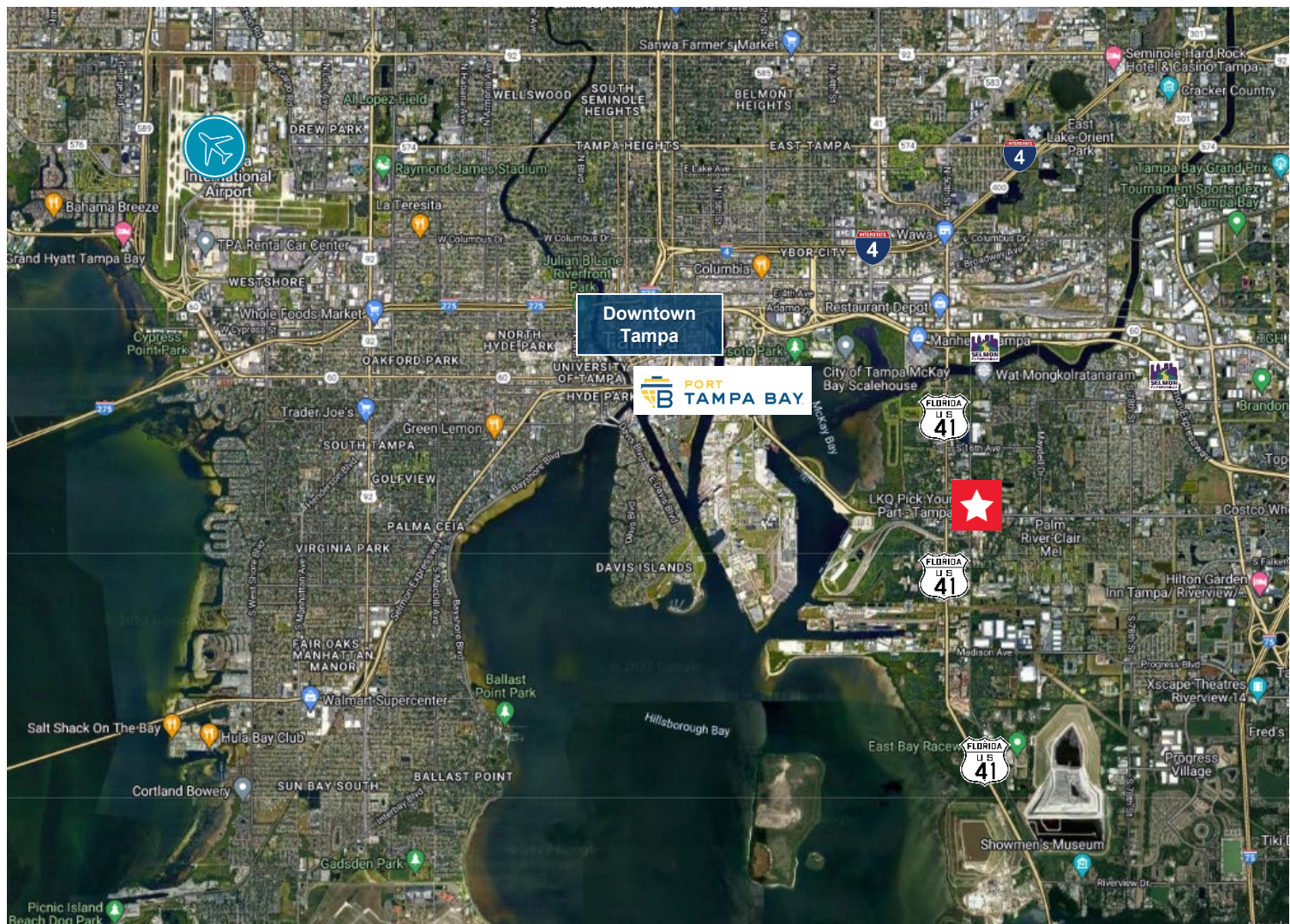
**LISA ROSS, SIOR**  
Managing Director  
+1 813 424 3211  
lisa.ross@cushwake.com

**SAM KOROLOS**  
Senior Associate  
+1 704 989 1327  
sam.korolos@cushwake.com

**MELISSA WATTERWORTH**  
Associate  
+1 813 599 2190  
melissa.watterworth@cushwake.com



# MERIDIAN EAST



## FOR ADDITIONAL INFORMATION, PLEASE CONTACT:

**TREY CARSWELL, SIOR**  
Managing Director  
+1 813 204 5314  
trey.carswell@cushwake.com

**LISA ROSS, SIOR**  
Managing Director  
+1 813 424 3211  
lisa.ross@cushwake.com

**SAM KOROLOS**  
Senior Associate  
+1 704 989 1327  
sam.korolos@cushwake.com

**MELISSA WATTERWORTH**  
Associate  
+1 813 599 2190  
melissa.watterworth@cushwake.com

