

RETAIL SPACES FOR LEASE

1228-1232 W ELIZABETH STREET

FORT COLLINS, COLORADO 80521



1,936 SF Available
Suite C4 & C5*

1,382 SF Available
Suite C1

Tattoo &
Piercing

Smoke Shop

Café Bangkok
Thai & Sushi

LIMINAL
FUTURE DESIGN

My
Empanadas

CAMPUS VILLAGE SHOPPING CENTER
1,382 – 3,318 SF AVAILABLE



CUSHMAN &
WAKEFIELD

1228-1232 W ELIZABETH STREET



PROPERTY OVERVIEW

Off Street Parking | Building Signage Available | High Foot Traffic

Set in the heart of Campus West, Campus Village offers a prime retail opportunity just 800 feet from Colorado State University. This established neighborhood center features 1,382 – 3,318 SF of available space with modern upgrades including LED lighting, luxury vinyl plank flooring, and fresh interior finishes. With 336 feet of street frontage, prominent signage options, and over 100 parking spaces, the property draws consistent foot and vehicle traffic from nearby student housing and residential neighborhoods. Ideal for retailers looking to thrive in a high-density, high-visibility location.

AVAILABILITIES

Suite	Size	Available
-------	------	-----------

Suite C1	1,382 SF	Now
----------	----------	-----

Suite C4 & C5*	1,936 SF	Now
----------------	----------	-----

*Demisable



\$18.00-\$20.00/SF NNN
NNN: \$8.75/SF

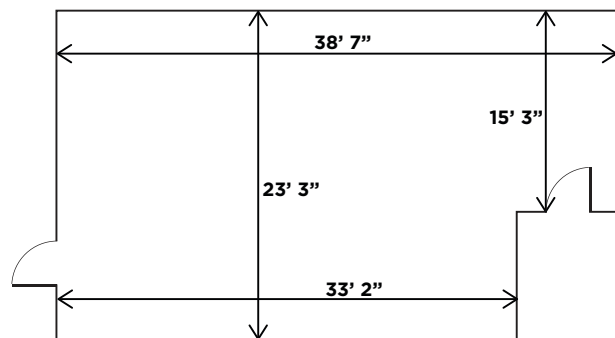


FLOOR PLANS

SUITE C1

1,382 SF | Available Now

Ideal for Retail or Hair Salon, Possible Cloud Kitchen,
Includes Private Restroom

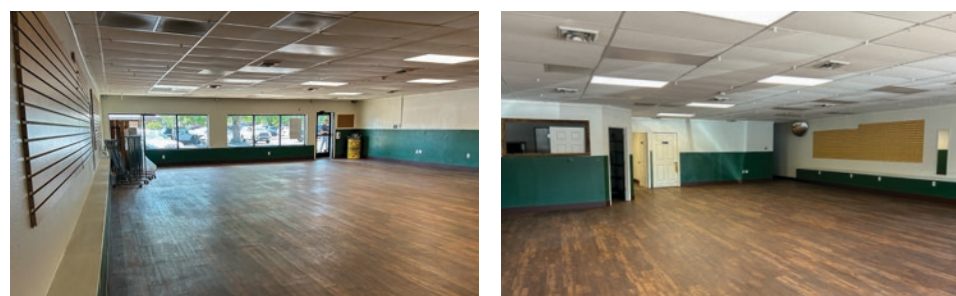
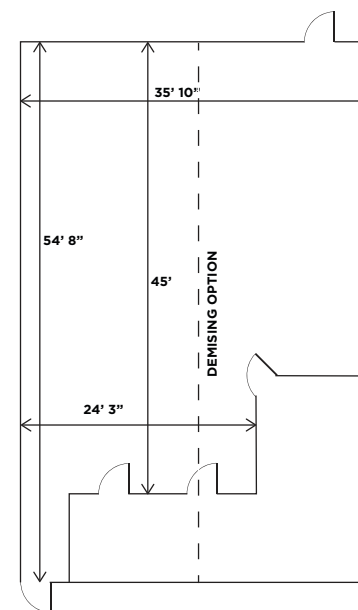


SUITE C1

SUITE C4 & C5

1,936 SF | Available Now

Ideal for Fitness or Retail, Includes
Private Restroom

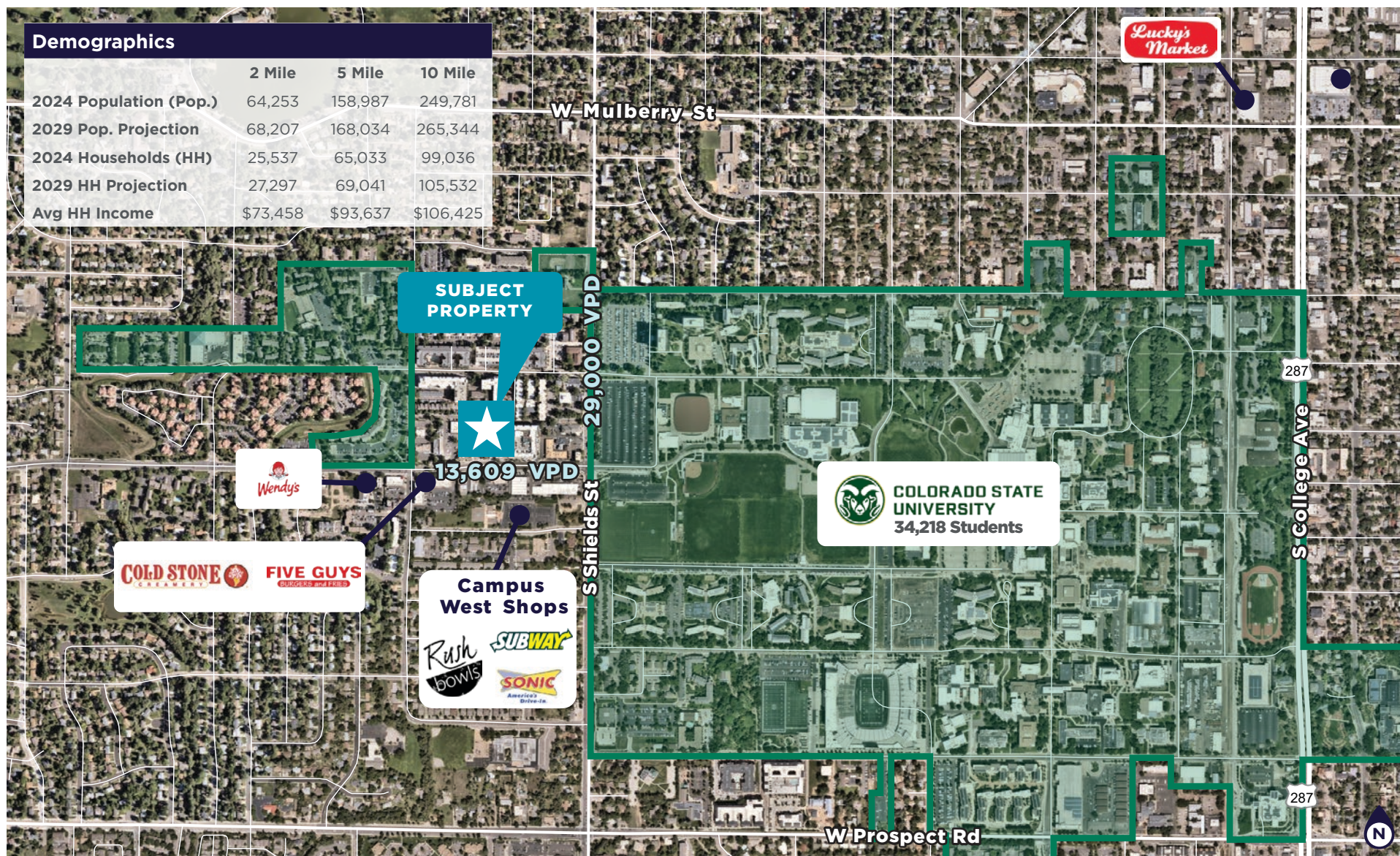


SUITE C4 & C5

1228-1232 W ELIZABETH STREET



LOCATION OVERVIEW

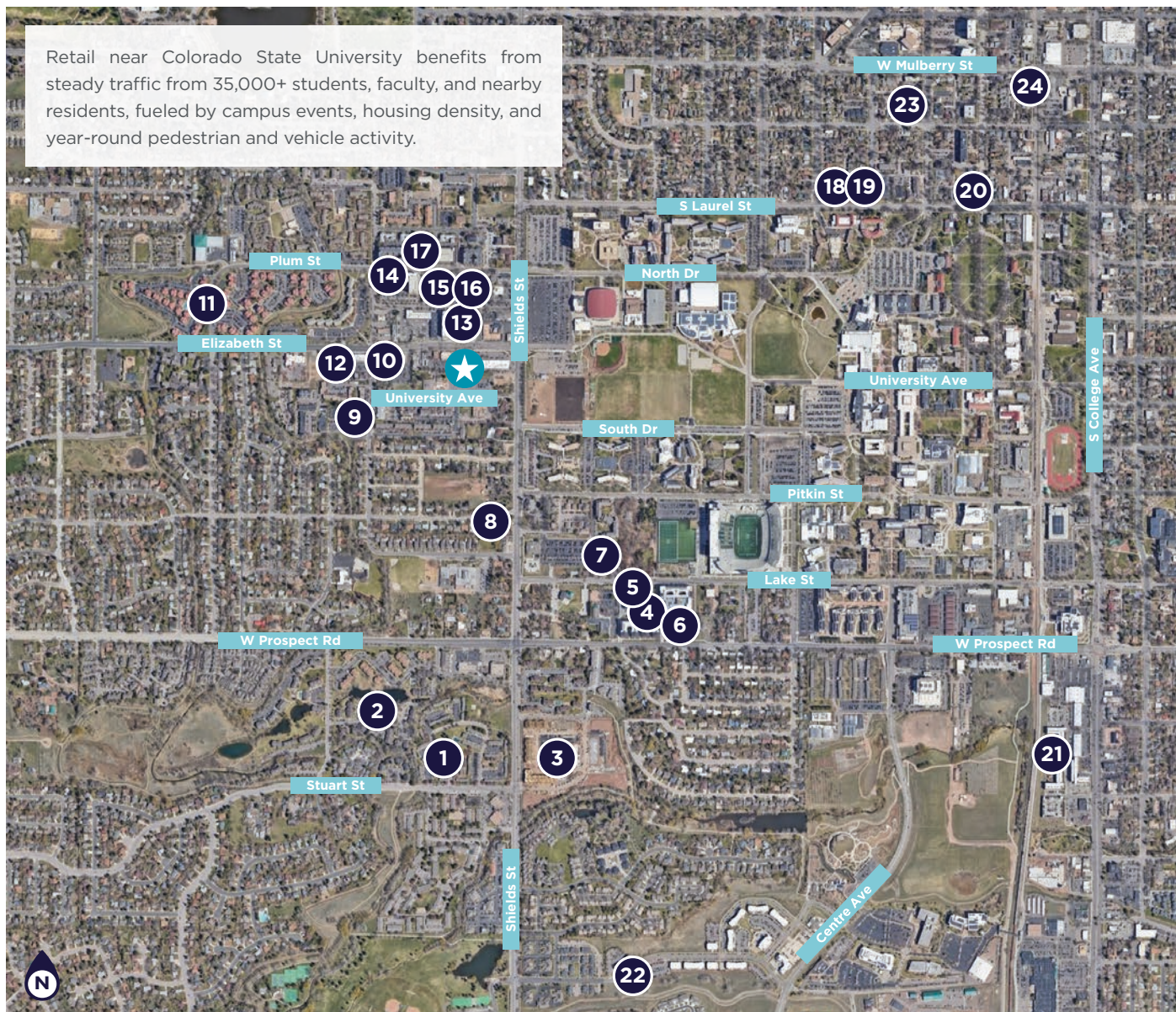


1228-1232 W ELIZABETH STREET



ADJACENT STUDENT HOUSING

Retail near Colorado State University benefits from steady traffic from 35,000+ students, faculty, and nearby residents, fueled by campus events, housing density, and year-round pedestrian and vehicle activity.



- ★ **Subject Property**
- 1 **The Hewing**
182 Units
- 2 **Alpine Apartments**
168 Units / 251 Beds
- 3 **The Quarry**
319 Units
- 4 **The Standard**
237 Units / 776 Beds
- 5 **Stadium Apartments**
102 Units / 385 Beds
- 6 **Apex Apartments**
61 Units
- 7 **Social at Stadium Walk**
125 Units / 140 Beds
- 8 **Carriage House**
54 Units / 94 Beds
- 9 **Social West**
198 Units / 285 Beds
- 10 **Westpark Apartments**
27 Units
- 11 **Rams Village Apartments**
356 Units / 979 Beds
- 12 **1409 Elizabeth**
27 Units / 51 Beds
- 13 **Union on Elizabeth**
107 Units / 402 Beds
- 14 **Union on Plum**
62 Units / 229 Beds
- 15 **Union on Alley**
79 Units / 198 Beds
- 16 **Eleven13 Apartments**
107 Units / 216 Beds
- 17 **The District at Campus West**
189 Units / 659 Beds
- 18 **Pura Vida Place**
52 Units / 100 Beds
- 19 **Atrium Suites**
24 Units / 60 Beds
- 20 **Flats at the Oval**
47 Units / 99 Beds
- 21 **State Fort Collins**
220 Units / 665 Beds
- 22 **The Grove Apartments**
218 Units / 612 Beds
- 23 **Cavalier Apartments**
52 Units
- 24 **Max Flats**
64 Units

RETAIL SPACES FOR LEASE

1228-1232 W ELIZABETH STREET

FORT COLLINS, COLORADO 80521



For more information, please contact:

Anne Spry
Senior Associate
+1 970 690 0167
anne.spry@cushwake.com

Jared Goodman, CCIM, SIOR
Managing Director
+1 970 690 4227
jared.goodman@cushwake.com

Cole VanMeveren
Senior Director
+1 970 219 3802
cole.vanmeveren@cushwake.com

Aki Palmer
Executive Managing Director
+1 970 267 7727
aki.palmer@cushwake.com



772 Whalers Way, Suite 200
Fort Collins, CO 80525
+1 970 776 3900
cushmanwakefield.com

©2025 Cushman & Wakefield. All rights reserved. The information contained in this communication is strictly confidential. This information has been obtained from sources believed to be reliable but has not been verified. NO WARRANTY OR REPRESENTATION, EXPRESS OR IMPLIED, IS MADE AS TO THE CONDITION OF THE PROPERTY (OR PROPERTIES) REFERENCED HEREIN OR AS TO THE ACCURACY OR COMPLETENESS OF THE INFORMATION CONTAINED HEREIN, AND SAME IS SUBMITTED SUBJECT TO ERRORS, OMISSIONS, CHANGE OF PRICE, RENTAL OR OTHER CONDITIONS, WITHDRAWAL WITHOUT NOTICE, AND TO ANY SPECIAL LISTING CONDITIONS IMPOSED BY THE PROPERTY OWNER(S). ANY PROJECTIONS, OPINIONS OR ESTIMATES ARE SUBJECT TO UNCERTAINTY AND DO NOT SIGNIFY CURRENT OR FUTURE PROPERTY PERFORMANCE.