



CUSHMAN &
WAKEFIELD



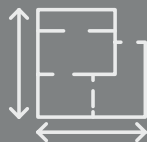
FOR LEASE

NORTH POINTE BUILDING C

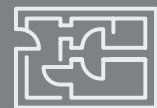
825 EAST 1180 SOUTH
AMERICAN FORK, UTAH



78,337 RSF
TOTAL BUILDING SIZE



5,000-51,866 RSF
SUITES 100 AND AVAILABLE



FULL FLOORS
AVAILABLE

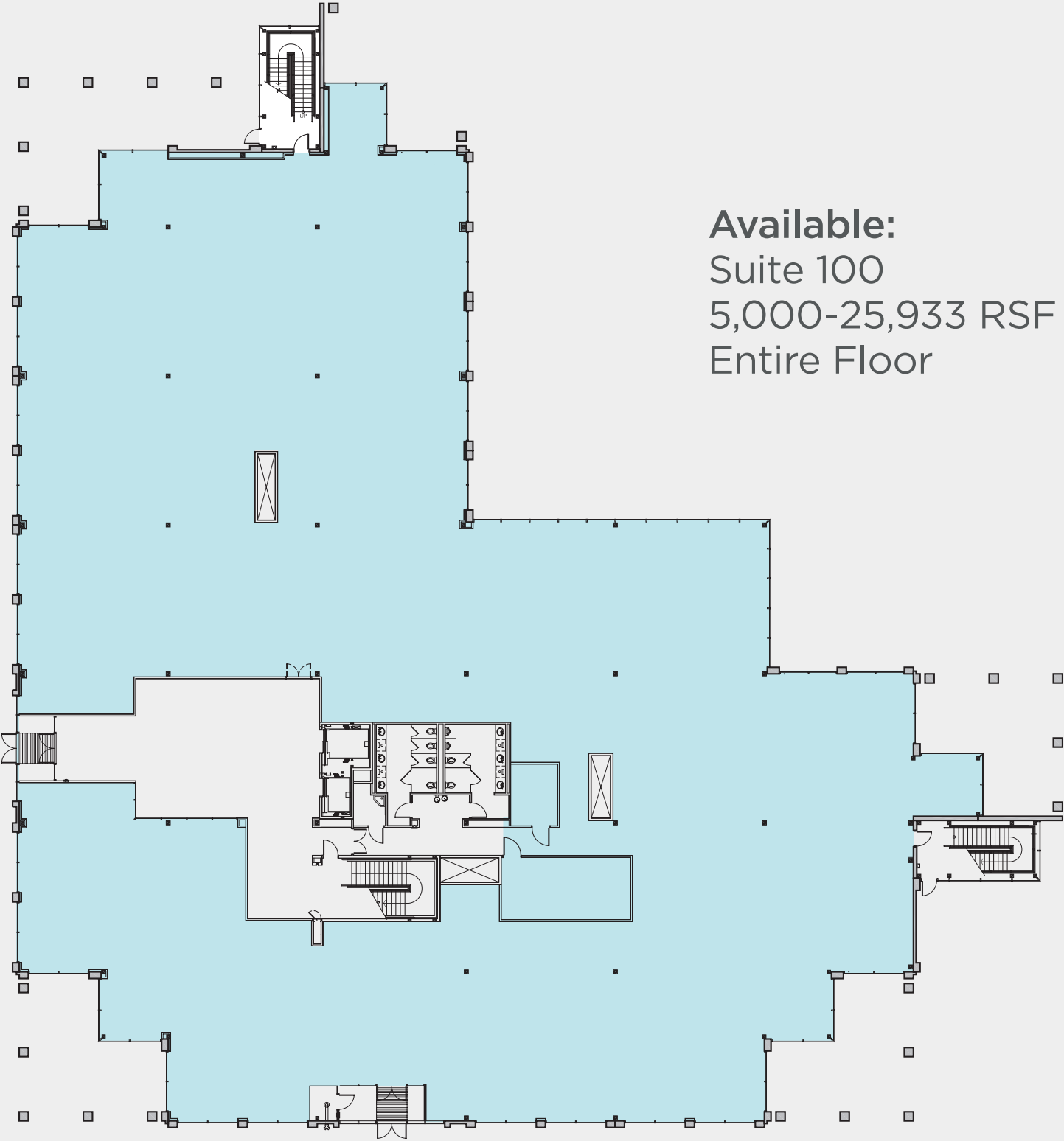
NORTH POINTE BUILDING C

Building Highlights

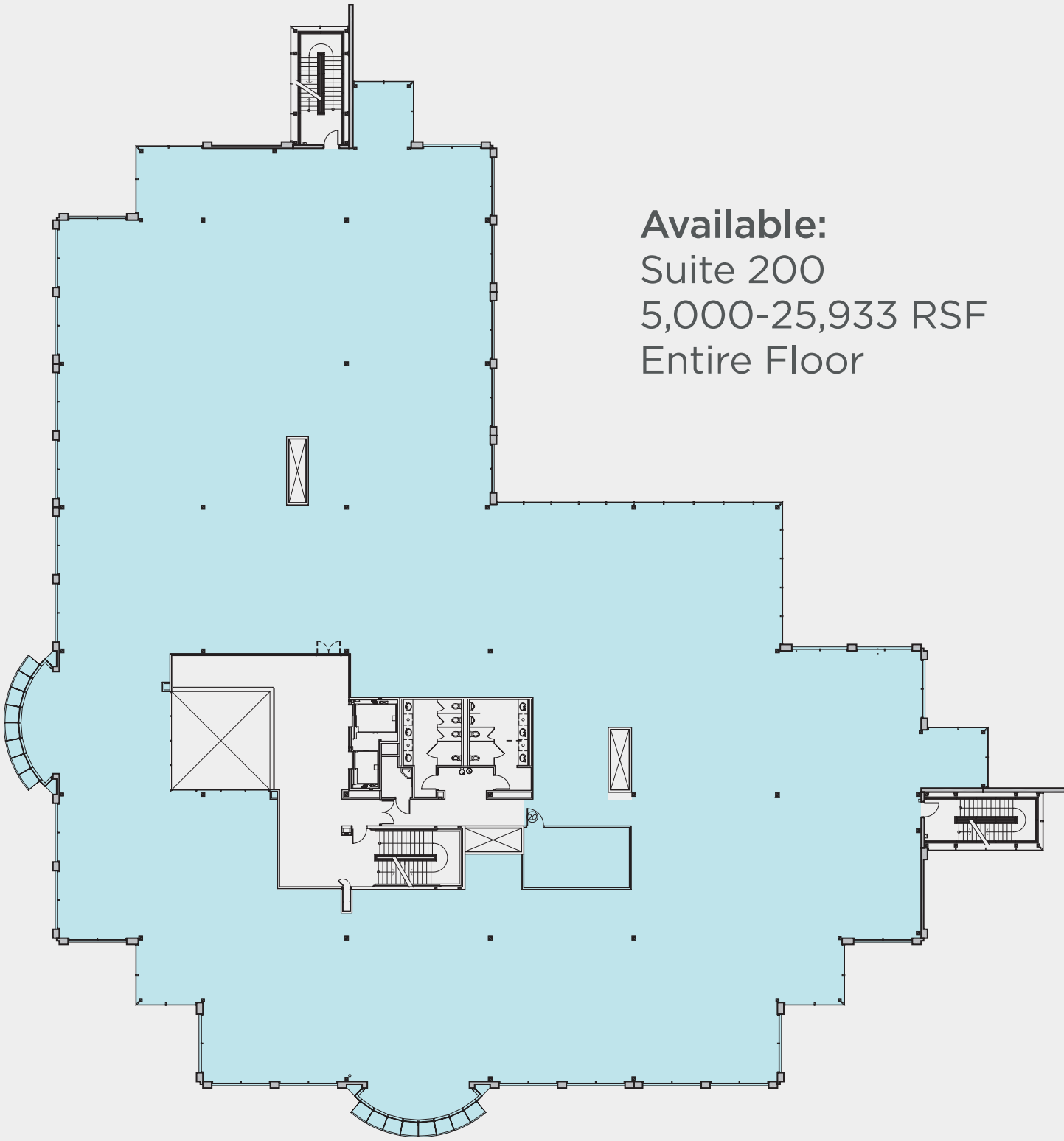
- Prominent freeway frontage with high visibility
- Signage opportunity
- Expansive windows providing abundant natural light that enhance workplace ambience
- Stunning views
- Surrounded by ample dining, retail, and service amenities
- Basketball court access
- Convenient access to I-15
- Parking: 5/1000
- Rate: \$25.00/RSF, Full-Service Gross



NORTH POINTE BUILDING C



Available:
Suite 100
5,000-25,933 RSF
Entire Floor



Available:
Suite 200
5,000-25,933 RSF
Entire Floor

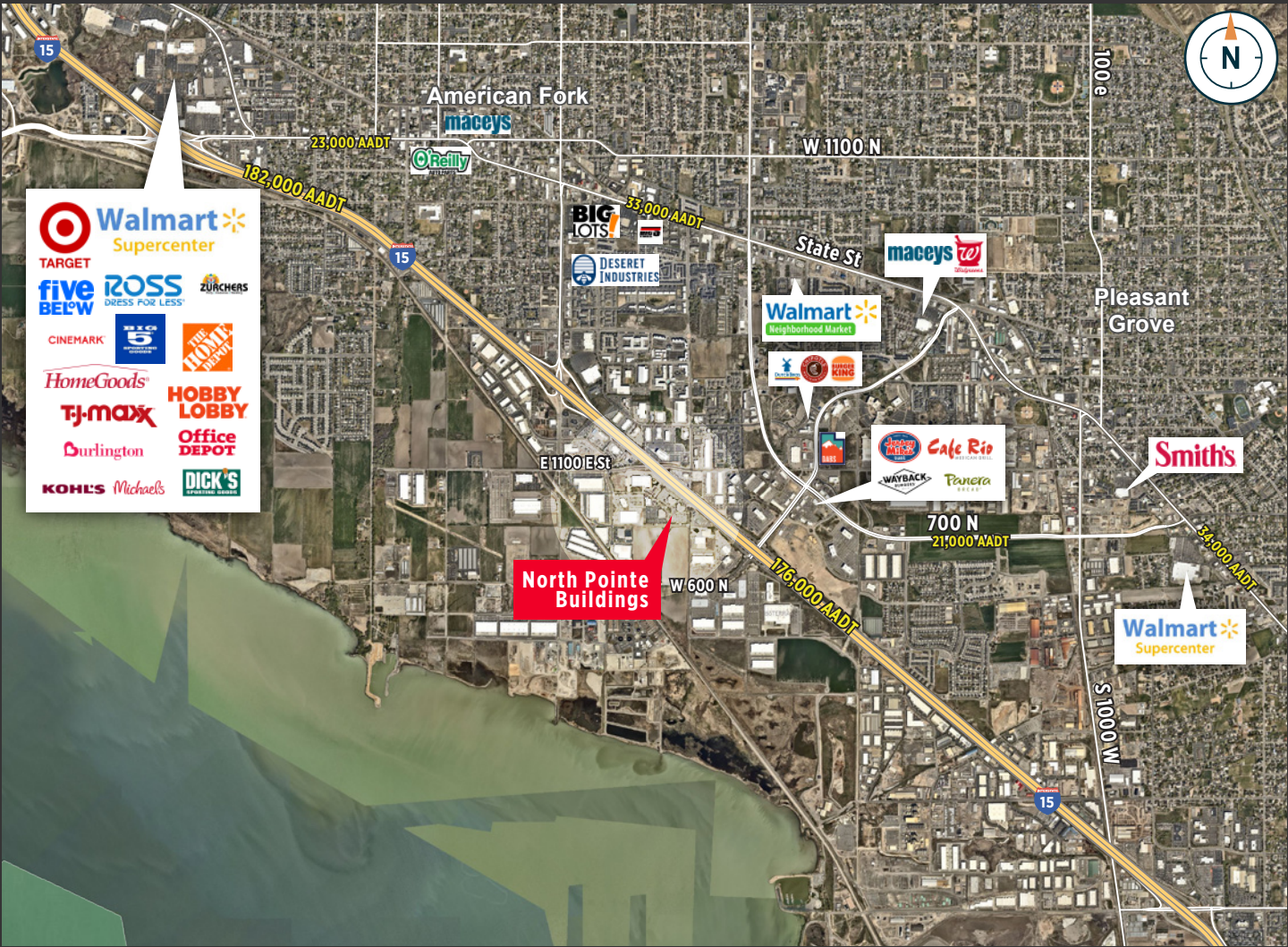
NORTH POINTE BUSINESS PARK



American Fork, UT



American Fork offers the perfect blend of accessibility, talent, and lifestyle. Located in the heart of Utah's rapidly growing Silicon Slopes corridor, the city provides quick freeway and commuter rail access to both Salt Lake City and Provo, connecting businesses to a deep and diverse workforce. Surrounded by stunning mountain views, abundant amenities, and vibrant retail and dining options, American Fork delivers an environment that attracts and retains top talent. With its strong economic growth, business-friendly atmosphere, and unmatched quality of life, it's an ideal place to plant roots and thrive both personally and professionally.



FOR LEASE

NORTH POINTE BUILDING C

825 EAST 1180 SOUTH
AMERICAN FORK, UTAH



170 South Main Street, Suite 1600
Salt Lake City, UT 84101
+1 801 322 2000
cushmanwakefield.com



For More Information, Contact:

Jesse Mangum
Managing Director
+1 801 303 5547

jesse.mangum@cushwake.com

Melina Miramontes
Director
+1 801 303 5435

melina.miramontes@cushwake.com

©2025 Cushman & Wakefield. All rights reserved. The information contained in this communication is strictly confidential. This information has been obtained from sources believed to be reliable but has not been verified. NO WARRANTY OR REPRESENTATION, EXPRESS OR IMPLIED, IS MADE AS TO THE CONDITION OF THE PROPERTY (OR PROPERTIES) REFERENCED HEREIN OR AS TO THE ACCURACY OR COMPLETENESS OF THE INFORMATION CONTAINED HEREIN, AND SAME IS SUBMITTED SUBJECT TO ERRORS, OMISSIONS, CHANGE OF PRICE, RENTAL OR OTHER CONDITIONS, WITHDRAWAL WITHOUT NOTICE, AND TO ANY SPECIAL LISTING CONDITIONS IMPOSED BY THE PROPERTY OWNER(S). ANY PROJECTIONS, OPINIONS OR ESTIMATES ARE SUBJECT TO UNCERTAINTY AND DO NOT SIGNIFY CURRENT OR FUTURE PROPERTY PERFORMANCE. G:\SL\Shared\Apps\Gigas\1 - Projects\Mangum_Jesse\1 - Flyers\NorthPointeBusinessPark\BuildingC