

CROSSROADS logistics park

LOCATED AT THE INTERSECTION
OF I-75 & I-4

EAST TAMPA SUBMARKET



482,000 SF CLASS A INDUSTRIAL PARK



OVERVIEW

UNPARALLELED CONNECTIVITY AT THE INTERSECTION OF I-75 & I-4

482,000 SF CLASS A INDUSTRIAL PARK

SPACE AVAILABLE BETWEEN 30,000 - 202,000 SF

EXCELLENT I-75 VISIBILITY

OFF-DOCK TRAILER PARKING AVAILABLE



EAST SIDE - 100% LEASED

WEST SIDE - AVAILABLE FOR LEASE

LOCATED AT THE INTERSECTION OF I-75 & I-4 | TAMPA

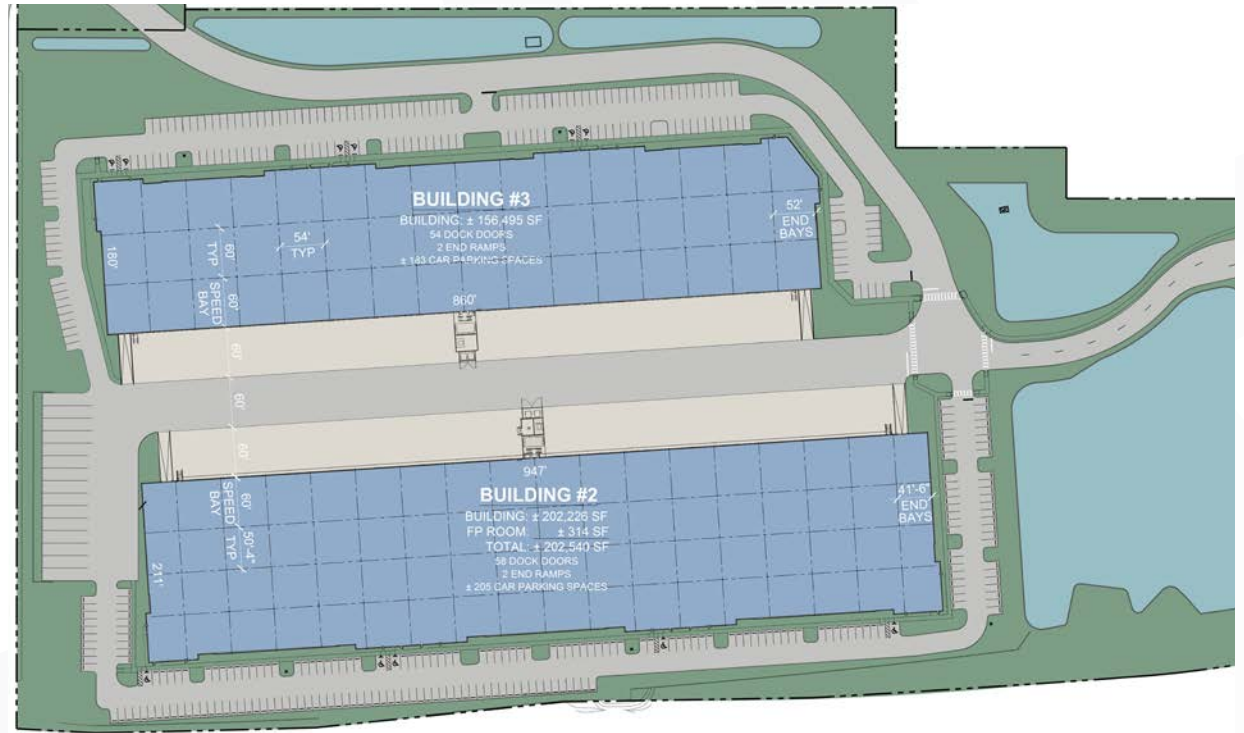
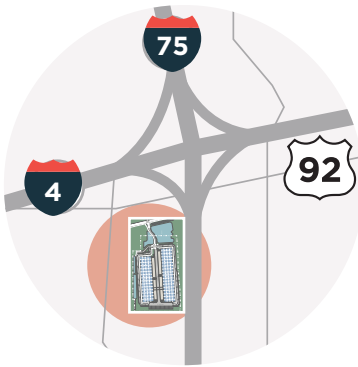
INGRESS / EGRESS



WEST SITE

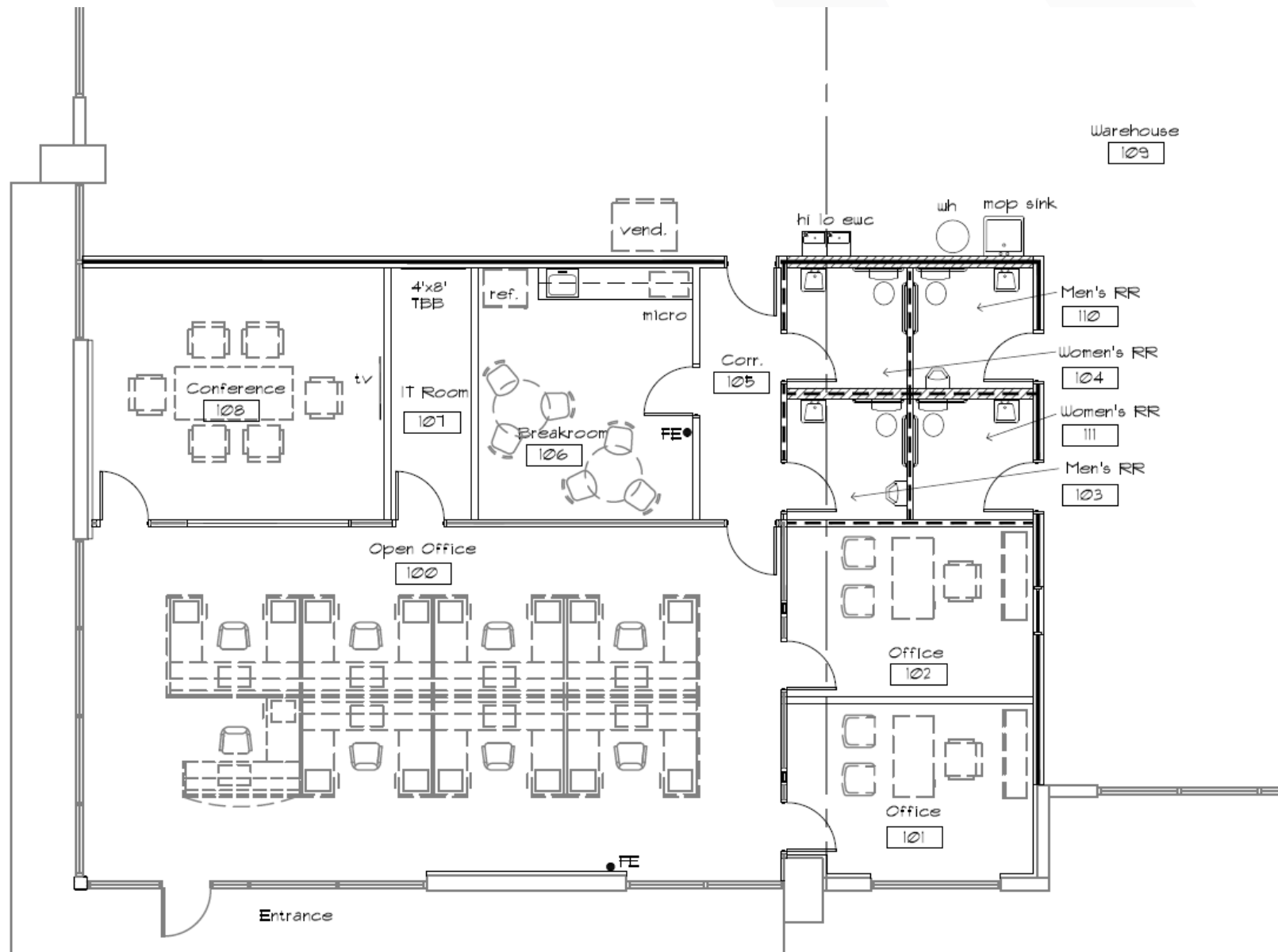
±359,000

TOTAL SF AVAILABLE



	BUILDING 2	BUILDING 3
BUILDING TYPE:	Rear-Load	Rear-Load
BUILDING SIZE:	±202,540 SF	± 156,495 SF
SPEC OFFICE SIZE:	2,208 SF or BTS	2,208 SF or BTS
DOCK DOORS:	58 (9' x 10') Dock Highs	54 (9' x 10') Dock Highs
DRIVE-IN DOORS:	2 (12' x 14') Ramped Drive-Ins	2 (12' x 14') Ramped Drive-Ins
CEILING HEIGHT:	32' Minimum to Bar Joist	32' Minimum to Bar Joist
COLUMN SPACING:	54'W x 50'D w/ 60' Speed Bay	54'W x 60'D w/ 60' Speed Bay
CAR PARKING:	0.99/1,000 Parking Ratio	1.22/1,000 Parking Ratio
OFF-DOCK TRAILER DROPS:	29 for Entire Park, Allocation per Tenant Negotiable	29 for Entire Park, Allocation per Tenant Negotiable
TRUCK COURT:	180' Deep Shared Truck Court with 60' Concrete Apron	180' Deep Shared Truck Court with 60' Concrete Apron
SPRINKLER:	ESFR	ESFR
ELECTRICAL:	TECO	TECO
DELIVERING:	OCT 1 2025	TBD

OFFICE FLOOR PLAN



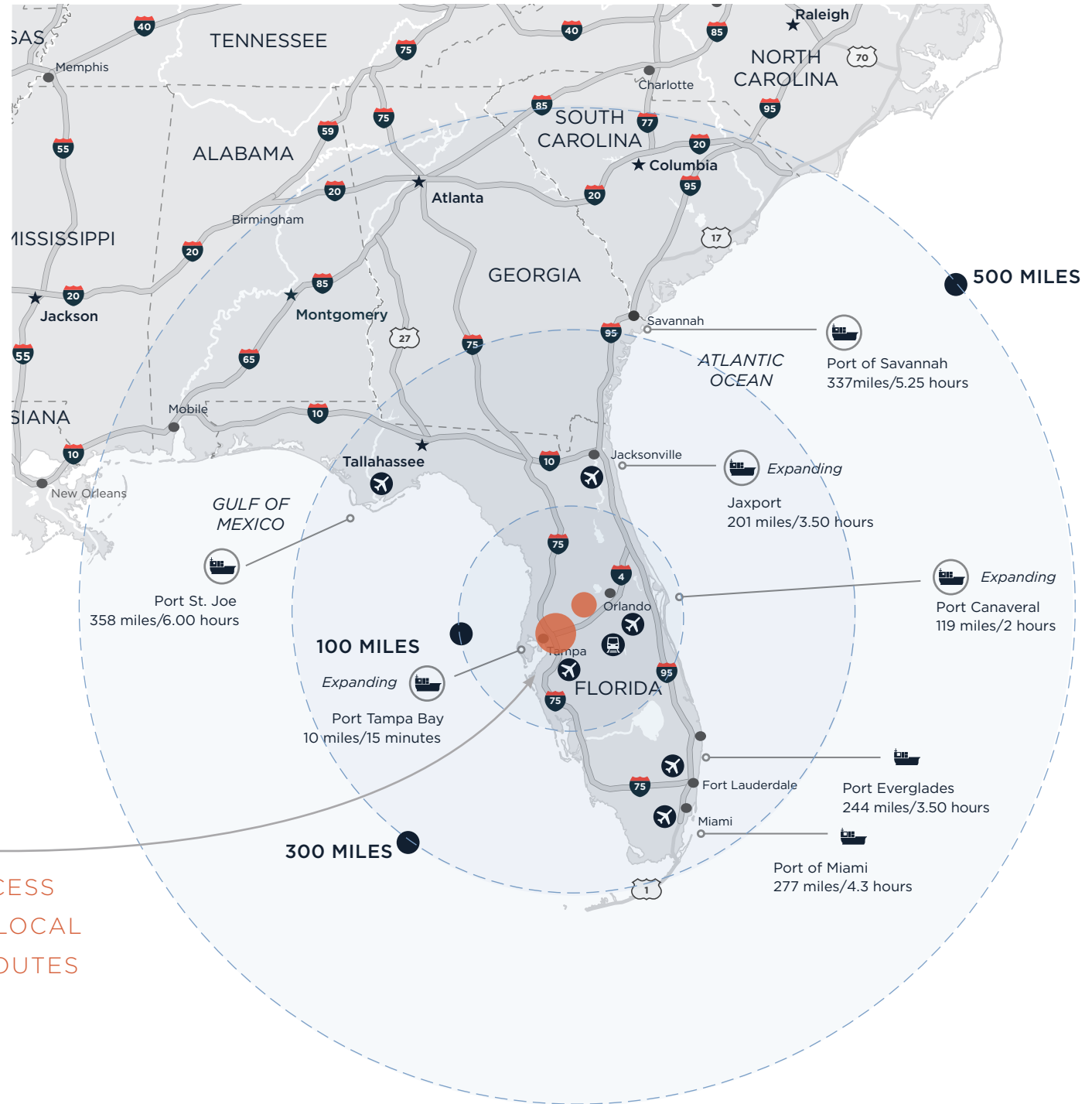


LOCATION

STRATEGICALLY
LOCATED
AT THE
INTERSECTION OF
I-75 & I-4



UNMATCHED ACCESS
TO REGIONAL & LOCAL
DISTRIBUTION ROUTES





**LOCATED AT THE INTERSECTION
OF I-75 & I-45
TAMPA, FL 33610**

FOR MORE INFORMATION, PLEASE CONTACT:

JOHN JACKSON, CCIM, SIOR
EXECUTIVE DIRECTOR
727 643 7316
JOHN.JACKSON@CUSHWAKE.COM

JT FAIRCLOTH, SIOR
DIRECTOR
813 833 3242
JT.FAIRCLOTH@CUSHWAKE.COM

CASEY PERRY
SENIOR ASSOCIATE
813 233 6564
CASEY.G.PERRY@CUSHWAKE.COM

