



**CUSHMAN &  
WAKEFIELD**

Southwestern Ontario

**FOR LEASE**

**207 DUNDAS STREET UNIT 1**

*London, ON*



## PRIME COMMERCIAL RETAIL/OFFICE SPACE

### ASKING RENT

**\$16.50**  
PSF NET

### ADDITIONAL RENT

**\$7.50**  
PSF (Est.)

### AVAILABLE SPACE

**1,500**  
SF

**TYLER DESJARDINE**

*Sales Representative*

519 438 5403

[tyler.desjardine@cushwakeswo.com](mailto:tyler.desjardine@cushwakeswo.com)

**CUSHMAN & WAKEFIELD  
SOUTHWESTERN ONTARIO**

850 Medway Park Dr, Suite 201

London, Ontario N6G 5C6

[www.cushwakeswo.com](http://www.cushwakeswo.com)

©2025 Cushman & Wakefield Southwestern Ontario, Real Estate Brokerage, Independently Owned and Operated. A Member of the Cushman & Wakefield Alliance.

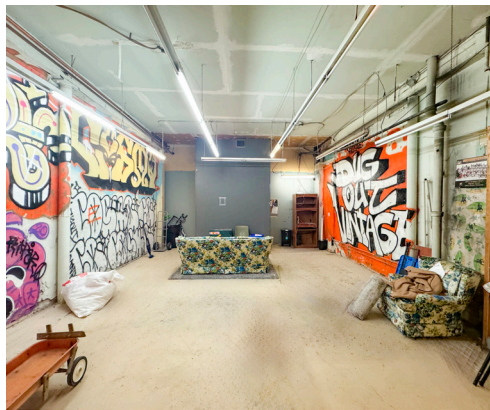
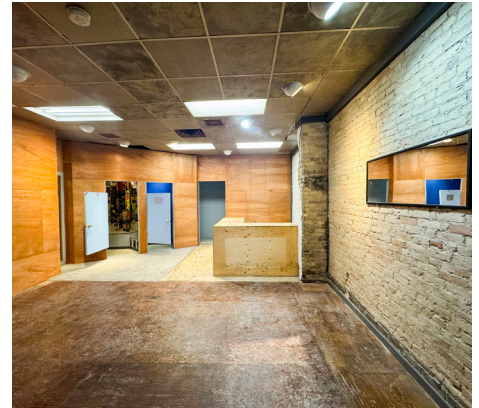
This information has been obtained from sources believed to be reliable but has not been verified. No warranty or representation, express or implied, is made as to the condition of the property (or properties) referenced herein or as to the accuracy or completeness of the information contained herein, and same is submitted subject to errors, omissions, change of price, rental or other conditions, withdrawal without notice, and to any special listing conditions imposed by the property owner(s). Any projections, opinions or estimates are subject to uncertainty and do not signify current or future property performance. All rights reserved.



# ABOUT THE PROPERTY

Prime commercial retail/office space available for lease directly on Dundas Street near Clarence Street in downtown London.

- **Additional rent is inclusive of common area maintenance and property taxes**
- **Zoning:** DA1\*D350 - Permits a wide range of uses
- Asking rent is approx. \$3,000 per month + Utilities + HST
- Main floor space plus lower level dry storage area
- Former clothing store
- Utilities are separately metered in the Tenant's name
- Excellent signage and exposure
- Plenty of windows and natural light
- Available immediately



**TYLER DESJARDINE**  
Sales Representative  
519 438 5403  
tyler.desjardine@cushwakeswo.com

**CUSHMAN & WAKEFIELD**  
SOUTHWESTERN ONTARIO  
850 Medway Park Dr, Suite 201  
London, Ontario N6G 5C6  
[www.cushwakeswo.com](http://www.cushwakeswo.com)

 **CUSHMAN & WAKEFIELD**  
Southwestern Ontario

©2025 Cushman & Wakefield Southwestern Ontario, Real Estate Brokerage, Independently Owned and Operated. A Member of the Cushman & Wakefield Alliance. This information has been obtained from sources believed to be reliable but has not been verified. No warranty or representation, express or implied, is made as to the condition of the property (or properties) referenced herein or as to the accuracy or completeness of the information contained herein, and same is submitted subject to errors, omissions, change of price, rental or other conditions, withdrawal without notice, and to any special listing conditions imposed by the property owner(s). Any projections, opinions or estimates are subject to uncertainty and do not signify current or future property performance. All rights reserved.