

AVAILABLE FOR LEASE OR SALE
100,000 - 350,000 SF BTS

Manufacturing or Distribution



1734 WHITESVILLE ROAD

LAGRANGE, GA 30240



PROPERTY HIGHLIGHTS



100,000 - 350,000 SF



Divisible to 100,000 SF



BTS Office



36' - 40' Clear Height



Dock High Doors - BTS



Drive-In Doors - BTS



ESFR Sprinklers



Auto Spaces - BTS



Trailer Spaces - BTS



BTS Power

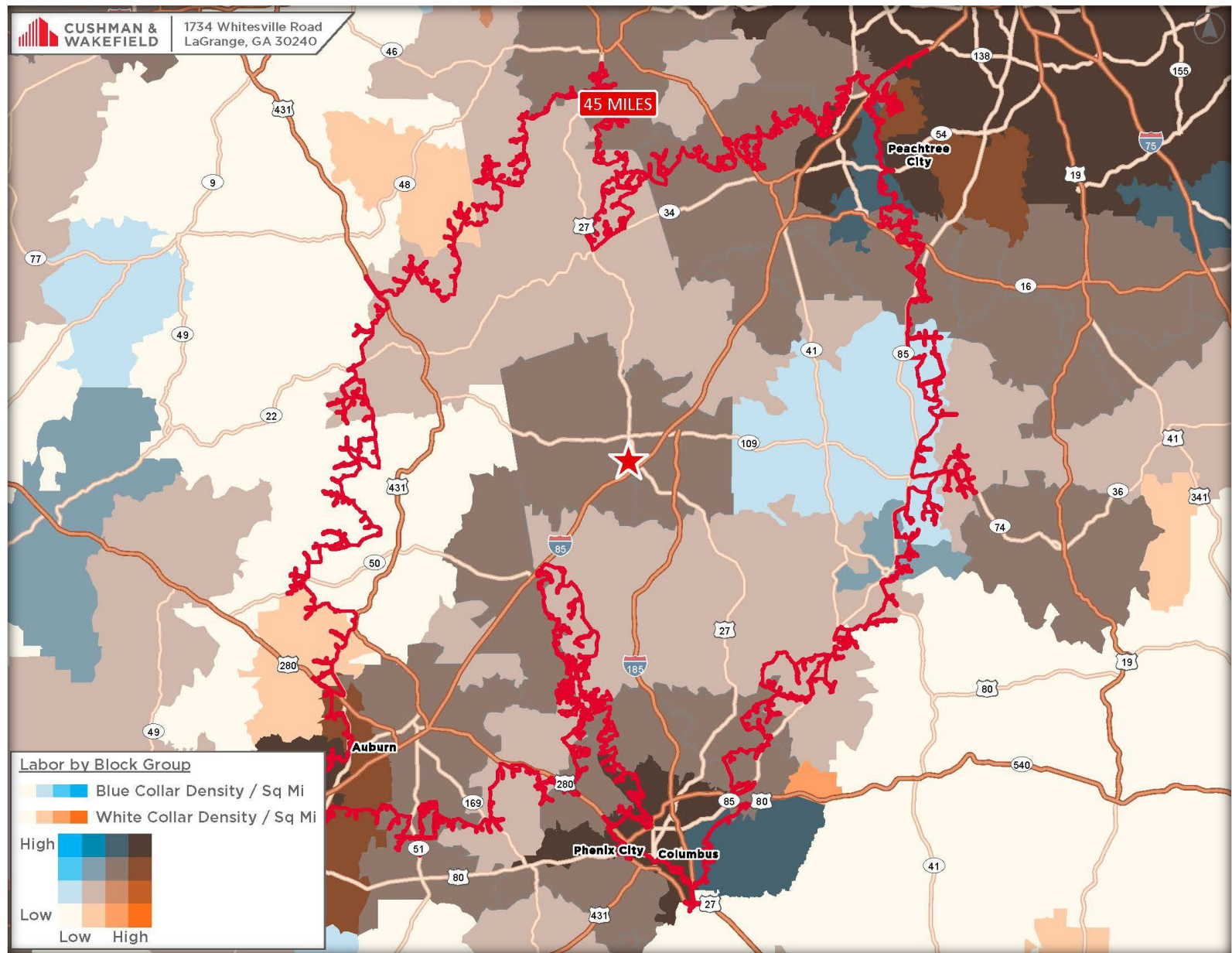
Georgia provides a statewide job tax credit that could benefit companies located at 1734 Whitesville Road.

A minimum of 10 net new jobs paying the minimum wage requirement is required to realize this benefit.

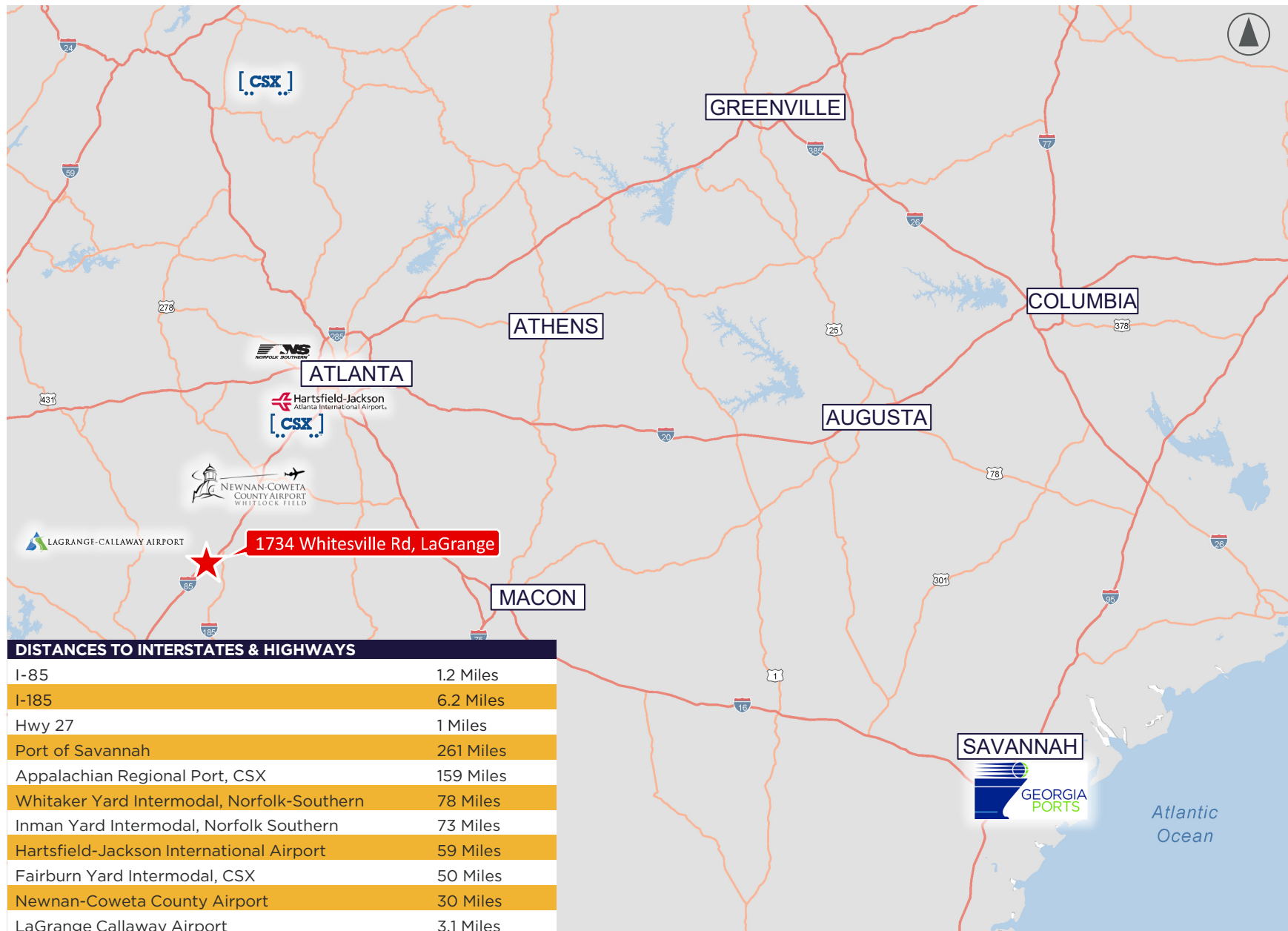
Troup County being tier 2, \$2,500, 100% of tax liability, excess to withholding up to \$3,000 per job 10 years.



BLUE COLLAR LABOR MAP



IN CLOSE PROXIMITY MAP



CONTACT INFORMATION



GILBERT VALDEZ, SIOR

Managing Director

T +1 404 853 5207

P +1 404 509 4482

gilbert.valdez@cushwake.com

CHASE WALKER

Senior Associate

T +1 404 460 8670

P +1 229 343 0933

chase.walker@cushwake.com

1180 PEACHTREE STREET NE, SUITE 3100

Atlanta, GA 30309

+1 404 875 1000

©2025 Cushman & Wakefield. All rights reserved. The information contained in this communication is strictly confidential. This information has been obtained from sources believed to be reliable but has not been verified. NO WARRANTY OR REPRESENTATION, EXPRESS OR IMPLIED, IS MADE AS TO THE CONDITION OF THE PROPERTY (OR PROPERTIES) REFERENCED HEREIN OR AS TO THE ACCURACY OR COMPLETENESS OF THE INFORMATION CONTAINED HEREIN, AND SAME IS SUBMITTED SUBJECT TO ERRORS, OMISSIONS, CHANGE OF PRICE, RENTAL OR OTHER CONDITIONS, WITHDRAWAL WITHOUT NOTICE, AND TO ANY SPECIAL LISTING CONDITIONS IMPOSED BY THE PROPERTY OWNER(S). ANY PROJECTIONS, OPINIONS OR ESTIMATES ARE SUBJECT TO UNCERTAINTY AND DO NOT SIGNIFY CURRENT OR FUTURE PROPERTY PERFORMANCE.