

615

2nd Avenue

Sublease at Broderick
2,231 RSF

Furnished Space in a
Historic Downtown Building

Seattle, Washington

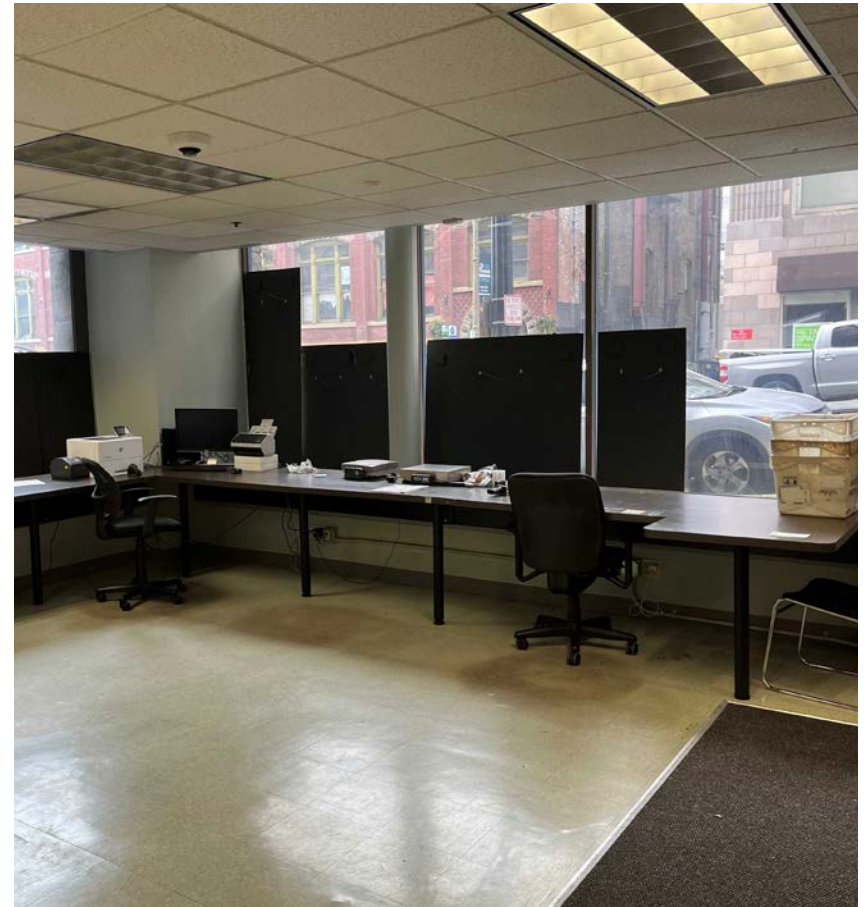
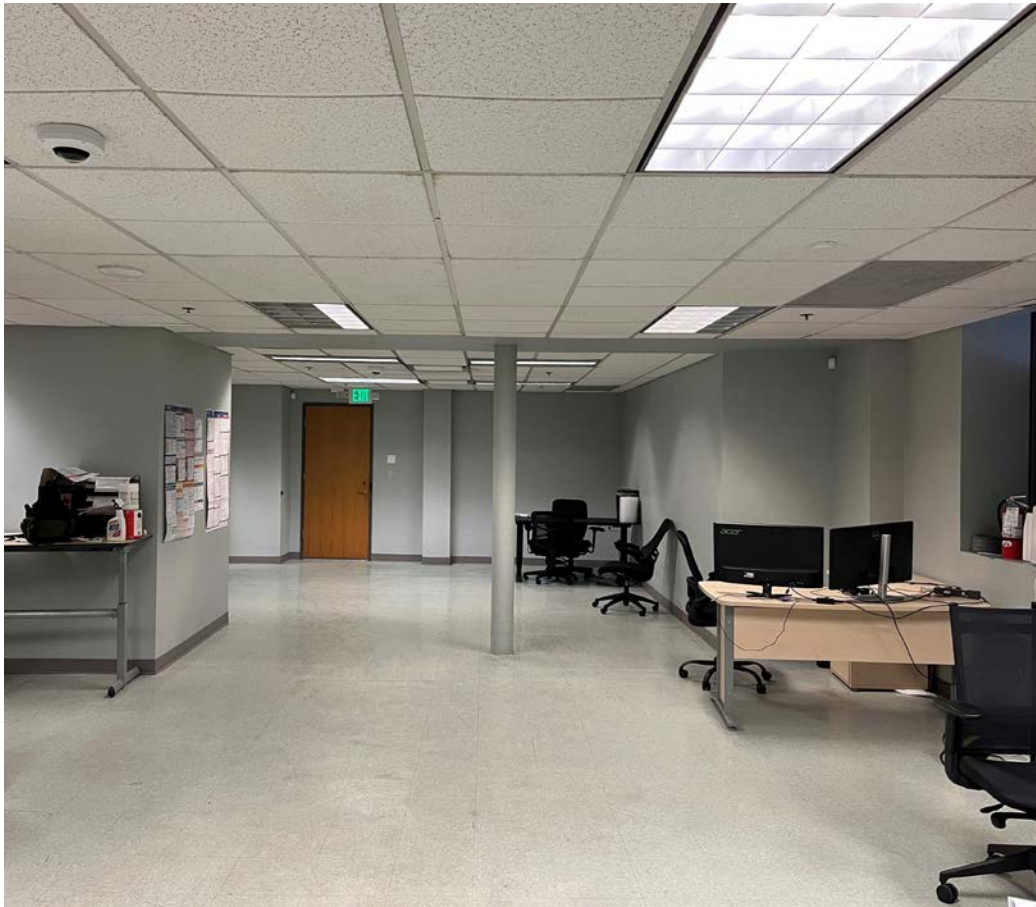


AVAILABILITY

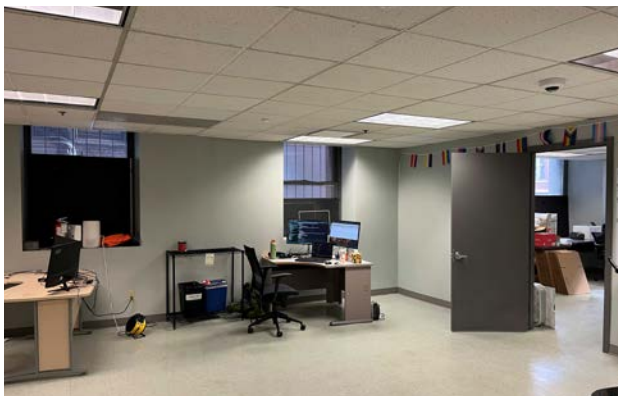
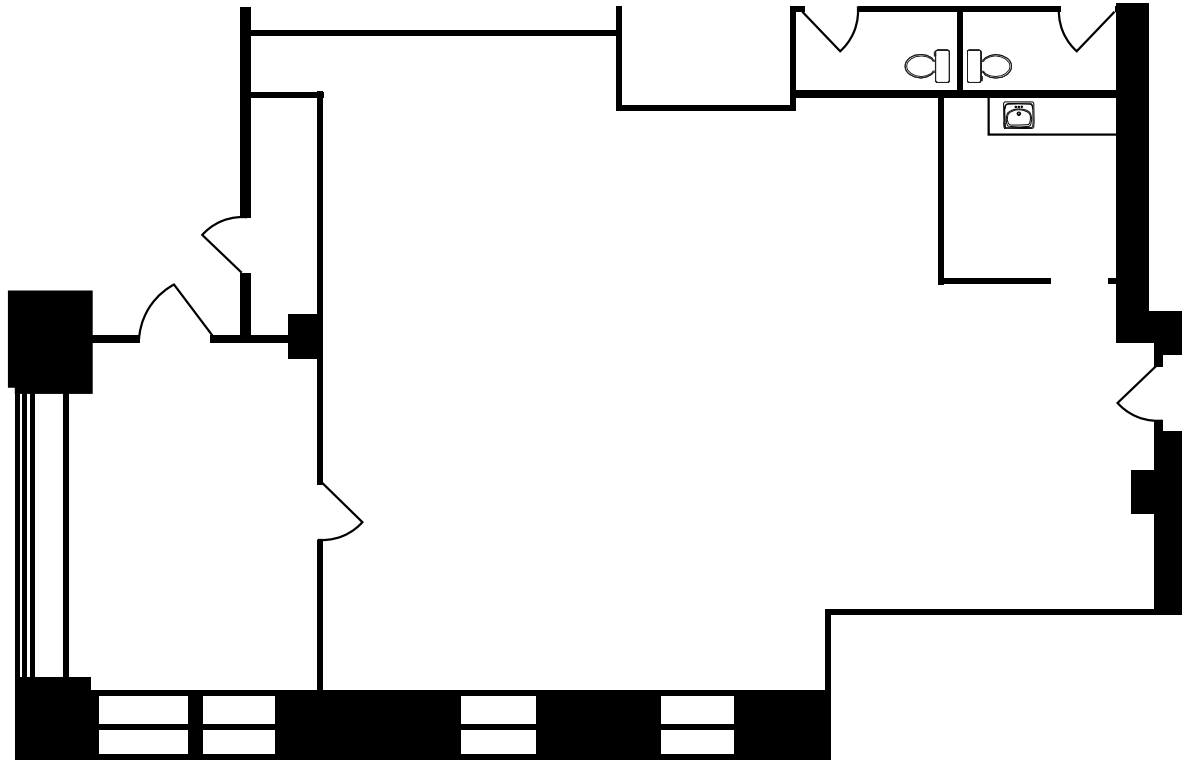
SIZE:	2,231 RSF
TERM:	Through 3/31/2028 (longer term available)
RATE:	Withheld

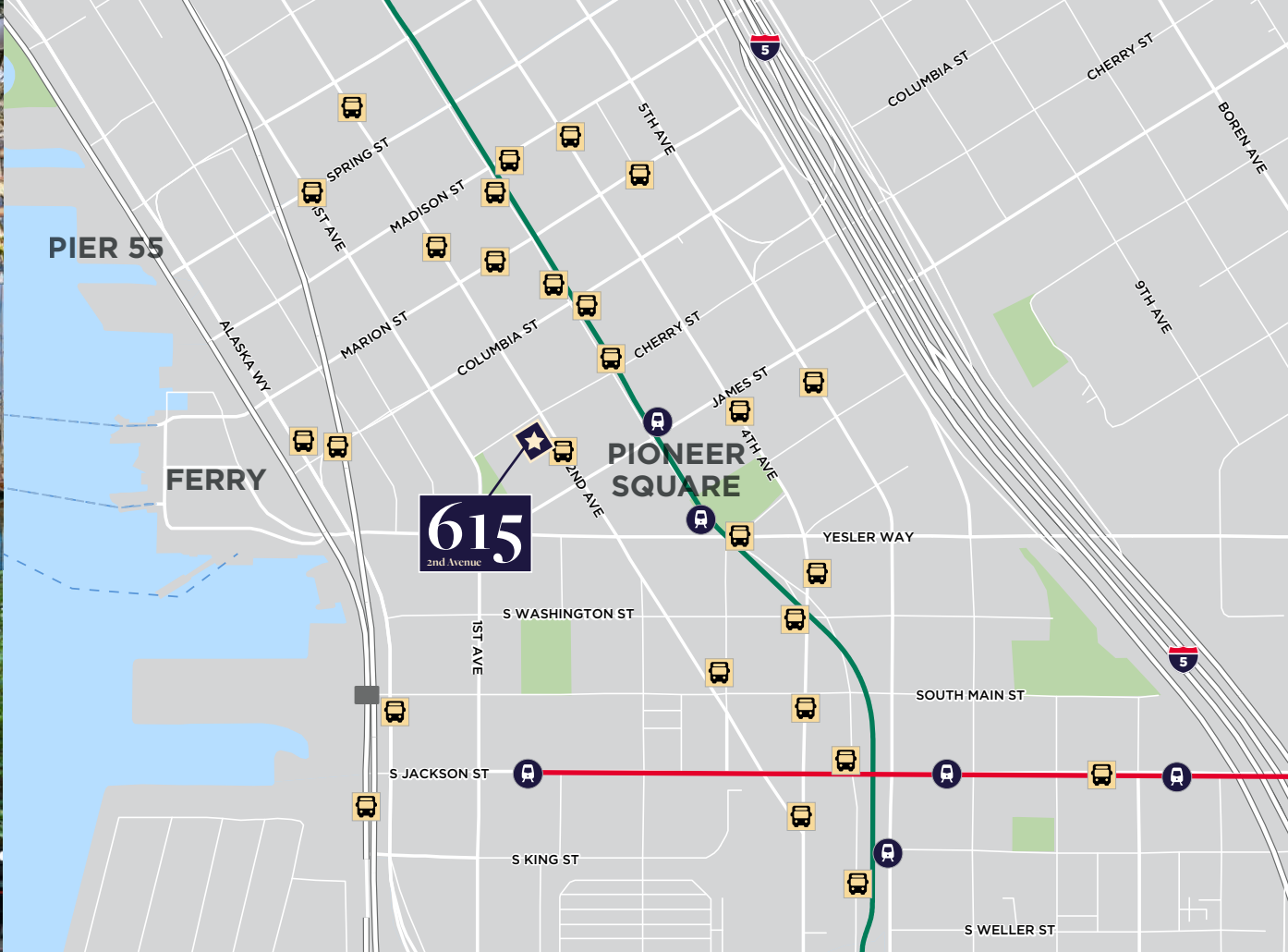
Features

- Second generation, furnished space in a historic downtown building
- Within walking distance to Pioneer Square and the waterfront
- Great access to public transportation
- Surrounded by popular dining and retail spots



FLOOR PLAN





615

2nd Avenue

SEATTLE, WA

LEAH MASSON

Senior Director

+1 206 215 9803

leah.masson@cushwake.com

ELLEN AKOPYAN

Associate

+1 206 800 1788

ellen.akopyan@cushwake.com

cushmanwakefield.com



©2025 Cushman & Wakefield. All rights reserved. The information contained in this communication is strictly confidential. This information has been obtained from sources believed to be reliable but has not been verified. NO WARRANTY OR REPRESENTATION, EXPRESS OR IMPLIED, IS MADE AS TO THE CONDITION OF THE PROPERTY (OR PROPERTIES) REFERENCED HEREIN OR AS TO THE ACCURACY OR COMPLETENESS OF THE INFORMATION CONTAINED HEREIN, AND SAME IS SUBMITTED SUBJECT TO ERRORS, OMISSIONS, CHANGE OF PRICE, RENTAL OR OTHER CONDITIONS, WITHDRAWAL WITHOUT NOTICE, AND TO ANY SPECIAL LISTING CONDITIONS IMPOSED BY THE PROPERTY OWNER(S). ANY PROJECTIONS, OPINIONS OR ESTIMATES ARE SUBJECT TO UNCERTAINTY AND DO NOT SIGNIFY CURRENT OR FUTURE PROPERTY PERFORMANCE.