

FOR LEASE AND SALE

CRAIG EXECUTIVE CENTER

1820-1866 CRAIG ROAD

MARYLAND HEIGHTS, MO 63146



**CUSHMAN &
WAKEFIELD**

CRAIG EXECUTIVE CENTER

1820-1866 Craig Road, Maryland Heights, MO 63146

PROPERTY HIGHLIGHTS

1,009 - 8,196 RSF Available

Asking Rate: \$18.00/SF Full Service

Sale Price: Call for Pricing

- Medical office suites available for immediate occupancy
- Exterior Signage Available
- Great Westport Location
- Close Proximity to Westport Plaza and Other Area Amenities
- Outstanding Visibility on Craig Road at Borman
- 4/1,000 parking ratio

SPACE AVAILABILITY

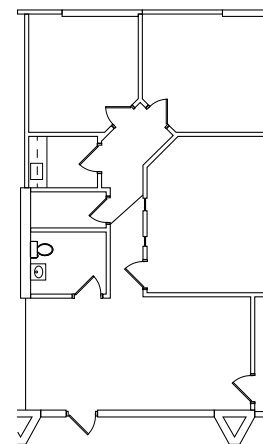
Suite	RSF	Availability
1826	1,246	Now
1840	1,009	Now
1848	8,196	Now
1852	1,749	Now
1860	6,611	Now

FLOOR PLAN

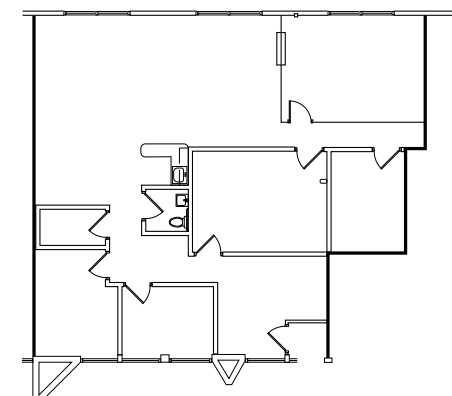
SUITE 1826 - 1,246 RSF



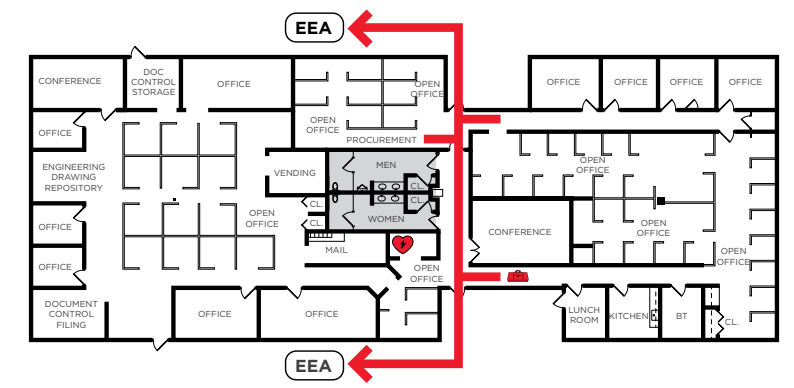
Suite 1840 - 1,009 RSF



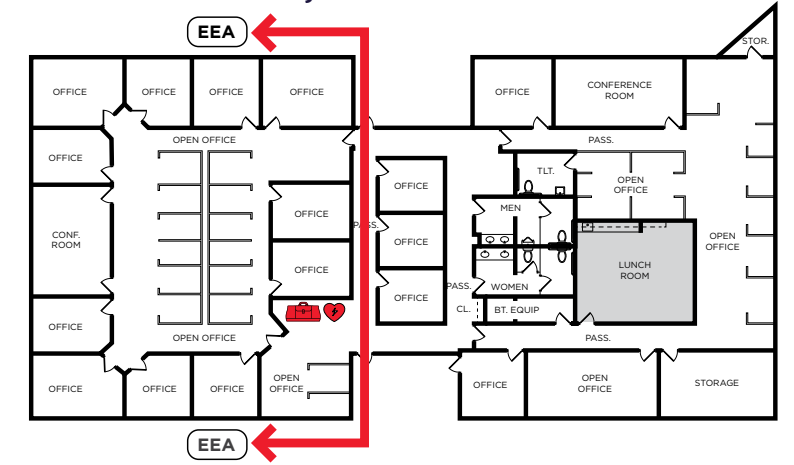
SUITE 1852 - 1,749 RSF

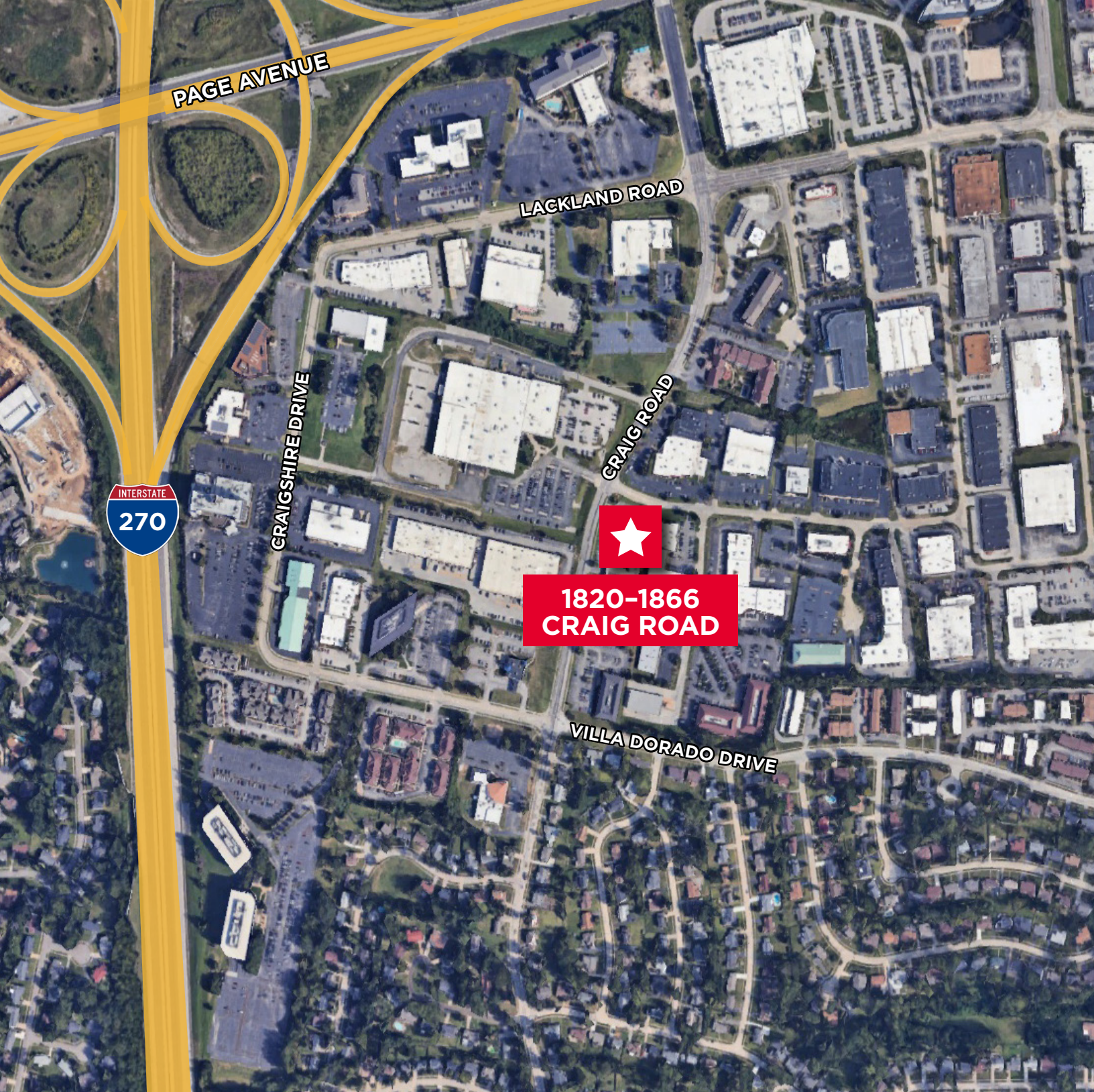


SUITE 1848 - 8,196 RSF



SUITE 1860 - 6,611 RSF





FOR MORE INFORMATION, CONTACT:

MICHAEL BURNS

Senior Associate

+1 314 392 0258

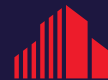
michael.burns@cushwake.com

7700 Forsyth Blvd., Suite 1210

St. Louis, MO 63105

+1 314 862 7100

cushmanwakefield.com



**CUSHMAN &
WAKEFIELD**

©2025 Cushman & Wakefield. All rights reserved. The information contained in this communication is strictly confidential. This information has been obtained from sources believed to be reliable but has not been verified. NO WARRANTY OR REPRESENTATION, EXPRESS OR IMPLIED, IS MADE AS TO THE CONDITION OF THE PROPERTY (OR PROPERTIES) REFERENCED HEREIN OR AS TO THE ACCURACY OR COMPLETENESS OF THE INFORMATION CONTAINED HEREIN, AND SAME IS SUBMITTED SUBJECT TO ERRORS, OMISSIONS, CHANGE OF PRICE, RENTAL OR OTHER CONDITIONS, WITHDRAWAL WITHOUT NOTICE, AND TO ANY SPECIAL LISTING CONDITIONS IMPOSED BY THE PROPERTY OWNER(S). ANY PROJECTIONS, OPINIONS OR ESTIMATES ARE SUBJECT TO UNCERTAINTY AND DO NOT SIGNIFY CURRENT OR FUTURE PROPERTY PERFORMANCE.