



**CUSHMAN &
WAKEFIELD**

Southwestern Ontario

FOR LEASE

224 CENTRAL AVENUE

London, ON



PRIME CENTRAL LONDON RETAIL/OFFICE SPACE AVAILABLE

ASKING RENT

\$26.95 PSF
SEMI GROSS

AVAILABLE SPACE

2,317
SF

ZONING - BDC(1)

**BUSINESS DISTRICT
COMMERCIAL ZONE**

TYLER DESJARDINE

Sales Representative

519 438 5403

tyler.desjardine@cushwakeswo.com

**CUSHMAN & WAKEFIELD
SOUTHWESTERN ONTARIO**

850 Medway Park Dr, Suite 201

London, Ontario N6G 5C6

www.cushwakeswo.com

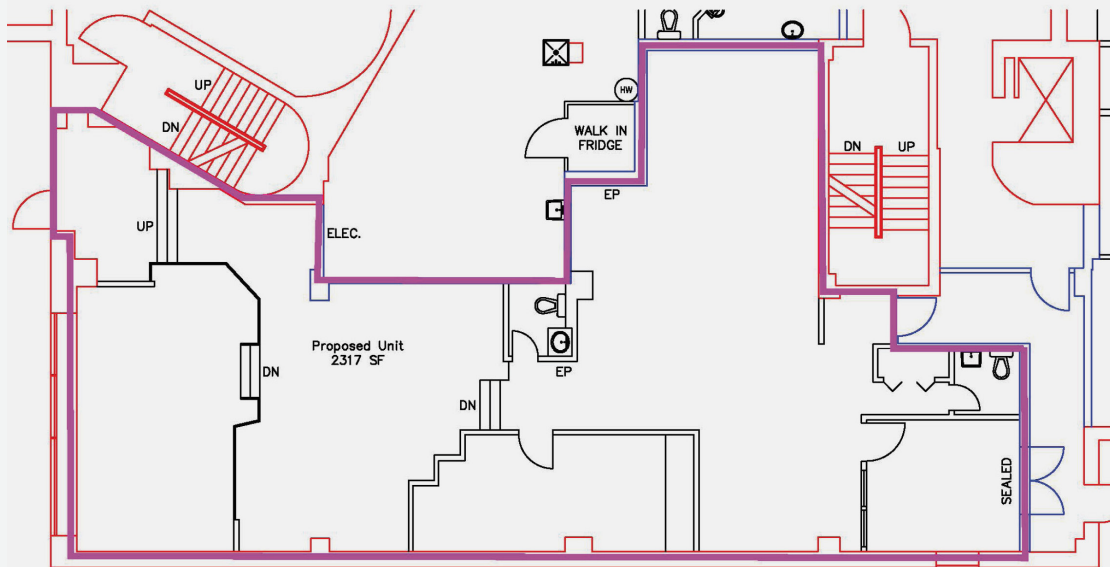
©2025 Cushman & Wakefield Southwestern Ontario, Real Estate Brokerage, Independently Owned and Operated. A Member of the Cushman & Wakefield Alliance.

This information has been obtained from sources believed to be reliable but has not been verified. No warranty or representation, express or implied, is made as to the condition of the property (or properties) referenced herein or as to the accuracy or completeness of the information contained herein, and same is submitted subject to errors, omissions, change of price, rental or other conditions, withdrawal without notice, and to any special listing conditions imposed by the property owner(s). Any projections, opinions or estimates are subject to uncertainty and do not signify current or future property performance. All rights reserved.

ABOUT THE PROPERTY

Prime central London retail/office/commercial space available for lease, located at the corner of Richmond Street and Central Avenue.

- **Asking rent is semi gross + Hydro + HST, with an increase over calendar year 2024 for operating expenses and taxes**
- **Zoning:** BDC(1) - Permits a wide range of uses
- **Parking:** Available on-site
- **Signage:** Available
- Space has been recently updated
- Hydro separately metered in Tenant's name
- Located across the street from Victoria Park, Starbucks, Running Room, Hangar 8, Accents, Andrew Douglas Clothier etc.



TYLER DESJARDINE

Sales Representative

519 438 5403

tyler.desjardine@cushwakeswo.com

**CUSHMAN & WAKEFIELD
SOUTHWESTERN ONTARIO**

850 Medway Park Dr, Suite 201
London, Ontario N6G 5C6

www.cushwakeswo.com

©2025 Cushman & Wakefield Southwestern Ontario, Real Estate Brokerage, Independently Owned and Operated. A Member of the Cushman & Wakefield Alliance.

This information has been obtained from sources believed to be reliable but has not been verified. No warranty or representation, express or implied, is made as to the condition of the property (or properties) referenced herein or as to the accuracy or completeness of the information contained herein, and same is submitted subject to errors, omissions, change of price, rental or other conditions, withdrawal without notice, and to any special listing conditions imposed by the property owner(s). Any projections, opinions or estimates are subject to uncertainty and do not signify current or future property performance. All rights reserved.