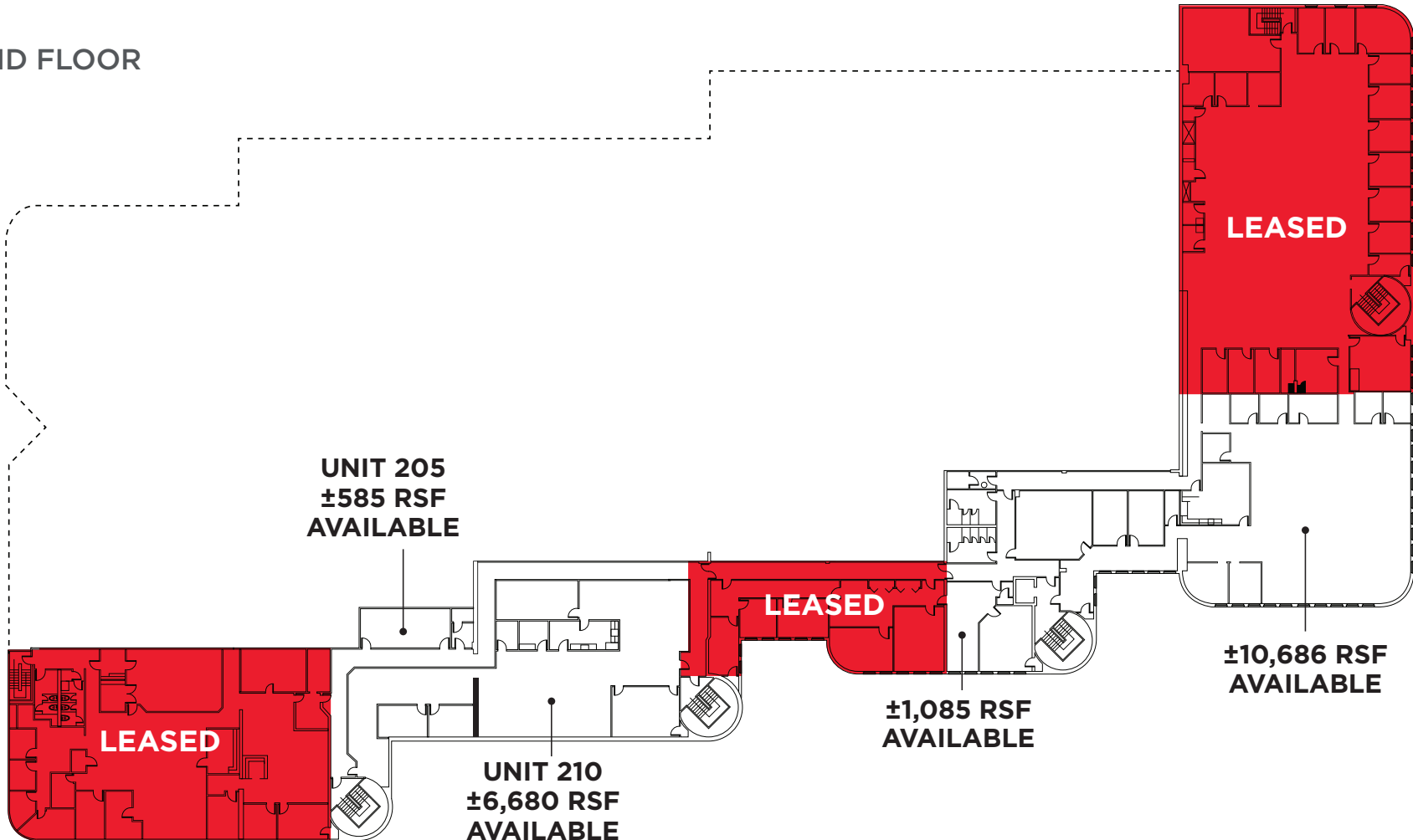


SECOND FLOOR



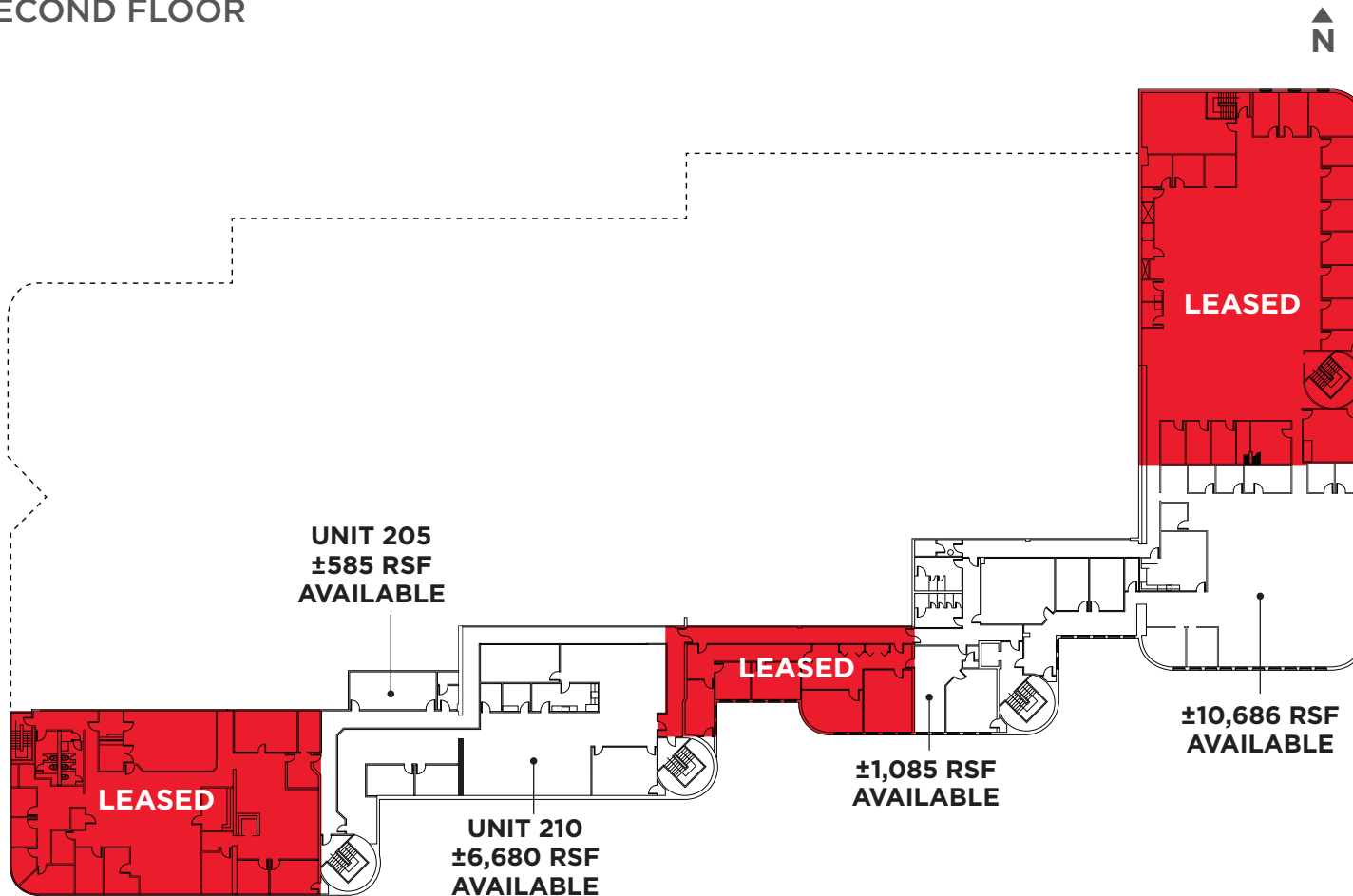
Thomas P. Farrelly, SIOR
Executive Managing Director
thomas.farrelly@cushwake.com

Denis C.J. Dancoes II
Executive Director
denis.dancoes@cushwake.com

Sue Ann Johnson
Managing Director
sueann.johnson@cushwake.com

Cushman & Wakefield of New Hampshire, Inc.
900 Elm Street, Suite 1301, Manchester, NH 03101
+1 603 628 2800
cushmanwakefield.com

SECOND FLOOR



Above plan may not reflect current conditions.

Thomas P. Farrelly, SIOR
Executive Managing Director
thomas.farrelly@cushwake.com

Denis C.J. Dancoes II
Executive Director
denis.dancoes@cushwake.com

Sue Ann Johnson
Managing Director
sueann.johnson@cushwake.com

**Cushman & Wakefield of
New Hampshire, Inc.**
900 Elm Street, Suite 1301
Manchester, NH 03101
+1 603 628 2800
cushmanwakefield.com

©2025 Cushman & Wakefield. All rights reserved.
The information contained in this communication is strictly confidential. This information has been obtained from sources believed to be reliable but has not been verified. NO WARRANTY OR REPRESENTATION, EXPRESS OR IMPLIED, IS MADE AS TO THE CONDITION OF THE PROPERTY (OR PROPERTIES) REFERENCED HEREIN OR AS TO THE ACCURACY OR COMPLETENESS OF THE INFORMATION CONTAINED HEREIN, AND SAME IS SUBMITTED SUBJECT TO ERRORS, OMISSIONS, CHANGE OF PRICE, RENTAL OR OTHER CONDITIONS, WITHDRAWAL WITHOUT NOTICE, AND TO ANY SPECIAL LISTING CONDITIONS IMPOSED BY THE PROPERTY OWNER(S). ANY PROJECTIONS, OPINIONS OR ESTIMATES ARE SUBJECT TO UNCERTAINTY AND DO NOT SIGNIFY CURRENT OR FUTURE PROPERTY PERFORMANCE.