

# 101

## STRATFORD

±15,200 SF | **Available for Lease.**

101 S STRATFORD RD, WINSTON-SALEM, NC 27104





## Property Highlights

Available Size: Up to  $\pm 15,200$  SF (Divisible)

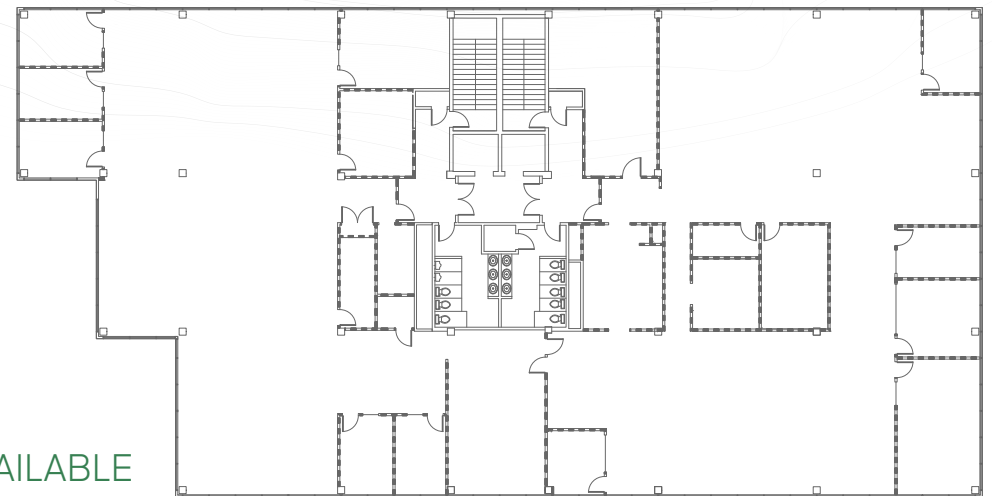
Building Size: 75,010 SF

Parking: Free Surface Parking and Tabletop Deck Parking



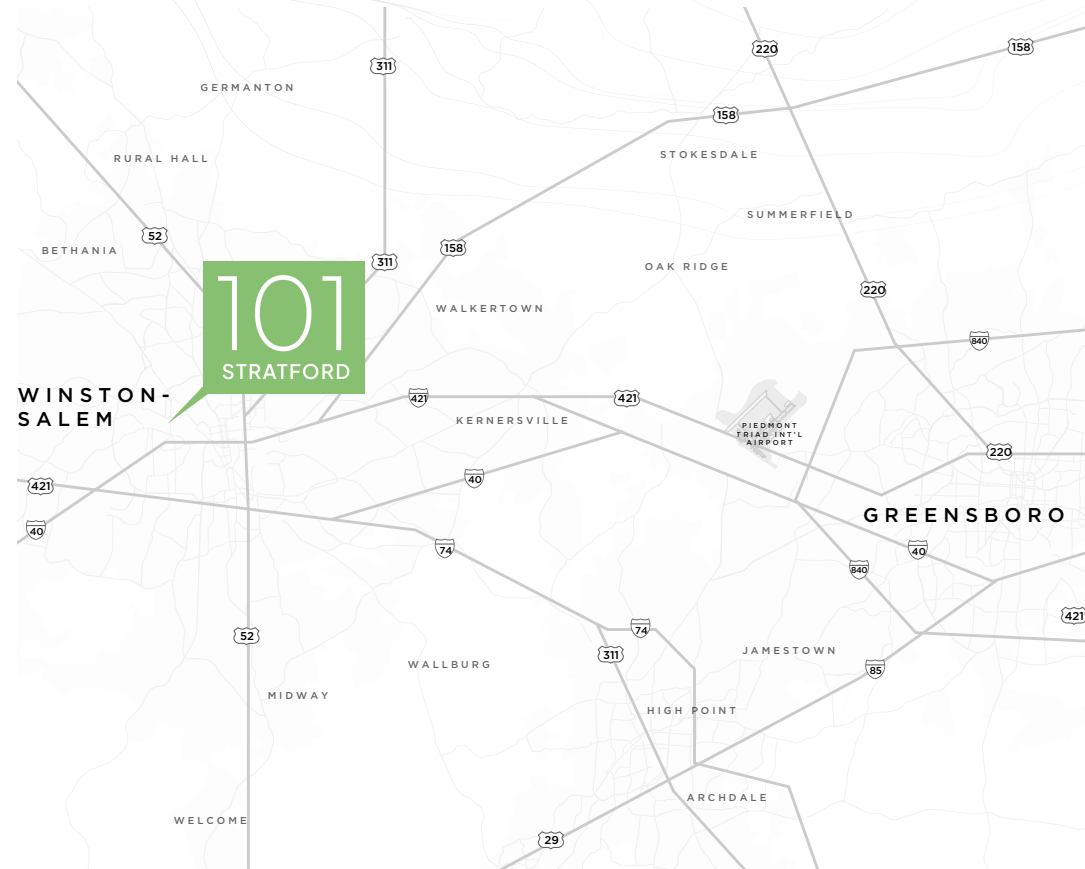
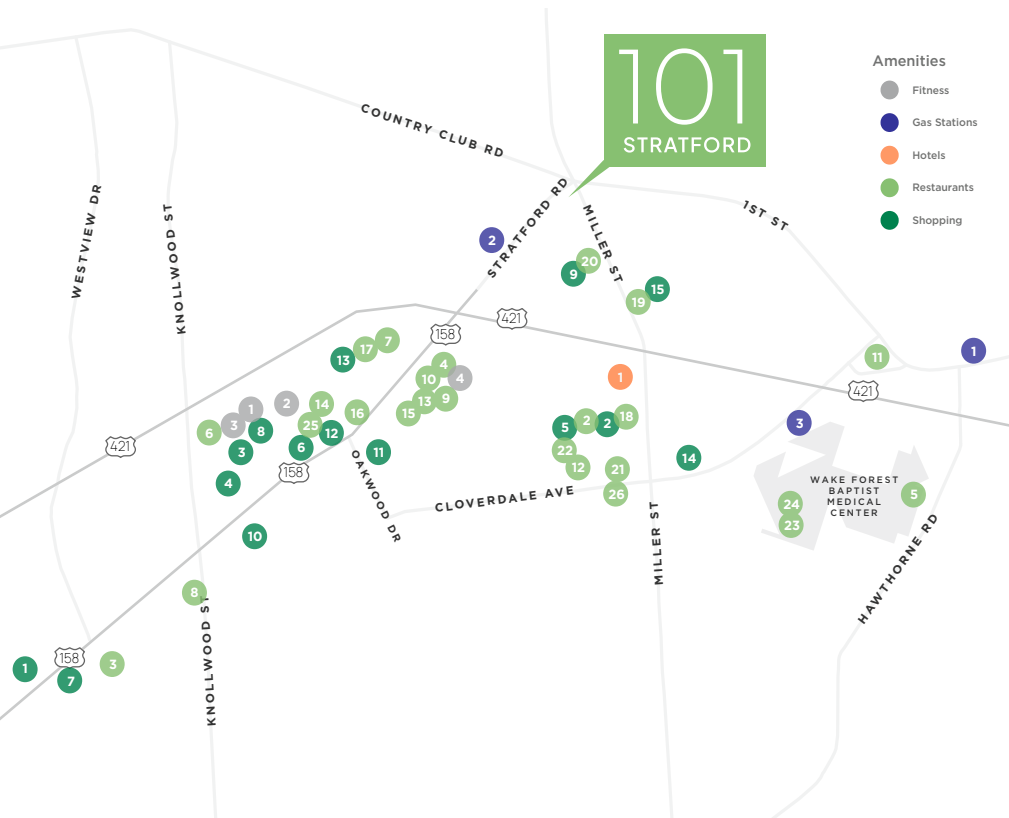
## Property Overview

101 S Stratford is a Class A office space located at the Five Points intersection of Stratford Road in Winston-Salem.



**THIRD FLOOR**  
 $\pm 15,200$  SF AVAILABLE

# Location & Amenities



## RESTAURANTS

- |                            |                           |                             |
|----------------------------|---------------------------|-----------------------------|
| 1 Another Broken Egg Cafe  | 9 Firehouse Subs          | 18 Panera Bread             |
| 2 Barberitos               | 10 Gigi's Cupcakes        | 19 Sabor Latin Street Grill |
| 3 Carrabba's Italian Grill | 11 Hardee's               | 20 Starbucks                |
| 4 CAVA                     | 12 Jersey Mike's          | 21 Starbucks                |
| 5 Chick-fil-A              | 13 Jimmy John's           | 22 Starbucks                |
| 6 Chick-fil-A              | 14 Kilwins                | 23 Starbucks                |
| 7 Chopt Creative Salad     | 15 Krispy Kreme Doughnuts | 24 SUBWAY                   |
| 8 Domino's Pizza           | 16 McDonald's             | 25 The Loop Pizza Grill     |
|                            | 17 Moe's Southwest Grill  | 26 Wendy's                  |

## FITNESS

- 1 Club Pilates
- 2 O2 Fitness
- 3 Orangetheory Fitness
- 4 Pure Barre

## SHOPPING

- 1 Batteries Plus Bulbs
- 2 Dollar Tree
- 3 Golf Galaxy

- 4 Harris Teeter
- 5 Harris Teeter
- 6 Jos. A. Bank Clothiers
- 7 Napa Auto Parts
- 8 Pet Supermarket
- 9 Publix Super Markets
- 10 Sherwin-Williams
- 11 Sherwin-Williams
- 12 Sleep Number

- 13 Trader Joe's
- 14 Walgreens
- 15 Whole Foods Market

## GAS STATIONS

- 1 BP
- 2 Exxon Mobil
- 3 Shell Oil

## HOTELS

- 1 Holiday Inn Express



# 101

STRATFORD

For more information, contact:

Jason Ofsanko  
Executive Director  
+1 336 812 3300  
[jason.ofsanko@cushwake.com](mailto:jason.ofsanko@cushwake.com)

Bobby Finch  
Executive Managing Director  
+1 336 812 3303  
[bobby.finch@cushwake.com](mailto:bobby.finch@cushwake.com)



©2025 Cushman & Wakefield. All rights reserved. The information contained in this communication is strictly confidential. This information has been obtained from sources believed to be reliable but has not been verified. NO WARRANTY OR REPRESENTATION, EXPRESS OR IMPLIED, IS MADE AS TO THE CONDITION OF THE PROPERTY (OR PROPERTIES) REFERENCED HEREIN OR AS TO THE ACCURACY OR COMPLETENESS OF THE INFORMATION CONTAINED HEREIN, AND SAME IS SUBMITTED SUBJECT TO ERRORS, OMISSIONS, CHANGE OF PRICE, RENTAL OR OTHER CONDITIONS, WITHDRAWAL WITHOUT NOTICE, AND TO ANY SPECIAL LISTING CONDITIONS IMPOSED BY THE PROPERTY OWNER(S). ANY PROJECTIONS, OPINIONS OR ESTIMATES ARE SUBJECT TO UNCERTAINTY AND DO NOT SIGNIFY CURRENT OR FUTURE PROPERTY PERFORMANCE.