

101

STRATFORD

±15,200 SF | Available for Lease

101 S STRATFORD RD, WINSTON-SALEM, NC 27104





Property Highlights

Available Size: Up to $\pm 15,200$ SF (Divisible)

Building Size: 75,010 SF

Parking: Free Surface Parking and Tabletop Deck Parking

Available Now for Immediate Occupancy

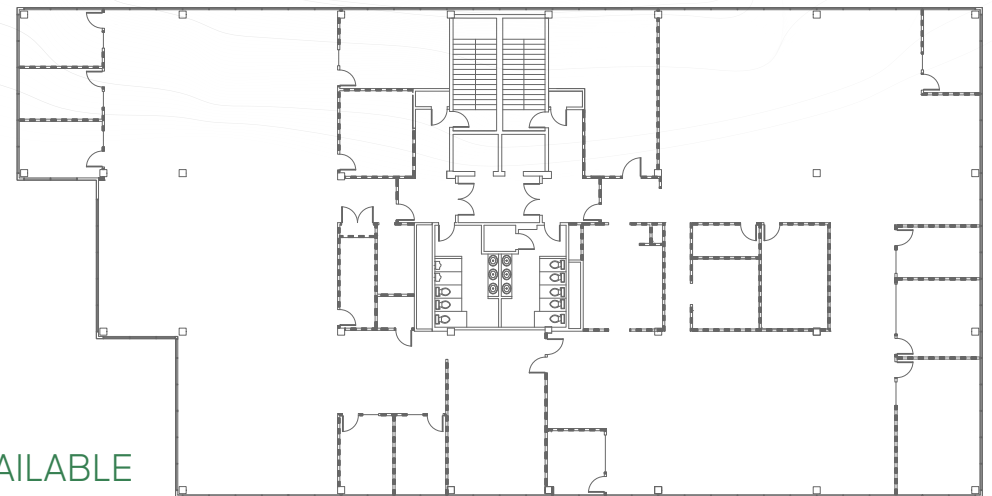
Within Walking Distance to Nearby Retail, Restaurants, and Other Area Amenities



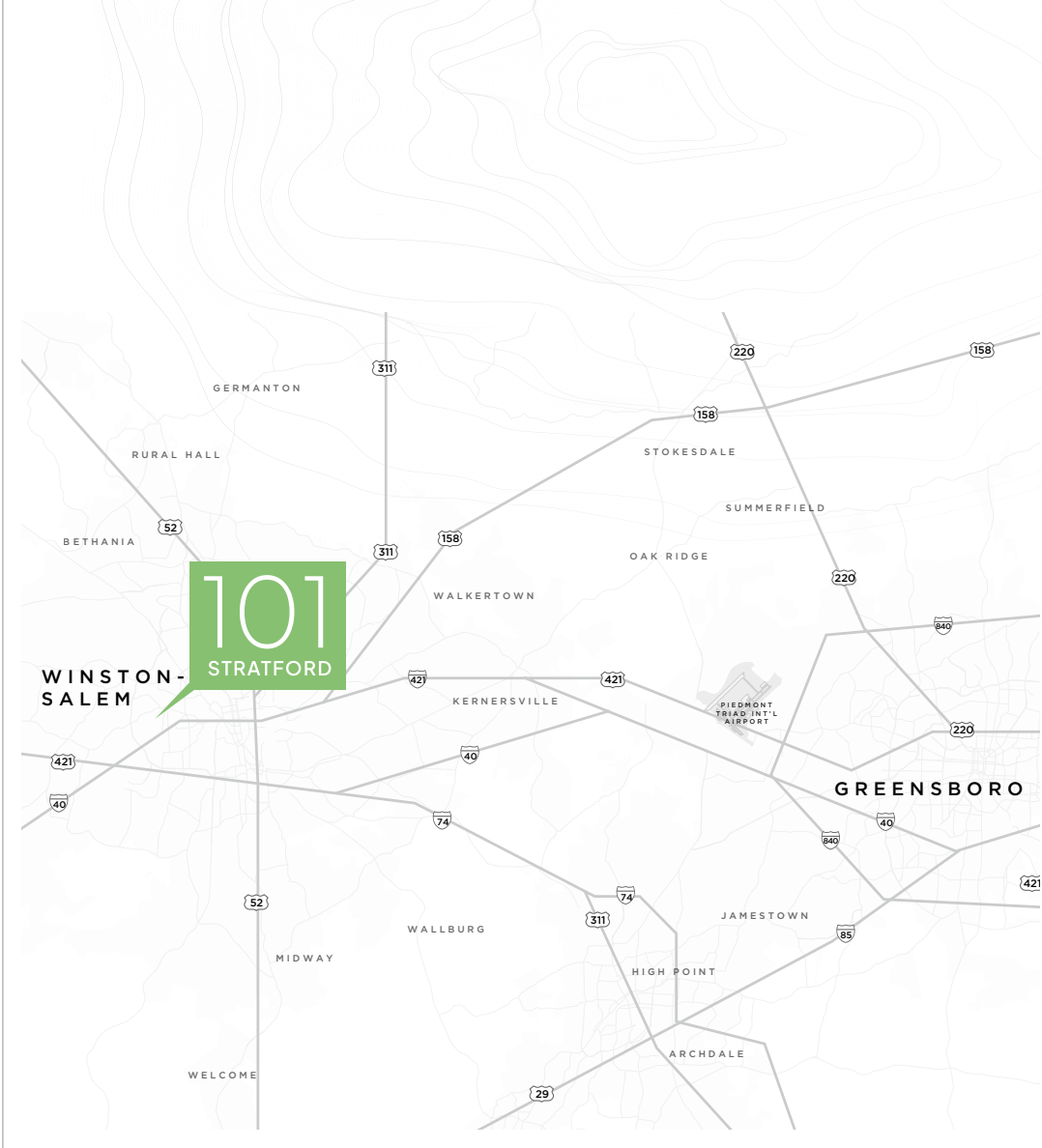
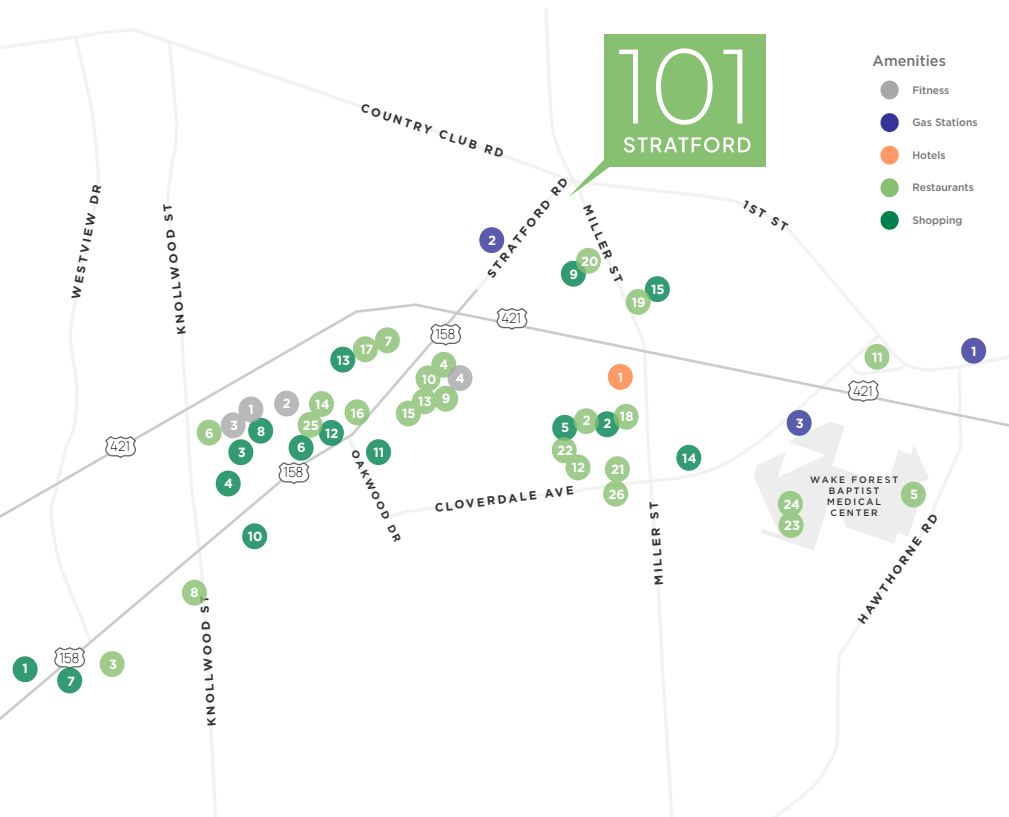
Property Overview

101 S Stratford is a highly visible, professionally managed Class A office space located at the Five Points intersection of Stratford Road in Winston-Salem. The entire third floor will be available on September 1, 2025.

THIRD FLOOR
 $\pm 15,200$ SF AVAILABLE



Location & Amenities



RESTAURANTS

- | | | |
|----------------------------|---------------------------|-----------------------------|
| 1 Another Broken Egg Cafe | 9 Firehouse Subs | 18 Panera Bread |
| 2 Barberitos | 10 Gigi's Cupcakes | 19 Sabor Latin Street Grill |
| 3 Carrabba's Italian Grill | 11 Hardee's | 20 Starbucks |
| 4 CAVA | 12 Jersey Mike's | 21 Starbucks |
| 5 Chick-fil-A | 13 Jimmy John's | 22 Starbucks |
| 6 Chick-fil-A | 14 Kilwins | 23 Starbucks |
| 7 Chopt Creative Salad | 15 Krispy Kreme Doughnuts | 24 SUBWAY |
| 8 Domino's Pizza | 16 McDonald's | 25 The Loop Pizza Grill |
| | 17 Moe's Southwest Grill | 26 Wendy's |

FITNESS

- 1 Club Pilates
- 2 O2 Fitness
- 3 Orangetheory Fitness
- 4 Pure Barre

SHOPPING

- 1 Batteries Plus Bulbs
- 2 Dollar Tree
- 3 Golf Galaxy

- 4 Harris Teeter
- 5 Harris Teeter
- 6 Jos. A. Bank Clothiers
- 7 Napa Auto Parts
- 8 Pet Supermarket
- 9 Publix Super Markets
- 10 Sherwin-Williams
- 11 Sherwin-Williams
- 12 Sleep Number

- 13 Trader Joe's
- 14 Walgreens
- 15 Whole Foods Market

GAS STATIONS

- 1 BP
- 2 Exxon Mobil
- 3 Shell Oil

HOTELS

- 1 Holiday Inn Express



101

STRATFORD

For more information, contact:

Jason Ofsanko
Executive Director
+1 336 812 3300
jason.ofsanko@cushwake.com

Bobby Finch
Executive Managing Director
+1 336 812 3303
bobby.finch@cushwake.com

Seth Constable
Senior Associate
+1 336 885 7815
seth.constable@cushwake.com



©2025 Cushman & Wakefield. All rights reserved. The information contained in this communication is strictly confidential. This information has been obtained from sources believed to be reliable but has not been verified. NO WARRANTY OR REPRESENTATION, EXPRESS OR IMPLIED, IS MADE AS TO THE CONDITION OF THE PROPERTY (OR PROPERTIES) REFERENCED HEREIN OR AS TO THE ACCURACY OR COMPLETENESS OF THE INFORMATION CONTAINED HEREIN, AND SAME IS SUBMITTED SUBJECT TO ERRORS, OMISSIONS, CHANGE OF PRICE, RENTAL OR OTHER CONDITIONS, WITHDRAWAL WITHOUT NOTICE, AND TO ANY SPECIAL LISTING CONDITIONS IMPOSED BY THE PROPERTY OWNER(S). ANY PROJECTIONS, OPINIONS OR ESTIMATES ARE SUBJECT TO UNCERTAINTY AND DO NOT SIGNIFY CURRENT OR FUTURE PROPERTY PERFORMANCE.