



PS BUSINESS PARK, SAN RAMON
SMALL, AFFORDABLE OFFICE SUITES FOR LEASE

2570-2580 SAN RAMON VALLEY BLVD.
SAN RAMON, CA



2570-2580 SAN RAMON VALLEY BLVD. SAN RAMON, CA

Property Highlights

Small office suites, featuring building sign identity, abundant parking and access to amenities and freeways.

Parking:

Ample on-site parking ensures convenience for tenants and visitors alike.

Proximity to Freeway:

Located just minutes from I-680, North and South

Proximity to Amenities:

Surrounded by a variety of retail, dining, and service options.

Signage:

Prominent building signage offers excellent visibility and branding opportunities for tenants.



PROPERTY AVAILABILITY SUMMARY

Suite #	A201	A206	B209	B210
Photo				
Size	1, 729 SF	1,560 SF	1,170 SF	1,170 SF

PROPERTY AVAILABILITY PHOTOS

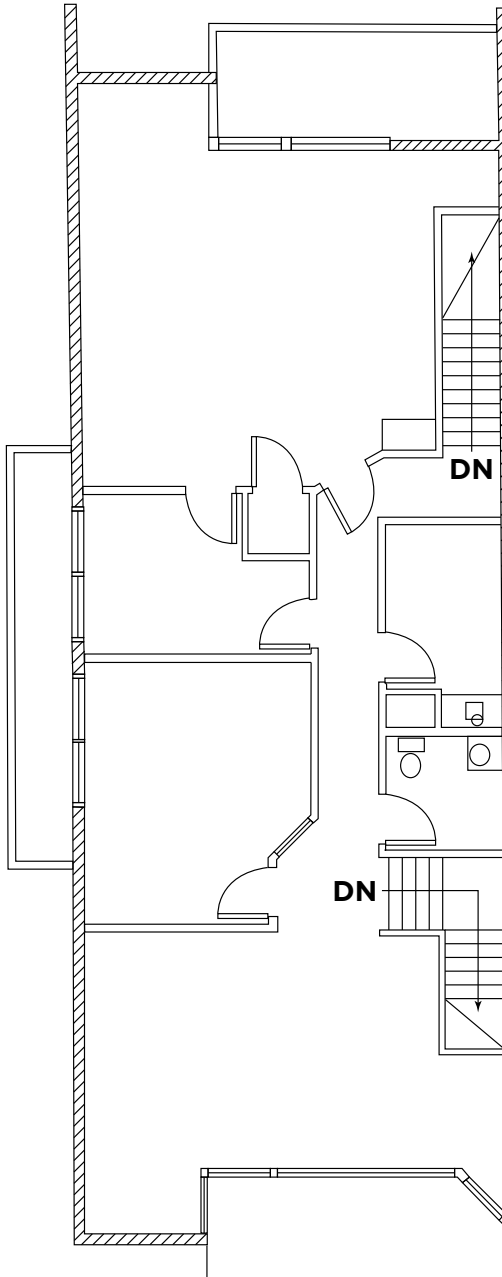
A201

**PAINT AND CARPET
IS BEING REPLACED.
NEW IMAGES COMING SOON.**

FLOOR PLAN

A201

1,729 SF



PROPERTY AVAILABILITY PHOTOS

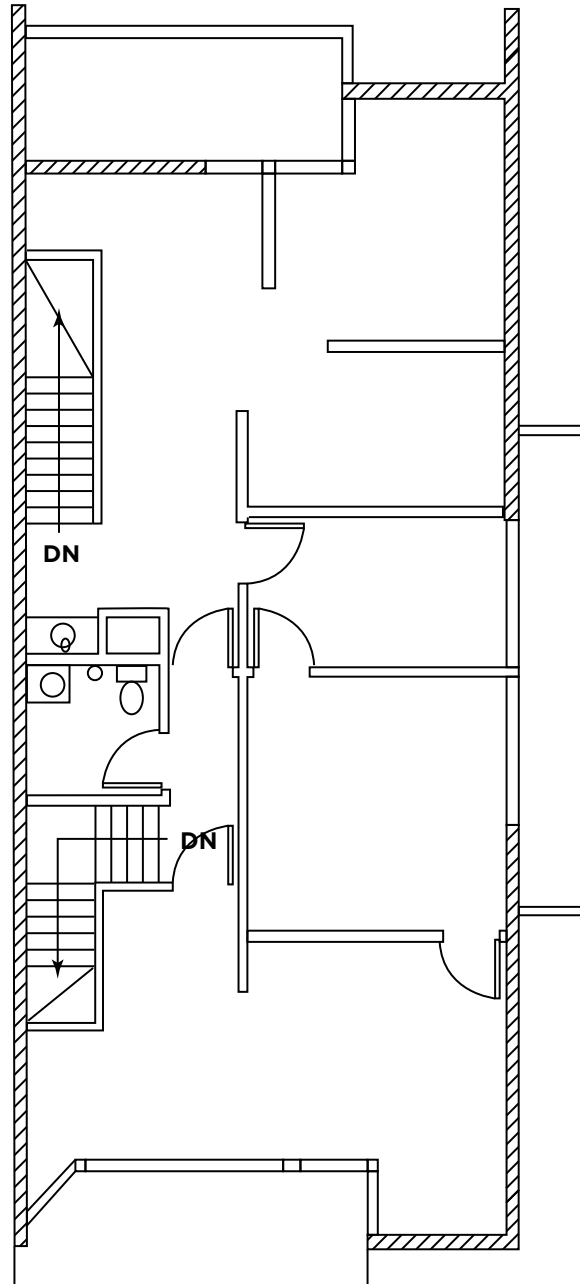
A206



FLOOR PLAN

A206

1,560 SF



PROPERTY AVAILABILITY PHOTOS

B209





FLOOR PLAN

B209

1,170 SF

NOT AVAILABLE

PROPERTY AVAILABILITY PHOTOS

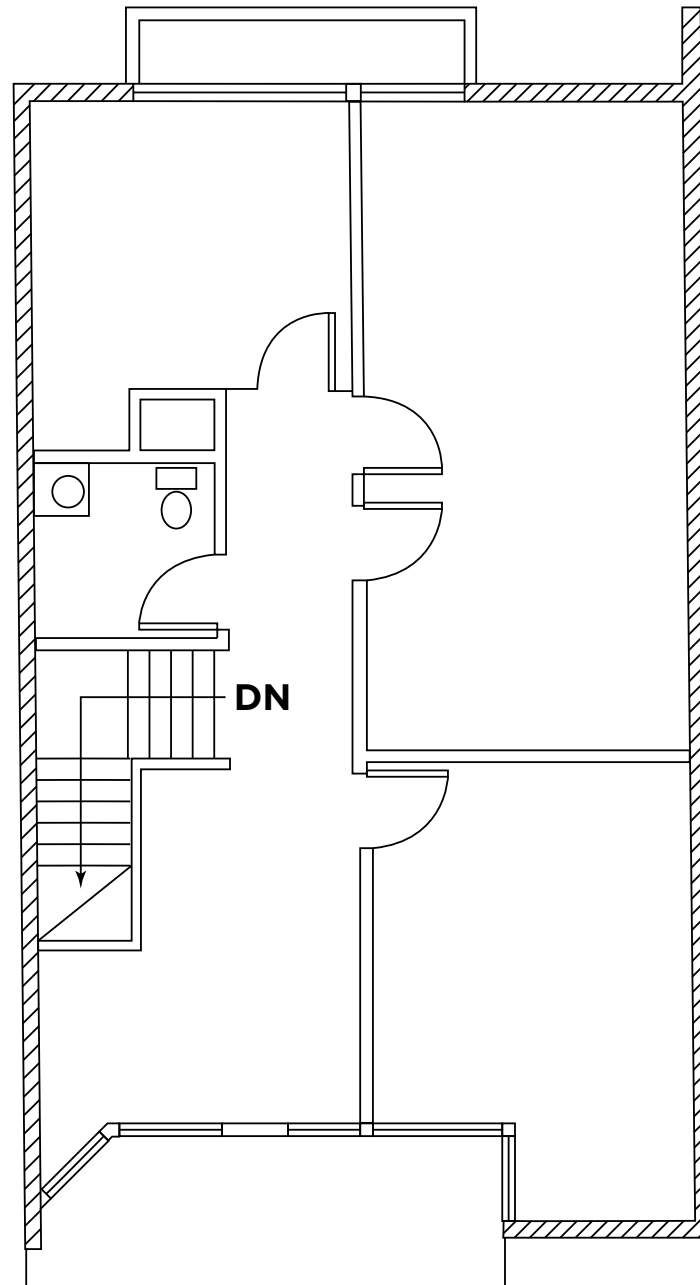
B210



FLOOR PLAN

B210

1,170 SF





FOR MORE INFORMATION, CONTACT:

JOHN FENNELL

Managing Director

+1 925 963 3698

john.fennell@cushwake.com

LIC #00902673

JOSH HERTZ

Associate

+1 925 621 3846

josh.hertz@cushwake.com

©2025 Cushman & Wakefield. All rights reserved. The information contained in this communication is strictly confidential. This information has been obtained from sources believed to be reliable but has not been verified. NO WARRANTY OR REPRESENTATION, EXPRESS OR IMPLIED, IS MADE AS TO THE CONDITION OF THE PROPERTY (OR PROPERTIES) REFERENCED HEREIN OR AS TO THE ACCURACY OR COMPLETENESS OF THE INFORMATION CONTAINED HEREIN, AND SAME IS SUBMITTED SUBJECT TO ERRORS, OMISSIONS, CHANGE OF PRICE, RENTAL OR OTHER CONDITIONS, WITHDRAWAL WITHOUT NOTICE, AND TO ANY SPECIAL LISTING CONDITIONS IMPOSED BY THE PROPERTY OWNER(S). ANY PROJECTIONS, OPINIONS OR ESTIMATES ARE SUBJECT TO UNCERTAINTY AND DO NOT SIGNIFY CURRENT OR FUTURE PROPERTY PERFORMANCE.

