

+/-1,000 - 16,200 SF FOR LEASE

# **GALAXY PLAZA**

30800 VAN DYKE  
WARREN, MI

**PRIME RETAIL  
TURN-KEY OFFICE SPACE**



**CUSHMAN &  
WAKEFIELD**







# About the SPACE

**Building Size: 44,000 SF**

**Site Area: 2.16 AC**

**Zoning: UN - Urban Neighborhood**

**Parking: 170 Spaces**

**Year built/ Renovated: 1986/2020**

**Tenancy: Multiple**

**Building Class: B**

**Lease Rate: Negotiable**





## PROPERTY HIGHLIGHTS

- Suites from 1,000 to 16,200 SF (plug & play options available)
- +/-4,300 SF ground floor space ideal for restaurant, medical, or financial services
- First floor drive thru/ pick up window available
- Turn-key office space and prime retail location
- Complete building renovation in 2020
- Monument and building signage available
- Modern finishes throughout



# Photos of the SPACE





# Photos of the SPACE





# Photos of the SPACE



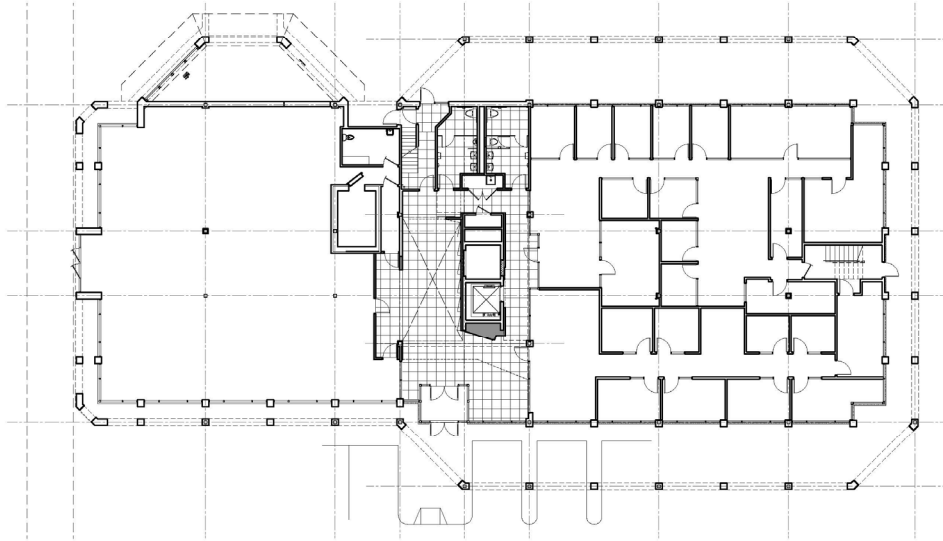


# Photos of the SPACE

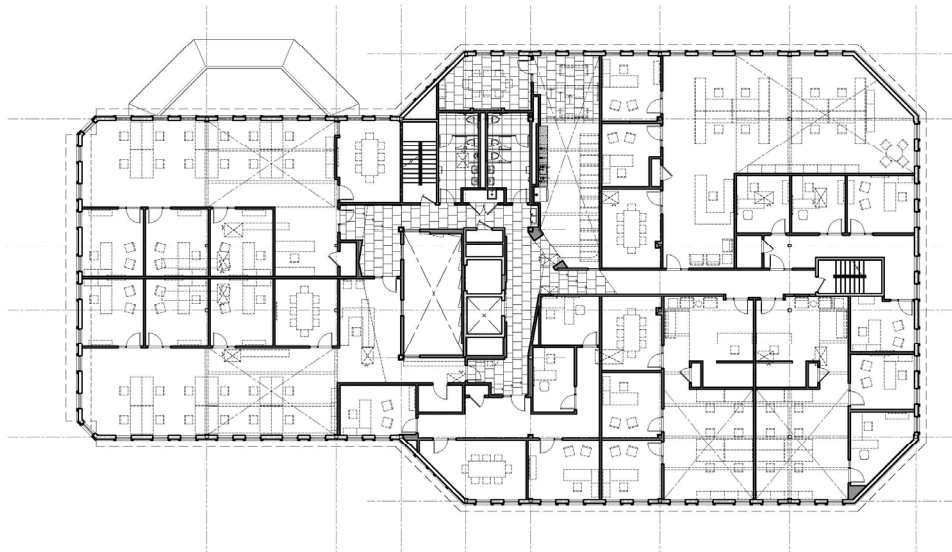




## Floorplans



**GROUND FLOOR 4,300 SF**  
**FANTASTIC VAN DYKE ROAD FRONTAGE**

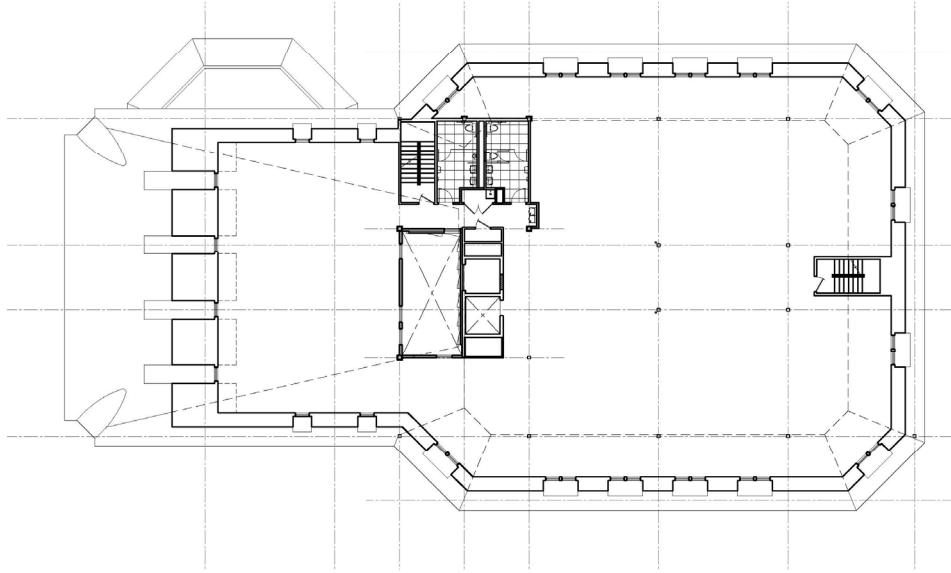


**SECOND FLOOR**

**SUITES RANGING 1,000 - 5,145 SF**

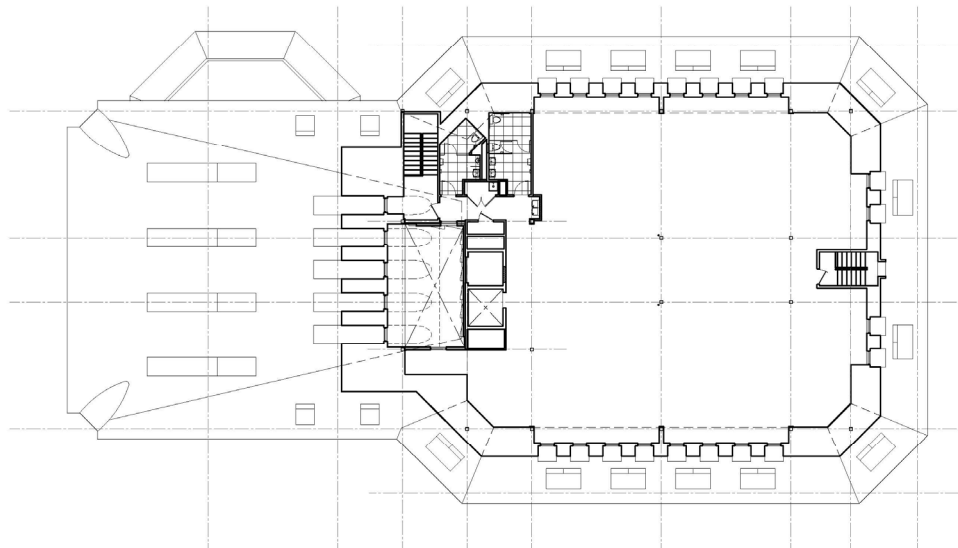


## Floorplans



### THIRD FLOOR

ENTIRE FLOOR AVAILABLE FOR LEASE



### FOURTH FLOOR

ENTIRE FLOOR AVAILABLE FOR LEASE



## Location



HARLOW CURTICE ROAD

VAN DYKE ROAD



LOUIS CHEVROLET ROAD



30800 VAN DYKE







**E 13 MILE ROAD**



**1 MILE:  
POPULATION 6,939**



**1 MILE:  
AVG. HOUSEHOLD  
INCOME \$72,561**



**1 MILE: AVG. HOUSE  
VALUE \$153,738**



**48,824 TRAFFIC COUNT  
ON VAN DYKE ROAD**



**18 MILES TO DETROIT**



**12 MILES TO TROY**



**7.7 MILES TO DETROIT  
CITY AIRPORT**





**CUSHMAN &  
WAKEFIELD**

## CONTACT

**ALBERT ELLIS**  
SENIOR ASSOCIATE  
+1 248 358 6111  
[albert.ellis@cushwake.com](mailto:albert.ellis@cushwake.com)

**JOHN VANNOORD**  
SENIOR ASSOCIATE  
+1 248 358 6106  
[john.vannoord@cushwake.com](mailto:john.vannoord@cushwake.com)

