



OFFICE FOR LEASE



LA MESA VILLAGE PLAZA

4700 Spring Street
La Mesa, CA 91942

PROPERTY HIGHLIGHTS

Located in the heart of Downtown La Mesa

Excellent freeway access to 8, 125 & 94

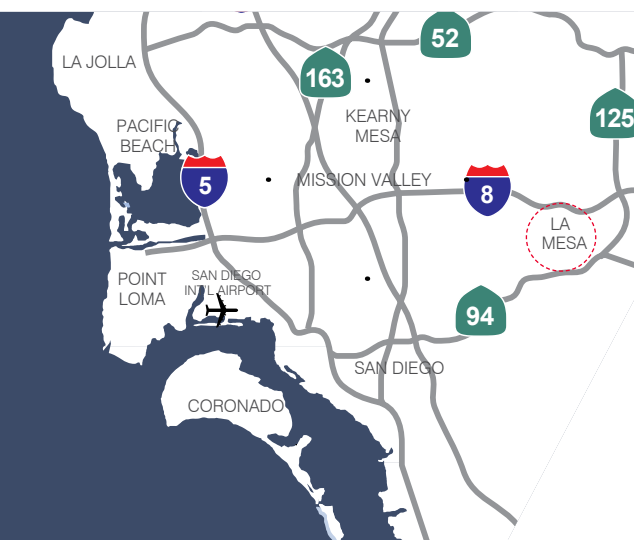
High visibility

On-site trolley station

On-site management and security

Adjacent and on-site retail amenities

Free surface and covered parking available



FOR MORE INFORMATION, PLEASE CONTACT:

DEREK HULSE

Executive Director
+1 858 334 4005
derek.hulse@cushwake.com
LIC #01740180

12830 El Camino Real, Suite 100
San Diego, CA 92130
Main +1 858 452 6500
Fax +1 858 452 3206
cushmanwakefield.com

©2023 Cushman & Wakefield. All rights reserved. The information contained in this communication is strictly confidential. This information has been obtained from sources believed to be reliable but has not been verified. No warranty or representation, express or implied, is made as to the condition of the property (or properties) referenced herein or as to the accuracy or completeness of the information contained herein, and same is submitted subject to errors, omissions, change of price, rental or other conditions, withdrawal without notice, and to any special listing conditions imposed by the property owner(s). Any projections, opinions or estimates are subject to uncertainty and do not signify current or future property performance.



LA MESA VILLAGE PLAZA

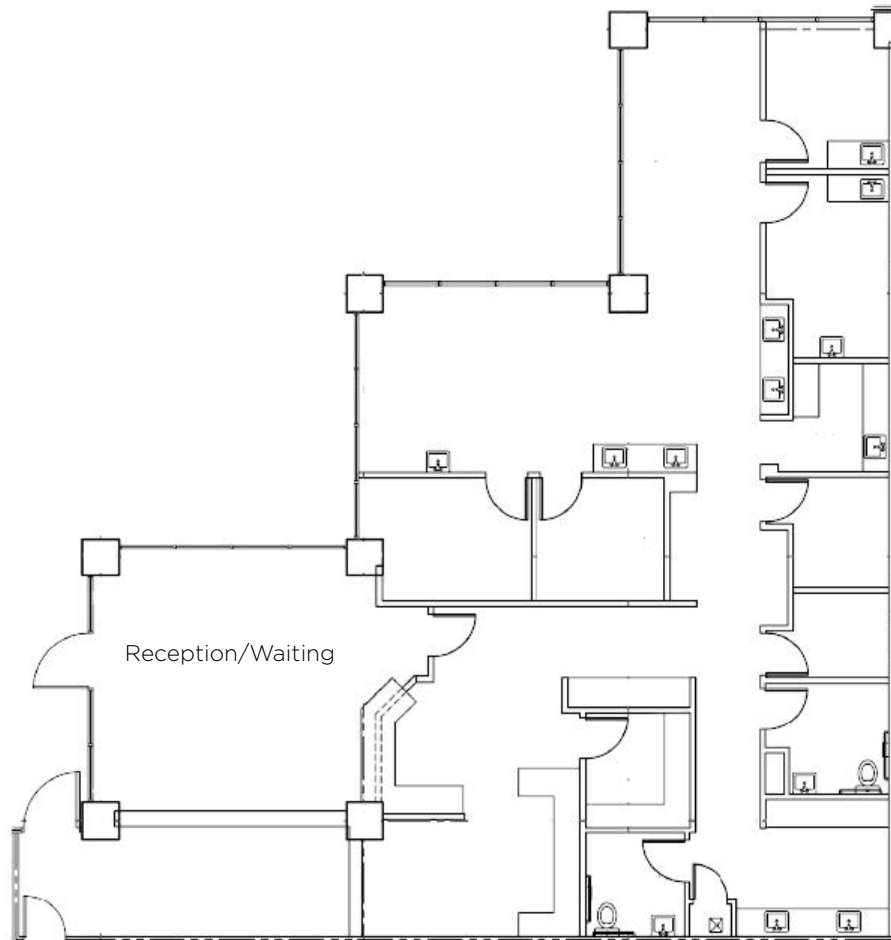
4700 Spring St. / La Mesa, CA 91942

SUITE 104 / 3,070 SF



FLOOR PLAN

Former Dentist Office



DEREK HULSE

Executive Director
+1 858 334 4005
derek.hulse@cushwake.com
LIC #01740180

12830 El Camino Real, Suite 100
San Diego, CA 92130
Main +1 858 452 6500
Fax +1 858 452 3206
cushmanwakefield.com

©2023 Cushman & Wakefield. All rights reserved. The information contained in this communication is strictly confidential. This information has been obtained from sources believed to be reliable but has not been verified. No warranty or representation, express or implied, is made as to the condition of the property (or properties) referenced herein or as to the accuracy or completeness of the information contained herein, and same is submitted subject to errors, omissions, change of price, rental or other conditions, withdrawal without notice, and to any special listing conditions imposed by the property owner(s). Any projections, opinions or estimates are subject to uncertainty and do not signify current or future property performance.



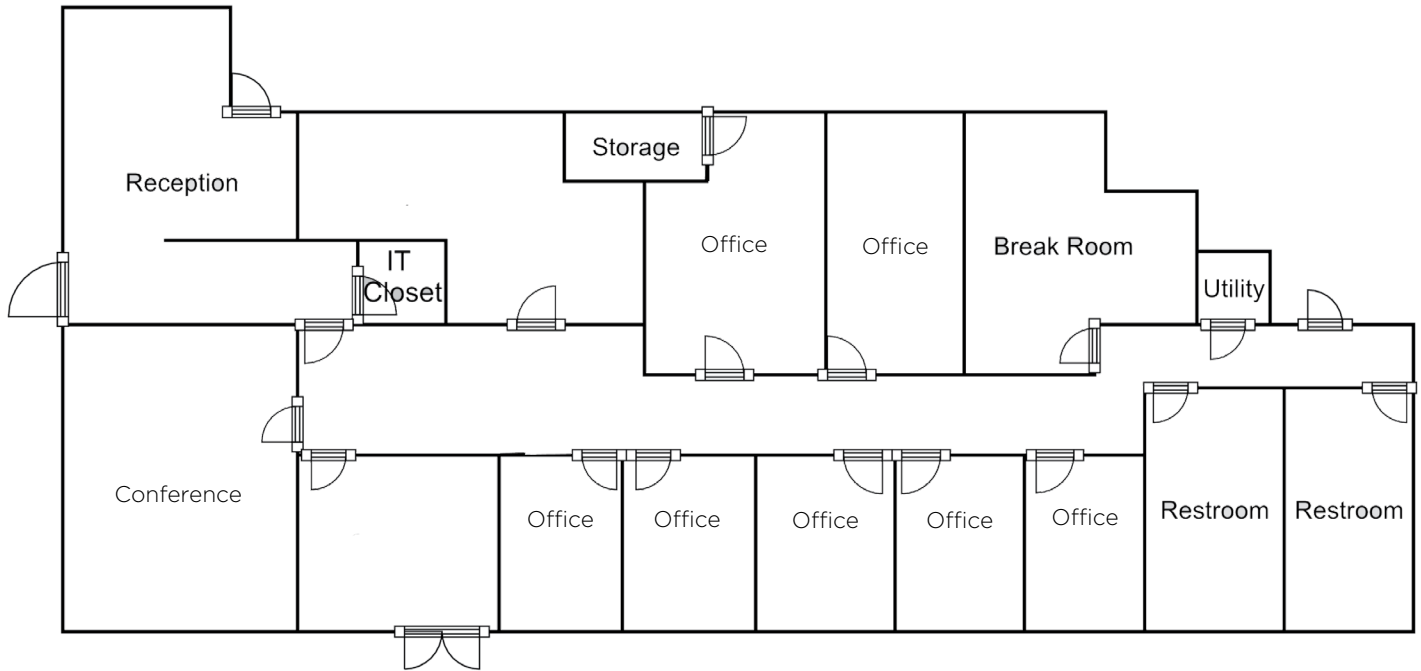
LA MESA VILLAGE PLAZA

4700 Spring St. / La Mesa, CA 91942

SUITE 180 / 3,513 SF



FLOOR PLAN



DEREK HULSE
Executive Director
+1 858 334 4005
derek.hulse@cushwake.com
LIC #01740180

12830 El Camino Real, Suite 100
San Diego, CA 92130
Main +1 858 452 6500
Fax +1 858 452 3206
cushmanwakefield.com

©2023 Cushman & Wakefield. All rights reserved. The information contained in this communication is strictly confidential. This information has been obtained from sources believed to be reliable but has not been verified. No warranty or representation, express or implied, is made as to the condition of the property (or properties) referenced herein or as to the accuracy or completeness of the information contained herein, and same is submitted subject to errors, omissions, change of price, rental or other conditions, withdrawal without notice, and to any special listing conditions imposed by the property owner(s). Any projections, opinions or estimates are subject to uncertainty and do not signify current or future property performance.

LA MESA VILLAGE PLAZA

4700 Spring St.
La Mesa, CA 91942

AMENITY MAP



Nearby Amenities

- | | | |
|----------------------------------|----------------------------------|-----------------------------------|
| 1 Starbucks | 11 Trolley Stop Deli | 21 City Tacos |
| 2 China Super Buffet | 12 Yogurt Mill La Mesa | 22 Pete's Place |
| 3 CA Coast Credit Union | 13 Pink Rose Cafe | 23 The Regal Bar |
| 4 Vons | 14 Will Power Fitness | 24 Konnichiwa Sushi & Bar |
| 5 Round Table Pizza | 15 Union Bank | 25 Aubrey Rose Tea Room |
| 6 Albert's Mexican Food | 16 Public Square Coffee | 26 Curbside Eatery |
| 7 Menchie's Frozen Yogurt | 17 Swami's Cafe | 27 Centifonti's Restaurant |
| 8 Farmer's Table | 18 La Mesa Wine & Spirits | 28 Coin Haus |
| 9 Light Bulb Coffee | 19 Por Favor | 29 Surf Rider Pizza Co. |
| 10 Subway | 20 Boss Bird Kitchen | 30 Johnny B's Burgers |

DEREK HULSE

Executive Director
+1 858 334 4005
derek.hulse@cushwake.com
LIC #01740180

12830 El Camino Real, Suite 100
San Diego, CA 92101
Main +1 858 452 6500
Fax +1 858 452 3206
cushmanwakefield.com